

# Lentivirus-mediated short-hairpin RNA targeting IGF-1R inhibits growth and lymphangiogenesis in breast cancer

YANING CHEN<sup>1</sup>, CHENFANG ZHU<sup>1</sup>, ZHIYOU PENG<sup>1</sup>, YALEI DAI<sup>2</sup> and YAN GU<sup>1</sup>

<sup>1</sup>Department of General Surgery, Shanghai Ninth People's Hospital, Shanghai Jiaotong University School of Medicine, HuangPu District, Shanghai 200011; <sup>2</sup>Department of Immunology, Shanghai Tongji University School of Medicine, YangPu District, Shanghai 200092, P.R. China

Received April 15, 2012; Accepted July 17, 2012

DOI: 10.3892/or.2012.1964

**Abstract.** In this study, we investigated the effects of lentivirus (LV)-mediated short hairpin RNA (shRNA) targeting IGF-1R on the growth and lymphangiogenesis of breast cancer. The LV vector effectively delivered the IGF-1R shRNA to MDA-MB-231 cells, leading to significant reduction of IGF-1R mRNA and protein expression. Infection of MDA-MB-231 cells with LV-IGF-1R shRNA reduced cell growth and migration. Transplantation of MDA-MB-231 cells with suppressed IGF-1R expression in SCID mice reduced tumor growth and lymphangiogenesis. These data collectively suggest that LV-mediated shRNA is an effective way to suppress IGF-1R expression and to inhibit growth and lymphangiogenesis of breast cancer. Specific inhibition of IGF-1R expression with shRNA represents a promising approach for the treatment of breast cancer.

## Introduction

Measured by incidence, mortality and economic costs, the global burden of breast cancer in women is substantial and on the increase (1). It is estimated that every year, more than one million women are diagnosed with breast cancer worldwide, and more than 410,000 will die from the disease, representing 14% of female cancer deaths (2-4). The mortality from breast cancer is mainly due to metastatic disease. While both tamoxifen and trastuzumab are very successful in treating some breast cancer patients, others do not benefit from these therapies, developing resistance to estrogen manipulation, and suffer from progressive metastatic disease (5). The lymphatic system constitutes one of the most important pathways of

tumor dissemination. Studies of tumor models in animals and clinicopathological data have indicated that growth of lymphatic vessels (lymphangiogenesis) in the vicinity of solid tumors may contribute to lymphatic metastasis. The most extensively studied signaling system that promotes lymphangiogenesis involves the secreted lymphangiogenic proteins vascular endothelial growth factor-C (VEGF-C) and VEGF-D, and their cognate receptor VEGF receptor-3 (VEGFR-3) (6).

Insulin-like growth factor-1 receptor (IGF-1R) is a glycosylated heterotetramer composed of 2 extracellular  $\alpha$  subunits and  $\beta$  subunits that have intrinsic tyrosine kinase activity with 70% homology to the insulin receptor (7). IGF-1R mainly mediates the effect of insulin-like growth factors (IGFs), which are potent mitogens that regulate cell proliferation, differentiation, and protection from apoptosis (8). IGF-1R expression level in primary breast cancer was observed upregulated in 43.8% of tumors detected by immunohistochemical analysis (9). Among node-negative patients, those with high levels of IGF-1R were found to have significantly reduced overall survival (10). The IGF-1R pathway plays an important role in mediating resistance to both general cytotoxic therapies, such as radiation and chemotherapy, and targeted therapies, such as tamoxifen and trastuzumab (11). Therefore, targeting the IGF pathway might be a novel approach to overcoming this resistance and improving clinical outcome of breast cancer.

RNA interference (RNAi), a novel strategy of gene silencing, has rapidly become a powerful tool for drug discovery and target validation in cell culture (12). The natural role of RNAi is thought to be a cellular defense against viral infection or potentially harmful destabilizing genomic intruders such as transposons. RNAi can also be induced in mammalian cells by the introduction of synthetic small interfering RNA (siRNA) 21-23 base pairs in length, or by plasmid and viral vector systems that express short hairpin RNAs (shRNA) that are subsequently processed to siRNA by the cellular machinery (13-15).

To investigate the potential value of targeting IGF-1R in breast cancer, we utilised the lentivirus-based shRNA expression plasmid pLL3.7 to knock down expression of endogenous IGF-1R. We show that lentivirus (LV)-mediated shRNA that targets IGF-1R can effectively inhibit the growth and migration of MDA-MB-231 breast cancer cells both *in vitro* and *in vivo*.

---

*Correspondence to:* Dr Yan Gu, Department of General Surgery, Shanghai Ninth People's Hospital, Shanghai Jiaotong University School of Medicine, Zhizaoju Road 639, HuangPu District, Shanghai 200011, P.R. China  
E-mail: yangu@sjtu.edu.cn

**Key words:** tumor growth, breast neoplasm, lymphatic metastasis, RNA interference, targeted therapy

## Materials and methods

**Cell culture.** The MDA-MB-231 breast cancer and the human embryonic kidney 293T cell lines were purchased from Nanjing KeyGen Biotech Co., Ltd. (Nanjing, China). MDA-MB-231 cells and 293T cells were cultured in RPMI-1640 (Gibco, Grand Island, NY, USA) and Dulbecco's modified Eagle's medium (DMEM; Gibco), respectively, and supplemented with 10% fetal bovine serum (FBS; Gibco). Cells were maintained in a humidified incubator with 5% CO<sub>2</sub> at 37°C.

**shRNA design and vector construction.** The shRNA expression cassette contained 21 nucleotide (nt) of the target sequence followed by the loop sequence (TTCAAGAGA), reverse complement to the 21 nt, stop codon for U6 promoter and *Xho*I site (sense strand: 5'-TGAGACCTGAAAGGAAGCGGAGATTCAAGAGATCTCCGCTTCCTTTTCAGGTCTCTTTTTC-3'; antisense strand: 5'-TCGAGAAAAAAGAGACCTGAAGGAAGCGGAGATCTCTTGAATCTCCGCTTCCTTTCAGGTCTCA-3'). The IGF-1R-shRNA contains the sense targeting sequence of AGACCTGAAAGGAAGCGGAGA corresponding to the 2250-2270 nucleotide positions of human IGF-1R coding sequence (GenBank accession NM\_000875.3). The shRNA cassettes and their complementary strands were synthesized by Shanghai Sangon Biotech Co., and annealed by heating to 95°C for 5 min followed by cooling to room temperature. The resulting double-strand oligo DNA was cloned into the lentivirus-based shRNA expression plasmid pLL3.7 (available from Shanghai Telebio Biomedical Co., Ltd., Shanghai, China), and inserted between *Hpa*I and *Xho*I sites (16). Plasmid pLL3.7 without any shRNA inserted was used as negative control. The resulting plasmid was confirmed by restriction enzyme digestion and DNA sequencing. Plasmid pLL3.7 is designed to contain an EGFP reporter gene controlled by the CMV promoter, enabling the monitoring of lentivirus infection through EGFP expression (17).

**Lentiviral vector production.** A four-plasmid transfection system (available from Shanghai Telebio Biomedical Co.) was used to produce high-titer lentiviral vectors. Briefly, the packaging plasmids and pLL3.7 were amplified in *Escherichia coli* and purified using AxyPrep Plasmid Maxiprep kit according to the manufacturer's instructions. The lentiviral vectors were then prepared by transfecting 293T cells with the plasmids pLL3.7, using calcium phosphate transfection method in the presence of the packaging plasmid pMD2G, pMDLg/pRRE and pRSVrev. The viral supernatant was collected at 48 h after transfection, concentrated, and passed through a 0.45 µm filter. Titers were determined by infecting HeLa cells with serial dilutions of concentrated lentivirus. For a typical preparation, the titre was ~1x10<sup>7</sup> infectious units (IU) per ml. The lentiviral stocks were stored in small aliquot at -70°C for future use.

**Cell infection.** MDA-MB-231 cells were seeded in 6-well plates (5x10<sup>5</sup>/well) and were cultured overnight. Lentiviruses (0.1 ml) were mixed with 1.5 ml complete medium and added to the cells for incubation for 24 h at 37°C. After 24-h infection, the medium was replaced with fresh 1640 medium. This procedure was repeated for 3 days. The efficiency of transduction was assessed and photomicrographs of EGFP expression

were recorded using a Nikon Eclipse TE2000U inverted microscope equipped with a charge-coupled device (CCD) camera.

**Real-time polymerase chain reaction (qPCR).** Total RNA was isolated using TRIzol reagent (ShineGene Molecular Biotech Co., Shanghai, China) according to the manufacturer's instructions. From total RNA, 1 µg was reverse-transcribed into cDNA with EnergicScript First Strand cDNA Synthesis kits (ShineGene Molecular Biotech Co.). Human β-actin RNA was used as an internal control. Primers for IGF-1R were: forward, 5'-ACAAGTTGAGGATCAGCGAGAATG-3'; reverse, 5'-GGACAGCGACGGGCAGAG-3'. Gene expression levels were evaluated by real-time quantitative PCR kinetics with ShineSybr Real-Time qPCR MasterMix kits (ShineGene Molecular Biotech Co.). Real-time PCR was performed with 2 µl of appropriate diluted cDNA, 1 µl (25 pmol/µl) of forward and reverse primers specific for human IGF-1R and β-actin, 25 µl of Hotstart fluo-PCR mix, and 21 µl of ddH<sub>2</sub>O. Real-time PCR was carried out using the iQ5 real-time PCR detection system (Bio-Rad Laboratories, Hercules, CA, USA) with the following program: pre-heating 94°C 4 min; then 40 cycles of 94°C 30 sec; 60°C 30 sec; and 72°C 30 sec. The expression of target RNA relative to β actin was calculated based on the threshold cycle (C<sub>t</sub>) as  $R = 2^{-\Delta(\Delta C_t)}$ , where  $\Delta C_t = C_{t\text{IGF-1R}} - C_{t\text{beta actin}}$ ;  $\Delta(\Delta C_t) = \Delta C_{t\text{sample}} - \Delta C_{t\text{control}}$ .

**Western blotting.** Cell lysates were prepared in RIPA buffer (Cell Signaling Technology, Beverly, MA, USA); their protein concentrations were determined using the BCA Protein Assay kit (KeyGen Biotech). For electrophoresis, 30 µg of total protein in 5X loading buffer was loaded to each well of a 10% (w/v) SDS-PAGE gel and transferred to polyvinylidene fluoride (PVDF) membranes. After electrotransferring, the blot was blocked and probed with primary antibody at 4°C followed by incubation with horseradish peroxidase (HRP)-conjugated secondary antibody. IGF-I receptor-β antibody (Cell Signaling Technology, Beverly, MA, USA) was used at 1/1000 dilution, while a mouse monoclonal antibody against human GAPDH (Abmart, Shanghai, China) at 1:5000 was used as control. Immunoblots were developed using BeyoECL Plus (Beyotime Institute of Biotechnology, Jiangsu Province, China) according to the manufacturer's instructions.

**Cell proliferation assay.** Cell proliferation was determined by WST-8 assay using Cell Counting Kit-8 (CCK-8; Beyotime Institute of Biotechnology). MDA-MB-231 cells infected or uninfected with LVs were trypsinized counted and seeded in a 96-well plate (3x10<sup>4</sup>/ml) for overnight incubation. Then cells were inoculated with 10 µl CCK-8 solution at 37°C in a humid atmosphere containing 5% CO<sub>2</sub> for 2 h, and absorbance at 450 nm of the supernatant was measured spectrophotometrically. This assay was carried out at various time points (at 24, 48 and 72 h after seeding). A total of three independent experiments were performed, and the means were used to depict the growth curve.

**Migration assay.** A Transwell system (Corning, NY, USA) was used to evaluate cell migration. The upper and lower chambers were separated by a polycarbonate membrane with pores of



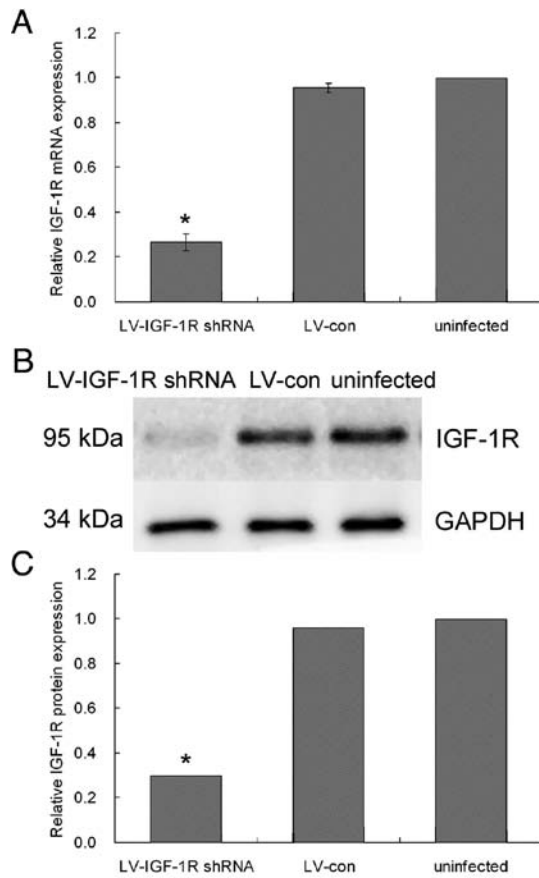


Figure 2. Suppression of IGF-1R expression in MDA-MB-231 cells by LV-IGF-1R shRNA. (A) IGF-1R mRNA expression was measured by real-time PCR using total RNA isolated from the cells. (B) Western blot analysis of IGF-1R protein expression using total protein extracted from the cells. (C) Quantification of three independent experiments from (B). \* $P < 0.01$ .

cells in the presence of IGF-1 and subjected them to two more rounds of lentiviral transduction with concentrated vector on 3 consecutive days. The transfection rate was calculated by the percentage of fluorescent cells in the total cells and was almost 100% in each visual field (Fig. 1). When the transduced cells were maintained *in vitro* for 30 days in the presence of growth factors, >90% of the cells continued to express EGFP.

**Effect of LV-IGF-1R shRNA on IGF-1R expression.** To evaluate silencing efficiency, infected cells were characterized for IGF-1R mRNA by quantitative reverse transcription-PCR (qRT-PCR) using specific primers against endogenous IGF-1R; and for protein expression in immunoblots obtained using the rabbit polyclonal antibody against IGF-1R. As shown in Fig. 1B, qRT-PCR results indicate that endogenous IGF-1R mRNA expression was significantly inhibited at 24 h after infection in MDA-MB-231 cells. Compared with the control group, the IGF-1R shRNA group showed lower quantities of IGF-1R mRNA; mRNA expression was decreased by nearly 70% (Fig. 2A). In accordance with this, western blot analysis showed that IGF-1R protein expression was significantly suppressed in the IGF-1R shRNA group compared with the control LV group in MDA-MB-231 cells ( $P < 0.01$ ) (Fig. 2B). IGF-1R expression was unaltered in cells infected by vectors lacking the shRNA cassette.

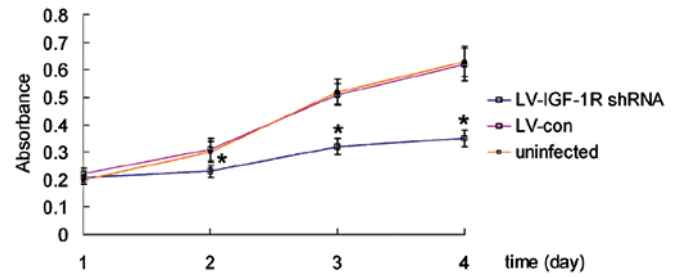


Figure 3. CCK-8 assay of MDA-MB-231 cells infected with different LVs. LV-IGF-1R shRNA significantly inhibited breast cancer cell growth *in vitro*. \* $P < 0.01$ .

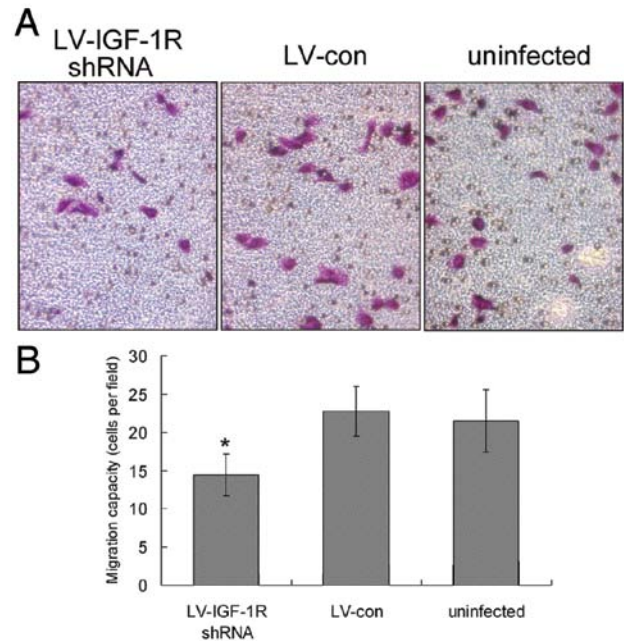


Figure 4. Migration capability examination of infected MDA-MB-231 cells by Transwell migration assay. (A) Cells stained purple by crystal violet were counted under light microscopy at  $\times 200$  magnification. LV-IGF-1R shRNA significantly inhibited breast cancer cell migration *in vitro*. (B) Quantification of three independent experiments from (A). \* $P < 0.01$ .

**LV-IGF-1R shRNA inhibits breast cancer cell growth *in vitro*.** To detect effects of suppression of IGF-1R expression on cell proliferation, we carried out a CCK-8 assay using equal number of cells infected with LV-IGF-1R shRNA or LV-con. Results indicate that transfection with LV-IGF-1R shRNA inhibited MDA-MB-231 cell proliferation by 37.3 and 43.5% compared with the control group at 48 and 72 h, respectively ( $P < 0.01$ ) (Fig. 3).

**LV-IGF-1R shRNA inhibits breast cancer cell migration *in vitro*.** We next assessed effects of IGF-1R silencing on cell motility using Transwell migration assays. Transfection of MDA-MB-231 cells with anti-IGF-1R shRNA inhibited cell migration through the polycarbonate membrane by 36.3%, whereas the control shRNA had no effect (Fig. 4).

**Transfection of LV-IGF-1R shRNA inhibits MDA-MB-231 cell growth *in vivo*.** To investigate the effects of IGF-1R



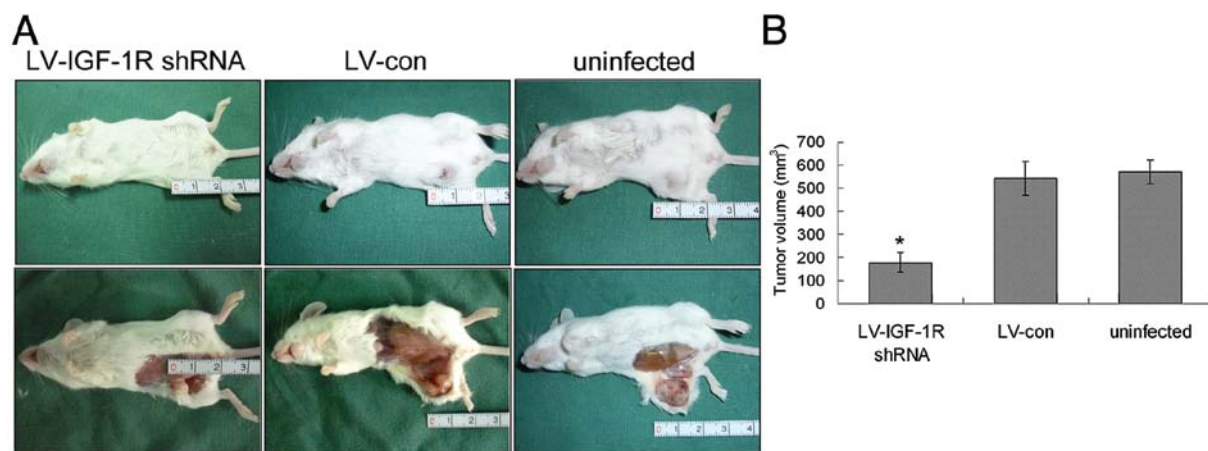


Figure 5. Effects of LV-IGF-1R shRNA on the growth of MDA-MB-231 cells xenografted into mice. (A) The SCID mice were sacrificed 2 months after transplantation and the tumors were measured. Compared with the LV-con group and the uninfected group, tumor growth in SCID mice of the LV-IGF-1R shRNA group was significantly inhibited. (B) Quantification of tumor volume in each group from (A). \* $P < 0.01$ .

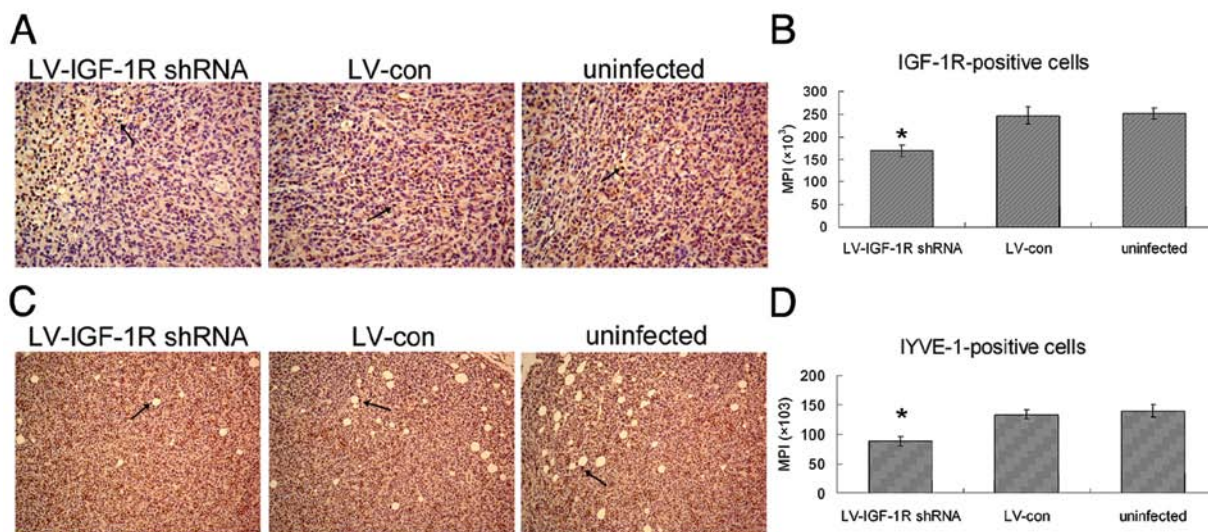


Figure 6. Suppression of IGF-1R expression and tumor lymphangiogenesis by lentivirus-mediated IGF-1R shRNA. (A) Photomicrographs of representative 5- $\mu$ m-thick formalin-fixed sections immunostained with IGF-1R obtained at x200 magnification from LV-IGF-1R shRNA group and control tumors. Arrow marks dark brown spots that are positively stained for IGF-1R. (B) Quantitation of IGF-1R<sup>+</sup> cells in immunostained sections derived from IGF-1R-shRNA group and control tumors. IGF-1R expression is inhibited by 31.5% in LV-IGF-1R shRNA group. (C) Photomicrographs of representative sections immunostained with LYVE-1 obtained at x200 magnification. The arrow marks LYVE-1<sup>+</sup> cells. (D) Quantitation of LYVE-1<sup>+</sup> cells in immunostained sections of each group. The tumor lymphangiogenesis of LV-IGF-1R shRNA group was inhibited by 34.2%. MPI, mean positive indices. \* $P < 0.01$ .

silencing on cell growth *in vivo*, we injected SCID mice with infected MDA-MB-231 cells as described above. There was no evidence of weight loss or physical distress resulting from the treatment protocol. As shown in Fig. 5, the tumor growth of LV-IGF-1R shRNA group was significantly inhibited (66.8% decrease).

**Effect of LV-IGF-1R shRNA on tumor lymphangiogenesis.** The immunohistochemical analysis for IGF-1R showed the expression level of IGF-1R in xenograft was significantly decreased in LV-IGF-1R shRNA group, compared with the LV-con group (Fig. 6A). The effect of LV-IGF-1R shRNA on lymphangiogenesis was determined by immunohistochemical analysis using LYVE-1 antibody. The semi-quantitative data from the IMS cell image analysis is shown in Fig. 6D. The

tumor lymphangiogenesis of LV-IGF-1R shRNA group was inhibited by 34.2%, compared with control tumors.

## Discussion

We have demonstrated in this study that shRNA delivered by a lentivirus was able to effectively suppress targeted IGF-1R expression in breast cancer MDA-MB-231 cells leading to significant suppression of cell growth and migration both *in vitro* and *in vivo*. These results encourage further exploration of RNAi as a potential method for breast cancer treatment.

Although knocked-down IGF-1R expression in some other cancer cells has been reported by a few groups using siRNA (18-20), here we showed a stable silencing of IGF-1R in MDA-MB-231 cells with LV-mediated shRNA. Other

approaches to abrogating IGF-1R signalling include dominant negative mutants, kinase defective mutants, anti-sense oligonucleotides, soluble receptors, antibodies against IGF-I and IGF-II, IGF-1R blocking antibodies and, more recently, a family of IGF-1R kinase inhibitors (21), but the stability and delivery efficacy of these antibodies or inhibitors seems to be a crucial limiting factor in exerting an inhibitory effect on the targeted molecule *in vivo*. Current data support the notion that in mammalian cells, due to the obvious amplification effect of RNAi, it is superior to antisense approaches for downregulation of gene expression though antisense has been widely used (22). Our study has indicated that the suppressive effect of LV-mediated shRNA to IGF-1R can reach about 70%.

The role of IGF-1R in regulating tumor growth is well understood (23). Several studies have shown that IGF-1R plays an important role at critical steps of the metastatic cascade, including cell adhesion, migration, invasion, angiogenesis, and cell growth at distant organ sites (24). It has been demonstrated that IGF-1R regulates metastasis of colon cancer as colon cancer cells expressing dominant negative IGF-1R failed to form liver metastases following splenic injection or direct injection into the livers of nude mice (25). Expression of antisense IGF-1R mRNA inhibited Ewing's sarcoma (ES) cell motility, and their ability to form colonies in soft agar *in vitro*; the metastatic ability of ES cells carrying antisense IGF-1R was significantly reduced *in vivo* (26). Metastatic uveal melanomas express higher levels of IGF-1Rs than primary tumors (27), and are sensitive to IGF-1R targeting (28). These data suggest IGF-1R is critical to metastasis of several types of cancer cells. Our study has also demonstrated that LV-mediated shRNA targeting IGF-1R significantly decreased breast cancer cell MDA-MB-231 proliferation and migration both *in vitro* and *in vivo*, indicating an important role of IGF-1R in breast cancer growth and metastasis.

Besides facilitating migration, there are two other ways in which IGF-1R can influence the spread of breast cancer to distant sites. The first is by stimulating angiogenesis and the second is by promoting lymphangiogenesis. Although angiogenesis is important for the dissemination of many solid tumors, the major way in which breast cancer cells metastasize is through the lymphatics (29). Therefore, the processes governing lymphangiogenesis may be of central importance to this disease (30). Lymphangiogenesis is another important mechanism by which tumor cells are disseminated via the lymphatic system. VEGF-C has been identified as mediators of this process (31). Lewis lung carcinoma subline M-27 cells transfected with human IGF-1R cDNA expressed VEGF-C and acquired a lymph node metastasizing potential *in vivo*, implicating the role of IGF-1R in the control of lymphatic metastasis (32). Our previous study also showed that increased VEGF-C expression was closely related to lymphangiogenesis in breast cancer invasion and lymphatic metastasis (33). Since IGF-1R is widely distributed in mammalian tissues, including blood and lymphatic vessels (34), intratumoral injections or tail vein injections of lentiviral vectors targeting cancer cells may interfere with vessel formation. In our study, breast cancer cells were infected with lentivirus vectors *in vitro*, and then transplanted into SCID mice. The results show that downregulation of IGF-1R inhibits lymphangiogenesis and tumor metastasis *in vivo*. In another previous study, we reported IGF-1

significantly increased VEGF-C expression in MDA-MB-231 breast cancer cells *in vitro* (35). Whether IGF-1R suppression would interfere with VEGF-C secretion is in need of further experimental demonstration. IGF-1R could be an important therapeutic target to suppress breast cancer metastasis, but a package of comprehensive and complementary research is required.

Taken together, it can be concluded that RNAi is a powerful genetic tool to reduce target gene expression. Our results also indicate that LV-mediated shRNA targeting IGF-1R offers a potent therapeutic strategy to inhibit lymphatic metastasis of breast cancer.

## Acknowledgements

This study was supported by the National Natural Science Foundation of China, Grant Number 30872521.

## References

1. Mackay J, Jemal A, Lee NC and Parkin DM: The Cancer Atlas. American Cancer Society, Atlanta, GA, 2006.
2. Anderson BO, Yip CH, Ramsey SD, Bengoa R, Braun S, Fitch M, Groot M, Sancho-Garnier H and Tsu VD: Breast cancer in limited-resource countries: health care systems and public policy. *Breast J* 12: S54-S69, 2006.
3. Parkin DM, Bray F, Ferlay J and Pisani P: Global cancer statistics, 2002. *CA Cancer J Clin* 55: 74-108, 2005.
4. Parkin DM and Fernández LM: Use of statistics to assess the global burden of breast cancer. *Breast J* 12: S70-S80, 2006.
5. Sachdev D: Regulation of breast cancer metastasis by IGF signaling. *J Mammary Gland Biol Neoplasia* 13: 431-441, 2008.
6. Achen MG and Stacker SA: Tumor lymphangiogenesis and metastatic spread - new players begin to emerge. *Int J Cancer* 119: 1755-1760, 2006.
7. Ward CW, Garrett TP, McKern NM, Lou M, Cosgrove LJ, Sparrow LG, Frenkel MJ, Hoyne PA, Elleman TC, Adams TE, *et al*: The three dimensional structure of the type I insulin-like growth factor receptor. *Mol Pathol* 54: 125-132, 2001.
8. Baserga R, Peruzzi F and Reiss K: The IGF-1 receptor in cancer biology. *Int J Cancer* 107: 873-877, 2003.
9. Shimizu C, Hasegawa T, Tani Y, Takahashi F, Takeuchi M, Watanabe T, Ando M, Katsumata N and Fujiwara Y: Expression of insulin-like growth factor I receptor in primary breast cancer: immunohistochemical analysis. *Hum Pathol* 35: 1537-1542, 2004.
10. Taunk NK, Goyal S, Moran MS, Yang Q, Parikh R and Haffty BG: Prognostic significance of IGF-1R expression in patients treated with breast-conserving surgery and radiation therapy. *Radiother Oncol* 96: 204-208, 2010.
11. Casa AJ, Dearth RK, Litzemberger BC, Lee AV and Cui X: The type I insulin-like growth factor receptor pathway: a key player in cancer therapeutic resistance. *Front Biosci* 13: 3273-3287, 2008.
12. Takeshita F and Ochiya T: Therapeutic potential of RNA interference against cancer. *Cancer Sci* 97: 689-696, 2006.
13. Brummelkamp TR, Bernards R and Agami R: A system for stable expression of short interfering RNAs in mammalian cells. *Science* 296: 550-553, 2002.
14. Brummelkamp TR, Bernards R and Agami R: Stable suppression of tumorigenicity by virus-mediated RNA interference. *Cancer Cell* 2: 243-247, 2002.
15. Elbashir SM, Harborth J, Lendeckel W, Yalcin A, Weber K and Tuschl T: Duplexes of 21-nucleotide RNAs mediate RNA interference in cultured mammalian cells. *Nature* 411: 494-498, 2001.
16. Robinson DA, Dillon CP, Kwiatkowski AV, Sievers C, Yang L, Kopinja J, Rooney DL, Zhang M, Ihrig MM, McManus MT, *et al*: A lentivirus-based system to functionally silence genes in primary mammalian cells, stem cells and transgenic mice by RNA interference. *Nat Genet* 33: 401-406, 2003.
17. Addgene, Inc.: <http://www.addgene.org/11795/>. Accessed March 15, 2012.

18. Fang J, Zhou Q, Shi XL and Jiang BH: Luteolin inhibits insulin-like growth factor 1 receptor signaling in prostate cancer cells. *Carcinogenesis* 28: 713-723, 2007.
19. Patel BB, Gupta D, Elliott AA, Sengupta V, Yu Y and Majumdar AP: Curcumin targets FOLFOX-surviving colon cancer cells via inhibition of EGFRs and IGF-1R. *Anticancer Res* 30: 319-325, 2010.
20. Santen RJ, Fan P, Zhang Z, Bao Y, Song RX and Yue W: Estrogen signals via an extra-nuclear pathway involving IGF-1R and EGFR in tamoxifen-sensitive and -resistant breast cancer cells. *Steroids* 74: 586-594, 2009.
21. Werner H and Bruchim I: The insulin-like growth factor-I receptor as an oncogene. *Arch Physiol Biochem* 115: 58-71, 2009.
22. Nagy P, Arndt-Jovin DJ and Jovin TM: Small interfering RNAs suppress the expression of endogenous and GFP-fused epidermal growth factor receptor (erbB1) and induce apoptosis in erbB1-overexpressing cells. *Exp Cell Res* 285: 39-49, 2003.
23. Lann D and LeRoith D: The role of endocrine insulin-like growth factor-I and insulin in breast cancer. *J Mammary Gland Biol Neoplasia* 13: 371-379, 2008.
24. Samani AA, Yakar S, LeRoith D and Brodt P: The role of the IGF system in cancer growth and metastasis: overview and recent insights. *Endocr Rev* 28: 20-47, 2007.
25. Reinmuth N, Fan F, Liu W, Parikh AA, Stoeltzing O, Jung YD, Bucana CD, Radinsky R, Gallick GE and Ellis LM: Impact of insulin-like growth factor receptor-I function on angiogenesis, growth, and metastasis of colon cancer. *Lab Invest* 82: 1377-1389, 2002.
26. Scotlandi K, Maini C, Manara MC, Benini S, Serra M, Cerisano V, Strammiello R, Baldini N, Lollini PL, Nanni P, *et al*: Effectiveness of insulin-like growth factor I receptor antisense strategy against Ewing's sarcoma cells. *Cancer Gene Ther* 9: 296-307, 2002.
27. Mallikarjuna K, Pushparaj V, Biswas J and Krishnakumar S: Expression of insulin-like growth factor receptor (IGF-1R), c-Fos, and c-Jun in uveal melanoma: an immunohistochemical study. *Curr Eye Res* 31: 875-883, 2006.
28. Girnita A, All-Ericsson C, Economou MA, Aström K, Axelson M, Seregard S, Larsson O and Girnita L: The insulin-like growth factor-I receptor inhibitor picropodophyllin causes tumor regression and attenuates mechanisms involved in invasion of uveal melanoma cells. *Clin Cancer Res* 12: 1383-1391, 2006.
29. Cunnick GH, Jiang WG, Gomez KF and Mansel RE: Lymphangiogenesis and breast cancer metastasis. *Histol Histopathol* 17: 863-870, 2002.
30. Kucab JE and Dunn SE: Role of IGF-1R in mediating breast cancer invasion and metastasis. *Breast Dis* 17: 41-47, 2003.
31. Achen MG, McColl BK and Stacker SA: Focus on lymphangiogenesis in tumor metastasis. *Cancer Cell* 7: 121-127, 2005.
32. Tang Y, Zhang D, Fallavollita L and Brodt P: Vascular endothelial growth factor C expression and lymph node metastasis are regulated by the type I insulin-like growth factor receptor. *Cancer Res* 63: 1166-1171, 2003.
33. Gu Y, Qi X and Guo S: Lymphangiogenesis induced by VEGF-C and VEGF-D promotes metastasis and a poor outcome in breast carcinoma: a retrospective study of 61 cases. *Clin Exp Metastasis* 25: 717-725, 2008.
34. Björndahl M, Cao R, Nissen LJ, Clasper S, Johnson LA, Xue Y, Zhou Z, Jackson D, Hansen AJ and Cao Y: Insulin-like growth factors 1 and 2 induce lymphangiogenesis in vivo. *Proc Natl Acad Sci USA* 102: 15593-15598, 2005.
35. Zhu C, Qi X, Chen Y, Sun B, Dai Y and Gu Y: PI3K/Akt and MAPK/ERK1/2 signaling pathways are involved in IGF-1-induced VEGF-C upregulation in breast cancer. *J Cancer Res Clin Oncol* 137: 1587-1594, 2011.