

Figure S1. EvaGreen ddPCR absolute quantification (copies/ $\mu$ l) of  $\beta$ -actin into two blinded swabs obtained from individuals tested for COVID-19 infection. ddPCR, droplet digital polymerase chain reaction.

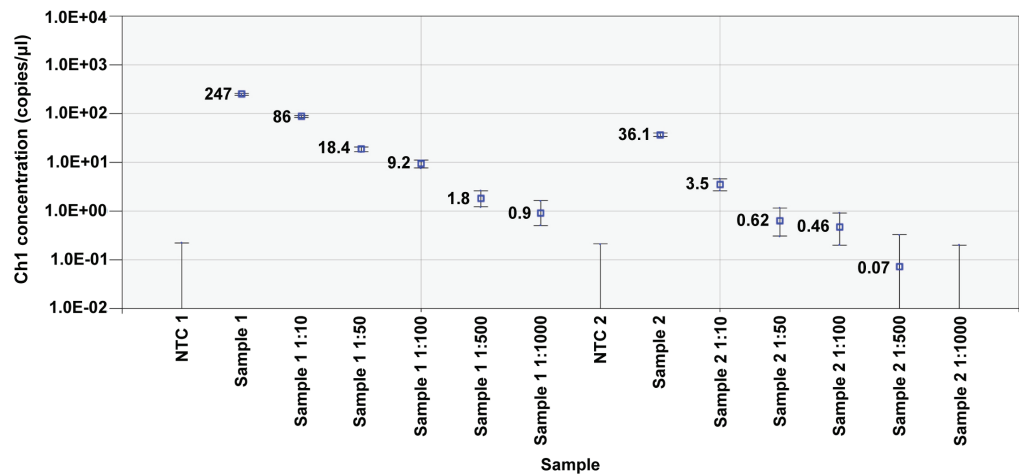


Figure S2. Sequence of the amplified fragment. (A) Peaks obtained through Sanger sequencing; (B) alignment between the amplified fragment and SARS-CoV-2 reference sequence MT077125.

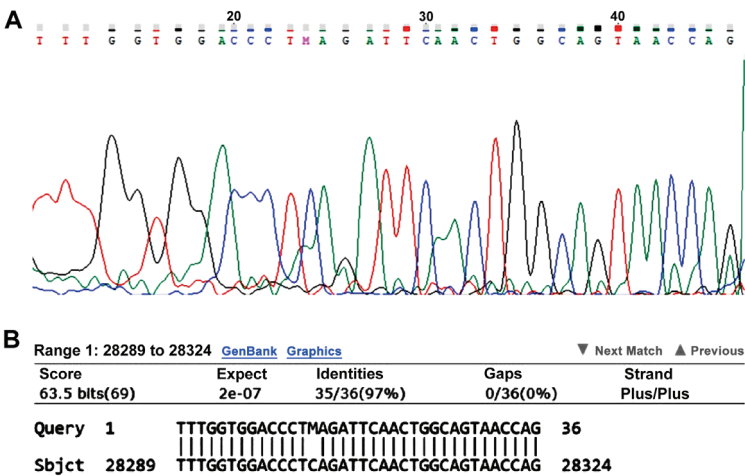


Table SI. Ct values and the RNA concentration (ng *per* reaction) used for  $\beta$ -actin detection.

ID Sample	Ct	Ct average	[RNA]
Sample 1	29.12	27.77	1.87 ng
	26.56		
	27.65		
Sample 1 1:10	25.77	25.78	0.187 ng
	25.79		
	25.78		
Sample 1 1:20	28.12	28.00	0.093 ng
	27.89		
	27.98		
Sample 1 1:50	30.33	30.33	0.037 ng
	30.32		
	30.33		
Sample 1 1:100	35.15	33.30	0.018 ng
	31.54		
	33.22		
Sample 2	31.45	30.43	1.87 ng
	28.92		
	30.92		
Sample 2 1:10	29.97	29.89	0.187 ng
	29.83		
	29.86		
Sample 2 1:20	32.88	33.06	0.093 ng
	33.26		
	33.04		
Sample 2 1:50	35.09	35.02	0.037 ng
	34.95		
	35.03		
Sample 2 1:100	35.93	36.56	0.018 ng
	37.34		
	36.41		
NTC $\beta$ -actin	-	-	
	-		
	-		

[RNA], concentration of RNA *per* reaction.