

Figure S1. Transfection efficiencies of siPHF6s. Transfection efficiency of siPHF6-1, siPHF6-2 and siPHF6-3 in HeLa cells were analyzed using western blotting. NC is the non-specific siRNA. Data are expressed as the mean \pm SD of three independent experiments. * P <0.05, ** P <0.01 vs. NC group. si/siRNA, small interfering RNA; NC, negative control.

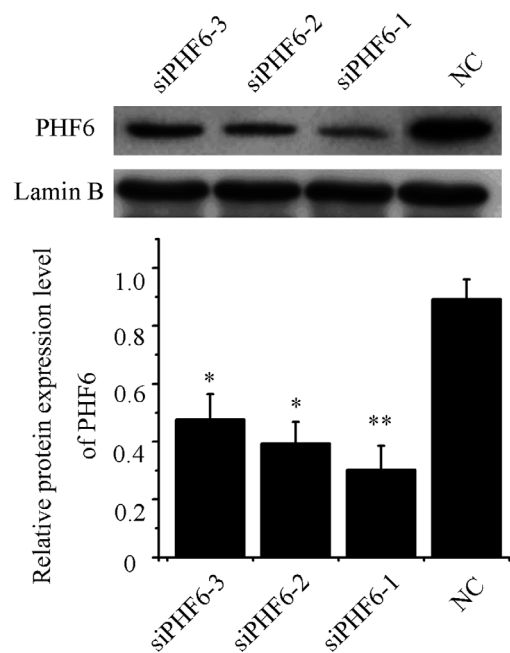


Figure S2. Transfection efficiencies of pEGFP-C1-PHF6 and siPHF6. Transfection efficiencies of siPHF6 and pEGFP-C1-PHF6 in HeLa cells were analyzed using western blotting. Control represents the empty vector plasmid, pEGFP-C1, and NC is the non-specific siRNA. Data are expressed as the mean \pm SD of three independent experiments. * $P < 0.05$ vs. NC group. PHF6, plant homeodomain finger protein 6; NC, negative control; si/siRNA, small interfering RNA.

