

Figure S1. Immunohistochemical staining of RNF31 in lung cancer cases without *RNF31* Q622H polymorphism. Lung cancer specimen with (A) negative and (B) positive expression of RNF31. Scale bar=100 μ m. RNF31, RING finger protein 31.

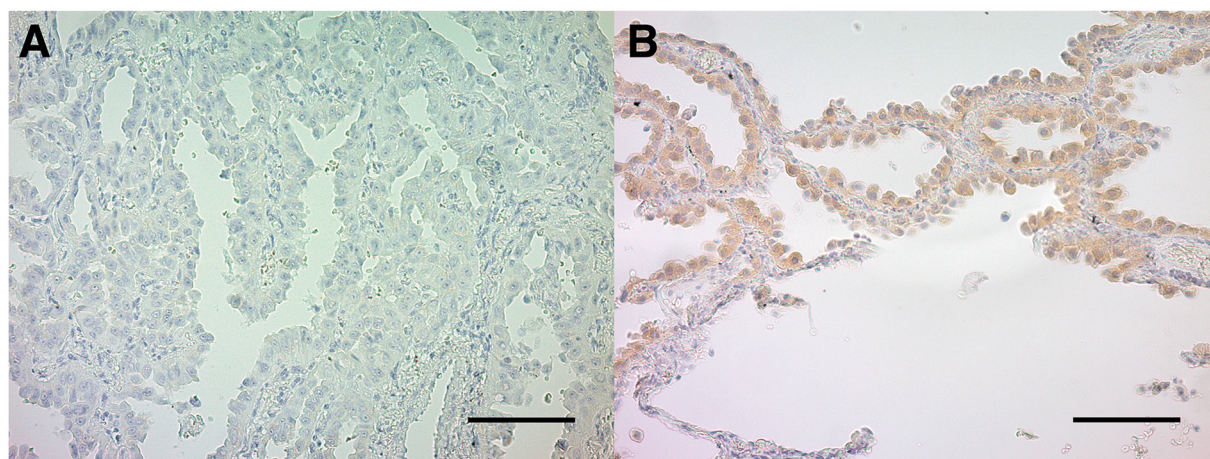


Figure S2. Immunoblot analysis of *RNF31*-KO 293T cells. Immunoblot analysis showed RNF31 protein deficiency in *RNF31*-KO 293T cells. RNF31, RING finger protein 31; KO, knockout.

