

Figure S1. Flow chart representation of the systematic literature review performed according to PRISMA guidelines.

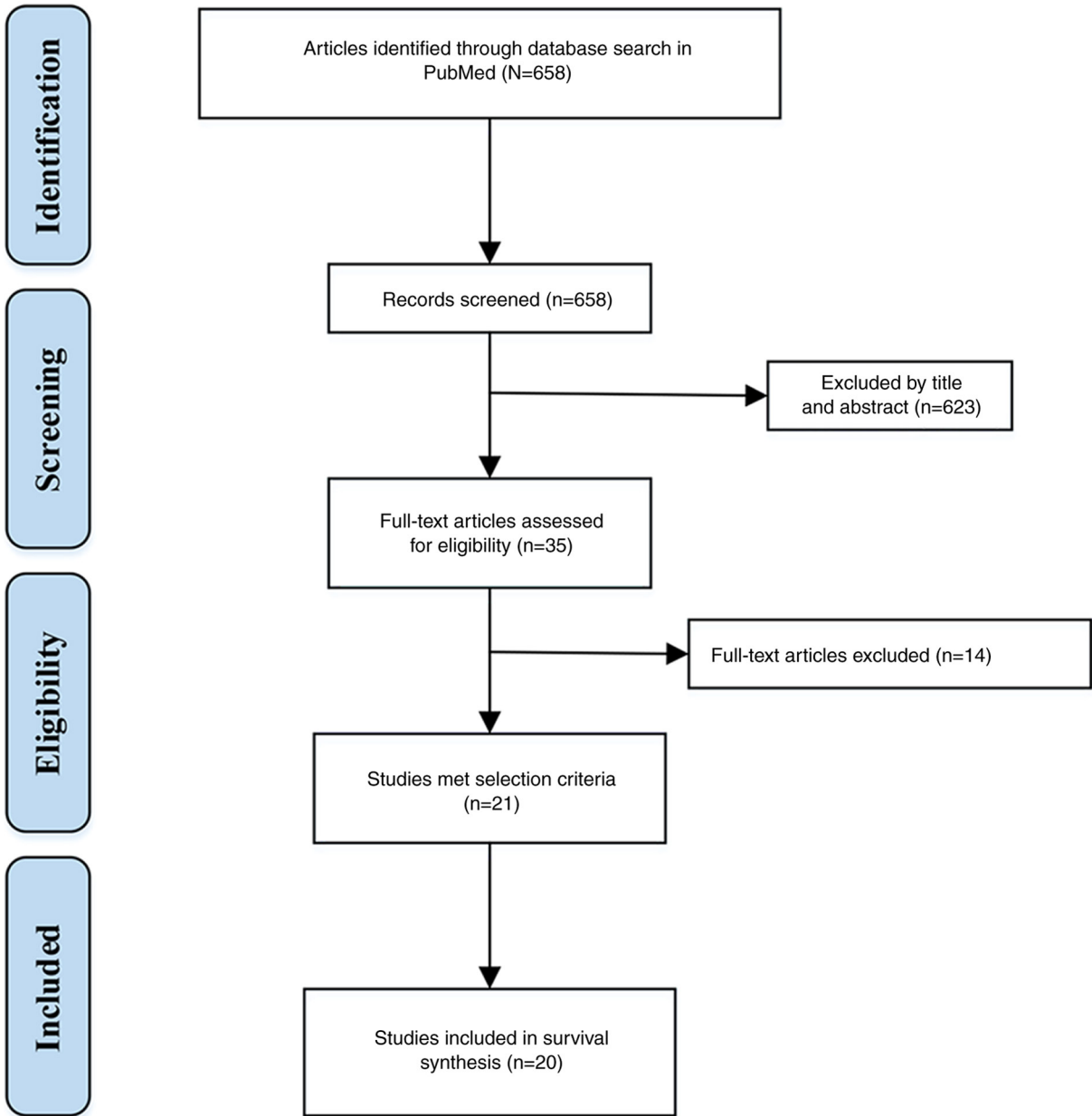


Figure S2. Kaplan-Meier curves for OS based on (A) IDH1 status, alongside representative immunohistochemical imaging of (B) IDH1+ and (C) IDH1-. Kaplan-Meier curves for OS based on (D) Ki-67 level, alongside representative immunohistochemical imaging of (E) Ki-67 20% and (F) Ki-67 80%. IDH, isocitrate dehydrogenase 1. OS, overall survival.

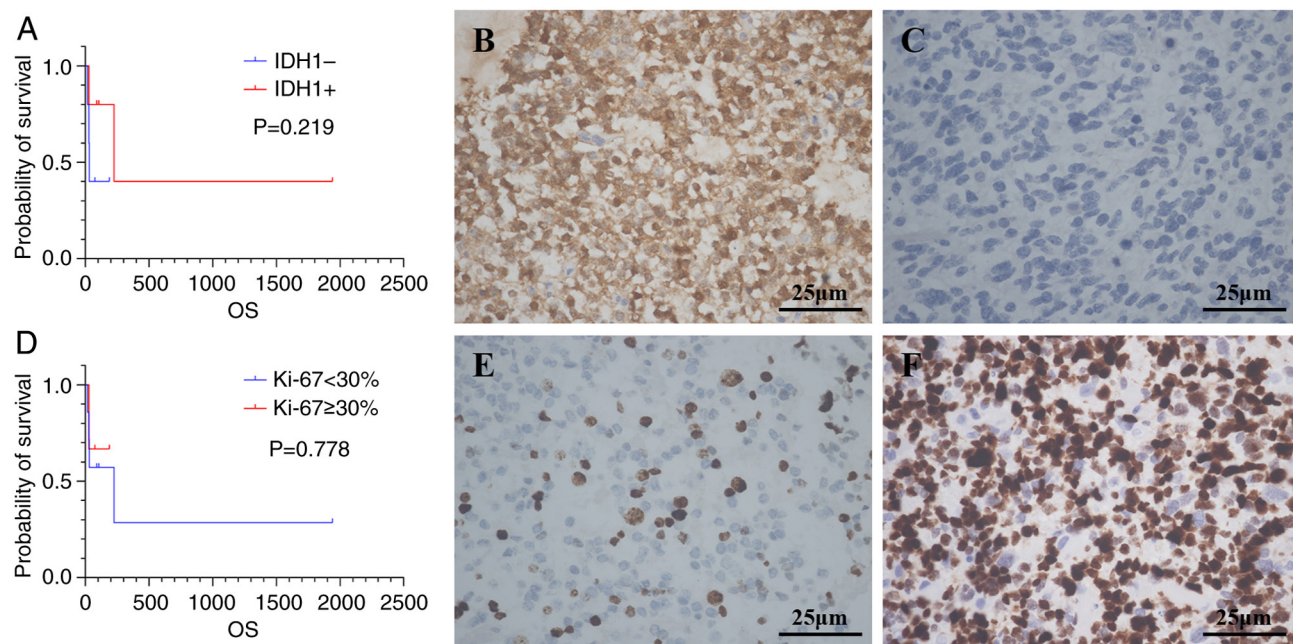


Figure S3. Comparison of CD31<sup>+</sup>, CD68<sup>+</sup> and CD163<sup>+</sup> cell counts between gliomas from HIV-positive and -negative patients. Gliomas from HIV-positive patients had a lower count of CD163<sup>+</sup> cells, but no difference in CD31<sup>+</sup> and CD68<sup>+</sup> counts. \*P<0.05. HIV, human immunodeficiency virus; HPF, high-power field at a magnification of x400; ns, not significant.

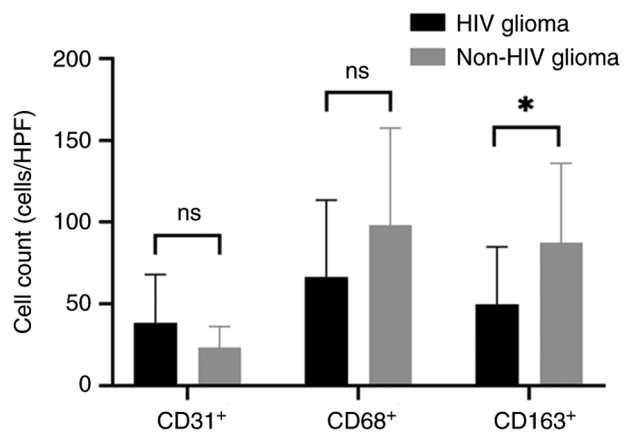


Figure S4. Immunohistochemical imaging of CD31, CD68 and CD163 in gliomas from HIV-positive and -negative patients (magnification, x400). HIV, human immunodeficiency virus.

