

Promoter and histone methylation and p16^{INK4A} gene expression in colon cancer

EBRU ESIN YORUKER¹, UFUK MERT¹, DURSUN BUGRA², SUMER YAMANER² and NEJAT DALAY¹

¹Department of Basic Oncology, Oncology Institute and ²Department of Surgery, Istanbul Faculty of Medicine, Istanbul University, 34093 Capa, Istanbul, Turkey

Received May 3, 2012; Accepted August 6, 2012

DOI: 10.3892/etm.2012.683

Abstract. The inactivation of the cyclin-dependent kinase inhibitor p16^{INK4A} gene by hypermethylation is observed in numerous types of cancer. New findings indicate that DNA and histone methylation act in concert in gene silencing. In this study, we investigated the methylation status of the p16^{INK4A} gene promoter and the histone 3 lysine 9 residue in the tumors and matched normal tissue samples from patients with colorectal cancer and analyzed their association with gene expression. The methylation and expression of the p16^{INK4A} gene were analyzed by real-time PCR, and histone methylation was analyzed by chromatin immunoprecipitation followed by real-time PCR. p16^{INK4A} expression was significantly higher in the tumors compared to normal tissue. Mono-, di- and trimethylation levels of the H3K9 residue were similar in the tumor and normal tissue samples. We did not observe any significant correlation between p16^{INK4A} methylation or expression and clinical parameters. Our results suggest that epigenetic modifications of the p16^{INK4A} gene and histone lysine methylation do not play a major role in colon carcinogenesis.

Introduction

Genetic and epigenetic alterations underlie the pathogenesis of cancer. The disruption of epigenetic mechanisms leads to abnormal development and is involved in malignant transformation (1). Epigenetic changes include DNA methylation and histone modifications, which may affect gene expression by changing chromatin structure or modifying the DNA without altering the native nucleotide sequence. Since epigenetic changes are potentially reversible, they make attractive targets for therapeutic intervention (2).

Cytosine methylation usually only occurs in the CG dinucleotides which are unevenly distributed in the genome.

The vast majority are located in the repetitive elements and heterochromatin. CpG islands in the promoter have a frequency of approximately five times greater than the rest of the genome (3). The CpG islands of transcriptionally active genes in normal cells are unmethylated. Methylation of this region leads to the modification of chromatin and transcriptional silencing of the gene.

Chromatin structure plays an integral role in the control of gene expression. The basic repeating unit of chromatin is the nucleosome which functions as a DNA packaging unit and transcriptional regulator (4). The amino terminal tails of the histones protrude out of the nucleosome and are subject to a variety of chemical modifications, including phosphorylation, acetylation, ubiquitination and methylation. These modifications affect the access of regulatory factors and complexes to chromatin and influence gene expression. Various sites of lysine methylation on the histones play essential roles in regulating chromatin structure and gene transcription. Methylation at lysine on histone H3 has recently been shown to be a marker of heterochromatin in all organisms (5). The methylation of H3K4, H3R17 and H4R3 has also been associated with the activation of transcription. By contrast, methylation of H3K9 has been correlated with gene silencing (6-9). H3K9 methylation is recognized by heterochromatin-associated proteins and is required to maintain the heterochromatic state. Degrees of methylation are differentially regulated and exert various functional outcomes. Studies have shown that modifications of histone H3 also contribute to gene silencing by switching between acetylation and methylation of the lysine 9 residue (10).

Epigenetic mechanisms play an important role in colon cancer and aberrant methylation of the p16^{INK4A} gene is commonly observed (11,12). The p16^{INK4A} gene [also known as cyclin-dependent kinase inhibitor 2A (*CDKN2A*)] is a member of the INK4A/ARF family of suppressors of cyclin-dependent kinases (CDKs) which plays an important role in the G1-S transition by binding to CDK4 and CDK6 and inhibiting the progression of the cell cycle (13,14). Inactivation of the p16^{INK4A} gene is considered to be the second most common defect in human cancer (15,16). The p16^{INK4A} gene is inactivated by homozygous deletions, point mutations and preferentially by methylation of the gene promoter (17,18). p16^{INK4A} promoter methylation and subsequent gene silencing have been reported in various cancer types (19-23). The differences between the methylation states of the histone H3 lysine 9 have been asso-

Correspondence to: Professor Nejat Dalay, Department of Basic Oncology, Oncology Institute, Istanbul University, 34093 Capa, Istanbul, Turkey
E-mail: ndalay@yahoo.com

Key words: colon cancer, epigenetics, gene expression

ciated with repression (24) and activation (25) of important genes. In this study we aimed to investigate the expression of the p16^{INK4A} gene and the methylation status of the promoter region and the histone H3 lysine 9 residue. To our knowledge this is the first study in the literature to analyze these parameters in matched tumor samples.

Materials and methods

In this study tumor specimens from 71 patients with colorectal cancer (mean age, 61.04±14.8) and matched normal tissue samples were analyzed. The characteristics of the patients are summarized in Table I. The study was approved by the Istanbul Faculty of Medicine Ethics Committee (2006-504).

Sodium bisulfite modification of DNA. Genomic DNA was extracted from the tissue samples. The quality of DNA was evaluated spectrophotometrically at 260/280 nm. The bisulfite conversion was performed according to the manufacturer's instructions using the Methylamp™ DNA Modification kit (Epigentek, Brooklyn, NY, USA). During this process all unmethylated cytosines are deaminated, sulfonated and converted to uracil, while 5-methylcytosines remain unaltered. The bisulfite-modified DNA was stored at -20°C until use. DNA from placenta treated with SssI methyltransferase (New England Biolabs, Ipswich, MA, USA) was used as a standard for the methylated reaction.

Methylation-specific PCR. To increase the sensitivity of methylation detection, we used a 2-step methylation-specific PCR approach, in which the outside primer pairs selectively amplify bisulfite-modified DNA, irrespective of the methylation status. A second reaction then uses specially designed nested primer pairs to discriminate between the methylated and unmethylated alleles. The sequences of the outside primers were: forward; 5'-GGAGGAAGAAAGAGGAGGGGT-3' and reverse; 5'-CTACCTAATTCCAATTCCCCT-3' (Integrated DNA Technologies, Coralville, IA, USA). Amplification was performed on a thermal cycler (Techne, Inc., Burlington, NJ, USA) as follows: denaturation for 5 min at 94°C and 35 cycles of denaturation at 94°C for 30 sec, annealing at 64°C for 30 sec and extension at 72°C for 30 sec. PCR reactions were carried out in a total volume of 25 µl containing 1X reaction buffer, 2 mM MgCl₂, 200 µM deoxynucleotide triphosphate, 400 pmol of each primer, 1.5 unit Taq polymerase (Fermentas, Vilnius, Lithuania) and 3 µl modified DNA.

The second round PCR reaction (quantitative step) was performed using real-time PCR (LightCycler®; Roche, Mannheim, Germany). The PCR mix contained 1 µl of PCR product from the first step, 1X hybridization probes, 2 mM MgCl₂, 0.5 µM of each primer and 0.2 µM of each probe in a total volume of 15 µl. Following denaturation at 95°C for 10 min, amplification was performed by 45 cycles of denaturation at 94°C for 10 sec, annealing at 50°C for 10 sec and extension at 72°C for 10 sec. Standard curves were constructed using serial dilutions of methylated placental DNA. The sequences of the primers were: forward; 5'-TAGAGGGTGGGGCGGATCGCG-3' and reverse; 5'-CCAAAATCGCCCGCCATCCC-3'. The fragment of the p16^{INK4A} gene amplified by the second primer pair covers 12 CpG dinucleotides. The sequences of probes

Table I. Clinical characteristics of the patients.

Characteristics	No. of patients	%
Stage (n=46)		
I	3	6.5
II	5	10.8
III	16	34.7
IV	19	41.3
Tumor location (n=71)		
Colon	31	43.6
Rectum	30	42.2
Rectosigmoid	10	14
Lymph node status (n=46)		
Negative	11	23.9
Positive	35	76.08
Distant metastasis (n=46)		
Negative	27	58.6
Positive	19	41.3
Differentiation (n=36)		
High	5	13.8
Middle	28	77.7
Low	3	8.3

were 5'-CCGCCGCCGCTACCTACTCT-FL, 5'-LC640-CCCTCTCCGCAACCGCCGAAC-PH. The two probes were designed to hybridize to the same strand between two unlabeled primers. Fluorescence monitoring of amplification is based on the concept that a signal is generated when fluorescence resonance energy transfer occurs between two adjacent fluorescently-labeled sequence-specific hybridization probes. The emitted fluorescence is measured and is proportional to the quantity of specific target sequences in the reaction mixture. The methylation levels were calculated by comparing the data from the samples with the standards using the LightCycler Relative Quantification Software (Roche).

Chromatin immunoprecipitation (ChIP). For the ChIP assay the method available on the UC Davis Genome Center web site (26) was used with certain modifications. Briefly, tissue samples were treated with 1% formaldehyde for 15 min to cross-link histones to DNA. After washing, the pellets were resuspended in the lysis buffer [5 mM PIPES (pH 8.0), 85 mM KCl, 0.5% NP-40, protease inhibitors (aprotinin, leupeptin, PMSF)] and nuclei lysis buffer [50 mM Tris-Cl (pH 8.1), 10 mM EDTA, 1% SDS, protease inhibitors], respectively. Each sample was sonicated 7 times for 8 sec each. The lysate was then divided into 3 fractions; which were incubated overnight at 4°C with 2 µg of the appropriate antibodies for H3K9 mono-, di- and trimethylation (Millipore, Billerica, MA, USA), respectively. The pellets were washed with dialysis buffer [2 mM EDTA, 50 mM Tris-Cl (pH 8.0)] and IP wash buffer [100 mM Tris-Cl (pH 9.0), 500 mM LiCl, 1% NP-40, 1% deoxycholic acid] and were resuspended in the elution buffer (50 mM NaHCO₃, 1% SDS). DNA was extracted using the phenol-chloroform method, ethanol precipitated

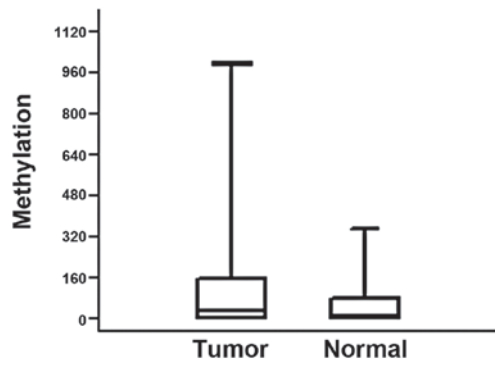


Figure 1. Methylation of the p16^{INK4A} gene promoter in the tumor and normal tissue samples shown in fluorescence units. The boxes indicate the upper and lower quartiles.

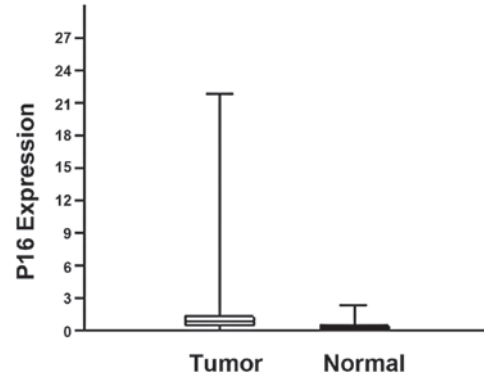


Figure 2. Expression of the p16^{INK4} gene in the tumors and normal tissue. The vertical axis indicates the normalized fluorescence signal. The boxes indicate the upper and lower quartiles.

and resuspended in 20 μ l of water. The PCR amplification of DNA was performed using the LightCycler 1.2 (Roche) and the double-stranded DNA binding dye SYBR-Green I as the fluorescent molecule. The PCR mix contained 1.2 μ l of SYBR Green mix, 2 mM MgCl₂, 0.5 μ M each primer and 4 μ l DNA in a total volume of 12 μ l. Amplification was performed by denaturation at 95°C for 10 min followed by 45 cycles of denaturation at 94°C for 10 sec, annealing at 60°C for 10 sec and extension at 72°C for 10 sec. The sequences of the primers were: forward; 5'-AGACAGCCGTTTTACACGCAG-3' and reverse; 5'-CACCGAGAAATCGAAATCACC-3'. Known concentrations of serial diluted DNA were used for the standard curve. To increase the specificity of SYBR Green I detection, we performed a melting curve analysis of the amplification reaction. The area below each of the peaks representing the relative amount of nucleic acids was calculated using the LightCycler Data Analysis Software (Roche).

Analysis of p16^{INK4A} gene expression. RNA samples were available from tumors of 41 patients. p16^{INK4A} mRNA levels were measured by real-time quantitative RT-PCR using the LightCycler 480 instrument (Roche Applied Science, Indianapolis, IN, USA) and UPL probes.

Total RNA was extracted from the tumor and normal tissue samples using the SV Total RNA Isolation system (Promega Corporation, Madison, WI, USA) as per the manufacturer's instructions. RNA from each sample was used to generate cDNA using the RevertAid First Strand cDNA Synthesis kit (Fermentas). Briefly, 1 μ g RNA and 1 μ l of oligo(dT) were used as starting materials, heated and kept at 70°C for 5 min. The samples were then chilled on ice, the other components (5X reaction buffer, ribonuclease inhibitor and dNTP mix) were added and the samples were incubated at 37°C for 5 min. Then 1 μ l reverse transcriptase (200 U/ μ l) was added and the samples were incubated at 42°C for 60 min. The reaction was inactivated at 70°C for 10 min.

The probes were designed using the Lightcycler Probe Design Software 2.0 (Roche). The HPRT gene was used as the internal control. The PCR mix of 20 μ l was prepared by adding to 5 μ l cDNA template, 2.5 μ M of each of the forward and reverse primers (final concentration) and 10 μ l of the probe master mix. The sequences of the forward and

reverse primers were: 5'-GTGGACCTGGCTGAGGAG-3' and 5'-CTTTCAATCGGGGATGTCTG-3'. The PCR conditions were: one cycle at 95°C for 10 min, 45 cycles of denaturation at 95°C for 10 sec, annealing at 60°C for 30 sec and elongation at 72°C for 1 sec with subsequent cooling at 40°C for 30 sec. The results were analyzed by basic relative quantification.

The tumor and normal samples were compared using the Mann-Whitney U test; associations with clinical parameters were evaluated using the Kruskal-Wallis test and Spearman's rank correlation.

Results

Tissue samples were collected from 71 patients with colorectal cancer who underwent surgery for tumor resection. Methylation of the p16^{INK4A} gene promoter was analyzed by quantitative real-time PCR in the tumors and matched normal tissue samples from the patients. Methylation at the p16^{INK4A} promoter was higher in the tumors from 38 patients (53.5%) when compared with the normal tissue of the same individuals (Fig. 1). The median methylation levels were 24 for tumor tissue and 3.5 for normal tissue. However, due to the wide range of the values the difference was not significant (P=0.06). We also did not identify any significant correlation between the methylation levels and clinical parameters, including lymph node status, metastasis, stage and tumor location.

The expression of the p16^{INK4A} gene was investigated in 41 samples by real-time PCR. p16^{INK4A} expression was higher in the tumors than normal tissue in 31 patients (75.6%). The median expression levels were 0.869 and 0.312 for the tumor and normal tissue samples, respectively. The difference was significant (P=0.0005; Fig. 2). No association was observed between the methylation status and expression of the p16^{INK4A} gene both for the tumor (P=0.315) and normal tissue (P=0.209) samples.

To determine the correlation between p16^{INK4A} methylation and chromatin remodelling, mono-, di- and trimethylation of the H3K9 residue was analyzed by chromatin immunoprecipitation and real-time PCR. The values of H3K9 mono-, di- and trimethylation for the normal and tumor tissues were similar (Table II). The median values of monomethylation for the tumor and normal tissue samples were 0.112 and 0.08, respec-

Table II. H3K9 methylation frequencies and median values in the tumors and normal samples.

Sample	Monomethylation		Dimethylation		Trimethylation	
	%	Median	%	Median	%	Median
Tumor	56.3	0.112	63.3	0.187	61.9	0.257
Normal	53.5	0.08	61.9	0.325	57.7	0.234

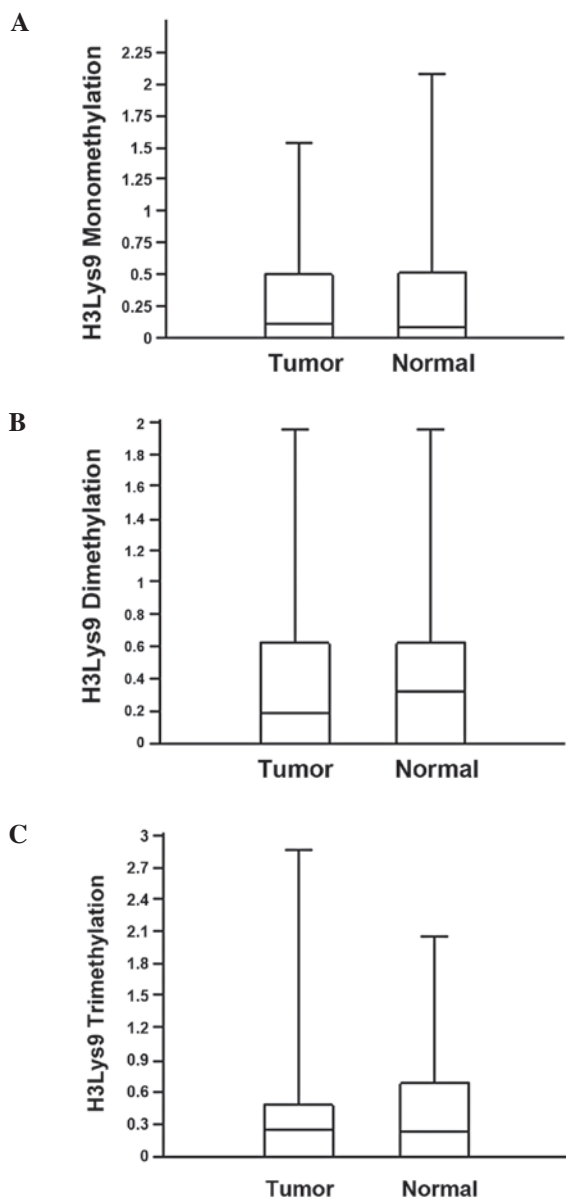


Figure 3. H3Lys9 methylation in the tumors and normal tissue. (A) Monomethylation, (B) dimethylation and (C) trimethylation. The vertical axis shows the area under the curve which represents of the amount of specific methylation.

tively (Fig. 3A). Median values for di- and trimethylation in the tumors and normal tissue were 0.187 vs. 0.325 and 0.257 vs. 0.234, respectively (Fig. 3B and C). The difference between the methylation levels of H3K9 in the normal and tumor tissues was not significant (Mann-Whitney U test, $P > 0.05$). The expression level of the p16^{INK4A} gene was not associated with

mono-, di- or trimethylation for the tumor ($P=0.404$, $P=0.457$ and $P=0.465$, respectively) or normal ($P=0.288$, $P=0.62$ and $P=0.667$, respectively) samples.

Discussion

Epigenetic mechanisms involving DNA methylation and histone modifications are closely associated but the critical initiating events in silencing remain undefined. Malignant cells are characterized by a localized increase in methylation in CpG island-associated promoters (27,28). Several lines of evidence indicate that alterations in histone modifications are crucial in cancer development and progression (29). In certain organisms all DNA methylation is dependent on H3K9 methylation (30). However, it remains unclear whether DNA methylation actually directs H3K9 methylation or whether it acts independently to silence gene expression in the absence of H3K9 methylation.

Methylation of the p16^{INK4A} gene as an epigenetic event has been reported in several tumor types (19-23,31). In this study methylation levels of the p16^{INK4A} gene promoter and of the histone H3K9 were analyzed in colorectal tumors and normal colon samples. To date, this is the first study to investigate DNA and histone methylation in a series of matched human tumors and normal tissue samples.

Expression of the p16^{INK4A} gene was significantly higher in tumor samples. This finding is consistent with the observation that promoter methylation levels were not different between the tumor and normal samples since methylation may also be detected in normal colon cells (32). The frequency of the hypermethylated tumors was 53% in this study. This value is in agreement with recent reports (33-36) but there are also studies reporting lower values in the literature (32,37,38). These differences may be explained by the high sensitivity of the methods used in our study. The use of primers and probes designed for the methylated sequences and application of nested PCR increases the specificity of the method markedly and makes it possible to detect low levels of methylated sequences (39). We also observed methylation in 45.3% of the normal tissue samples. A number of recent reports have confirmed that methylation is also observed in normal tissue (32,40,41). It has been suggested that methylation in normal tissue may be associated with increasing age (40,42). Suppression of p16^{INK4A} expression by methylation may be much lower or even absent in aging colon tissue (43) since increased p16^{INK4A} expression which accompanies promoter methylation has been reported in aging cells (44,45). This phenomenon is thought to play a role in the aging process by promoting senescence and the decline in gene function (46).

The epigenetic reprogramming of cancer cells occurs early in oncogenesis and is difficult to study in clinical samples. The correlation between DNA methylation and histone lysine methylation during the development of colon cancer remains unclear. There are numerous studies reporting findings in various fields. One of the first studies suggested a direct association between DNA methylation and histone lysine methylation in a cell line (47). In plants DNA methylation is sufficient for gene silencing (48). In prostate cancer cells, the effect of H3K27 trimethylation on gene silencing is independent of DNA methylation (49). It has also been demonstrated that silencing of p16^{INK4A} and H3K9 methylation precede DNA methylation (50). Histone H3K9 trimethylation is essential for the cells to survive radiation damage. Impairment of lysine 9 methylation may increase cancer risk by altering the efficiency of DNA repair (51). When we compared H3K9 methylation levels in the tumor and normal tissue samples no significant difference was observed. Analysis of H3K9 methylation indicated that various levels of methylation exist within the tissue. The rate of monomethylation in the tissue samples was lowest while the di- and trimethylation levels were similar. Conflicting results in the literature show that epigenetic mechanisms may also differ from organism to organism or from gene to gene. In the present study we could not detect any correlation between DNA methylation and H3K9 methylation. We also did not observe any correlation between the p16^{INK4A} promoter or H3K9 methylation and the clinical parameters. The lack of association with clinical characteristics is in accordance with recent reports (16,32).

In our study expression of the p16^{INK4A} gene was higher in the tumor tissue than in normal tissue in 75% of the patients. These data are in agreement with studies showing that p16^{INK4A} expression in colon carcinoma is frequently observed (31,52). It has even been reported that the majority of colorectal tumors express the p16^{INK4A} protein (53). Coexistence of p16^{INK4A} methylation and expression has also been demonstrated (54,55). Similar findings have been confirmed by various studies in which p16^{INK4A} expression in excess of 80% of the colon tumors has been observed (16,56,57). To the best of our knowledge, this is the first study comparing methylation and histone modifications of the p16^{INK4A} gene in colon tumors and corresponding normal tissue. Our results suggest that although epigenetic alterations of the p16^{INK4A} gene are frequent in colon tumors they appear to accompany other genetic alterations which play a causative role in colon carcinogenesis.

Acknowledgements

This study was supported by the Istanbul University Research Fund, project no. T-839/02062006.

References

1. Tsai HC and Baylin SB: Cancer epigenetics: linking basic biology to clinical medicine. *Cell Res* 21: 502-517, 2011.
2. Baylin SB and Jones PA: A decade of exploring the cancer epigenome: biological and translational implications. *Nat Rev Cancer* 11: 726-734, 2011.
3. Yao JY, Zhang L, Zhang X, He ZY, Ma Y, Hui LJ, Wang X and Hu Y: H3K27 trimethylation is an early epigenetic event of p16^{INK4A} silencing for regaining tumorigenesis in fusion reprogrammed hepatoma cells. *Biol Chem* 285: 18828-18837, 2010.
4. Shones DE, Cui K, Cuddapah S, Roh TY, Barski A, Wang Z, Wei G and Zhao K: Dynamic regulation of nucleosome positioning in the human genome. *Cell* 132: 887-898, 2008.
5. Rea S, Eisenhaber F, O'Carroll D, Strahl BD, Sun ZW, Schmid M, Opravil S, Mechtler K, Ponting CP, Allis CD and Jenuwein T: Regulation of chromatin structure by site-specific histone H3 methyltransferases. *Nature* 406: 593-599, 2000.
6. Noma K, Allis CD and Grewal SI: Transitions in distinct histone H3 methylation patterns at the heterochromatin domain boundaries. *Science* 293: 1150-1155, 2001.
7. Peters AH, O'Carroll D, Scherthan H, Mechtler K, Sauer S, Schöfer C, Weipoltshammer K, Pagani M, Lachner M, Kohlmaier A, *et al*: Loss of the Suv39h histone methyltransferases impairs mammalian heterochromatin and genome stability. *Cell* 107: 323-337, 2001.
8. Stallcup MR: Role of protein methylation in chromatin remodeling and transcriptional regulation. *Oncogene* 20: 3014-3020, 2001.
9. Zhang Y and Reinberg D: Transcription regulation by histone methylation: interplay between different covalent modifications of the core histone tails. *Genes Dev* 15: 2343-2360, 2001.
10. Nielsen SJ, Schneider R, Bauer UM, Bannister AJ, Morrison A, O'Carroll D, Firestein R, Cleary M, Jenuwein T, Herrera RE and Kouzarides T: Rb targets histone H3 methylation and HP1 to promoters. *Nature* 412: 561-565, 2001.
11. Herman JG, Merlo A, Mao L, Lapidus RG, Issa JP, Davidson NE, Sidransky D and Baylin SB: Inactivation of the CDKN2/p16/MTS1 gene is frequently associated with aberrant DNA methylation in all common human cancers. *Cancer Res* 55: 4525-4530, 1995.
12. Ahuja N, Mohan AL, Li Q, Stolker JM, Herman JG, Hamilton SR, Baylin SB and Issa JP: Association between CpG island methylation and microsatellite instability in colorectal cancer. *Cancer Res* 57: 3370-3374, 1997.
13. Collado M, Blasco M and Serrano M: Cellular senescence in cancer and ageing. *Cell* 130: 223-233, 2007.
14. Clark SJ and Melki J: DNA methylation and gene silencing in cancer: which is the guilty party? *Oncogene* 21: 5380-5387, 2002.
15. Gonzalez-Zulueta M, Bender CM, Yang AS, Nguyen T, Beart RW, Van Tornout JM and Jones PA: Methylation of the 5' CpG island of the p16/CDKN2 tumor suppressor gene in normal and transformed human tissues correlates with gene silencing. *Cancer Res* 4531-4535, 1995.
16. Malhotra P, Kochhar R, Vaiphei K, Wig JD and Mahmood S: Aberrant promoter methylation of p16 in colorectal adenocarcinoma in North Indian patients. *World J Gastrointest Oncol* 7: 295-303, 2010.
17. Liggett WH Jr and Sidransky D: Role of the p16 tumor suppressor gene in cancer. *J Clin Oncol* 16: 1197-1206, 1998.
18. Matsuda Y: Molecular mechanism underlying the functional loss of cyclin dependent kinase inhibitors p16 and p27 in hepatocellular carcinoma. *World J Gastroenterol* 14: 1734-1740, 2008.
19. Esteller M: The necessity of a human epigenome project. *Carcinogenesis* 27: 1121-1125, 2006.
20. Zhou J, Cao J, Lu Z, Liu H and Deng DA: 115-bp MethyLight assay for detection of p16 (CDKN2A) methylation as a diagnostic biomarker in human tissues. *BMC Med Genet* 12: 67, 2011.
21. Huang LW, Pan HS, Lin YH, Seow KM, Chen HJ and Hwang JL: P16 methylation is an early event in cervical carcinogenesis. *Int J Gynecol Cancer* 21: 452-456, 2011.
22. Zhang Y, Wang R, Song H, Huang G, Yi J, Zheng Y, Wang J and Chen L: Methylation of multiple genes as a candidate biomarker in non-small cell lung cancer. *Cancer Lett* 303: 21-28, 2011.
23. Zainuddin N, Kanduri M, Berglund M, Lindell M, Amini RM, Roos G, Sundström C, Enblad G and Rosenquist R: Quantitative evaluation of p16(INK4a) promoter methylation using pyrosequencing in de novo diffuse large B-cell lymphoma. *Leuk Res* 35: 438-443, 2011.
24. Rosenfeld JA, Wang Z, Shones DE, Zhao K, DeSalle R and Zhang MQ: Determination of enriched histone modifications in non-genic portions of the human genome. *BMC Genomics* 10: 143, 2009.
25. Barski A, Cuddapah S, Cui K, Roh TY, Schones DE, Wang Z, Wei G, Chepelev I and Zhao K: High-resolution profiling of histone methylations in the human genome. *Cell* 129: 823-837, 2007.
26. Farnham Lab Chromatin Immunoprecipitation Protocol for Tissues. UC Davis Genome Center. 2006. <http://farnham.genomecenter.ucdavis.edu/protocols/tissues.html>. Accessed April 19, 2012.
27. Baylin SB: DNA methylation and gene silencing in cancer. *Nat Clin Prac Oncol* 2 (Suppl 1): S4-S11, 2005.

28. Gal-Yam EN, Saito Y, Egger G and Jones PA: Cancer epigenetics: modifications, screening, and therapy. *Annu Rev Med* 59: 267-280, 2008.
29. Enroth S, Rada-Iglesias A, Andersson R, Wallerman O, Wanders A, Pählman L, Komorowski J and Wadelius C: Cancer associated epigenetic transitions identified by genome-wide histone methylation binding profiles in human colorectal cancer samples and paired normal mucosa. *BMC Cancer* 11: 450, 2011.
30. Bird A: DNA methylation patterns and epigenetic memory. *Genes Dev* 16: 6-21, 2002.
31. Esteller M, Corn PG, Baylin SB and Herman JG: A gene hypermethylation profile of human cancer. *Cancer Res* 61: 3225-3229, 2001.
32. Shima K, Noshio K, Baba Y, Cantor M, Meyerhardt JA, Giovannucci EL, Fuchs CS and Ogino S: Prognostic significance of CDKN2A (p16) promoter methylation and loss of expression in 902 colorectal cancers: Cohort study and literature review. *Int J Cancer* 128: 1080-1094, 2011.
33. Krtolica K, Krajnovic M, Usaj-Knezevic S, Babic D, Jovanovic D and Dimitrijevic B: Comethylation of p16 and MGMT genes in colorectal carcinoma: correlation with clinicopathological features and prognostic value. *World J Gastroenterol* 13: 1187-1194, 2007.
34. Sakamoto J, Fujiya M, Okamoto K, Nata T, Inaba Y, Moriichi K, Tanabe H, Mizukami Y, Watari J, Ashida T and Kohgo Y: Immunoprecipitation of nucleosomal DNA is a novel procedure to improve the sensitivity of serum screening for the p16 hypermethylation associated with colon cancer. *Cancer Epidemiol* 34: 194-199, 2010.
35. Guan RJ, Fu Y, Holt PR and Pardee AB: Association of K-ras mutations with p16 methylation in human colon cancer. *Gastroenterology* 116: 1063-1071, 1999.
36. Krakowczyk L, Strzelczyk JK, Adamek B, Zalewska-Ziob M, Arendt J, Półtorak S, Maciejewski B and Wiczkowski A: Methylation of the MGMT and p16 genes in sporadic colorectal carcinoma and corresponding normal colonic mucosa. *Med Sci Monit* 14: BR219-BR225, 2008.
37. Psofaki V, Kalogera C, Tzambouras N, Stephanou D, Tsianos E, Seferiadis K and Kolios G: Promoter methylation status of hMLH1, MGMT, and CDKN2A/p16 in colorectal adenomas. *World J Gastroenterol* 16: 3553-3560, 2010.
38. Barault L, Charon-Barra C, Jooste V, de la Vega MF, Martin L, Roignot P, Rat P, Bouvier AM, Laurent-Puig P, Faivre J, *et al*: Hypermethylator phenotype in sporadic colon cancer: study on a population-based series of 582 cases. *Cancer Res* 68: 8541-8546, 2008.
39. Deligezer U, Esin Akisik EE and Dalay N: A novel application of melting curves: utility of peak area calculation for relative methylation quantification. *Clin Chem Lab Med* 45: 867-873, 2007.
40. Yoshino M, Suzuki M, Tian L *et al*: Promoter hypermethylation of the p16 and Wif-1 genes as an independent prognostic marker in stage IA non-small cell lung cancers. *Int J Oncol* 35: 1201-1209, 2009.
41. Steinmann K, Sandner A, Schagdarsurengin U and Dammann RH: Frequent promoter hypermethylation of tumor-related genes in head and neck squamous cell carcinoma. *Oncol Rep* 22: 1519-1526, 2009.
42. Santini V, Kantarjian HM and Issa JP: Changes in DNA methylation in neoplasia: pathophysiology and therapeutic implications. *Ann Intern Med* 134: 573-586, 2001.
43. Sauer J, Jang H, Zimmerly EM, Kim KC, Liu Z, Chanson A, Smith DE, Mason JB, Friso S and Choi SW: Ageing, alcohol consumption and folate are determinants of genomic DNA methylation, p16 promoter methylation and the expression of p16 in the mouse colon. *Br J Nutr* 104: 24-30, 2010.
44. Keyes MK, Jang H, Mason JB, Liu Z, Crott JW, Smith DE, Friso S and Choi SW: Older age and dietary folate are determinants of genomic and p16-specific DNA methylation in mouse colon. *J Nutr* 137: 1713-1717, 2007.
45. Collins CJ and Sedivy JM: Involvement of the INK4a/Arf gene locus in senescence. *Aging Cell* 2: 145-150, 2003.
46. Krishnamurthy J, Ramsey MR, Ligon KL, Torrice C, Koh A, Bonner-Weir S and Sharpless NE: p16^{INK4a} induces an age-dependent decline in islet regenerative potential. *Nature* 443: 453-457, 2006.
47. Kondo Y, Shen L and Issa JP: Critical role of histone methylation in tumor suppressor gene silencing in colorectal cancer. *Mol Cell Biol* 23: 206-215, 2003.
48. Xiao W, Custard KD, Brown RC, Lemmon BE, Harada JJ, Goldberg RB and Fischer RL: DNA methylation is critical for Arabidopsis embryogenesis and seed viability. *Plant Cell* 18: 805-814, 2006.
49. Kondo Y, Shen L, Cheng AS, Ahmed S, Bumber Y, Charo C, Yamochi T, Urano T, Furukawa K, Kwabi-Addo B, *et al*: Gene silencing in cancer by histone H3 lysine 27 trimethylation independent of promoter DNA methylation. *Nat Genet* 40: 741-750, 2008.
50. Bachman KE, Park BH, Rhee I, Rajagopalan H, Herman JG, Baylin SB, Kinzler KW and Vogelstein B: Histone modifications and silencing prior to DNA methylation of a tumor suppressor gene. *Cancer Cell* 3: 89-95, 2003.
51. Sun Y, Jiang X, Xu Y, Ayrapetov MK, Moreau LA, Whetstone JR and Price BD: Histone H3 methylation links DNA damage detection to activation of the Tip60 tumor suppressor. *Nat Cell Biol* 11: 1376-1382, 2009.
52. King-Yin Lam A, Ong K and Ho YH: Colorectal mucinous adenocarcinoma: the clinicopathologic features and significance of p16 and p53 expression. *Dis Colon Rectum* 49: 1275-1283, 2006.
53. Kim BN, Yamamoto H, Ikeda K, Damdinsuren B, Sugita Y, Ngan CY, Fujie Y, Ogawa M, Hata T, Ikeda M, *et al*: Methylation and expression of p16^{INK4} tumor suppressor gene in primary colorectal cancer tissues. *Int J Oncol* 26: 1217-1226, 2005.
54. Tada T, Watanabe T, Kazama S, Kanazawa T, Hata K, Komuro Y and Nagawa H: Reduced p16 expression correlates with lymphatic invasion in colorectal cancers. *Hepatogastroenterology* 50: 1756-1760, 2003.
55. Shim YH, Kang GH and Ro JY: Correlation of p16 hypermethylation with p16 protein loss in sporadic gastric carcinomas. *Lab Invest* 80: 689-695, 2000.
56. Lam AK, Ong K, Giv MJ and Ho YH: p16 expression in colorectal adenocarcinoma: marker of aggressiveness and morphological types. *Pathology* 40: 580-585, 2008.
57. Palmqvist R, Rutegård JN, Bozoky B, Landberg G and Stenling R: Human colorectal cancers with an intact p16/cyclin D1/pRb pathway have up-regulated p16 expression and decreased proliferation in small invasive tumor clusters. *Am J Pathol* 157: 1947-1953, 2000.