

Neuroprotective effect of the active components of three Chinese herbs on brain iron load in a mouse model of Alzheimer's disease

XIAN-HUI DONG¹, WEI-JUAN GAO², WEI-NA KONG³, HONG-LIN XIE¹, YAN PENG¹,
TIE-MEI SHAO³, WEN-GUO YU³ and XI-QING CHAI³

¹Department of Anatomy, Chengde Medical University, Chengde, Hebei 067000;

²Department of Pathophysiology, Hebei University of Chinese Medicine, Shijiazhuang, Hebei 050200;

³Bioreactor and Protein Drug Research and Development Center of Hebei Universities,
Hebei Chemical and Pharmaceutical College, Shijiazhuang, Hebei 050000, P.R. China

Received May 21, 2014; Accepted January 9, 2015

DOI:10.3892/etm.2015.2234

Abstract. Alzheimer's disease (AD) is a neurodegenerative brain disorder and the most common cause of dementia. New treatments for AD are required due to its increasing prevalence in aging populations. The present study evaluated the effects of the active components of *Epimedium*, *Astragalus* and *Radix Puerariae* on learning and memory impairment, β -amyloid ($A\beta$) reduction and brain iron load in an APP_{swE}/PS1 $_{\Delta E9}$ transgenic mouse model of AD. Increasing evidence indicates that a disturbance of normal iron homeostasis may contribute to the pathology of AD. However, the underlying mechanisms resulting in abnormal iron load in the AD brain remain unclear. It has been hypothesized that the brain iron load is influenced by the deregulation of certain proteins associated with brain iron metabolism, including divalent metal transporter 1 (DMT1) and ferroportin 1 (FPN1). The present study investigated the effects of the active components of *Epimedium*, *Astragalus* and *Radix Puerariae* on the expression levels of DMT1 and FPN1. The treatment with the active components reduced cognitive deficits, inhibited $A\beta$ plaque accumulation, reversed $A\beta$ burden and reduced the brain iron load in AD model mice. A significant increase was observed in the levels of DMT1-iron-responsive element (IRE) and DMT1-nonIRE in the hippocampus of the AD mouse brain, which was reduced by treatment with the active components. In addition, the levels of FPN1 were significantly reduced in the hippocampus of the AD mouse brain compared with those of control mice, and these levels were increased following treatment with the active

components. Thus, the present study indicated that the active components of *Epimedium*, *Astragalus* and *Radix Puerariae* may exert a neuroprotective effect against AD by reducing iron overload in the AD brain and may provide a novel approach for the development of drugs for the treatment of AD.

Introduction

Alzheimer's disease (AD) is a neurodegenerative brain disorder and is the most common cause of dementia. AD is characterized by $A\beta$ plaque accumulation, intracellular tangles, neuronal loss in selective brain regions and a wide range of challenging behavioral disturbances, which may ultimately result in fatality (1).

Previous studies have indicated that iron is involved in the progression of AD (2), and that altered iron homeostasis may be an important factor in the pathogenesis of the disease (3). However, the underlying mechanisms resulting in the abnormal iron load in the AD brain remain unclear. It has been hypothesized that the brain iron load may be affected by the altered expression of certain brain iron metabolism-associated proteins, including divalent metal transporter 1 (DMT1) and ferroportin 1 (FPN1) (4).

DMT1, also known as natural resistance-associated macrophage protein 2 (Nramp2) or divalent cation transporter 1 (DCT1), is a proton-coupled metal ion transport protein, and was the first transmembrane iron transporter to be identified in mammals (5). DMT1 is a widely expressed protein, with 12 putative transmembrane-spanning domains, and is responsible for the uptake of a broad range of divalent metal ions (6), including Fe²⁺, Zn²⁺, Mn²⁺, Co²⁺, Cd²⁺, Cu²⁺, Ni²⁺ and Pb²⁺ (7-9). The four isoforms of DMT1 are distinguished through their mRNA transcripts, which vary at their 5'-UTR and 3'-UTR. Two of these four transcripts contain an IRE at the 3'-end (10,11). Thus, the carboxy-terminal DMT1 protein isoforms are designated -IRE and -nonIRE. FPN1 is the sole exporter of iron and is responsible for iron absorption in the intestines, recycling of erythrocyte iron by macrophages and maternal delivery of iron to the fetus (12,13).

Deferoxamine (DFO) is an iron chelator that significantly alleviates the symptoms of patients with AD, resulting in a

Correspondence to: Professor Xi-Qing Chai, Bioreactor and Protein Drug Research and Development Center of Hebei Universities, Hebei Chemical and Pharmaceutical College, 88 Fangxing Road, Shijiazhuang, Hebei 050000, P.R. China
E-mail: xqchai@163.com

Key words: Alzheimer's disease, APP/PS1 transgenic mouse, Morris water maze, β -amyloid peptide, divalent metal transporter 1, ferroportin 1

notable neuroprotective effect (14,15). However, chemical drugs may exhibit adverse effects, including oral side effects, and are costly, suggesting that research into alternative therapies is required. The use of the active components of *Epimedium*, *Astragalus* and *Radix Puerariae* may circumvent these shortcomings. Furthermore, these compounds may scavenge free radicals, reduce inflammation, adjust multiple viscera functions (16) and reduce brain iron overload (17,18).

Therefore, the present study aimed to investigate the potential role of the active components of *Epimedium*, *Astragalus* and *Radix Puerariae* on brain iron load in AD. An APP/PS1 transgenic mouse model of AD was established and treated with a mixture of the active component compounds. The Morris water maze test was used to evaluate whether the active component treatment was able to attenuate the cognitive deficits of AD in the mouse model. Following behavioral testing, the A β plaque accumulation and brain iron load in the mouse hippocampus were determined. Furthermore, the expression levels of DMT1 and FPN1 were examined to clarify the molecular mechanisms underlying the abnormal brain iron load in AD.

Materials and methods

Animals and treatments. The present study was approved by the Ethics Committee of Chengde Medical University (Chengde, China). In total, 30 male APP_{swE}/PS1 $_{\Delta E9}$ (APP/PS1) mice and ten C57BL/6J (C57) mice (both obtained from Beijing HFK Bioscience Co., Ltd., Beijing, China) were used in the present study. The APP/PS1 transgenic mouse model of AD overexpresses the Swedish (K594M/N595L) mutation of APP, with presenilin 1 (PS1) deleted in exon 9 and a C57 genetic background. The APP/PS1 mice were genotyped using polymerase chain reaction (PCR). The mice were housed under 12-h light/dark cycle conditions and were fed and watered regularly. Six-month-old APP/PS1 transgenic mice were divided at random into three groups. The AD model group contained APP/PS1 mice that received no treatment. The active component group consisted of APP/PS1 transgenic mice that received the active components of *Astragalus*, *Radix Puerariae* and *Epimedium* (120, 80 and 80 mg/kg, respectively), which was administered via oral gavage. The DFO group received 30 mg/kg DFO and was used as a positive control. In addition to the these three groups, a fourth (C57) group contained ten male C57 mice and was included as a normal control.

Preparation of the active component treatment. The treatment comprised of the active components of three Chinese medicinal herbs, *Epimedium*, *Astragalus* and *Radix Puerariae*, including icariin, astragaloside IV and puerarin, respectively (Fig. 1). These substances were purchased from Nanjing Zelang Medical Technology Co., Ltd (Nanjing, China) and were >98% pure. Icariin, astragaloside IV and puerarin were dissolved or suspended in distilled water at a ratio of 3:2:2.

Morris water maze. Behavioral examinations were conducted in a Morris water maze at week 8 of drug treatment, as described in a previous study (19). Briefly, a circular black pool (diameter, 1.2 m; depth, 55 cm) was filled with water to a depth

of 30 cm at 22°C. A clear circular platform (diameter, 10 cm) was submerged 2 cm underwater in the northeast quadrant of the pool. Each mouse underwent four trials per day for six consecutive days. During the place navigation trial, mice were placed randomly into the pool facing the wall individually from four preset starting points, and were allowed to swim for a maximum of 120 sec or until they located the platform. On the sixth day, the spatial probe trial was conducted, in which the platform was removed from the pool and the mice were allowed to swim for 120 sec. The total swim time (escape latency; sec); the number of times the animal crossed the previous location of the platform (platform-crossing); the time that the animal spent in the quadrant where the platform in (time spent in the target quadrant; sec); and the average swimming velocity (m/s) were recorded using a video tracking system (SLY-WMS Morris Water Maze System; Beijing Sunny Instruments Co., Ltd., Beijing, China). The scores of the animal behavior when searching for the platform (search strategies score) were recorded by a researcher blind to the treatment of the mouse. The search strategy categories used were direct swim, tendency search, random search and circle search, which received a score of 1, 2, 3 and 4, respectively.

Tissue preparation. Following the Morris water maze experiments, the mice were anesthetized with 50 mg/kg sodium pentobarbital (Tianjin Fu Chen Chemical Reagents Factory, Tianjin, China) administered intraperitoneally, then euthanized by decapitation. The brains were removed rapidly and divided into hemispheres on an ice-cooled board. The hippocampus and cerebral cortex were dissected from one hemisphere and stored at -80°C for western blot analysis. The remaining hemisphere was fixed in 4% paraformaldehyde (Tianjin Fu Chen Chemical Reagents Factory) in phosphate-buffered saline (PBS; Tianjin Fu Chen Chemical Reagents Factory) at 4°C overnight. The hemisphere was then embedded in paraffin (Tianjin Fu Chen Chemical Reagents Factory), cut into 5- μ m sections and stored at room temperature until required for morphological analysis.

Immunohistochemistry (IHC) and A β load measurement. Standard avidin-biotin complex IHC staining was performed to analyze the distribution of A β plaques in the APP/PS1 mouse brain. Briefly, paraffin sections were dewaxed, rehydrated and treated in 0.1 M Tris-hydrogen chloride (HCl) buffer (pH 7.4) containing 3% hydrogen peroxide (H₂O₂; Tianjin Fu Chen Chemical Reagents Factory) for 10 min to reduce endogenous peroxidase activity. Following washing with Tris-buffered saline, the sections were boiled in citric acid buffer (Tianjin Fu Chen Chemical Reagents Factory) for 3 min at 800 W in a microwave oven. The sections were then rinsed in running water, treated with 5% bovine serum albumin (Biotin-Streptavidin HRP Detection system, ZSGB-BIO, Beijing, China) for 30 min, and subsequently incubated overnight with monoclonal mouse anti-human A β antibody (1:500, #A5213; Sigma-Aldrich, St. Louis, MO, USA) at 4°C. The sections were rinsed in running water and subsequently incubated with biotinylated goat anti-mouse immunoglobulin G (IgG) (1:200; Biotin-Streptavidin HRP Detection system) for 1 h and with streptavidin peroxidase (Biotin-Streptavidin HRP Detection system) for a further 1 h at room temperature.

software for Windows, version 17.0 (SPSS, Inc., Chicago, IL, USA) and $P < 0.05$ was considered to indicate a statistically significant difference.

Results

Morris water maze. The Morris water maze experiment was conducted to investigate whether the active component treatment was able to reduce cognitive deficits in APP/PS1 mice. The ability of the mice to learn and process spatial information was tested using a Morris water maze. The analysis of the place navigation trial demonstrated that the escape latencies reduced between days 1-5 in all groups (Fig. 2A). The AD model mice exhibited longer escape latencies than the C57 control mice ($P < 0.01$). Mice in the active component and DFO groups displayed significantly reduced escape latencies compared with the AD model mice ($P < 0.01$). There was no significant difference in escape latency between the active component and DFO groups ($P > 0.79$). These results indicate that the active component treatment mitigated the impairment of spatial learning and memory in the AD model mice. Fig. 2B displays the representative swimming paths of mice in the four groups. The analysis of the spatial probe trial indicated that the percentage time spent in the target quadrant (Fig. 2C), the search strategies score (Fig. 2D), the platform-crossing times (Fig. 2E) and the average swimming velocity (Fig. 2F) varied significantly between the groups. The AD model mice spent significantly less time in the quadrant containing the platform than the C57 group mice ($P < 0.01$; Fig. 2C). The search strategies score was reduced in the AD model group compared with the C57 group ($P < 0.01$; Fig. 2D). Furthermore, the number of crossings to the previous location of the platform was reduced in the AD model group compared with the C57 control group ($P < 0.01$; Fig. 2E). The mice in the active component group spent more time in the target quadrant, scored higher in search strategies and exhibited more platform-crossing times than those in the AD model group. These results indicate that the ability of the mice to use spatial cues for the localization of the platform was impaired in the AD model group ($P < 0.01$) and was improved by treatment with the active components of *Astragalus*, *Radix Puerariae* and *Epimedium*. The average swimming velocity was increased in AD model group compared with the C57 group ($P < 0.01$). Mice in the active component and DFO groups exhibited slower average swimming velocities ($P < 0.01$), indicating that the AD model mice did more unnecessary swimming. Collectively, these results suggest that treatment with the active components of *Astragalus*, *Radix Puerariae* and *Epimedium* attenuated the cognitive deficits on learning and memory performance in AD model mice.

Treatment with the active components of *Astragalus*, *Radix Puerariae* and *Epimedium* inhibits A β plaque accumulation and reverses A β burden in the brains of APP/PS1 mice. The effects of the active components of *Astragalus*, *Radix Puerariae* and *Epimedium* on A β deposition in the APP/PS1 mouse brain were evaluated using IHC (Fig. 3). The APP/PS1 model mice exhibited a marked increase in the number and size of A β -immunoreactive senile plaques in the cortex and hippocampus. However, the active component and DFO group mice displayed a clear reduction in plaque number and

A β burden compared with the AD model mice (Fig. 3A). Quantitative analysis indicated that the plaque numbers in the brains of the AD model group significantly increased to 62.13% compared with the C57 group ($P < 0.01$; Fig. 3B). The A β burden was determined by measuring the areas of A β -positive neuritic plaques in the brain. The A β plaque area was significantly increased in the AD model group compared with the C57 group (Fig. 3B). However, the brains of active component and DFO group mice exhibited a significant reduction in plaque count and A β burden compared with AD model mice. No differences in plaque number or A β burden were identified between the active component and DFO groups (Fig. 3B).

Brain iron deposition was assessed using Perls' staining. Light blue spots were detected using the Perls' reaction without DAB; however, without DAB enhancement, Perls' reaction is not very sensitive. Therefore the concentration of the Perls' liquid was increased and the contrast of the image was altered. The influence of the active components of *Astragalus*, *Radix Puerariae* and *Epimedium* on brain iron load in the APP/PS1 mouse brain was evaluated using Perls' staining (Fig. 4A). Quantitative analysis indicated that the blue spot number in the brains of the AD model group increased significantly compared with the C57 group ($P < 0.01$; Fig. 4B). The brains of the active component and DFO groups displayed a significant reduction in blue spots compared with the AD model mice. No difference in the number of blue spots was observed between the active component and DFO groups (Fig. 4B). Thus, the AD model group exhibited a marked increase in brain iron load and the active component treatment appeared to reduce this iron load in the AD model mouse brain.

Western blot analysis. DMT1 and FPN1 proteins were extracted from the mouse hippocampus in order to quantify the differences in their expression levels between the groups. Western blot analyses for DMT1-IRE and DMT1-nonIRE revealed a clear band at 64 kDa, matching the predicted molecular mass of these proteins. Quantification of the expression levels of DMT1-IRE and DMT1-nonIRE indicated that the levels of the two proteins were significantly higher in the hippocampus of the AD model group than the C57 group, whilst the active component and DFO group mice presented a significant reduction compared with the AD model mice (Fig. 5A). Western blot analysis of FPN1 displayed a major band at 62 kDa, which matched the predicted molecular mass of these proteins. Quantification of the expression levels of FPN1 indicated a significant reduction in the hippocampus of AD model mice compared with the C57 group mice (Fig. 5B), which was partly reversed in the active component and DFO groups.

Discussion

AD is a neurodegenerative disorder, characterized clinically by progressive memory loss and neuropathologically by extracellular amyloid plaques (21). AD is a typical age-dependent neurodegenerative disease that affects 5% of individuals >65 years, 20% of those >85 years and >33% of those >90 years; >20 million people are affected worldwide (22) and this figure is

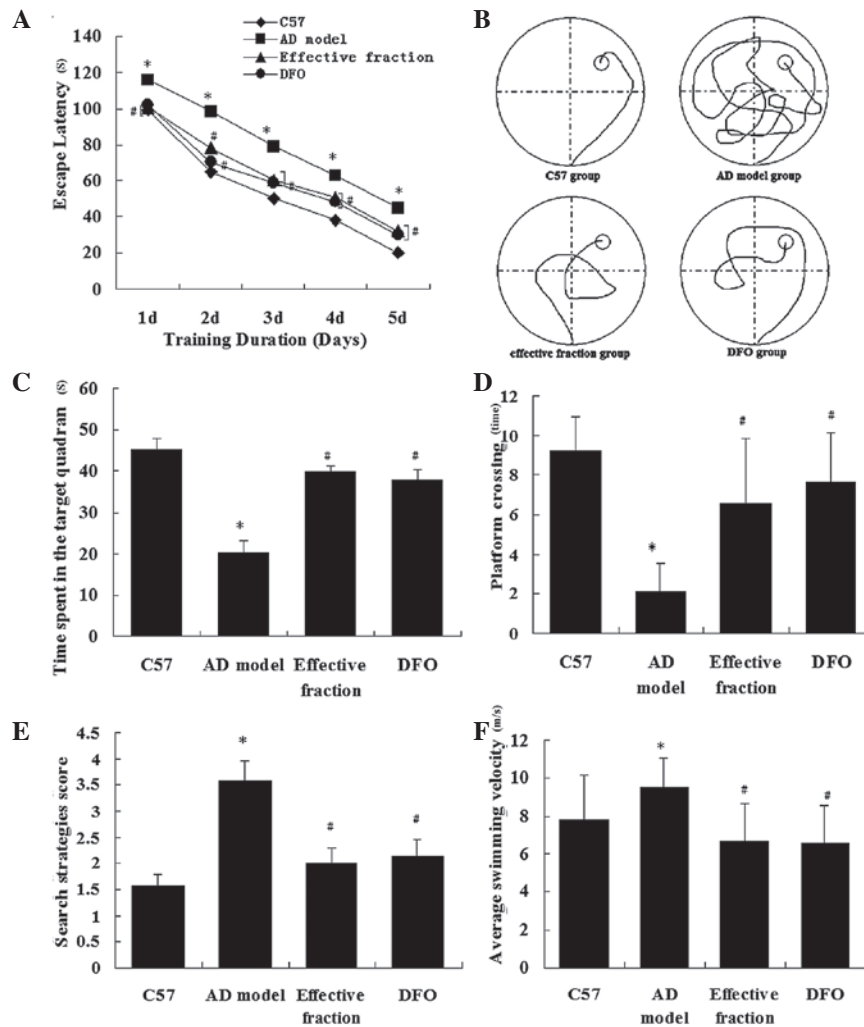


Figure 2. Behavioral performance of animals in the Morris water maze. (A) Average escape latencies. (B) Representative swimming paths on day 5 of the place navigation trial were recorded with a video tracking system. (C) Percentage time spent in the quadrant that previously contained the platform. (D) Search strategies score. (E) Number of crossings to the previous location of the platform. (F) Average swimming velocity during the spatial probe trial. Data are presented as the mean \pm standard error (n=10 per group). *P<0.01 vs. C57 and #P<0.01 vs. AD model groups. AD, Alzheimer's disease; DFO, deferoxamine.

predicted to rise in the future, due to an increase in the elderly population.

Marked progress has been made in the last 20 years in understanding the pathophysiology of AD (23). However, effective preventative and therapeutic treatments remain to be produced. In the absence of preventative and therapeutic methods, the prevalence of AD will continue to increase as life expectancy increases (24). Therefore, the development of novel treatments for AD is an urgent requirement, in view of the increasingly aged populations (25).

Previous evidence has indicated that a disturbance of normal iron homeostasis may contribute to the pathology of AD, which suggests that iron chelation may be an effective therapeutic intervention (26). The use of an iron-chelating agent, such as DFO, may significantly alleviate symptoms in patients with AD and produce a notable neuroprotective effect. However, these chemical drugs present a number of problems, including adverse effects, such as oral side effects.

Traditional Chinese medicine (TCM) is a complete medical system that has been practiced for >3,000 years. The active component treatment used in the present study was composed

of the active components of the TCM herbs *Epimedium*, *Astragalus* and *Radix Puerariae*, including icariin, astragaloside IV and puerarin, respectively. According to TCM theories, these active components may be useful in the treatment of patients with neuropsychiatric disorders. The active components of *Epimedium*, *Astragalus* and *Radix Puerariae* may circumvent the shortcomings of chemical iron-chelators. Furthermore, these compounds may scavenge free radicals, reduce inflammation, adjust the functions of multiple viscera (16) and reduce iron overload of recession in the central nervous system (17,18). The present study aimed to demonstrate these effects and to explain the underlying mechanisms using contemporary methodology and transgenic animal models of AD.

Multiple genetically modified transgenic animal models include APP/PS1/tau (27,28) and Cdk5/P35/tau. APP/PS1/tau mice express human APP695(Swe), PS1(M146V) and Tau (P301L) under the control of the mouse Thy-1 promoter.

In the present study, APP/PS1 mice were used as the AD model. The mice express human APP with the Swedish mutations (K670N/M671L) at the β -secretase cleavage site and

A

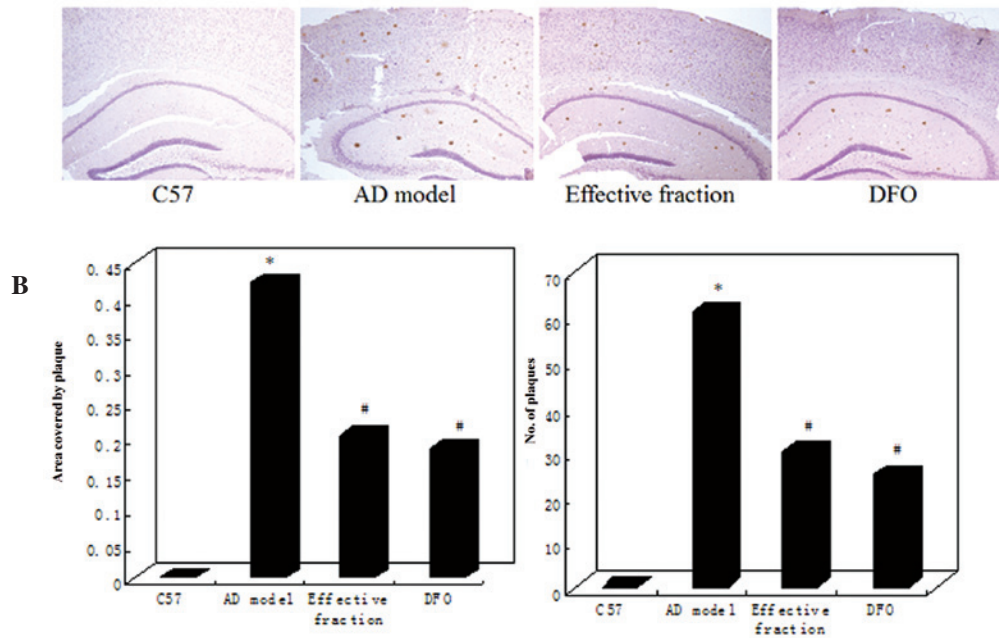
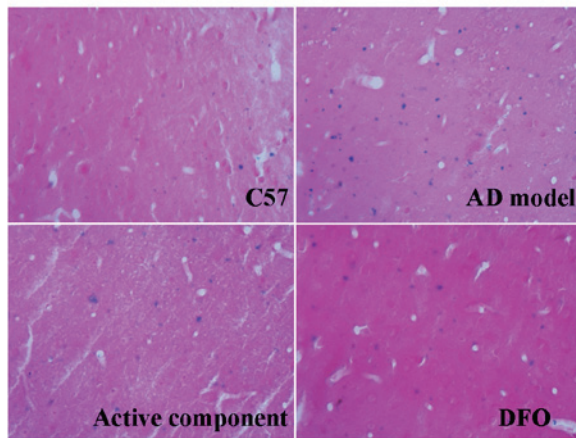


Figure 3. Active component treatment reduces A β plaque formation in the APP/PS1 mouse brain. (A) Micrographs of prepared brain tissue display A β -positive plaques in the transgenic mouse brain. Fewer A β plaques were observed in the active component and DFO group mice compared with the AD model group mice. No A β plaques were detected in the C57 group mice. (B) Quantification of A β plaques indicated that the number of (left) and area covered by (right) the A β plaques were reduced in the active component and DFO group mice compared with the AD model group mice (n=10 per group). *P<0.01 vs. C57 and #P<0.01 vs. AD model groups. AD, Alzheimer's disease; DFO, deferoxamine; A β , β -amyloid.

A



B

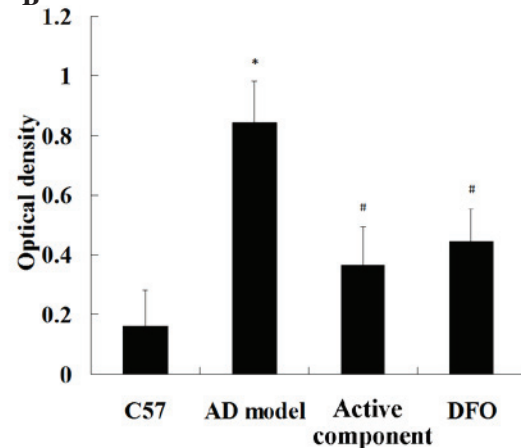


Figure 4. Treatment with the active components reduces the iron load in the APP/PS1 mouse brain. (A) Micrographs of prepared brain tissue display the iron load in the mouse brain. Fewer blue spots were observed in the active component and DFO group mice compared with the AD model group mice. Fewer blue spots were observed in the C57 group mice. (B) Quantification of the blue spots indicated that iron load was reduced in the active component and DFO group mice compared with those in the AD model group mice (n=10 per group). *P<0.01 vs. C57 and #P<0.01 vs. AD model groups. AD, Alzheimer's disease; DFO, deferoxamine.

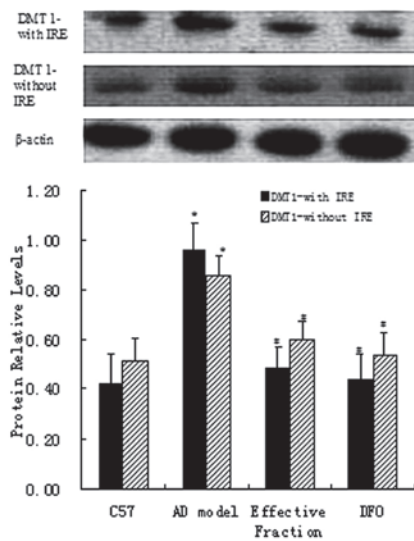
PS1 (PS1dE9) (29); with a C57BL/6J background. In addition, C57BL/6J mice were used in the normal control group. APP/PS1 mice have been reported to demonstrate impaired learning and memory in the Morris water maze test (30) and the results of the present study were consistent with this. The neuroprotective effects of the active components of *Epimedium*, *Astragalus* and *Radix Puerariae* were investigated in this mouse model in the current study.

A number of previous studies have demonstrated the neuroprotective effect of metal chelators, which may be

clinically applicable in the treatment of AD (31,32). One previous study reported that the iron chelator DFO slowed the clinical progression of cognitive decline associated with AD (3); therefore, the present study utilized DFO as a positive control.

The clinical manifestations of cognitive deficits in the early stages of AD include impaired learning and memory ability. Behavioral data obtained using the Morris water maze in the present study confirmed a significant impairment in learning and memory performance in APP/PS1 mice, which was consistent

A



B

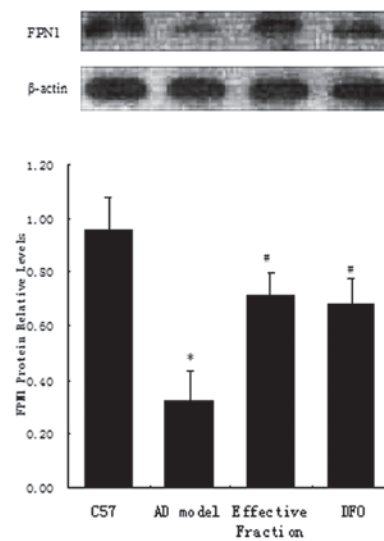


Figure 5. Influence of active component treatment on the protein levels of DMT1 and FPN1. Levels of (A) DMT1-IRE, DMT1-nonIRE and (B) FPN1 (n=10 per group). *P<0.01 vs. C57 and #P<0.01 vs. AD model groups (two-way analysis of variance). DMT1-IRE, divalent metal transporter 1-iron response element; FPN-1, ferroportin-1, AD, Alzheimer's disease; DFO, deferoxamine.

with previous studies (33,34). Collectively, the escape latency, platform-crossing, time spent in the target quadrant and average swimming velocity results suggested that the active component treatment improved the learning and memory deficits of the AD model mice. These results substantiated the presence of neurotoxicity in the model mouse brain and indicated that the active component treatment was able to attenuate the resulting cognitive deficits associated with AD.

The deposition of Aβ in the brain induces a series of neurotoxic effects and is considered to be the primary factor in the emergence and progression of AD (35,36). The most common form of Aβ is Aβ1-42, located primarily in discrete Aβ deposits. The more soluble Aβ1-40 form is associated with blood vessels (37) and may develop later in the course of the disease (38). The reduction of Aβ levels, particularly the more toxic Aβ1-42 form, is considered to be one of the most important therapeutic targets for the treatment of AD. Prior studies indicate that increased Aβ production in the hippocampus and cortex leads to synaptic impairment, neuronal loss and memory deficits (39,40). Furthermore, synaptic dysfunction has been identified in the associated cortices and hippocampus of the AD brain (41,42). These observations suggest that the excessive production of Aβ peptides in the brain is a pivotal factor in AD pathology. In the present study, Aβ neuropathology was quantified using immunohistochemistry. Treatment with the active components of *Astragalus*, *Radix Puerariae* and *Epimedium* inhibited Aβ plaque accumulation and reversed the Aβ burden in the APP/PS1 mouse brain.

Iron is an essential nutrient involved in numerous vital biological processes, and iron deficiency and overdose are harmful to the health of humans. Therefore, iron homeostasis is a strictly regulated process in healthy individuals. The uptake, use, storage and excretion of iron are maintained in a dynamic balance to ensure that the iron content in the body

can fulfill physiological needs without excessive accumulation.

Iron is an intrinsic producer of reactive oxygen species through associated processes including hydroxyl radical formation, glutathione consumption, protein aggregation, lipid peroxidation and nucleic acid modification (43). Factors that disturb iron homeostasis may lead to disease; therefore, iron metabolism has long been the focus and interest of numerous researchers.

Metal ions are implicated in the pathogenesis of AD (44,45) and have been demonstrated to participate in APP expression, Aβ generation and the production of oxidative compounds (46,47). Therefore, it can be hypothesized that metal transporters may serve important functions in the pathogenesis of AD by altering metal homeostasis (48,49). In the present study, the brain iron load was evaluated using Perls' staining and iron was observed to accumulate in the AD brain. Treatment with the active components of *Astragalus*, *Radix Puerariae* and *Epimedium* was observed to relieve brain iron overload of the AD model mice.

In the previous ten years, considerable progress has been achieved in the study of iron metabolism. Numerous genes and proteins have been associated with iron metabolism, including DMT1 (5), transferrin receptor 2 (50), FPN1 (51,52), hephaestin (53,54) and hepcidin (55,56). These studies and others have improved the understanding of iron metabolism and its regulation, and provide a scientific basis for further characterizing the molecular mechanisms of iron metabolism-associated diseases. It has been indicated that the expression and regulation of these genes is tissue-specific and that their expression may be directly or indirectly affected by the iron status in the body (57).

Cellular iron homeostasis is regulated by the iron transporters DMT1 and FPN1. The primary iron uptake transporter is DMT1, while FPN1 (58) functions essentially as an iron

efflux transporter (59). DMT1 is involved in iron uptake, which is widely distributed in mammalian tissues. DMT1 is known to contribute to neurodegeneration in animal models of Parkinson's disease (60); however, a comprehensive description of DMT1 in the AD pathogenesis has not yet been established.

Notably, a previous study on rat brains demonstrated that the expression of the IRE and non-IRE isoforms of DMT1 increase with age (60) and thus, DMT1 has been hypothesized to be the primary risk factor in AD. In the present study, western blot analysis was used to detect the levels of brain iron load-associated DMT1 and FPN1. The levels of the two isoforms of DMT1 were significantly increased in the AD model hippocampus compared with the healthy C57 control, and the level of FPN1 was significantly reduced. Thus, the results of the present study are essentially consistent with the previous study (11). However, the molecular mechanisms responsible for these effects require further investigation.

The underlying mechanisms that result in an abnormal brain iron load may involve the overexpression of the brain iron metabolism-associated proteins DMT1 and FPN1. These results suggest that DMT1 and FPN1 serve critical functions in the iron-mediated neuropathogenesis of AD and that pharmacological inhibition of DMT1 and FPN1 may provide novel therapeutic strategies for treating AD.

In conclusion, treatment with the active components of *Epimedium*, *Astragalus* and *Radix Puerariae* improved the learning and memory deficits of APP/PS1 mice and reduced the A β and iron load in the AD brain. Therefore, the active components of *Epimedium*, *Astragalus* and *Radix Puerariae* may be clinically applicable for the prevention or treatment of AD.

Acknowledgements

The present study was supported by grants from the National Natural Science Foundation of China (no. 81273983), Natural Science Foundation of Hebei Province (no. C2010001471) and the Science and Technology Research Youth Fund Project of Hebei Colleges and Universities (no. Q2012036).

References

- Zhang J, Zhen YF, Pu-Bu-Ci-Ren, *et al*: Salidroside attenuates beta amyloid-induced cognitive deficits via modulating oxidative stress and inflammatory mediators in rat hippocampus. *Behav Brain Res* 244: 70-81, 2013.
- El Tannir El Tayara N, Delatour B, Le Cudennec C, *et al*: Age-related evolution of amyloid burden, iron load, and MR relaxation times in a transgenic mouse model of Alzheimer's disease. *Neurobiol Dis* 22: 199-208, 2006.
- Crapper McLachlan DR, Dalton AJ, Kruck TP, *et al*: Intramuscular desferrioxamine in patients with Alzheimer's disease. *Lancet* 337: 1304-1308, 1991.
- Xian-Hui D, Wei-Juan G, Tie-Mei S, *et al*: Age-related changes of brain iron load changes in the frontal cortex in APPswe/PS1 Δ E9 transgenic mouse model of Alzheimer's disease. *J Trace Elem Med Biol*, Dec 3, 2014 (Epub ahead of print).
- Fleming MD, Trenor CC 3rd, Su MA, *et al*: Microcytic anaemia mice have a mutation in Nramp2, a candidate iron transporter gene. *Nat Genet* 16: 383-386, 1997.
- Li H, Li F, Sun H and Qian ZM: Membrane-inserted conformation of transmembrane domain 4 of divalent-metal transporter. *Biochem J* 372: 757-766, 2003.
- Zhang LH, Wang X, Zheng ZH, *et al*: Altered expression and distribution of zinc transporters in APP/PS1 transgenic mouse brain. *Neurobiol Aging* 31: 74-87, 2010.
- Gunshin H, Mackenzie B, Berger UV, *et al*: Cloning and characterization of a mammalian proton-coupled metal-ion transporter. *Nature* 388: 482-488, 1997.
- Erikson KM and Aschner M: Increased manganese uptake by primary astrocyte cultures with altered iron status is mediated primarily by divalent metal transporter. *Neurotoxicology* 27: 125-130, 2006.
- Lee PL, Gelbart T, West C, *et al*: The human Nramp2 gene: characterization of the gene structure, alternative splicing, promoter region and polymorphisms. *Blood Cells Mol Dis* 24: 199-215, 1998.
- Mackenzie B, Takanaga H, Hubert N, *et al*: Functional properties of multiple isoforms of human divalent metal-ion transporter 1 (DMT1). *Biochem J* 403: 59-69, 2007.
- De Domenico I, Nemeth E, Nelson JM, *et al*: The hepcidin-binding site on ferroportin is evolutionarily conserved. *Cell Metab* 8: 146-156, 2008.
- Donovan A, Lima CA, Pinkus JL, *et al*: The iron exporter ferroportin/Slc40a1 is essential for iron homeostasis. *Cell Metab* 1: 191-200, 2005.
- Wan S, Hua Y, Keep RF, *et al*: Deferoxamine reduces CSF free iron levels following intracerebral hemorrhage. *Acta Neurochir Suppl* 96: 199-202, 2006.
- Hishikawa T, Ono S, Ogawa T, *et al*: Effects of deferoxamine-activated hypoxia-inducible factor-1 on the brainstem after subarachnoid hemorrhage in rats. *Neurosurgery* 62: 232-241, 2008.
- Gao J, Inagaki Y and Liu Y: Research progress on flavonoids isolated from traditional Chinese medicine in treatment of Alzheimer's disease. *Intractable Rare Dis Res* 2: 3-10, 2013.
- Liu XY, Zi H, Zheng HX, *et al*: Tissues distribution of Icaritin and its metabolites in kidney of osteoporosis model rats. *Zhongguo Shiyan Fangxiue Zazhi* 20: 125-128, 2014.
- Chen GH and Huang WF: Progress in pharmacological effects of compositions of *Astragalus membranaceus*. *Zhongguo Xinyao Zazhi* 17: 1482-1485, 2008.
- Morris R: Developments of a water-maze procedure for studying spatial learning in the rat. *J Neurosci Methods* 11: 47-60, 1984.
- Gu Y, Hua Y, Keep RF, *et al*: Deferoxamine reduces intracerebral hematoma-induced iron accumulation and neuronal death in piglets. *Stroke* 40: 2241-2243, 2009.
- Yin C, Li S, Zhao W and Feng J: Brain imaging of mild cognitive impairment and Alzheimer's disease. *Neural Regen Res* 8: 435-444, 2013.
- Blennow K, de Leon MJ and Zetterberg H: Alzheimer's disease. *Lancet* 368: 387-403, 2006.
- Imbimbo BP, Lombard J and Pomara N: Pathophysiology of Alzheimer's disease. *Neuroimaging Clin N Am* 15: 727-753, 2005.
- Nojima J, Maeda A, Aoki S, *et al*: Effect of rice-expressed amyloid β in the Tg2576 Alzheimer's disease transgenic mouse model. *Vaccine* 29: 6252-6258, 2011.
- Tang J, Wu L, Huang HL, *et al*: Back propagation artificial neural network for community Alzheimer's disease screening in China. *Neural Regen Res* 8: 270-276, 2013.
- Guo C, Wang T, Zheng W, *et al*: Intranasal deferoxamine reverses iron-induced memory deficits and inhibits amyloidogenic APP processing in a transgenic mouse model of Alzheimer's disease. *Neurobiol Aging* 34(2):562-75, 2013.
- Overk CR, Perez SE, Ma C, *et al*: Sex steroid levels and AD-like pathology in 3xTgAD mice. *J Neuroendocrinol* 25: 131-144, 2013.
- Marques SC, Lemos R, Ferreira E, *et al*: Epigenetic regulation of BACE1 in Alzheimer's disease patients and in transgenic mice. *Neuroscience* 220: 256-266, 2012.
- Yang Y, Shiao C, Hemingway JF, *et al*: Suppressed retinal degeneration in aged wild type and APPswe/PS1 Δ E9 mice by bone marrow transplantation. *PLoS One* 8: e64246, 2013.
- Cheng D, Low JK, Logge W, *et al*: Novel behavioural characteristics of female APPswe/PS1 Δ E9 double transgenic mice. *Behav Brain Res* 260: 111-118, 2014.
- Whitnall M and Richardson DR: Iron: a new target for pharmacological intervention in neurodegenerative diseases. *Semin Pediatr Neurol* 13: 186-197, 2006.
- Guo C, Wang T, Zheng W, *et al*: Intranasal deferoxamine reverses iron-induced memory deficits and inhibits amyloidogenic APP processing in a transgenic mouse model of Alzheimer's disease. *Neurobiol Aging* 34: 562-575, 2013.
- Wu J, Bie B, Yang H, *et al*: Activation of the CB2 receptor system reverses amyloid-induced memory deficiency. *Neurobiol Aging* 34: 791-804, 2013.

34. Han M, Liu Y, Tan Q, *et al*: Therapeutic efficacy of stemazole in a beta-amyloid injection rat model of Alzheimer's disease. *Eur J Pharmacol* 657: 104-110, 2011.
35. Hardy J and Allsop D: Amyloid deposition as the central event in the aetiology of Alzheimer's disease. *Trends Pharmacol Sci* 12: 383-388, 1991.
36. Park MH, Lee JK, Choi S, *et al*: Recombinant soluble neprilysin reduces amyloid-beta accumulation and improves memory impairment in Alzheimer's disease mice. *Brain Res* 1529: 41-52, 2013.
37. Miller DL, Papayannopoulos IA, Styles J, *et al*: Peptide compositions of the cerebrovascular and senile plaque core amyloid deposits of Alzheimer's disease. *Arch Biochem Biophys* 301: 41-52, 1993.
38. Delacourte A, Sergeant N, Champain D, *et al*: Nonoverlapping but synergetic tau and APP pathologies in sporadic Alzheimer's disease. *Neurology* 59: 398-407, 2002.
39. Lue LF, Kuo YM, Roher AE, *et al*: Soluble amyloid beta peptide concentration as a predictor of synaptic change in Alzheimer's disease. *Am J Pathol* 155: 853-862, 1999.
40. Li S, Jin M, Koeglsperger T, *et al*: Soluble A β oligomers inhibit long-term potentiation through a mechanism involving excessive activation of extrasynaptic NR2B-containing NMDA receptors. *J Neurosci* 31: 6627-6638, 2011.
41. Masliah E, Mallory M, Alford M, *et al*: Altered expression of synaptic proteins occurs early during progression of Alzheimer's disease. *Neurology* 56: 127-129, 2001.
42. Sze CI, Troncoso JC, Kawas C, *et al*: Loss of the presynaptic vesicle protein synaptophysin in hippocampus correlates with cognitive decline in Alzheimer disease. *J Neuropathol Exp Neurol* 56:933-944, 1997.
43. Jomova K and Valko M: Importance of iron chelation in free radical-induced oxidative stress and human disease. *Curr Pharm Des* 17: 3460-3473, 2011.
44. Huang X, Atwood CS, Moir RD, *et al*: Trace metal contamination initiates the apparent auto-aggregation, amyloidosis, and oligomerization of Alzheimer's A β peptides. *J Biol Inorg Chem* 9: 954-960, 2004.
45. Liu G, Huang W, Moir RD, *et al*: Metal exposure and Alzheimer's pathogenesis. *J Struct Biol* 155: 45-51, 2006.
46. Lovell MA, Robertson JD, Teesdale WJ, *et al*: Copper, iron and zinc in Alzheimer's disease senile plaques. *J Neurol Sci* 158: 47-52, 1998.
47. Finefrock AE, Bush AI and Doraiswamy PM: Current status of metals as therapeutic targets in Alzheimer's disease. *J Am Geriatr Soc* 51: 1143-1148, 2003.
48. Colangelo V, Schurr J, Ball MJ, *et al*: Gene expression profiling of 12633 genes in Alzheimer hippocampal CA1: transcription and neurotrophic factor down-regulation and up-regulation of apoptotic and pro-inflammatory signaling. *J Neurosci Res* 70: 462-473, 2002.
49. Zhang LH, Wang X, Stoltenberg M, *et al*: Abundant expression of zinc transporters in the amyloid plaques of Alzheimer's disease brain. *Brain Res Bull* 77: 55-60, 2008.
50. Kawabata H, Germain RS, Vuong PT, *et al*: Transferrin receptor2-alpha supports cell growth both in iron-chelated cultured cells and in vivo. *J Biol Chem* 275, 16618-16625, 2000.
51. McKie AT, Marciani P, Rolfs A, *et al*: A novel duodenal iron-regulated transporter, IREG1, implicated in the basolateral transfer of iron to the circulation. *Mol Cell* 5: 299-309, 2000.
52. Abboud S and Haile DJ: A novel mammalian iron-regulated protein involved in intracellular iron metabolism. *J Biol Chem* 275: 19906-19912, 2000.
53. Hellman NE and Gitlin JD: Ceruloplasmin metabolism and function. *Annu Rev Nutr* 22: 439-458, 2002.
54. Anderson GJ, Frazer DM, McKie AT and Vulpe CD: The ceruloplasmin homolog hephaestin and the control of intestinal iron absorption. *Blood Cells Mol Dis* 29: 367-375, 2002.
55. Fleming RE and Sly WS: Hepcidin: a putative iron-regulatory hormone relevant to hereditary hemochromatosis and the anemia of chronic disease. *Proc Natl Acad Sci USA* 98: 8160-8162, 2001.
56. Krause A, Neitz S, Mägert HJ, *et al*: LEAP-1, a novel highly disulfide-bonded human peptide, exhibits antimicrobial activity. *FEBS Lett* 480: 147-150, 2000.
57. Shawki A and Mackenzie B: Interaction of calcium with the human divalent metal-ion transporter-1. *Biochem Biophys Res Commun* 393: 471-475, 2010.
58. Donovan A, Brownlie A, Zhou Y, *et al*: Positional cloning of zebrafish ferroportin1 identifies a conserved vertebrate iron exporter. *Nature* 403: 776-781, 2000.
59. Anderson GJ and Vulpe CD: Mammalian iron transport. *Cell Mol Life Sci* 66: 3241-3261, 2009.
60. Ke Y, Chang YZ, Duan XL, *et al*: Age-dependent and iron-independent expression of two mRNA isoforms of divalent metal transporter 1 in rat brain. *Neurobiol Aging* 26: 739-748, 2005.