

Identification of key genes influenced by fixation stability in early fracture hematoma and elucidation of their roles in fracture healing

CHENGXUE WANG¹, BAOCHANG QI¹, CONGFENG ZHANG² and JIEPING CHENG³

¹Department of Orthopedic Trauma, The First Hospital of Jilin University, Changchun, Jilin 130021;

²Department of Orthopedics, The Second People's Hospital of Yushu; ³Department of Orthopedics, The Second Hospital of Jilin University, Changchun, Jilin 130041, P.R. China

Received March 7, 2016; Accepted February 24, 2017

DOI: 10.3892/etm.2017.5192

Abstract. The present study aimed to identify the key genes influenced by fixation stability in early fracture hematoma and to elucidate their roles in fracture healing. The GSE53256 gene expression profile, including six fracture hematoma tissues, was downloaded from the Gene Expression Omnibus database. The differentially expressed genes (DEGs) in the fracture hematoma tissues from old rats with rigid fixation compared with semi-rigid fixation were identified using the limma package. Furthermore, Gene Ontology (GO) enrichment analysis for DEGs was performed using BiNGO, and a protein-protein interaction (PPI) network was constructed based on the Search Tool for the Retrieval of Interacting Genes database. A total of 265 DEGs (158 upregulated and 107 downregulated) in the fracture hematoma tissues were screened out. Additionally, the overrepresented GO terms were mainly associated with the extracellular region, positive regulation of locomotion and response to external stimulus. Transforming growth factor, β 1 (Tgf β 1), chemokine (C-X-C motif) ligand 12 (Cxcl12), matrix metalloproteinase 9 (mmp9) and serpin peptidase inhibitor, clade E, member 1 (serpine1) had higher degrees and were hub nodes in the PPI network. In conclusion, fixation stability may influence the fracture healing process, and important DEGs, including Cxcl12, mmp9, Tgf β 1 and serpine1, may be important in this process.

Introduction

Bone regeneration is a cascade of complex biological events of bone induction and translation, and is required to optimize skeletal repair and restore skeletal function (1,2). It has been shown to be involved in numerous conditions, including skeletal reconstruction of large bone defects created by trauma, orthopedic surgery and osteotomy (3). The most common form of bone regeneration is fracture healing in the clinical setting (4). Thus, understanding the mechanism of fracture healing and accelerating the overall regeneration process will help to improve the healing outcome and alleviate the pain felt by patients to some extent.

Fracture consolidation can be influenced by mechanical factors, and mechanical stability is confirmed to be a key factor for determining the healing outcome of bone regeneration (5,6). It has also been demonstrated that the optimal fixation rigidity, which is neither too stiff nor too gentle, is associated with the fastest growth of the bone (7). Ranganathan *et al* (8) also reported that an appropriate fixation stability was necessary to promote timely fracture healing. In addition, the early fracture hematoma has been shown to have potency and potential in fracture healing and has become a subject of attention (9). An *in vitro* study has indicated that fracture hematoma contains multilineage mesenchymal progenitor cells able to differentiate into a chondrogenic or osteogenic cell type and thus is important in bone healing (10). Furthermore, fracture hematoma has been shown to contain growth factor vascular endothelial growth factor, which is crucial in angiogenesis and fracture healing (11,12). Sarahrudi *et al* (13) demonstrated that fracture hematoma had significantly higher concentrations of transforming growth factor, β 1 (Tgf β 1) than the peripheral serum of patients. Therefore, the early fracture hematoma may be important in the early healing period and may determine the healing outcome. Furthermore, gene expression in the early fracture hematoma is also reported to be influenced by fixation stability (14). However, it so far remains incompletely understood what molecules are involved in the early fracture hematoma associated with fixation stability, as well as their roles during fracture healing.

Correspondence to: Dr Jieping Cheng, Department of Orthopedics, The Second Hospital of Jilin University, 18 Ziqiang Street, Changchun, Jilin 130041, P.R. China
E-mail: cheeijp@163.com

Key words: fixation stability, fracture hematoma, fracture healing, differentially expressed genes, Gene Ontology enrichment analysis, protein-protein interaction network

In a previous study, GSE53256 microarray data was utilized to analyze the interactive effects of age and mechanical stability on bone defect healing using an early transcriptional analysis (14). In the present study, the GSE53256 microarray data was downloaded and a bioinformatics approach was applied in order to identify the differentially expressed genes (DEGs) in fracture hematoma tissues from old rats with rigid fixation in comparison with fracture hematoma tissues from old rats with semi-rigid fixation. In addition, functional enrichment analysis and protein-protein interaction (PPI) network analysis were performed. The aim was to identify the potential key genes influenced by fixation stability in early fracture hematoma, as well as to elucidate their roles in the process of fracture healing.

Materials and methods

Affymetrix microarray data. The gene expression profile of GSE53256 deposited by Ode *et al.* (14) was obtained from the Gene Expression Omnibus (<http://www.ncbi.nlm.nih.gov/geo/>) database; the profile was performed on the platform of GPL1335 [Rat 230_2] Affymetrix Rat Genome 230 2.0 Array (Affymetrix, Santa Clara, CA, USA). A total of 12 fracture hematoma tissues from four groups of Sprague-Dawley rats with a 1.5-mm osteotomy gap in the femora with varying age (12 vs. 52 weeks) and fixator stiffness (rigid vs. semi-rigid fixation; $n=3$ per group) were used for the development of this microarray data. However, in this study, only the expression data from the six fracture hematoma tissues of the old (52-week-old) rats after 3 days of an osteotomy and with rigid or semi-rigid fixation were used for the analysis.

Data preprocessing and DEG screening. The raw expression data were first background corrected and quantile normalized by the robust multiarray average (15) method with application of the Affy package in R/Bioconductor. Next, the DEGs in fracture hematoma tissues from old rats with rigid fixation compared with fracture hematoma tissues from old rats with semi-rigid fixation were identified using limma (16) package in R/Bioconductor (<http://www.bioconductor.org/packages/release/bioc/html/limma.html>), where a fold-change ≥ 1.5 and $P < 0.05$ were defined as the cutoff value. Additionally, hierarchical clustering analysis of the DEGs was performed and visualized using the pheatmap package in R (17).

Functional enrichment analysis. Gene Ontology (GO; <http://www.geneontology.org>) (18) is widely applied for the biological unification of large-scale gene lists, which are mainly classified into three categories, namely biological process (BP), molecular function and cellular component. In the present study, GO-BP enrichment analysis for DEGs was performed using the BiNGO (<http://www.psb.ugent.be/cbd/papers/BiNGO/>) (19) plugin and was then visualized using Cytoscape software (20). In order to reduce false positives, multiple testing correction was performed using the Benjamini-Hochberg method (21), and the P-value was then adjusted as the false discovery rate (FDR). Finally, significant enrichment threshold of GO-BP terms was set as $FDR < 0.05$.

PPI network construction. The Search Tool for the Retrieval of Interacting Genes (STRING; <http://string-db.org/>) (22) database collects experimental and predicted information associated with the interactions of protein pairs in a given cell context via calculating the combined score of PPIs. The higher the combined score, the more reliable the PPIs are. In the present study, PPIs with a combined score > 0.4 were considered to be significant. Thus, the DEGs were mapped into PPIs and a PPI network was then constructed based on the information of the STRING database.

Results

DEG analysis. Following data processing, the data was normalized for subsequent analysis. A total of 265 DEGs were obtained using the limma package in fracture hematoma tissues from old rats with rigid fixation compared with fracture hematoma tissues from old rats with semi-rigid fixation, and included 158 upregulated and 107 downregulated genes. For example, chemokine (C-X-C motif) ligand 12 (Cxcl12), chemokine (C-C motif) ligand 9 (Ccl9) and matrix metalloproteinase 9 (mmp9) were upregulated, while Tgf β 1, serpin peptidase inhibitor, clade E (nexin, plasminogen activator inhibitor type 1), member 1 (serpinel1) and angiotensin II receptor, type 1a (Agtr1a) were downregulated. The heat map plot of DEGs derived from hierarchical clustering analysis is shown in Fig. 1.

GO enrichment analysis. In order to understand the function of these DEGs, GO enrichment analysis was performed for DEGs. Table I displays the top 20 most significant GO-BPs, and the most overrepresented GO terms of these DEGs were found to be associated with the extracellular region, positive regulation of locomotion, response to external stimulus, positive regulation of cell migration and response to wounding.

PPI network analysis. Based on the information of the STRING database, the PPI network of DEGs was constructed with 153 nodes and 302 edges (Fig. 2). Additionally, the node degree distribution displayed that this PPI network was a scale-free network (Fig. 3). The biggest characteristic of the scale-free network was that a small number of nodes had higher degrees while the majority of the nodes had lower degrees, indicating that nodes with higher degrees may be important in network connectivity. Therefore, the nodes Tgf β 1 (degree, 20), Cxcl12 (degree, 19), Ccl9 (degree, 18), mmp9 (degree, 17), kinase insert domain receptor (degree, 15), platelet derived growth factor receptor, β polypeptide (degree, 14), serpinel1 (degree, 14), cadherin 2 (degree, 13), peroxisome proliferator-activated receptor γ (degree, 13) and Agtr1a (degree, 12) were hub proteins in the PPI network (Table II).

Discussion

The early phase of bone healing is likely to be sensitive to the conditions of mechanical loading (23). In the present study, a bioinformatics approach was used to identify key genes influenced in fixation stability from fracture hematoma tissues harvested 3 days post-osteotomy. Upregulated genes,

including Cxcl12 and mmp9, and downregulated genes, such as Tgfβ1 and serpin1, were identified as hub nodes and appeared to be important in the process of fracture healing associated with fixation stability.

The fracture healing process may be divided into three stages: Acute inflammation, repair and remodeling (24). In the present study, upregulated genes, including Cxcl12 and mmp9, were key inflammatory cytokines and may be involved in the initial inflammatory response as the first step of fracture healing. The chemokine Cxcl12 has been identified to regulate the inflammatory response associated with the healing process (25). Furthermore, it is an important contributor to bone marrow MSC homing and localization within the bone marrow (26). Grassi *et al* (27) also indicated that Cxcl12 was involved in a number of inflammatory pathologies and was crucial in the regulation of osteoclast differentiation and function. In addition, mmp9 has been confirmed to have effects on skeletal cell differentiation during fracture healing via regulation of the inflammatory response and the inflammatory cell distribution (28). Furthermore, Beamer *et al* (12) demonstrated that mmp9 was implicated in the regulation of chondrogenic and osteogenic cell differentiation during the early stages of bone repair. Notably, Wang *et al* (29) indicated that the mechanical environment affected the inflammatory response and influenced skeletal cell differentiation during bone repair via the regulation of mmp9. Therefore, the results of the present study imply that fixation stability may induce an inflammatory response during fracture healing via the regulation of Cxcl12 and mmp9.

Tgfβ1 was identified as a hub node in the PPI network with the highest degree. It is a member of the transforming growth factor-β family and functions as a regulatory protein involved in bone remodeling during the fracture healing process (13). Furthermore, Tgfβ1 is thought to induce the migration of bone mesenchymal stem cells and to regulate the coordination of bone resorption and subsequent bone formation (30). Additionally, it has also been found to be involved in fracture healing through regulation of the activation and differentiation of osteoblasts and osteoclasts (31). Tgfβ1 induces the production of extracellular bone matrix proteins, including alkaline phosphatase, collagen, osteonectin, osteopontin and proteoglycans (32,33), and can regulate different cell types implicated in bone turnover and fracture healing (34). Therefore, Tgfβ1 may be important in the regulation of bone remodeling during the fracture healing process. However, in the present study, Tgfβ1 was downregulated in fracture hematoma tissues from old rats with rigid fixation compared with fracture hematoma tissues from old rats with semi-rigid fixation, implying that rigid fixation may influence bone remodeling during the fracture healing process by the downregulation of Tgfβ1.

Furthermore, serpin1 was identified as another downregulated hub node. Serpin1 [also known as plasminogen activator inhibitor-1 (PAI-1)], as a component of the fibrinolytic system, is the principal inhibitor of plasminogen activators (35). It has been shown to have various functions, including regulation of extracellular matrix (ECM) degradation and cell migration (36). Tamura *et al* (37) confirmed that PAI-1 suppressed the mRNA expression levels of runt-related transcription factor 2 and type I collagen in primary

Table I. Top 20 most significant pathways.

GO-ID	Description	Corrected P-value
44421	Extracellular region part	2.49x10 ⁻¹²
40017	Positive regulation of locomotion	5.06x10 ⁻⁹
9605	Response to external stimulus	5.06x10 ⁻¹⁰
30335	Positive regulation of cell migration	1.02x10 ⁻⁹
9611	Response to wounding	1.04x10 ⁻⁹
5576	Extracellular region	1.53x10 ⁻⁹
51272	Positive regulation of cellular component movement	1.80x10 ⁻⁹
42221	Response to chemical stimulus	1.85x10 ⁻⁹
32879	Regulation of localization	3.69x10 ⁻⁹
5615	Extracellular space	6.92x10 ⁻⁹
6954	Inflammatory response	1.25x10 ⁻⁸
32502	Developmental process	2.14x10 ⁻⁸
30334	Regulation of cell migration	2.27x10 ⁻⁸
42330	Taxis	2.27x10 ⁻⁸
6935	Chemotaxis	2.27x10 ⁻⁸
7275	Multicellular organismal development	2.40x10 ⁻⁸
31012	Extracellular matrix	3.70x10 ⁻⁸
40011	Locomotion	4.00x10 ⁻⁸
48731	System development	5.95x10 ⁻⁸
8009	Chemokine activity	7.92x10 ⁻⁸

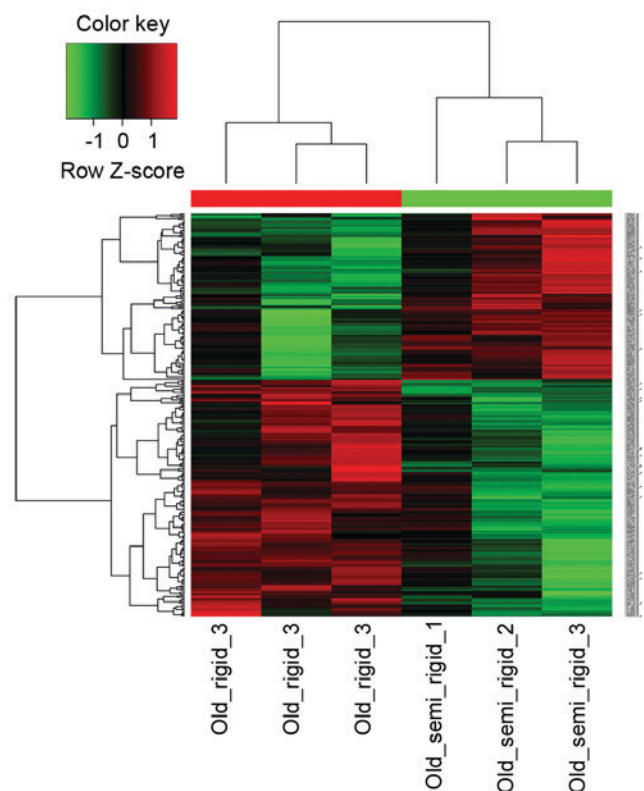


Figure 1. Heatmap plot of differentially expressed genes across old samples. The labels on the abscissa axis below the plot represent samples, and the markings above the plot represent the clustering of samples. The markings on the longitudinal axis represent the clustering of differentially expressed genes. Red represents high expression and green represents low expression.

Table II. Genes with degree ≥ 10 .

Gene	Name	Log FC	Degree
Tgfb1	Transforming growth factor, β 1	-1.567666199	20
Cxcl12	Chemokine (C-X-C motif) ligand 12	0.8016909	19
Ccl9	Chemokine (C-C motif) ligand 9	0.588012021	18
Mmp9	Matrix metalloproteinase 9	1.752023742	17
Kdr	Kinase insert domain receptor	0.846463992	15
Pdgfrb	Platelet derived growth factor receptor, β polypeptide	0.906423663	14
Serpine1	Serpin peptidase inhibitor, clade E (nexin, plasminogen activator inhibitor type 1), member 1	-1.17741059	14
Cdh2	Cadherin 2	0.691787895	13
Pparg	Peroxisome proliferator-activated receptor γ	0.78658078	13
Agtr1a	Angiotensin II receptor, type 1a	-0.7331974	12
Ednra	Endothelin receptor type A	0.637602954	11
Ccl20	Chemokine (C-C motif) ligand 20	0.807308765	10
Itgam	Integrin, α M	-1.252174861	10
Nt5e	5' nucleotidase, ecto	-0.831568237	10

FC, fold change.

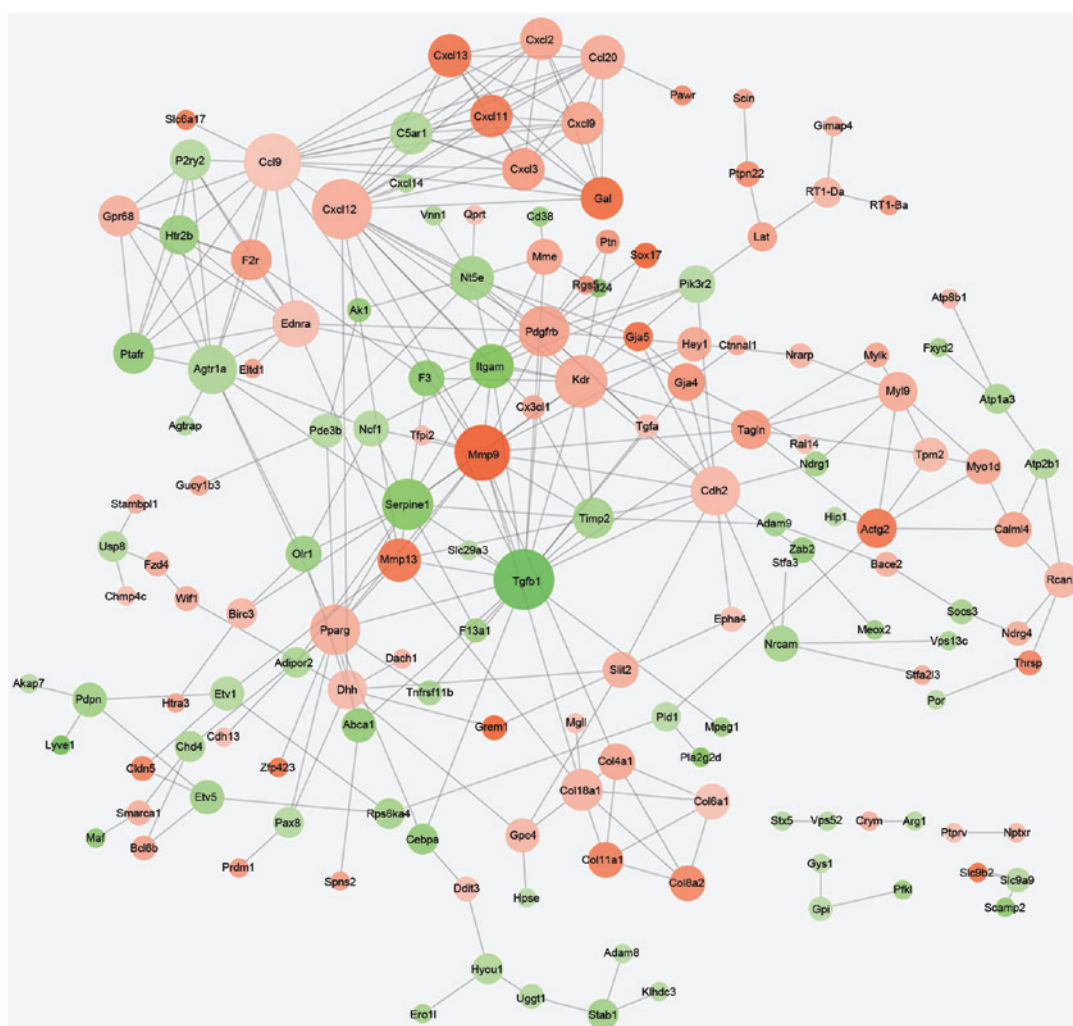


Figure 2. Protein-protein interaction network of differentially expressed genes. Node size reflects node degree where a larger size reflects a larger degree. Node color reflects fold-change values of the gene; red nodes are upregulated and green nodes are downregulated genes. The grey lines represent the interaction between genes.

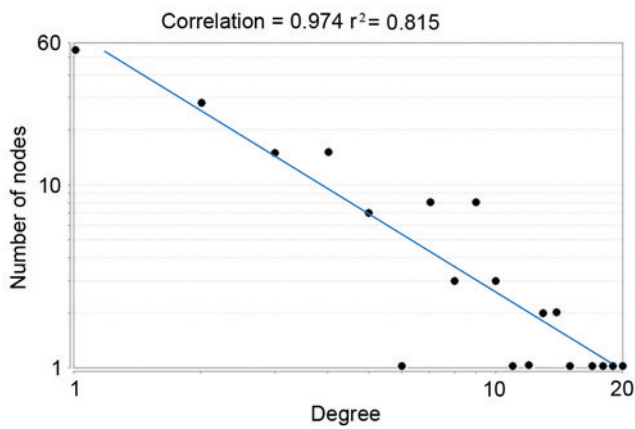


Figure 3. Node degree distribution. The blue line is a fitted power law distribution line. Black data points represent differentially expressed genes.

osteoblasts from mouse calvaria, suggesting that PAI-1 may suppress osteoblast differentiation during the bone repair process. In addition, *serpin1* has been reported to be important in the regulation of fracture callus size, cartilage formation and resorption during bone fracture repair (38). Mao *et al* (24) also demonstrated that PAI-1 may be involved in ECM remodeling and thus be crucial in the bone repair process in patients with diabetes. It may thus be speculated that *serpin1* is important in bone fracture repair. In addition, Mao *et al* (24) also demonstrated that PAI-1 deficiency attenuated diabetic impaired bone repair in patients with diabetes. In the present study, *serpin1* was downregulated in fracture hematoma tissues with rigid fixation when compared with those with semi-rigid fixation, indicating that suppression of *serpin1* may promote bone repair following treatment using rigid fixation.

In conclusion, the observations of the present study indicate that fixation stability may influence the fracture healing process, and that important DEGs in fracture hematoma, including *Cxcl12*, *mmp9*, *Tgfb1* and *serpin1* may be important in this process. The present observations shed new light on the molecular mechanism of fracture healing and have implications for future research. However, the small sample size and lack of experimental validation were limitations in the present study. To further validate the results, it would be prudent to perform the same analysis on a group of young rats and compare the two gene sets for common DEGs upon fixation rigidity in young and old rats.

References

1. Einhorn TA: The cell and molecular biology of fracture healing. *Clin Orthop Relat Res* (355 Suppl): S7-S21, 1998.
2. Dimitriou R, Tsiridis E and Giannoudis PV: Current concepts of molecular aspects of bone healing. *Injury* 36: 1392-1404, 2005.
3. Dimitriou R, Jones E, McGonagle D and Giannoudis PV: Bone regeneration: Current concepts and future directions. *BMC Med* 9: 66, 2011.
4. Ferguson C, Alpern E, Miclau T and Helms JA: Does adult fracture repair recapitulate embryonic skeletal formation? *Mech Dev* 87: 57-66, 1999.
5. Strube P, Sentuerk U, Riha T, Kaspar K, Mueller M, Kasper G, Matziolis G, Duda GN and Perka C: Influence of age and mechanical stability on bone defect healing: Age reverses mechanical effects. *Bone* 42: 758-764, 2008.

6. Mehta M, Strube P, Peters A, Perka C, Hutmacher D, Fratzl P and Duda GN: Influences of age and mechanical stability on volume, microstructure, and mineralization of the fracture callus during bone healing: Is osteoclast activity the key to age-related impaired healing? *Bone* 47: 219-228, 2010.
7. Epari DR, Kassi JP, Schell H and Duda GN: Timely fracture-healing requires optimization of axial fixation stability. *J Bone Joint Surg* 89: 1575-1585, 2007.
8. Ranganathan SI, Ferrari M and Decuzzi P: Design maps for scaffold constructs in bone regeneration. *Biomed Microdevices* 15: 1005-1013, 2013.
9. Kolar P, Schmidt-Bleek K, Schell H, Gaber T, Toben D, Schmidmaier G, Perka C, Buttgerit F and Duda GN: The early fracture hematoma and its potential role in fracture healing. *Tissue Eng Part B Rev* 16: 427-434, 2010.
10. Oe K, Miwa M, Sakai Y, Lee SY, Kuroda R and Kurosaka M: An in vitro study demonstrating that haematomas found at the site of human fractures contain progenitor cells with multilineage capacity. *J Bone Joint Surg Br* 89: 133-138, 2007.
11. Street J, Winter D, Wang JH, Wakai A, McGuinness A and Redmond HP: Is human fracture hematoma inherently angiogenic? *Clin Orthop Relat Res* 378: 224-237, 2000.
12. Beamer B, Hettrich C and Lane J: Vascular endothelial growth factor: An essential component of angiogenesis and fracture healing. *HSS J* 6: 85-94, 2010.
13. Sarahrudi K, Thomas A, Mousavi M, Kaiser G, Kottstorfer J, Kecht M, Hajdu S and Aharinejad S: Elevated transforming growth factor-beta 1 (TGF-β1) levels in human fracture healing. *Injury* 42: 833-837, 2011.
14. Ode A, Duda GN, Geissler S, Pauly S, Ode JE, Perka C and Strube P: Interaction of age and mechanical stability on bone defect healing: An early transcriptional analysis of fracture hematoma in rat. *PLoS One* 9: e106462, 2014.
15. Gautier L, Cope L, Bolstad BM and Irizarry RA: Affy-analysis of Affymetrix GeneChip data at the probe level. *Bioinformatics* 20: 307-315, 2004.
16. Smyth GK: Limma: Linear models for microarray data. In: *Bioinformatics and Computational Biology Solutions using R and Bioconductor*. Gentleman R, Carey VJ, Huber W, Irizarry RA and Dudoit S (eds). Springer, New York, pp397-420, 2005.
17. Wang L, Cao C, Ma Q, Zeng Q, Wang H, Cheng Z, Zhu G, Qi J, Ma H, Nian H and Wang Y: RNA-seq analyses of multiple meristems of soybean: Novel and alternative transcripts, evolutionary and functional implications. *BMC Plant Biol* 14: 169, 2014.
18. Ashburner M, Ball CA, Blake JA, Botstein D, Butler H, Cherry JM, Davis AP, Dolinski K, Dwight SS, Eppig JT, *et al*: Gene ontology: Tool for the unification of biology. *The Gene Ontology Consortium*. *Nat Genet* 25: 25-29, 2000.
19. Maere S, Heymans K and Kuiper M: BiNGO: A Cytoscape plugin to assess overrepresentation of Gene Ontology categories in biological networks. *Bioinformatics* 21: 3448-3449, 2005.
20. Smoot ME, Ono K, Ruscheinski J, Wang PL and Ideker T: Cytoscape 2.8: New features for data integration and network visualization. *Bioinformatics* 27: 431-432, 2011.
21. Benjamini Y and Hochberg Y: Controlling the false discovery rate: A practical and powerful approach to multiple testing. *J R Stat Soc Series B* 57: 289-300, 1995.
22. Franceschini A, Szklarczyk D, Frankild S, Kuhn M, Simonovic M, Roth A, Lin J, Minguez P, Bork P, von Mering C and Jensen LJ: STRING v9. 1: Protein-protein interaction networks, with increased coverage and integration. *Nucleic Acids Res* 41: D808-D815, 2013.
23. Klein P, Schell H, Streitparth F, Heller M, Kassi JP, Kandziora F, Bragulla H, Haas NP and Duda GN: The initial phase of fracture healing is specifically sensitive to mechanical conditions. *J Orthop Res* 21: 662-669, 2003.
24. Mao L, Kawao N, Tamura Y, Okumoto K, Okada K, Yano M, Matsuo O and Kaji H: Plasminogen activator inhibitor-1 is involved in impaired bone repair associated with diabetes in female mice. *PLoS One* 9: e92686, 2014.
25. Galliera E, Corsi M and Banfi G: Platelet rich plasma therapy: Inflammatory molecules involved in tissue healing. *J Biol Regul Homeost Agents* 26 (2 Suppl 1): 35S-42S, 2011.
26. Honczarenko M, Le Y, Swierkowski M, Ghiran I, Glodek AM and Silberstein LE: Human bone marrow stromal cells express a distinct set of biologically functional chemokine receptors. *Stem cells* 24: 1030-1041, 2006.

27. Grassi F, Cristino S, Toneguzzi S, Piacentini A, Facchini A and Lisignoli G: CXCL12 chemokine up-regulates bone resorption and MMP-9 release by human osteoclasts: CXCL12 levels are increased in synovial and bone tissue of rheumatoid arthritis patients. *J Cell Physiol* 199: 244-251, 2004.
28. Pape HC, Marcucio R, Humphrey C, Colnot C, Knobe M and Harvey EJ: Trauma-induced inflammation and fracture healing. *J Orthop Trauma* 24: 522-525, 2010.
29. Wang X, Yu YY, Lieu S, Yang F, Lang J, Lu C, Werb Z, Hu D, Miclau T, Marcucio R and Colnot C: MMP9 regulates the cellular response to inflammation after skeletal injury. *Bone* 52: 111-119, 2013.
30. Tang Y, Wu X, Lei W, Pang L, Wan C, Shi Z, Zhao L, Nagy TR, Peng X, Hu J, *et al*: TGF-beta1-induced migration of bone mesenchymal stem cells couples bone resorption with formation. *Nat Med* 15: 757-765, 2009.
31. Estai MA, Suhaimi F, Das S, Shuid AN, Mohamed Z and Soelaiman IN: Expression of TGF- β 1 in the blood during fracture repair in an estrogen-deficient rat model. *Clinics (Sao Paulo)* 66: 2113-2119, 2011.
32. D'Amelio P, Cristofaro MA, Grimaldi A, Ravazzoli M, Pluviano F, Grosso E, Pescarmona GP and Isaia GC: The role of circulating bone cell precursors in fracture healing. *Calcif Tissue Int* 86: 463-469, 2010.
33. Sandblrg MM, Aro HT and Vuorio EI: Gene expression during bone repair. *Clin Orthop Relat Res*: 292-312, 1993.
34. Vo TN, Kasper FK and Mikos AG: Strategies for controlled delivery of growth factors and cells for bone regeneration. *Adv Drug Deliv Rev* 64: 1292-1309, 2012.
35. Gils A and Declerck PJ: Plasminogen activators inhibitors. In: *Plasminogen: Structure, Activation and Regulation*. Waisman DM (ed). Springer, New York, pp47-66, 2003.
36. Declerck PJ and Gils A: Three decades of research on plasminogen activator inhibitor-1: A multifaceted serpin. *Semin Thromb Hemost* 39: 356-364, 2013.
37. Tamura Y, Kawao N, Okada K, Yano M, Okumoto K, Matsuo O and Kaji H: Plasminogen activator inhibitor-1 is involved in streptozotocin-induced bone loss in female mice. *Diabetes* 62: 3170-3179, 2013.
38. Rundle CH, Wang X, Wergedal JE, Mohan S and Lau KH: Fracture healing in mice deficient in plasminogen activator inhibitor-1. *Calcif Tissue Int* 83: 276-284, 2008.