

CORRIGENDUM

DOI: 10.3892/ijmm.2016.2682

Jumonji AT-rich interactive domain 1B overexpression is associated with the development and progression of glioma

LIPING FANG, JIUHAN ZHAO, DAN WANG, LIYU ZHU, JIAN WANG and KUI JIANG

Int J Mol Med 38: 172-182, 2016; DOI: 10.3892/ijmm.2016.2614

Following the publication of the article, the authors noted that there were certain errors in the data and presentation of some of the parts of the figures. The correct images are shown below:

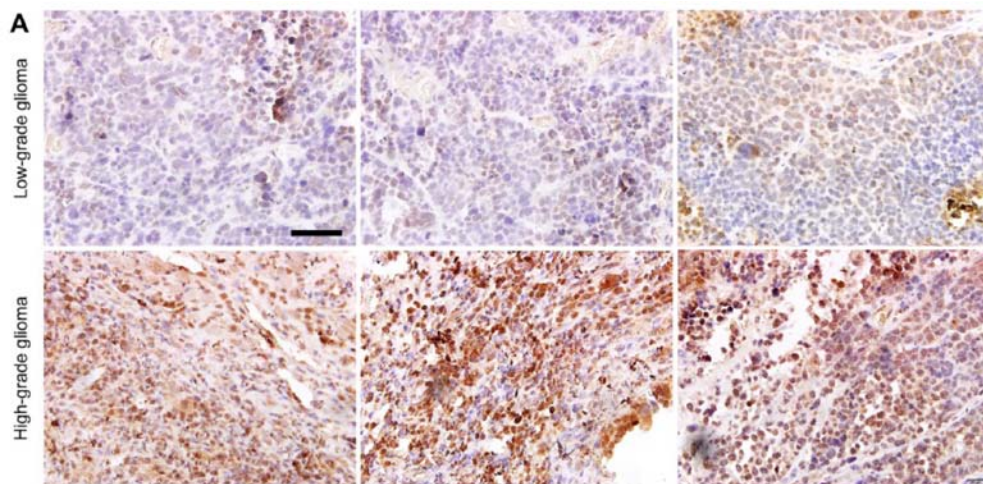


Figure 3A. The correct images are now shown.

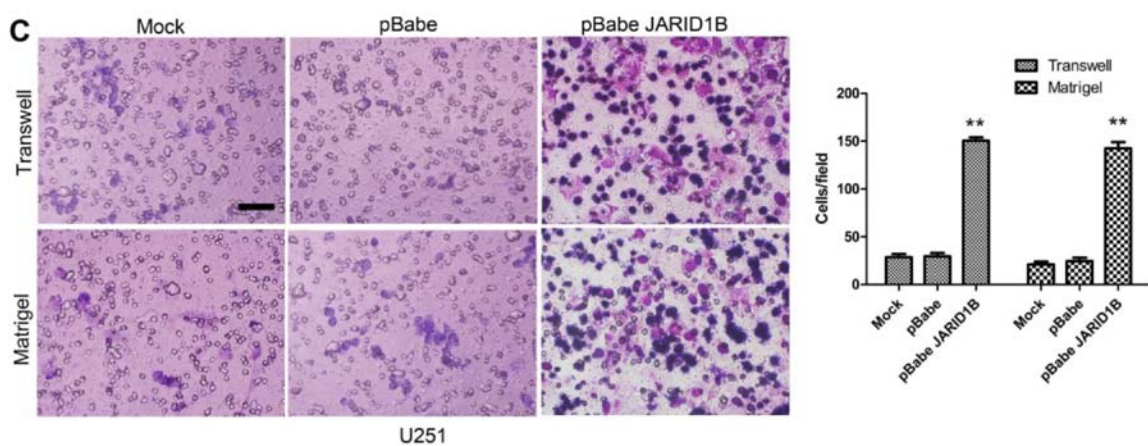


Figure 5C. The correct images are now shown.



Figure 8B. Western blot analysis for the Bmi-1 protein level. The correct blots for Bmi-1 protein are now shown.