

***In vitro* and *in vivo* inhibition of human Fanconi anemia-associated head and neck squamous cell carcinoma by a novel nutrient mixture**

M.W. ROOMI, T. KALINOVSKY, N.W. ROOMI, A. NIEDZWIECKI and M. RATH

Dr Rath Research Institute, Santa Clara, CA 95050, USA

Received July 5, 2012; Accepted August 28, 2012

DOI: 10.3892/ijo.2012.1639

Abstract. Head and neck squamous cell carcinoma (HNSCC) and acute myeloid leukemia are the major causes of mortality and morbidity in Fanconi anemia (FA) patients. The objective of this study was to investigate the antineoplastic activity of a novel antineoplastic nutrient mixture (NM) (containing lysine, proline, ascorbic acid and green tea extract) in human FA-associated HNSCC (FA HNSCC) *in vitro* and *in vivo*. The human FA HNSCC cell line, OHSU-974 (Fanconi Anemia Research Fund), was cultured in RPMI medium supplemented with 20% FBS and antibiotics. At near confluence, cells were treated in triplicate with various concentrations of NM: 0, 50, 100, 250, 500 and 1,000 $\mu\text{g/ml}$. Cells were also treated with phorbol 12-myristate 13-acetate (PMA) to induce matrix metalloproteinase (MMP)-9 activity. Cell proliferation was detected by MTT assay, the secretion of MMPs by gelatinase zymography, cell invasion through Matrigel, cell migration by a scratch test and morphology by hematoxylin and eosin (H&E) staining. *In vivo*, athymic male nude mice (n=12) were inoculated with 3×10^6 OHSU-974 cells subcutaneously and randomly divided into 2 groups: group A was fed a regular diet and group B a regular diet supplemented with 1% NM. Four weeks later, the mice were sacrificed and their tumors were excised, weighed and processed for histological analysis. NM inhibited the growth of OHSU-974 tumors by 47% and tumor burden by 50%. At lower concentrations, NM demonstrated no effect on proliferation, but at 1,000 $\mu\text{g/ml}$ a 40% toxicity was observed. Zymography revealed the MMP-2 and PMA-induced MMP-9 secretion. NM suppressed the secretion of both MMPs in a dose-dependent manner, with a virtual inhibition at 500 $\mu\text{g/ml}$. NM inhibited OHSU-974 cell invasion through Matrigel in a dose-dependent manner with a complete block at 1,000 $\mu\text{g/ml}$. H&E staining showed no morphological changes

below 500 $\mu\text{g/ml}$. These results suggest that NM has potential therapeutic use in the treatment of human FA HNSCC.

Introduction

Head and neck squamous cell carcinomas (HNSCCs), known for their aggressive growth and propensity to metastasize, are among the most common tumors that develop in patients with Fanconi anemia (FA) (1,2). In FA patients, although HNSCC is morphologically the same, its incidence and course are altered. By the age of 40 years, FA patients have a 14% chance of developing HNSCC in contrast to 0.038% in the general population (3). Furthermore, the associated risk factors of tobacco smoking and alcohol consumption that are associated with 85% of the non-FA-associated HNSCC (FA HNSCC) cases do not play as significant a role in FA; approximately 16% of FA HNSCC cases are associated with these risk factors (3). In patients with FA, HNSCC has been shown to be more aggressive with early lymph node metastases and early soft tissue invasion resulting in poorer prognoses than in HNSCC patients without FA (3). Secondary primary tumors occur in 63% of FA patients compared to only 15% in non-FA patients (3). Furthermore, the 2-year overall survival is only 49% in FA patients compared to 70% in non-FA patients (3). The most frequent location of HNSCC is in the oral cavity (65%) compared to the larynx, hypopharynx and oropharynx, each at 10%, which differs from HNSCC in the general population. Due to significant toxic sequelae from the use of radiation therapy and/or chemotherapy in FA patients, surgical treatment is the main modality used. HNSCC in the general population is treated with radiation, chemotherapy and surgery. The highly metastatic potential of HNSCC in FA patients and inadequate treatment methods, leading to poor outcomes, create an urgent need to develop more effective and less toxic treatment alternatives.

We previously developed strategies to inhibit cancer development and its spread using naturally occurring nutrients, such as lysine, proline, ascorbic acid and green tea extract. This nutrient mixture (NM) has exhibited synergistic anticancer activity *in vivo* and *in vitro* in a number of cancer cell lines by inhibiting cancer cell growth, matrix metalloproteinase (MMP) secretion, invasion, metastasis and angiogenesis (4-6). In the present study, we examine the effect of this NM on the human OHSU-974 FA HNSCC cell line *in vivo*, in athymic nude mice

Correspondence to: Dr Aleksandra Niedzwiecki, Dr Rath Research Institute, 1260 Memorex Drive, Santa Clara, CA 95050, USA
E-mail: author@drath.com

Key words: Fanconi anemia, head and neck squamous cell carcinoma, nutrient mixture, tumor growth, matrix metalloproteinases, Matrigel invasion, cell migration

bearing HNSCC xenografts, as well as *in vitro*, evaluating cell viability, MMP secretion, invasion and migration.

Materials and methods

Cancer cell line and culture. The human OHSU-974 FA HNSCC cell line was obtained from the Fanconi Anemia Research Fund, Oregon Health and Science University, Portland, OR, USA. FA HNSCC cells were maintained in RPMI medium supplemented with 20% fetal bovine serum (FBS), 100 U/ml penicillin and 100 µg/ml streptomycin. The media and sera used were obtained from the American Type Culture Collection (ATCC), and the antibiotics (penicillin and streptomycin) were from Gibco-BRL (Long Island, NY, USA).

Composition of the NM. The NM was composed of the following at the indicated ratios: vitamin C (as ascorbic acid and as Mg, Ca, and palmitate ascorbate) 700 mg; L-lysine 1,000 mg; L-proline 750 mg; L-arginine 500 mg; N-acetylcysteine 200 mg; standardized green tea extract [derived from green tea leaves, was obtained from US Pharma Lab Inc. (Santa Clarita, CA, USA); the certificate of analysis indicated the following characteristics: total polyphenol 80%, catechins 60%, epigallocatechin gallate (EGCG) 35% and caffeine 1.0%] 1,000 mg; selenium 30 µg; copper 2 mg; and manganese 1 mg.

In vivo studies

Animals. Male athymic mice (NCR-nu/nu), approximately 5 weeks of age on arrival, were purchased from Simonsen Laboratories (Gilroy, CA, USA) and maintained in microisolator cages under pathogen-free conditions on a 12-h light/12-h dark schedule for a week. All procedures were performed according to humane and customary care and use of experimental animals and followed a protocol approved by the internal institutional animal safety review committee of our institution.

Experimental design. After housing for a week, the mice (n=12) were inoculated subcutaneously with 3×10^6 OHSU-974 cells in 0.2 ml phosphate-buffered saline (PBS) and 0.1 ml Matrigel (BD Bioscience, Bedford, MA, USA). After injection, the mice were randomly divided into 2 groups; group A mice were fed regular Purina mouse chow and group B the regular diet supplemented with 1% NM (w/w). The regular diet was Laboratory Rodent Diet 5001 from Purina Mills (Gray Summit, MO, USA) LLC/Test Diet. The 1% NM diet was milled and pressed by Purina Mills, LLC and generated by Vitatech (Tustin, CA, USA). During the study, the mice consumed, on average, 4 g of their respective diets per day. Thus, the supplemented mice received approximately 40 mg of NM per day. After 4 weeks, the mice were sacrificed and their tumors were excised and processed for histological analysis. Dimensions (length and width) of tumors were measured using a digital caliper, and the tumor burden was calculated using the following formula: $0.5 \times \text{length} \times \text{width}$. The mean weight of the mice at the initiation and termination of the study did not differ significantly between the groups.

Histological analysis. Tissue samples were fixed in 10% buffered formalin. All tissues were embedded in paraffin and cut at 4-5 microns thick. Sections were deparaffinized through

xylene and graduated alcohol series to water and stained with hematoxylin and eosin (H&E) for evaluation using a standard light microscope.

In vitro studies

Cell culture. The human OHSU-974 HNSCC cells were grown in RPMI, supplemented with 20% FBS, penicillin (100 U/ml) and streptomycin (100 mg/ml) in 24-well tissue culture plates (Costar, Cambridge, MA, USA). Cells were incubated in 1 ml of medium at 37°C in a tissue culture incubator equilibrated with 95% air and 5% CO₂. At near confluence, the cells were treated with the NM, dissolved in medium and examined at 0, 50, 100, 250, 500, and 1,000 µg/ml in triplicate at each dose. Phorbol 12-myristate 13-acetate (PMA), 100 ng/ml was added to cells to induce MMP-9 secretion. The plates were then returned to the incubator.

MTT assay. Cell viability was evaluated by [3-(4,5-dimethylthiazol-2-yl) 2,5-diphenyl tetrazolium bromide] (MTT) assay, a colorimetric assay based on the ability of viable cells to reduce a soluble yellow tetrazolium salt MTT to a blue formazan crystal by mitochondrial succinate dehydrogenase activity of viable cells. This test is a good index of mitochondrial activity and thus of cell viability. After 24 h of incubation, the cells were washed with PBS and 500 µl of MTT (Sigma #M-2128) 0.5 mg/ml in medium was added to each well. After the addition of MTT (0.5 mg/ml) the plates were covered and returned to the 37°C incubator for 2 h, the optimal time for formazan product formation. Following incubation, the supernatant was carefully removed from the wells, the formazan product was dissolved in 1 ml dimethylsulphoxide (DMSO), and absorbance was measured at 570 nm in a BioSpec 1601, Shimadzu spectrometer. The OD₅₇₀ of the DMSO solution in each well was considered to be proportional to the number of cells. The OD₅₇₀ of the control (treatment without supplement) was considered 100%.

Gelatinase zymography. Gelatinase zymography was performed in 10% Novex Pre-Cast SDS polyacrylamide gel (Invitrogen) in the presence of 0.1% gelatin under non-reducing conditions. The culture media (20 µl) were mixed with sample buffer and loaded for SDS-PAGE with Tris-glycine-SDS buffer, as suggested by the manufacturer (Novex). Samples were not boiled prior to electrophoresis. Following electrophoresis, the gels were washed twice in 2.5% Triton X-100 for 30 min at room temperature to remove SDS. The gels were then incubated at 37°C overnight in substrate buffer containing 50 mM Tris-HCl and 10 mM CaCl₂ at pH 8.0 and stained with 0.5% Coomassie Blue R250 in 50% methanol and 10% glacial acetic acid for 30 min and destained. Upon renaturation of the enzyme, the gelatinases digested the gelatin in the gel, producing clear bands against an intensely stained background. Protein standards were run concurrently and approximate molecular weights were determined by plotting the relative mobilities of known proteins.

Matrigel invasion. Invasion experiments were conducted using Matrigel (Becton-Dickinson) inserts in 24-well plates. Suspended in medium, OHSU-974 cells were supplemented with nutrients, as specified in the design of the experiment and seeded on the insert in the well. Thus both the medium on the insert and in the well contained the same supplements. The plates with the inserts were then incubated in a culture incubator equilibrated

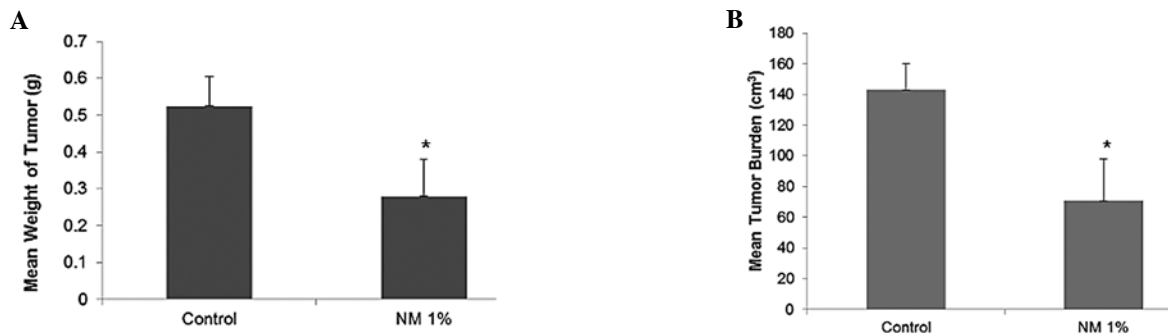


Figure 1. (A) Effect of 1% NM dietary supplementation on mean tumor weight of OHSU-974 xenografts in male nude mice injected with 3×10^6 OHSU-974 cells (* $p=0.005$ with respect to control). (B) Effect of 1% NM dietary supplementation on tumor burden of OHSU-974 xenografts in male nude mice (* $p=0.005$ with respect to control).

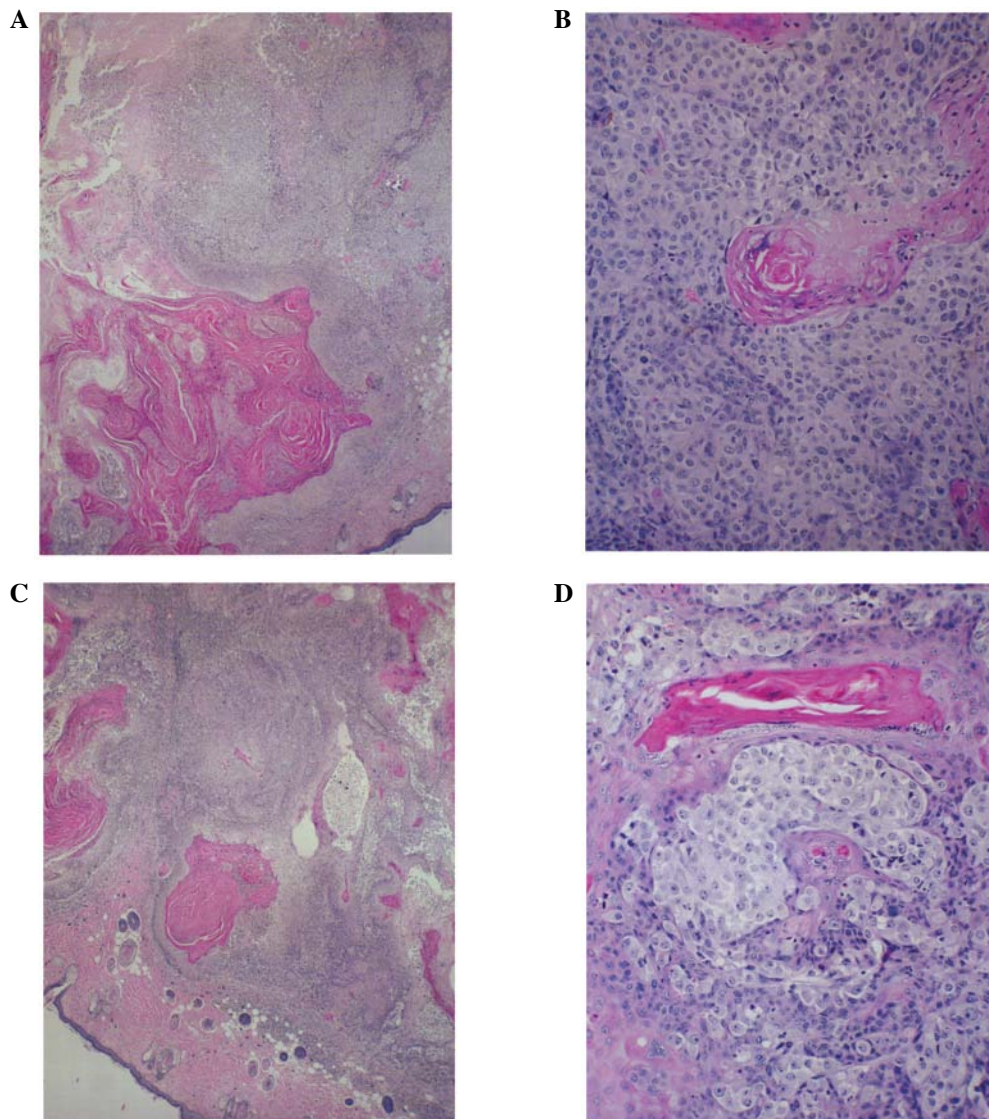


Figure 2. Histopathology of tumors. Representative tumors from (A) control, x40; (B) control, x200 and 1% NM-supplemented mice; (C) 1% NM, x40; (D) 1% NM, x200.

with 95% air and 5% CO_2 for 24 h. After incubation, the medium was withdrawn from the wells. The cells on the upper surface of the inserts were gently scrubbed away with cotton swabs. The cells that had penetrated the Matrigel membrane and migrated

onto the lower surface of the Matrigel were stained with H&E and visually counted under a microscope.

Cell migration: scratch test. To examine cell migration, a 2-mm wide single uninterrupted scratch was made from the

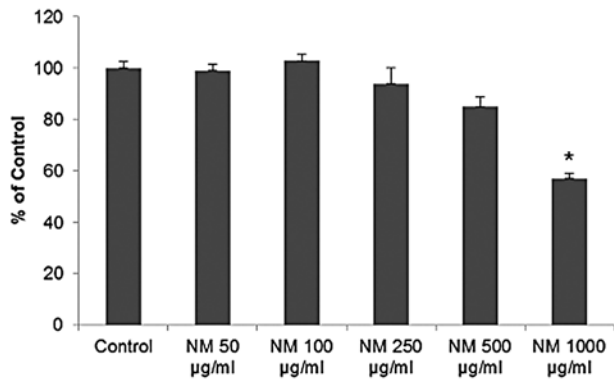


Figure 3. Effect of NM on viability of OHSU-974 cells, MTT 24 h (*significance of at least $p=0.005$ with respect to control).

top to bottom of culture plates of OHSU-947 cells grown to confluence. Culture plates were washed with PBS and incubated with NM in medium and examined at 0, 50, 100, 250 and 500 $\mu\text{g/ml}$, in triplicate at each dose for 24 h. Cells were washed with PBS, fixed and stained with H&E and photomicrographs were obtained.

Morphology: H&E. The morphology of the cells cultured for 24 h in the test concentrations of NM was evaluated by H&E staining and observed and photographed under a microscope.

Statistical analysis. The results are expressed as the means \pm SD. Data were analyzed by an independent sample t-test. Pearson's correlation co-efficients were determined for toxicity and invasion correlations to the NM concentration using MedCalc software (Mariakerke, Belgium).

Results

In vivo studies

Tumor growth and burden. NM strongly inhibited the growth of OHSU-974 xenografts in nude mice. Mean tumor weight was inhibited by 47% ($p=0.0009$) with NM 1% dietary supplementation, as shown in Fig. 1A and tumor burden was inhibited by 50% ($p=0.0003$), as shown in Fig. 1B.

Histological analysis. Histologically, the tumors from both groups were composed of solid nests of large, irregularly round, ulcerated, skin subcutaneous masses, consistent with squamous cell carcinoma. Tumors from the control and NM-supplemented mice were similar morphologically, although the tumors from the NM-supplemented mice were significantly smaller in size (Fig. 2).

In vitro studies

Cytotoxicity. NM exhibited no significant toxicity to OHSU-974 HNSCC cells *in vitro* at lower concentrations. However, a cytotoxicity of 15 ($p=0.005$) and 40% ($p<0.001$) at 500 and 1,000 $\mu\text{g/ml}$ was observed, respectively, compared to the control, as shown in Fig. 3.

Gelatinase zymography. Gelatinase zymography demonstrated MMP-2 and MMP-9 secretion by normal and PMA-treated OHSU-947 cells. NM inhibited the secretion of both MMPs in a dose-dependent manner with virtual total inhibition of MMP-9 and MMP-2 at 500 $\mu\text{g/ml}$, as shown in Fig. 4. MMP-2 secretion by normal OHSU-947 cells was inhibited by 75% at 250 $\mu\text{g/ml}$ NM and by 100% at 500 $\mu\text{g/ml}$ and 1,000 $\mu\text{g/ml}$ NM (linear trend, $R^2=0.6863$) and the secretion of MMP-2 by PMA-treated cells was inhibited by 50% at 100 $\mu\text{g/ml}$ NM, 99% by 250 $\mu\text{g/ml}$ NM and by 100% at 500 $\mu\text{g/ml}$ and 1,000 $\mu\text{g/ml}$ NM (linear trend, $R^2=0.7578$).

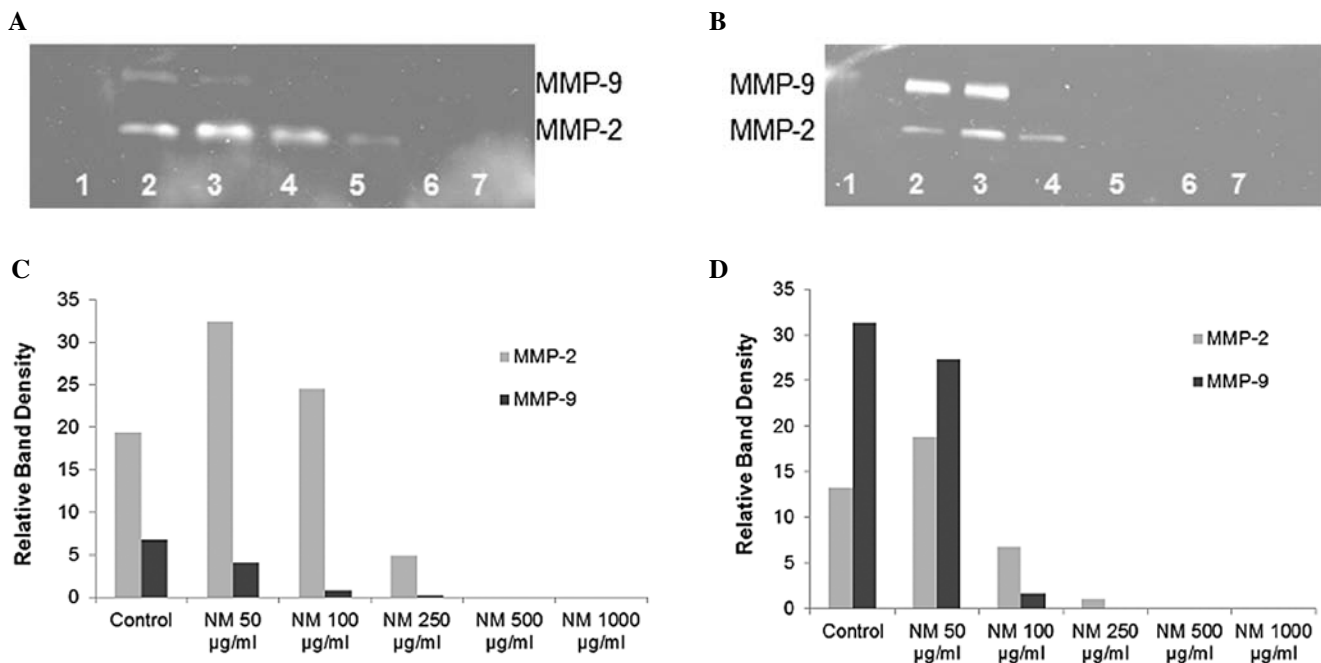


Figure 4. Effect of NM on MMP-2 and MMP-9 secretion in (A) normal OHSU-974 cells (B) PMA (100 ng/ml)-treated OHSU-974 cells. Lane 1, markers; lane 2, control; lanes 3-7, NM 50, 100, 250, 500 and 1,000 $\mu\text{g/ml}$, respectively. Densitometry analysis of (C) uninduced and (D) PMA-treated OHSU-974 cells.

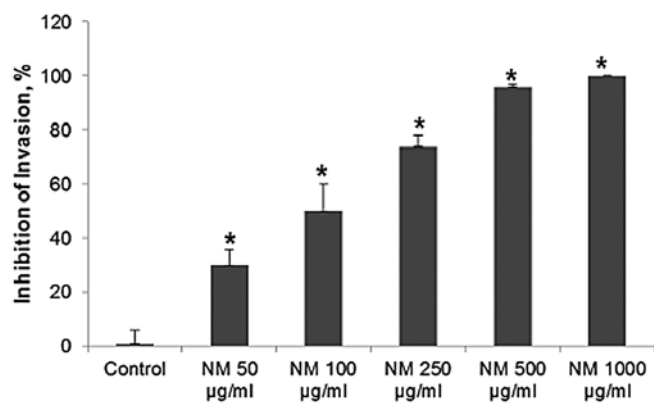


Figure 5. Effect of NM on Matrigel invasion of OHSU-974 cells (*significance of at least $p=0.001$ with respect to control).

MMP-9 secretion by normal OHSU-947 cells was inhibited by 88% at 100 $\mu\text{g/ml}$ NM, 96% by 250 $\mu\text{g/ml}$ NM and by 100% at 500 $\mu\text{g/ml}$ and 1,000 $\mu\text{g/ml}$ NM (linear trend, $R^2=0.7898$) and the secretion of PMA-treated cells was inhibited by 95% at 100 $\mu\text{g/ml}$ NM and by 100% at 250, 500 and 1,000 $\mu\text{g/ml}$ NM (linear trend, $R^2=0.7324$).

Matrigel invasion. NM significantly inhibited OHSU-974 cell invasion through Matrigel in a dose-dependent manner, with 30% ($p=0.003$) inhibition at 50 $\mu\text{g/ml}$, 50% ($p=0.002$) at 100 $\mu\text{g/ml}$, 74% ($p<0.0001$) at 250 $\mu\text{g/ml}$, 96% ($p<0.0001$) at 500 $\mu\text{g/ml}$ and 100% ($p<0.0001$) at 1,000 $\mu\text{g/ml}$, as shown in Figs. 5 and 6. There was a significant negative correlation between the NM concentration and the number of OHSU-974 cells that had invaded/migrated through Matrigel ($r=-0.9715$, $p<0.0001$).

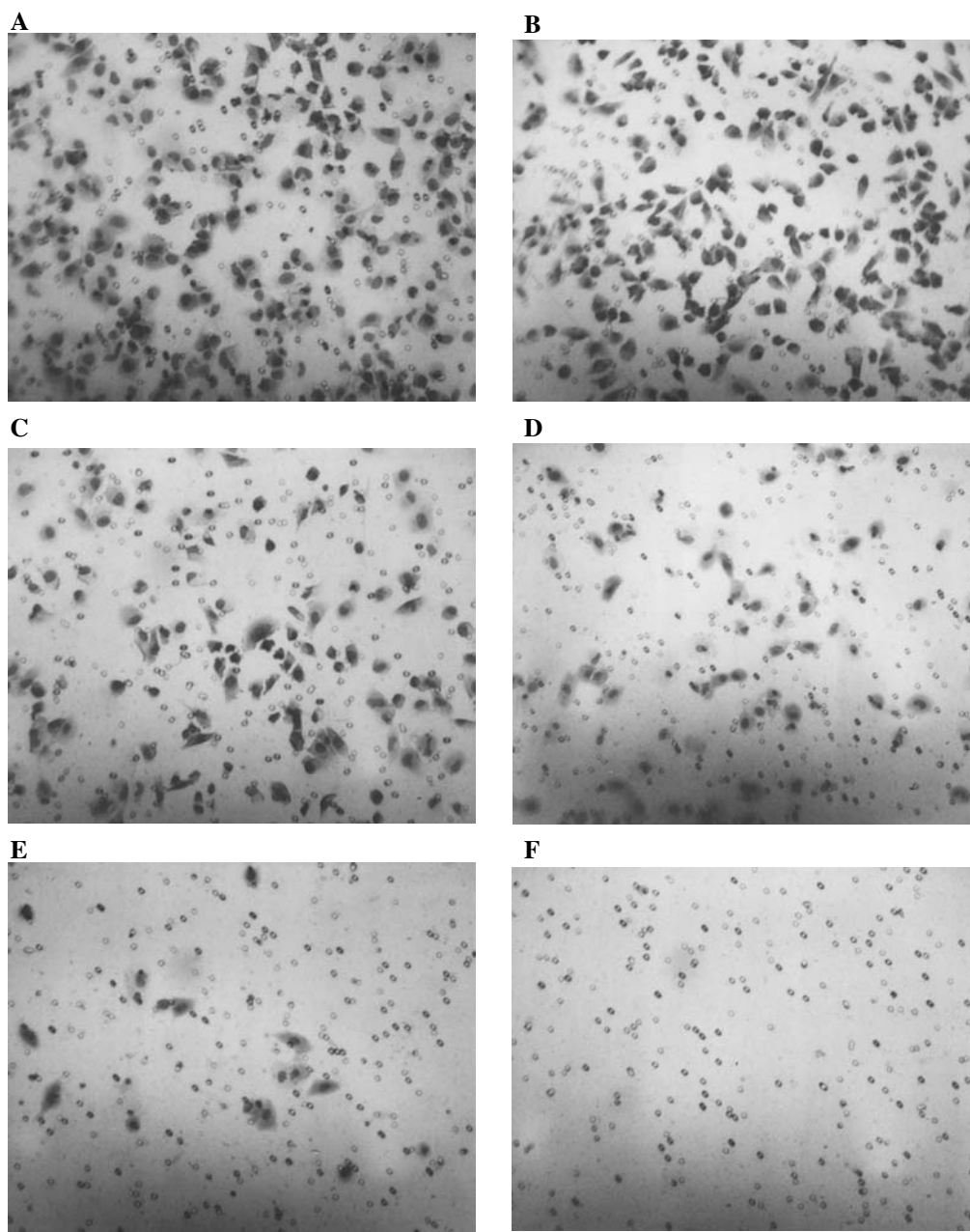


Figure 6. Effect of NM on Matrigel invasion: photomicrographs of (A) control, (B) 50 $\mu\text{g/ml}$ NM, (C) 100 $\mu\text{g/ml}$ NM, (D) 250 $\mu\text{g/ml}$ NM, (E) 500 $\mu\text{g/ml}$ NM, and (F) 1,000 $\mu\text{g/ml}$ NM.

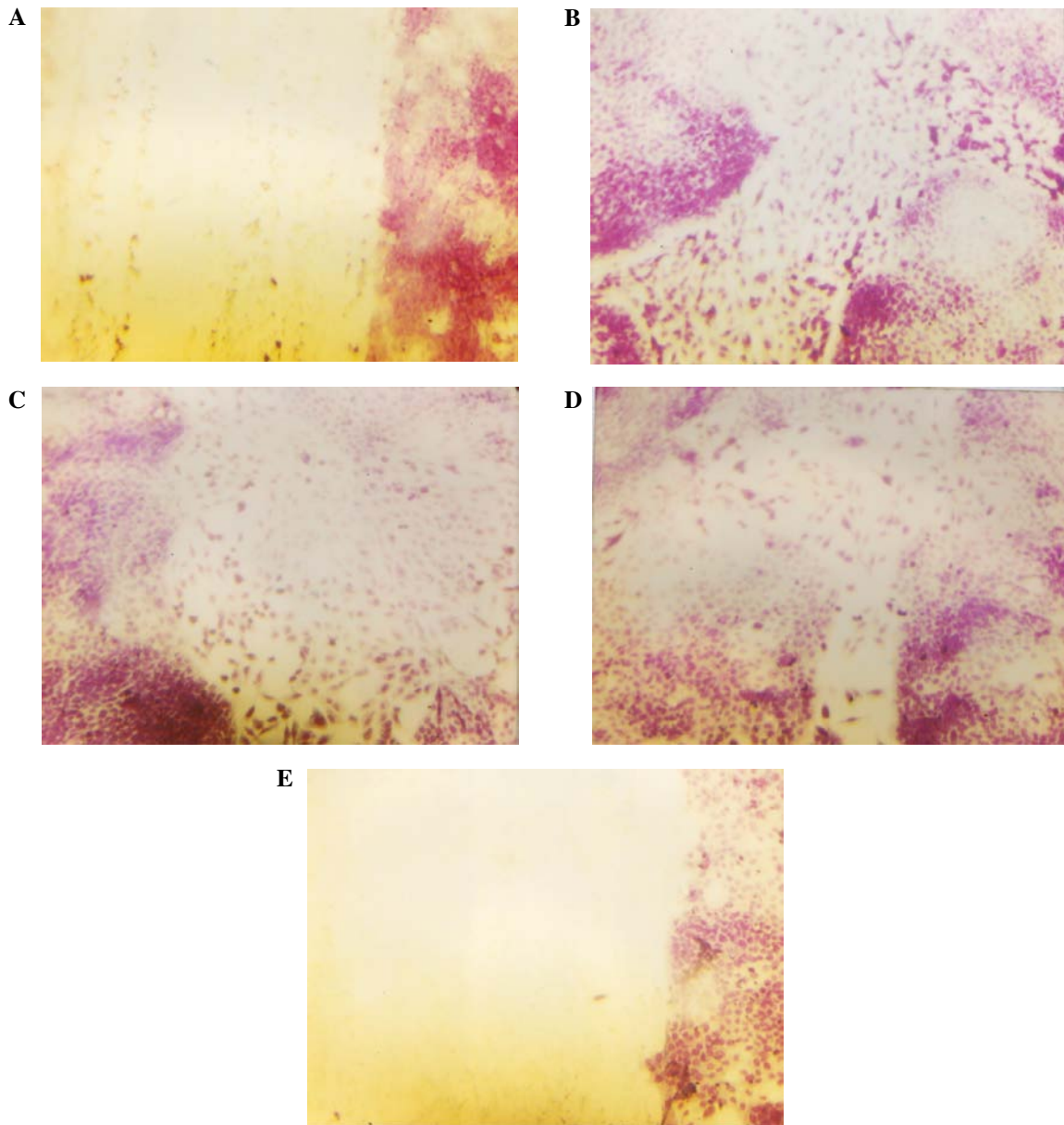


Figure 7. Effect of NM on migration: scratch test showing (A) control, 0 h; (B) control, 24 h; (C) 50 $\mu\text{g/ml}$ NM, 24 h; (D) 100 $\mu\text{g/ml}$ NM, 24 h; and (E) 250 $\mu\text{g/ml}$ NM, 24 h.

Cell migration: scratch test. NM reduced cell migration in a dose-dependent manner, with a complete block of OHSU-974 cells at 250 $\mu\text{g/ml}$. Photomicrographs of the results from the scratch tests of OHSU-974 cells are shown in Fig. 7.

Morphology: H&E staining. No morphological changes were observed following H&E staining below 500 $\mu\text{g/ml}$, as shown in Fig. 8.

Discussion

The results of the *in vivo* study of human HNSCC xenografts in immune impaired (athymic) nude mice demonstrated a significant suppression of HNSCC OHSU-974 tumor growth (47% inhibition of mean tumor weight and 50% inhibition of mean tumor burden with 1% NM dietary supplementation). The results from the cellular proliferation study support the *in vivo* findings, as NM showed an increased toxicity in OHSU-974

cells in a dose-dependent manner, with 40% inhibition of cell growth exposed to 1,000 $\mu\text{g/ml}$ NM.

Growing tumors become hypoxic and acidotic beyond the size of 2 mm and secrete several growth factors to stimulate local angiogenesis. In a previous study, we demonstrated that NM significantly ($p < 0.05$) reduced bFGF-induced angiogenesis [utilizing a chorioallantoic membrane (CAM) assay in chick embryos], and decreased the human U2OS osteosarcoma cell expression of VEGF, angiopoietin-2, bFGF, PDGF and TGF β -1 (4).

The invasion of host tissues is dependent on tumor cell adhesion, cell migration and the proteolytic degradation of the extracellular matrix (ECM) by MMPs (7). MMPs, particularly MMP-2 and MMP-9, are prognostic markers for survival and metastatic potential in head and neck squamous carcinomas. In an examination of genolytic activity in human oral squamous cell carcinoma tissues, Kawamata *et al* (8) observed increased

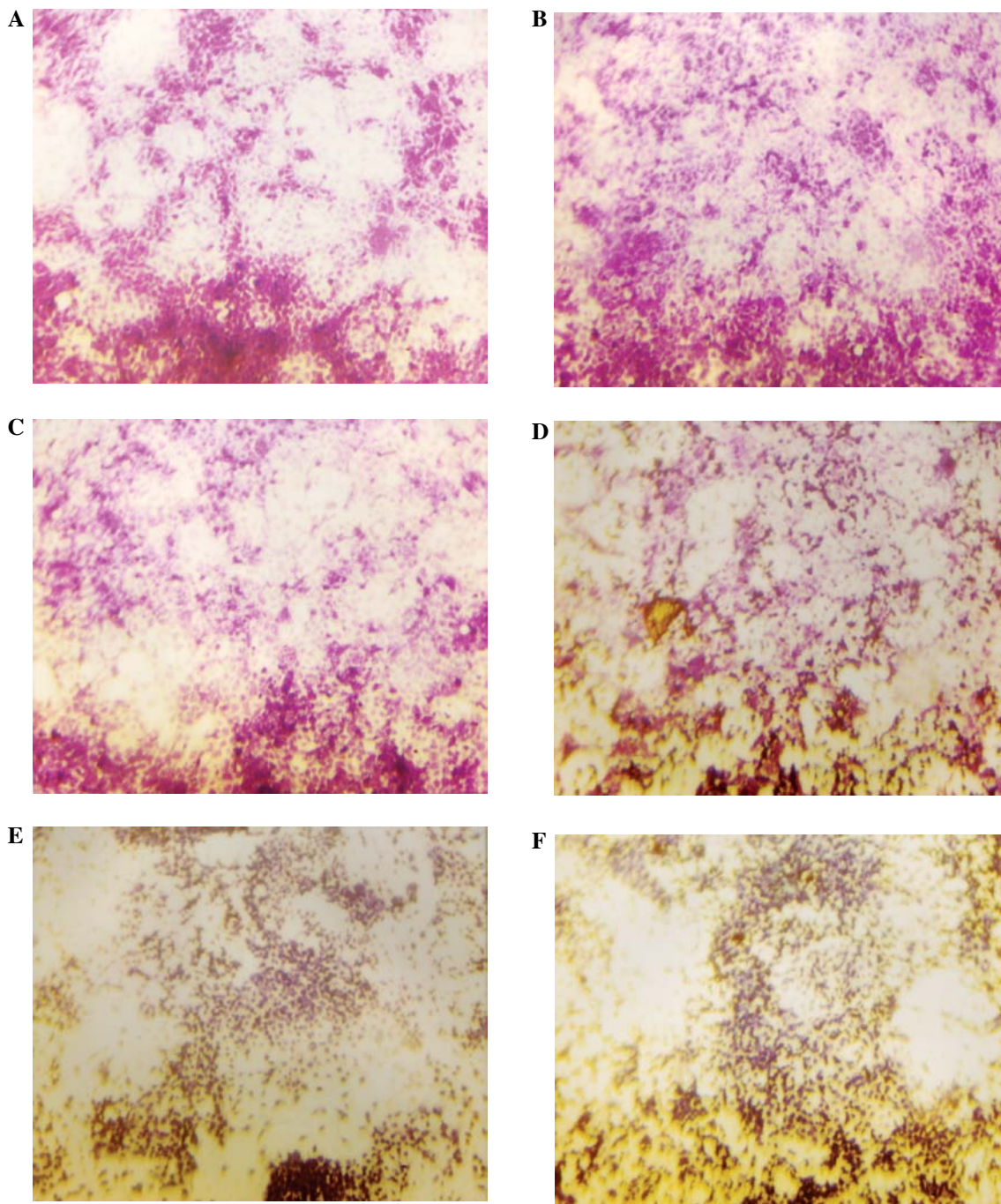


Figure 8. Effect of NM on morphology of OHSU-974 cells: H&E staining of (A) control, (B) 50 $\mu\text{g/ml}$ NM, (C) 100 $\mu\text{g/ml}$ NM, (D) 250 $\mu\text{g/ml}$ NM, (E) 500 $\mu\text{g/ml}$ NM, and (F) 1,000 $\mu\text{g/ml}$ NM.

activity of pro-MMP-9 and active MMP-2 in cancer cell nests compared with normal surrounding gingival tissue and significantly higher MMP-2 activity in metastatic cancer cell nests. Patel *et al* (9) reported a significant elevation of latent, active and total forms of MMP-2 and MMP-9 in malignant tissue compared with adjacent normal tissues in oral cancer patients. In addition, MMP-2 correlated with lymph node metastatic development (9). In an examination of a group of patients with early stage oral squamous cell carcinoma, Katayama *et al* (10) found that patients who developed regional lymph node and/or distant metastasis showed significantly increased MMP-9 and TIMP metalloproteinase inhibitor-2 (TIMP-2) expression compared to patients without any tumor metastasis. In addition,

the expression of MMP-9 and TIMP-2 correlated with worst cause-specific survival. Reidel *et al* (11) found that MMP-9 expression in patients with HNSCC correlated with poor survival, high VEGF expression and higher mean vessel density compared to MMP-9-negative tumors, suggesting that MMP-9 functions as a regulator of tumor angiogenesis supporting endothelial cell invasion in human head and neck cancer. Kurahara *et al* (12) demonstrated a significant decrease in ECM staining (indicating loss of ECM) in invasive and metastatic cases of oral squamous cell carcinoma with increased expression of MMP-1, MMP-2 and MMP-9.

The results from our *in vitro* study of OSH-947 HNSCC cells demonstrated a potent, significant suppression of invasive

parameters by the NM. NM inhibited MMP-2 and MMP-9 secretion with a complete block of both at 500 $\mu\text{g/ml}$ and 100% inhibition of invasion of cells through Matrigel at 1,000 $\mu\text{g/ml}$. The migration of cells using a scratch test showed total block at 250 $\mu\text{g/ml}$ NM. In a previous study of HNSCC FaDu cells, NM was found to inhibit xenograft tumor growth and invasive parameters (13).

NM was formulated by defining critical physiological targets in cancer progression and metastasis, such as ECM integrity and MMP activity. Adequate supplies of ascorbic acid and the amino acids, lysine and proline, ensure proper synthesis and hydroxylation of collagen fibers for optimal ECM structure. Manganese and copper are also essential for collagen formation. Lysine, a natural inhibitor of plasmin-induced proteolysis, plays an important role in ECM stability (14,15). Green tea extract has been shown to modulate cancer cell growth, metastasis, angiogenesis and other aspects of cancer progression (16-20). N-acetylcysteine has been shown to modulate MMP-9 and the invasive activities of tumor cells (21,22). Selenium has been shown to inhibit MMP secretion, tumor invasion, and the migration of endothelial cells through the ECM (23). Ascorbic acid demonstrates cytotoxic and antimetastatic effects on malignant cell lines (25-28) and cancer patients have been found to have low levels of ascorbic acid (29,30). Low levels of arginine, a precursor of nitric oxide (NO), can limit the production of NO, which has been shown to predominantly act as an inducer of apoptosis (31).

Current treatment methods available for FA-associated cancers are generally ineffective and particularly toxic to these patients. Thus, there is a need for development of effective therapeutic agents for these cancers with minimal toxicity. In this study, our results demonstrated that NM significantly inhibited the growth and tumor burden of the OHSU-974 FA HNSCC cell line *in vivo*. In addition, invasive parameters, such as OHSU-974 cell line MMP-2 and -9 secretion and invasion were significantly inhibited by NM *in vitro*. These findings suggest the potential use of NM in the treatment of FA HNSCC. Furthermore, in contrast to the toxic side-effects of current chemotherapy, the NM has been shown to be a safe therapeutic agent. In a previous *in vivo* study addressing safety issues, we found that gavaging adult female ODS rats (weighing 250-300 g) with the NM (at 30, 90 or 150 mg per day for 7 days), had no adverse effects on vital organs (heart, liver and kidney), and on associated functional serum enzymes, indicating that this mixture is safe to use even at these high doses, which far exceed the normal equivalent dosage of the nutrient (32).

Acknowledgements

The present study was funded by the Dr Rath Health Foundation (Santa Clara, CA, USA), a non-profit organization. Consulting pathologist Dr Alexander de Paoli, IDEXX Reference Laboratories, provided the histopathological slides of the OHSU-974 HNSCC tumors.

References

- Alter BP, Greene MH, Velasquez I and Rosenberg PS: Cancer in Fanconi anemia. *Blood* 101: 2072-2073, 2003.
- Kutler DI, Auerbach AD, Satagopan JH, *et al*: High incidence of head and neck squamous cell carcinoma in patients with Fanconi anemia. *Arch Otolaryngol Head Neck Surg* 129: 106-112, 2003.
- Singh B: Head and neck squamous carcinoma in Fanconi anemia patients. In: *Fanconi Anemia: Guidelines for Diagnosis and Management*. Eiler ME, Fohnmayer D, Forhnmayr L, Larsen K and Owen J (eds). 3rd edition. Fanconi Anemia Research Fund, Inc., Eugene, OR, pp250-263, 2008.
- Roomi MW, Roomi N, Ivanov V, Kalinovsky T, Niedzwiecki A and Rath M: Inhibitory effect of a mixture containing ascorbic acid, lysine, proline and green tea extract on critical parameters in angiogenesis. *Oncol Rep* 14: 807-815, 2005.
- Roomi MW, Ivanov V, Kalinovsky T, Niedzwiecki A and Rath M: Inhibition of pulmonary metastasis of melanoma B16FO cells in C57BL/6 mice by a nutrient mixture consisting of ascorbic acid, lysine, proline, arginine, and green tea extract. *Exp Lung Res* 32: 517-530, 2006.
- Niedzwiecki A, Roomi MW, Kalinovsky T and Rath M: Micronutrient synergy - a new tool in effective control of metastasis and other key mechanisms of cancer. *Cancer Metastasis Rev* 29: 529-543, 2010.
- Duffy MJ: The role of proteolytic enzymes in cancer invasion and metastasis. *Clin Exp Metastasis* 10: 145-155, 1992.
- Kawamata H, Uchida D, Hamano H, Kimura-Yanagawa T, Nakashiro KI, Hino S, Omotehara F, Yoshida H and Sato M: Active MMP-2 in cancer cell nests of oral cancer patients: Correlation with lymph node metastasis. *Int J Oncol* 13: 699-704, 1998.
- Patel BP, Shah SV, Shukla SN, Shab PM and Patel PS: Clinical significance of MMP-2 and MMP-9 in patients with oral cancer. *Head Neck* 29: 564-572, 2007.
- Katayama A, Bandoh N, Kishibe K, Takahara M, Ogino T, Nonaka S and Harabuchi Y: Expression of matrix metalloproteinases in early-stage oral squamous cell carcinoma as predictive indicators of tumor metastases and prognosis. *Clin Cancer Res* 10: 634-640, 2004.
- Reidel F, Götte K, Schwalb J, Bergler W and Hörmann K: Expression of 92-kDa type IV collagenase correlates with angiogenic markers and poor survival in head and neck squamous cell carcinoma. *Int J Oncol* 17: 1099-1105, 2000.
- Kurahara S, Shinohara M, Ikebe T, Nakamura S, Beppu M, Hiraki A, Takeuchi H and Shirasuna K: Expression of MMPs, MT-MMP, and TIMPs in squamous cell carcinoma of the oral cavity: correlation with tumor invasion and metastasis. *Head Neck* 21: 627-638, 1999.
- Roomi MW, Roomi N, Kalinovsky T, Rath M and Niedzwiecki A: Marked inhibition of growth and invasive parameters of head and neck squamous carcinoma FaDu by a nutrient mixture. *Integr Cancer Ther* 8: 168-176, 2009.
- Rath M and Pauling L: Plasmin-induced proteolysis and the role of apoprotein(a), lysine and synthetic analogs. *Orthomolecular Med* 7: 17-23, 1992.
- Sun Z, Chen YH, Wang P, Zhang J, Gurewich V, Zhang P and Liu JN: The blockage of high-affinity lysine binding sites of plasminogen by EACA significantly inhibits pro-urokinase-induced plasminogen activation. *Biochem Biophys Acta* 1596: 182-192, 2002.
- Valcic S, Timmermann BN, Alberts DS, Wachter GA, Krutzsch M, Wymer J and Guillen JM: Inhibitory effect of six green tea catechins and caffeine on the growth of four selected human tumor cell lines. *Anticancer Drugs* 7: 461-468, 1996.
- Mukhtar H and Ahmed N: Tea polyphenols: prevention of cancer and optimizing health. *Am J Clin Nutr* 71: 1698S-1702S, 2000.
- Yang GY, Liao J, Kim K, Yurtow EJ and Yang CS: Inhibition of growth and induction of apoptosis in human cancer cell lines by tea polyphenols. *Carcinogenesis* 19: 611-616, 1998.
- Taniguchi S, Fujiki H, Kobayashi H, Go H, Miyado K, Sadano H and Shimikawa R: Effect of (-)-epigallocatechin gallate, the main constituent of green tea, on lung metastasis with mouse B16 melanoma cell lines. *Cancer Lett* 65: 51-54, 1992.
- Hara Y: *Green tea: Health Benefits and Applications*. Marcel Dekker, New York, 2001.
- Kawakami S, Kageyama Y, Fujii Y, Kihara K and Oshima H: Inhibitory effects of N-acetylcysteine on invasion and MMP-9 production of T24 human bladder cancer cells. *Anticancer Res* 21: 213-219, 2001.
- Morini M, Cai T, Aluigi MG, Noonan DM, Masiello L, De Floro S, D'Agostinin F, Albini A and Fassina G: The role of the thiol N-acetylcysteine in the prevention of tumor invasion and angiogenesis. *Int J Biol Markers* 14: 268-271, 1999.

23. Yoon SO, Kim MM and Chung AS: Inhibitory effects of selenite on invasion of HT1080 tumor cells. *J Biol Chem* 276: 20085-20092, 2001.
24. Maramag C, Menon M, Balaji KC, Reddy PG and Laxmanan S: Effect of vitamin C on prostate cancer cells in vitro: effect on cell number, viability and DNA synthesis. *Prostate* 32: 188-195, 1997.
25. Naidu KA, Karl RC and Coppola D: Antiproliferative and proapoptotic effect of ascorbyl stearate in human pancreatic cancer cells: association with decreased expression of insulin-like growth factor 1 receptor. *Dig Dis Sci* 48: 230-237, 2003.
26. Koh WS, Lee SJ, Lee H, Park C, Park MH, Kim WS, Yoon SS, Park K, Hong SI, Chung MH and Park CH: Differential effects and transport kinetics of ascorbate derivatives in leukemic cell lines. *Anticancer Res* 8: 2487-2493, 1998.
27. Chen Q, Espey MG, Krishna MC, Mitchell JB, Corpe CP, Buettner GR, Shacter E and Levine M: Pharmacologic ascorbic acid concentrations selectively kill cancer cells: Action as a pro-drug to deliver hydrogen peroxide to tissues. *Proc Natl Acad Sci USA* 102: 13604-13609, 2005.
28. Kurbacher CM, Wagner U, Kolster B, Andreotti PE, Krebs D and Bruckner HW: Ascorbic acid (vitamin C) improves the antineoplastic activity of doxorubicin, cisplatin and paclitaxel in human breast carcinoma cells in vitro. *Cancer Lett* 103: 183-189, 1996.
29. Anthony HM and Schorah CJ: Severe hypovitaminosis C in lung-cancer patients: The utilization of vitamin C in surgical repair and lymphocyte-related host resistance. *Br J Cancer* 46: 354-367, 1982.
30. Núñez Martín C and Ortiz de Apodaca y Ruiz A: Ascorbic acid in the plasma and blood cells of women with breast cancer. The effect of consumption of food with an elevated content of this vitamin. *Nutr Hosp* 10: 368-372, 1995 (In Spanish).
31. Cooke JP and Dzau VJ: Nitric oxide synthase: Role in the genesis of vascular disease. *Annu Rev Med* 48: 489-509, 1997.
32. Roomi MW, Ivanov V, Netke SP, Niedzwiecki A and Rath M: Serum markers of the liver, heart, and kidney and lipid profile and histopathology in ODS rats treated with nutrient synergy. *J AM Coll Nutr* 22: 477, abs. 86, 2003.