

CORRIGENDUM

DOI: 10.3892/ijo.2019.4871

USP22 promotes the G1/S phase transition by upregulating FoxM1 expression via β -catenin nuclear localization and is associated with poor prognosis in stage II pancreatic ductal adenocarcinoma

ZHEN NING, AMAN WANG, JINXIAO LIANG, YUNPENG XIE, JIWEI LIU, LU FENG, QIU YAN and ZHONGYU WANG

Int J Oncol 45: 1594-1608, 2014; DOI: 10.3892/ijo.2014.2531

Subsequently to the publication of the above paper, the authors have realized that Figs. 3 and 4 contained errors. Two sets of bands in Figs. 3D and 4B were erroneously placed during the process of figure preparation. In Fig. 3D, the β -actin bands for the PANC-1 and CFPAC-1 cells were presented incorrectly, whereas in Fig. 4B, the cdk4 bands for the CFPAC-1 cells were incorrect. The corrected versions of Figs. 3 and 4, showing the correct data for the β -actin bands in Fig. 3D and the cdk4 bands for the CFPAC-1 cells in Fig. 4B, are shown opposite.

Note that these changes do not affect the interpretation of the data or the conclusions reported in this paper, and all the authors agree to this correction. The authors apologize to the Editor and to the readership of the Journal for any inconvenience caused.



This work is licensed under a Creative Commons Attribution 4.0 International (CC BY 4.0) License.

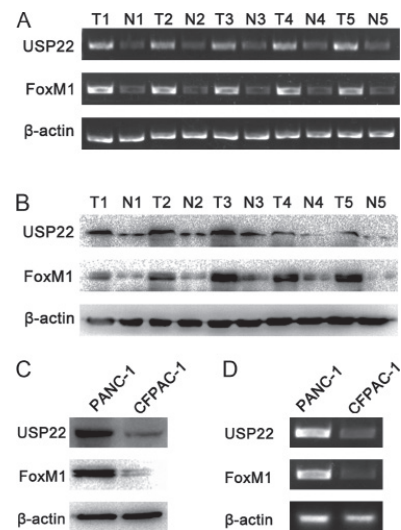


Figure 3. USP22 and FoxM1 expression in fresh-frozen PDA tissues and cell lines. (A and B) RT-PCR and western blot analysis of USP22 and FoxM1 in the 26 pairs of PDA fresh-frozen tumor tissues and the paired normal carcinoma adjacent tissues. (C and D) RT-PCR and western blot analysis of USP22 and FoxM1 in the poorly differentiated PANC-1 cell line in comparison with the highly differentiated CFPAC-1 cell line.

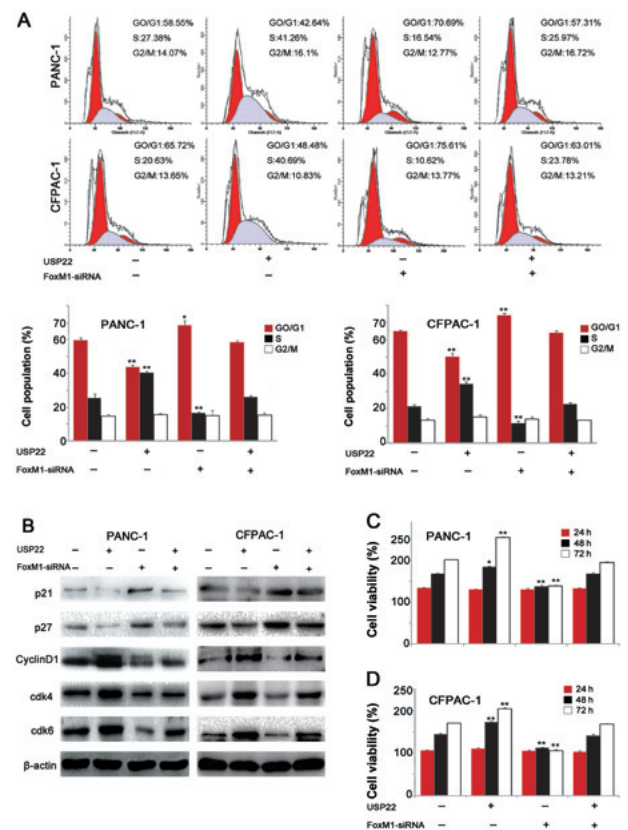


Figure 4. USP22 regulates the G1/S phase transition and affects the expression of G1 phase-related proteins through FoxM1 in PDA cell lines. (A) Flow cytometry analysis was performed on the PDA cell lines PANC-1 and CFPAC-1 that were transfected by USP22, FoxM1-siRNA or USP22+FoxM1-siRNA. Values are mean \pm SD for triplicate samples. (B) Cellular levels of p21, p27, cyclin D1, cdk4, cdk6 in the PDA cell lines PANC-1 and CFPAC-1 that were transfected by USP22, FoxM1-siRNA or USP22+FoxM1-siRNA. (C and D) CCK-8 analysis was performed on the PDA cell lines PANC-1 and CFPAC-1 which were transfected by USP22, FoxM1-siRNA or USP22+FoxM1-siRNA. Values are mean \pm SD for triplicate samples. * P <0.05, compared with control. ** P <0.01, compared with control.