

**CORRIGENDUM**

DOI: 10.3892/ijo.2022.5432

**miR-200b/c targets the expression of RhoE and inhibits the proliferation and invasion of non-small cell lung cancer cells**

QIULIN TANG, MINGXING LI, LIANG CHEN, FENG BI and HONGWEI XIA

Int J Oncol 53: 1732-1742, 2018; DOI: 10.3892/ijo.2018.4493

Subsequently to the publication of the above article, an interested reader drew to the authors' attention that the miR-200c and Si-RhoE data panels in Fig. 5B on p. 1739 appeared to contain an overlap of the data, such that the data would have been derived from the same original source where the different panels were intended to show the results from differently performed experiments.

The authors have re-examined their data, and realize that these data panels were inadvertently selected incorrectly; specifically, the data panel showing the results of the migration activities of A549 following transfection with Si-RhoE in Fig. 5B was incorporated incorrectly during the process of assembling this figure, and this panel contained the overlap with the miR-200c group. The revised version of Fig. 5, showing all the correct data for Fig. 5B, is presented on the next page. The authors confirm that the errors made in the presentation of Fig. 5 did not adversely affect the conclusions reported in this paper, and they are grateful to the Editor of *International Journal of Oncology* for granting them this opportunity to publish a Corrigendum. All the authors agree to the publication of this Corrigendum, and they also apologize to the readership for any inconvenience caused.



This work is licensed under a Creative Commons Attribution 4.0 International (CC BY 4.0) License.

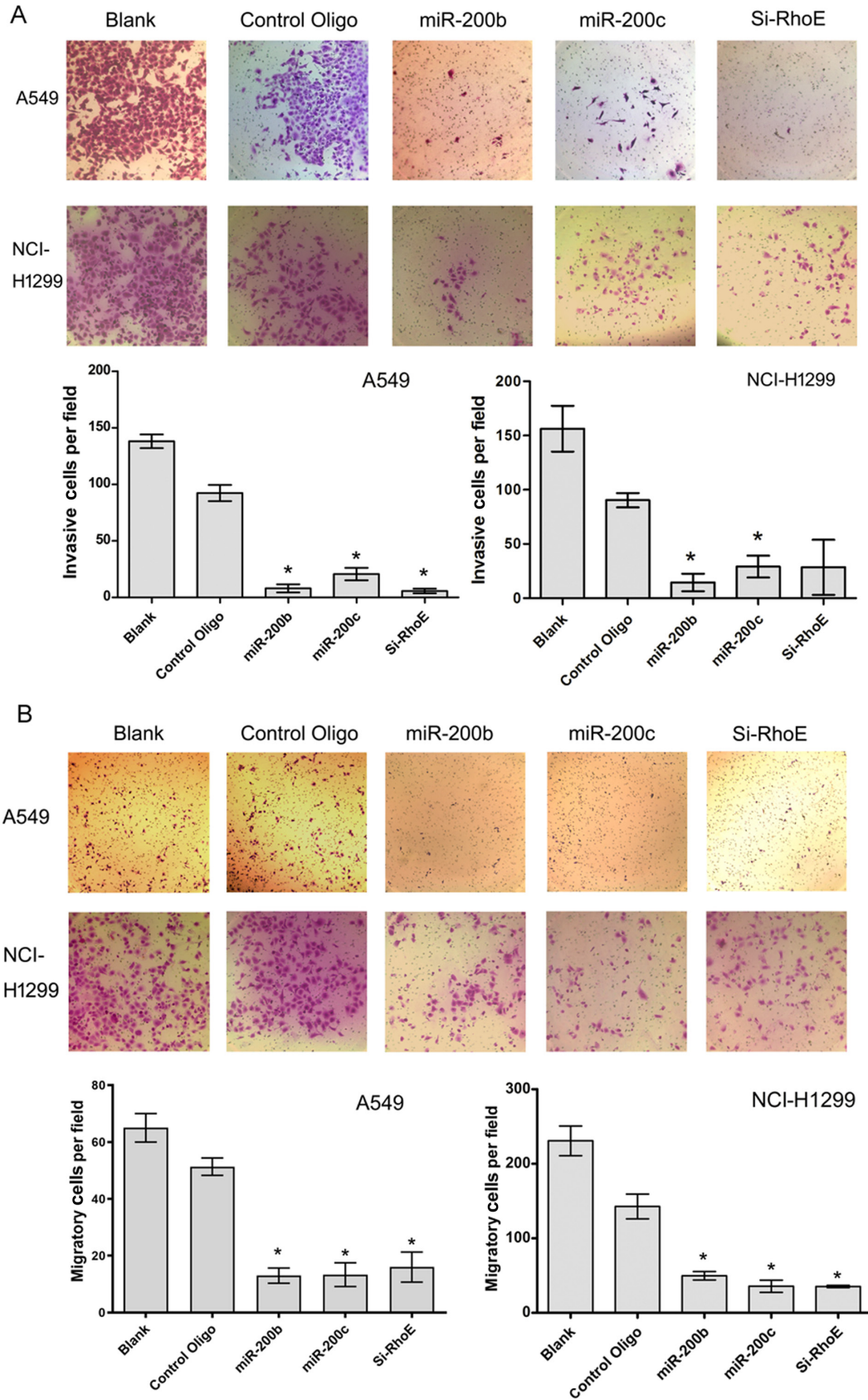


Figure 5. miR-200b/200c inhibits non-small cell lung cancer cell invasion and migration. (A) Invasive activities of A549 and NCI-H1299 48 h following transfected with miR-200b/200c, Si-RhoE or control oligo, were assayed with a Matrigel-coated Transwell. (B) Migration activities of A549 and NCI-H1299 48 h following transfection with miR-200b/200c, Si-RhoE or control oligo, were assayed in a Transwell without Matrigel, and cells that successfully invaded and migrated were stained and quantified 48 h following plating. Data are representative of three independent experiments (magnification,  $\times 20$ ; 10X objective). \* $P < 0.05$  vs. control oligo-transfected cells. RhoE, Rho family GTPase 3; miR, microRNA; Si-small interfering RNA.