

Congenital cataracts due to a novel 2-bp deletion in *CRYBA1/A3*

JING ZHANG¹, YANHUA ZHANG¹, FANG FANG¹, WEIHONG MU¹,
NING ZHANG², TONGSHUN XU³ and QINYING CAO¹

¹Prenatal Diagnosis Center, Shijiazhuang Obstetrics and Gynecology Hospital; ²Department of Cardiology, The Second Hospital of Hebei Medical University; ³Department of Surgery, Shijiazhuang Obstetrics and Gynecology Hospital, Shijiazhuang, Hebei, P.R. China

Received September 22, 2013; Accepted April 11, 2014

DOI: 10.3892/mmr.2014.2324

Abstract. Congenital cataracts, which are a clinically and genetically heterogeneous group of eye disorders, lead to visual impairment and are a significant cause of blindness in childhood. A major proportion of the causative mutations for congenital cataracts are found in crystallin genes. In the present study, a novel deletion mutation (c.590-591delAG) in exon 6 of *CRYBA1/A3* was identified in a large family with autosomal dominant congenital cataracts. An increase in local hydrophobicity was predicted around the mutation site; however, further studies are required to determine the exact effect of the mutation on β A1/A3-crystallin structure and function. To the best of our knowledge, this is the first report of an association between a frameshift mutation in exon 6 of *CRYBA1/A3* and congenital cataracts.

Introduction

Cataracts are opacities of the crystalline lens that can be categorized into early onset (congenital or infantile) and age-related conditions. Congenital cataracts exhibit a prevalence of ~1-6 cases per 10,000 live births and are a significant cause of blindness in childhood (1). Among the cases of congenital cataracts, approximately one-third are hereditary, with most occurring in a nonsyndromic autosomal dominant fashion (2). Congenital cataracts exhibit high clinical and genetic heterogeneity. A total of 40 genetic loci have been associated with congenital cataracts, with ≥ 26 susceptibility genes cloned and sequenced (3). Among the disease-causing mutations identified, ~50% are found in crystallins, 25% in connexins and the remainder within genes such as heat shock transcription factor-4, aquaporin-0 and beaded filament structural protein-2 (3). Crystallins are abundant, soluble proteins

located in the eye lens. The major human crystallins comprise 90% of protein in the mature lens and contain two different superfamilies: the small heat-shock proteins (α -crystallins) and the $\beta\gamma$ -crystallins.

In this study a functional candidate approach was used to investigate the known crystallin genes, including *CRYAA*, *CRYAB*, *CRYBA1/A3*, *CRYBB1*, *CRYBB2*, *CRYGC*, *CRYGD* and *CRYGS*, in which a major proportion of the mutations identified in a large family with congenital cataracts were found.

Subjects and methods

Subjects. A four-generation Chinese family with autosomal dominant congenital cataracts was identified from the Shijiazhuang Obstetrics and Gynecology Hospital (Shijiazhuang, China) (Fig. 1). The study was approved by the Ethics Committee of the Shijiazhuang Obstetrics and Gynecology Hospital, and the study protocol followed the principles of the Declaration of Helsinki. Informed consent was obtained from all family participants. One hundred unrelated subjects without eye disease were recruited from the Shijiazhuang Obstetrics and Gynecology Hospital as unaffected controls. A history of cataract extraction or ophthalmologic examination was used to determine affected family members. In total, eight family members (III:1, III:3, III:6, III:7, III:8, IV:1, IV:2 and IV:3) participated in the study. All participating family members and controls underwent ophthalmic examination, including visual acuity, slit-lamp and fundus examination. Phenotypes were documented by slit-lamp photography and 5 ml venous blood was collected in BD Vacutainer™ tubes (BD Biosciences, San Jose, CA, USA) containing EDTA for further analysis. Genomic DNA was extracted by QIAamp DNA Blood Mini kits (Qiagen Sciences, Inc., Germantown, MD, USA).

Mutation detection. All coding exons and intron-exon junctions of candidate genes known to be associated with congenital cataracts were amplified by polymerase chain reaction (PCR) using the primers listed in Table I. Each reaction mix (25 μ l) contained 20 ng genomic DNA, 1X PCR buffer, 1.5 mM MgCl₂, 0.2 mM deoxynucleotide triphosphates, 0.5 μ M each of forward and reverse primer and 2.5 units Taq DNA polymerase (Tiangen Biotech, Beijing, China). The PCR conditions for DNA amplification were: 95°C for 5 min, followed by

Correspondence to: Dr Qinying Cao, Prenatal Diagnosis Center, Shijiazhuang Obstetrics and Gynecology Hospital, 206 Zhongshan East Road, Shijiazhuang, Hebei 050011, P.R. China
E-mail: hbcaoqinying@126.com

Key words: congenital cataracts, crystallin β A1/A3, frameshift mutation

35 cycles at 95°C for 30 sec, 57–63°C for 30 sec (annealing temperature dependent on the primer), 72°C for 30 sec, with a final extension at 72°C for 10 min. The PCR products were sequenced using an ABI 3730 Automated Sequencer (Applied Biosystems, Foster City, CA, USA). Sequencing results were analyzed using Chromas 2.33 (<http://www.technelysium.com.au/chromas.html>) and compared with the National Center for Biotechnology Information (NCBI) reference sequences (<http://www.ncbi.nlm.nih.gov/>).

Bioinformatics analysis. The amino acid sequences of CRYBA1/A3 protein from four species (human, mouse, rat and cow) were obtained from the NCBI GenBank (<https://www.ncbi.nlm.nih.gov/genbank/>). Conservation analysis was performed using CLC Main Workbench Software (CLC bio, Aarhus, Denmark). Hydrophobicity changes were predicted using ProtScale (<http://web.expasy.org/protscale/>).

Results

Clinical evaluation. Using medical records and ophthalmic examinations, five family members (III:1, III:7, IV:1, IV:2 and IV:3) were diagnosed with bilateral congenital cataracts. Slit-lamp examination of the left eye of the proband (IV:3) showed nuclear lens opacities (Fig. 2). No other ocular or systemic abnormalities were identified.

Mutation analysis. By direct sequencing of the coding regions of candidate genes, a novel heterozygous 2-bp deletion mutation (c.590-591delAG) in exon 6 of *CRYBA1/A3* was identified (Fig. 3). This deletion led to a frameshift starting at amino acid residue 197, with a substitution of glutamic acid to valine, followed by an altered amino acid sequence (wild type, -EWGSHAQTSQIQSIRRIQQ; mutant, -VGLSCPFDADPIDSPNPTV). This altered sequence was identified in all affected family members, but was not detected in any unaffected family members or the 100 unrelated control subjects.

Bioinformatic analysis. Conservation analysis revealed that the sequence from amino acid residue 197 to the COOH-terminal end is highly conserved among species (Fig. 4). Furthermore, an increase in local hydrophobicity around the mutation site was predicted by ProtScale (Fig. 5).

Discussion

Lens crystallin is fundamental for the establishment and maintenance of lens transparency (4). Previous studies in affected patients and transgenic animals indicate that mutations in crystallin genes cause cataracts (14–15). The human lens contains α -, β - and γ -crystallins, of which, β -crystallins comprise the greatest proportion (5). *CRYBA3/A1* is located at 17q11.2 and is a member of the β -crystallin family. The gene utilizes an alternate translation initiation site to encode two proteins (β A3- and β A1-crystallin) from a single mRNA, and consists of six exons. β -crystallin comprises seven protein domains: Four homologous Greek key motifs, a connecting peptide and NH₂- and COOH-terminal extensions. The first two exons of *CRYBA3/A1* encode the N-terminal arm and

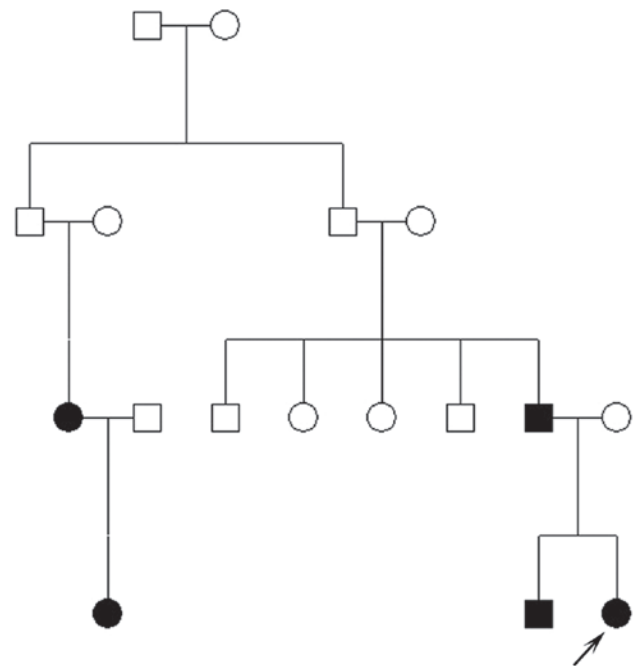


Figure 1. Chinese congenital cataract pedigree. The arrow indicates the proband. Black shading represents family members with bilateral congenital cataracts.

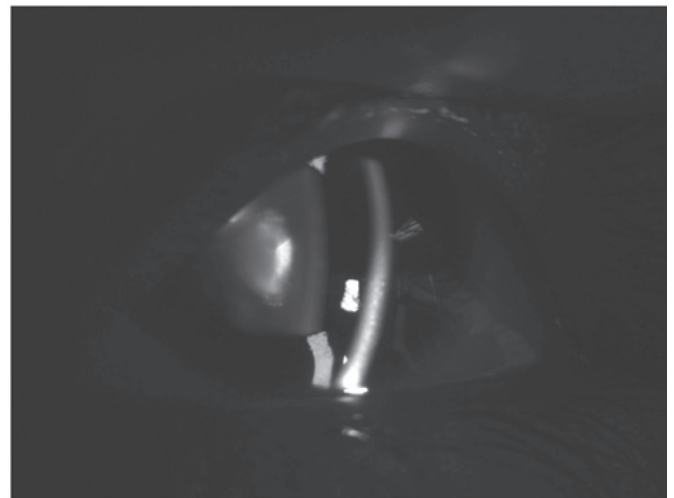


Figure 2. Slit-lamp photograph of the left eye of the proband.

the Greek key motifs are encoded by exons 3–6 (6). β A3- and β A1-crystallin are identical, with the exception of 17 additional amino acid residues found on the NH₂-terminal arm of β A3-crystallin (7).

To date, several *CRYBA3/A1* gene mutations have been associated with autosomal dominant congenital cataracts (Table II). All known *CRYBA3/A1* gene mutations can be divided into two clusters, one located in the exon 3 splice site (8–9), and the other in an exon 4 in-frame deletion (10). In the present study, a novel 2-bp deletion mutation (590-591delAG) in exon 6 of *CRYBA1/A3* was identified. This mutation caused a frameshift and resulted in an alternative β A1/ β A3-crystallin COOH-terminal. Typically, β - or γ -crystallin mutations cause major abnormalities in protein

Table I. Primers used for the polymerase chain reaction.

Name	Forward (5'-3')	Reverse (5'-3')
CRYAA-1	AGCAGCCTTCTTCATGAGC	CAAGACCAGAGTCCATCG
CRYAA-2	GGCAGGTGACCGAAGCATC	GAAGGCATGGTGCAGGTG
CRYAA-3	GCAGCTTCTCTGGCATGG	GGGAAGCAAAGGAAGACAGA
CRYAB-1	AACCCCTGACATCACCATTC	AAGGACTCTCCCGTCCTAGC
CRYAB-2	CCATCCCATTCCCTTACCTT	GCCTCCAAAGCTGATAGCAC
CRYAB-3	TCTCTCTGCCTCTTTCCTCA	CCTTGGAGCCCTCTAAATCA
CRYBA1-1	GGCAGAGGGAGAGCAGAGTG	CACTAGGCAGGAGAAGTGGG
CRYBA1-2	AGTGAGCAGCAGAGCCAGAA	GGTCAGTCACTGCCTTATGG
CRYBA1-3	AAGCACAGAGTCAGACTGAAGT	CCCCTGTCTGAAGGGACCTG
CRYBA1-4	GTACAGCTCTACTGGGATTG	ACTGATGATAAATAGCATGAACG
CRYBA1-5	GAATGATAGCCATAGCACTAG	TACCGATACGTATGAAATCTGA
CRYBA1-6	CATCTCATACCATTGTGTTGAG	GCAAGGTCTCATGCTTGAGG
CRYBB1-1	CCCTGGCTGGGGTTGTTGA	TGCCTATCTGCCTGTCTGTTTCTC
CRYBB1-2	TAGCGGGTAATGGAGGGTG	AGGATAAGAGTCTGGGGAGGTGG
CRYBB1-3	CCTGCACTGCTGGCTTTTATTTA	TCTCCAGAGCCCAGAACCATG
CRYBB1-4	CCAACCTCAAGGAAACAGGCATA	CCTCCCTACCCACCATCATCTC
CRYBB1-5	TAGACAGCAGTGGTCCCTGGAGA	AGCACTGGGAGACTGTGGAAGG
CRYBB1-6	CCTAGAAAAGGAAACCGAGGCC	AGCGAGGAAGTCACATCCCAGTA
CRYBB2-1	GTTTGGGGCCAGAGGGGAGTGGT	TGGGCTGGGGAGGGACTTTCAGTA
CRYBB2-2	CCTTCAGCATCCTTTGGGTTCTCT	GCAGTCTAAAAGCTTCATCAGTC
CRYBB2-3	GTAGCCAGGATTCTGCCATAGGAA	GTGCCCTCTGGAGCATTTCATAGT
CRYBB2-4	GGCCCCCTCACCCATACTCA	CTTCCCTCTGCCTCAACCTAATC
CRYBB2-5	CTTACCCTTGGGAAGTGGCAATGG	TCAAAGACCCACAGCAGACAAGTT
CRYGC-1	TGCATAAAATCCCCTTACCG	CCTCCCTGTAACCCACATTG
CRYGC-2	TGGTTGGACAAATTCTGGAAG	CCCACCCCACTTCACTTCTTA
CRYGD-1	CAGCAGCCCTCCTGCTAT	GGGTCCTGACTTGAGGATGT
CRYGD-2	GCTTTTCTTCTCTTTTATTTCTGG	AAGAAAGACACAAGCAAATCAGT
CRYGS-2	GAAACCATCAATAGCGTCTAAATG	TGAAAAGCGGGTAGGCTAAA
CRYGS-3	AATTAAGCCACCCAGCTCCT	GGGAGTACACAGTCCCCAGA
CRYGS-4	GACCTGCTGGTGATTTCCAT	CACTGTGGCGAGCACTGTAT

Table II. Summary of mutations in *CRYBA1/A3* responsible for congenital cataracts.

Locus	Nucleotide	Amino acid
IVS3 (14)	IVS3+1 G.>C	Splice site mutation
IVS3 (5)	IVS3+1 G.>A	Splice site mutation
IVS3 (8)	IVS3+1 G.>T	Splice site mutation
IVS3 (9)	IVS3+2 T.>G	Splice site mutation
Exon 4 (10,13)	276-281delGGAGGA	p.90Glydel p.91Glydel
Exon 4	279-281delGGAGGA	p.91Glydel

IVS3, sequence of the 3rd intron.

structure, stability, solubility or the ability to oligomerize, and are predicted to precipitate from solution to cause lens opacity formation (11-12). The COOH-terminal of β A1/ β A3-crystallin is highly conserved, and it has been reported that the C-terminal domain plays a role in structural stability (11). The ProtScale protein analysis in the present

study showed a notable increase in local hydrophobicity around the deletion site in *CRYBA3/A1*. As demonstrated in other lens proteins, hydrophobicity is associated with crystallin activities, and an increased hydrophobic interaction can reduce protein solubility or lead to abnormal protein folding (12-13). In the present study, it was speculated that

the mutant COOH-terminal produces an abnormal protein structure with altered stability and/or solubility.

In conclusion, this is the first study, to the best of our knowledge, to associate a frameshift mutation in exon 6 of *CRYBA1/A3* with the development of congenital cataracts, and highlights the physiological importance of β A1/A3-crystallin. The possible effect of the mutation on β A1/A3-crystallin structure and function requires further investigation.

Acknowledgements

The authors would like to thank the family members for their participation in this study. The study was supported by a grant from the Plan Issue of Hebei Province Health Department, (project no.20110186).

References

- Francis PJ, Berry V, Bhattacharya SS and Moore AT: The genetics of childhood cataract. *J Med Genet* 37: 481-488, 2000.
- Reddy MA, Francis PJ, Berry V, Bhattacharya SS and Moore AT: Molecular genetic basis of inherited cataract and associated phenotypes. *Surv Ophthalmol* 49: 300-315, 2004.
- Hejtmancik JF: Congenital cataracts and their molecular genetics. *Semin Cell Dev Biol* 19: 134-149, 2008.
- Jester JV: Corneal crystallins and the development of cellular transparency. *Semin Cell Dev Biol* 19: 82-93, 2008.
- Zhu Y, Shentu X, Wang W, Li J, Jin C and Yao K: A Chinese family with progressive childhood cataracts and IVS3+1G>A *CRYBA3/A1* mutations. *Mol Vis* 16: 2347-2353, 2010.
- Wistow G, Turnell B, Summers L, Slingsby C, Moss D, Miller L, Lindley P and Blundell T: X-ray analysis of the eye lens protein gamma-II crystallin at 1.9 Å resolution. *J Mol Biol* 170: 175-202, 1983.
- Werten PJ, Carver JA, Jaenicke R and de Jong WW: The elusive role of the N-terminal extension of beta A3- and beta A1-crystallin. *Protein Eng* 9: 1021-1028, 1996.
- Yang Z, Li Q, Ma Z, Guo Y, Zhu S and Ma X: A G→T splice site mutation of *CRYBA1/A3* associated with autosomal dominant suture cataracts in a Chinese family. *Mol Vis* 17: 2065-2071, 2011.
- Yang Z, Su D, Li Q, Yang F, Ma Z, Zhu S and Ma X: A novel T→G splice site mutation of *CRYBA1/A3* associated with autosomal dominant nuclear cataracts in a Chinese family. *Mol Vis* 18: 1283-1288, 2012.
- Lu S, Zhao C, Jiao H, Kere J, Tang X, Zhao F, Zhang X, Zhao K and Larsson C: Two Chinese families with pulverulent congenital cataracts and deltaG91 *CRYBA1* mutations. *Mol Vis* 13: 1154-1160, 2007.
- Gupta R, Srivastava K and Srivastava OP: Truncation of motifs III and IV in human lens betaA3-crystallin destabilizes the structure. *Biochemistry* 45: 9964-9978, 2006.
- Srivastava K, Gupta R, Chaves JM and Srivastava OP: Truncated human betaB1-crystallin shows altered structural properties and interaction with human betaA3-crystallin. *Biochemistry* 48: 7179-7189, 2009.
- Reddy MA, Bateman OA, Chakarova C, Ferris J, Berry V, Lomas E, Sarra R, Smith MA, Moore AT, Bhattacharya SS and Slingsby C: Characterization of the G91del *CRYBA1/3*-crystallin protein: a cause of human inherited cataract. *Hum Mol Genet* 13: 945-953, 2004.
- Bateman JB, Geyer DD, Flodman P, Johannes M, Sikela J, Walter N, Moreira AT, Clancy K and Spence MA: A new betaA1-crystallin splice junction mutation in autosomal dominant cataract. *Invest Ophthalmol Vis Sci* 41: 3278-3285, 2000.
- Andley UP, Hamilton PD, Ravi N and Wehl CC: A knock-in mouse model for the R120G mutation of α B-crystallin recapitulates human hereditary myopathy and cataracts. *PLoS One* 6: e17671, 2011.