

## CORRIGENDUM

DOI: 10.3892/ol.2017.6875

**A novel t(9;22;11) translocation involving 11q24 in a patient with chronic myeloid leukemia: A case report**

JAEHYEON LEE, DAL SIK KIM, HYE SOO LEE, SAM IM CHOI and YONG GON CHO

Oncol Lett 13: 1711-1713, 2017; DOI: 10.3892/ol.2017.5668

Following the publication of this article, an interested reader drew to our attention that, in Fig. 1, the representative image of the karyotype did not correspond to the translocation that is described, since the second chromosome 11 portrayed was a chromosome 12.

A corrected version of Fig. 1, containing the correct chromosomes, is shown below. The error did not affect the conclusions reported in this study. We sincerely apologize for this mistake, and thank the reader of our article who drew this matter to our attention. Furthermore, we regret any inconvenience this mistake has caused.

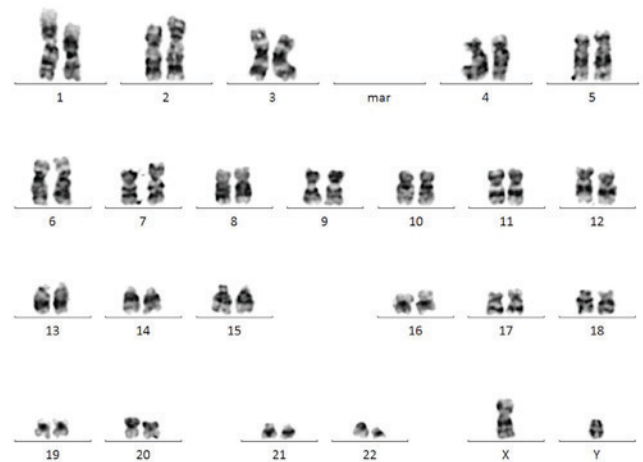


Figure 1. Representative image showing the three-way t(9;22;11) in a karyotype of the patient that was 46, XY,t(9;22;11)(q34;q11.2;q24). t, translocation.