

# Functional analysis of BRCT missense mutations in *BRCA1*-mutated Chinese Han familial breast cancer

HONG ZHANG<sup>1\*</sup>, LINSSEN LI<sup>3\*</sup>, YUXIA WANG<sup>2</sup>, C. CAMERON YIN<sup>4</sup>, YUNTAO XIE<sup>2</sup>, XIJUAN LIU<sup>1</sup>, HUIRONG DING<sup>1</sup>, ZHIHUA TIAN<sup>1</sup>, JING SHEN<sup>1</sup>, LONG HE<sup>3</sup>, MIAORAN XIA<sup>4</sup>, XI MA<sup>3</sup> and LINA WU<sup>1,4</sup>

<sup>1</sup>Central Laboratory; <sup>2</sup>Breast Center, Key Laboratory of Carcinogenesis and Translational Research (Ministry of Education/Beijing), Peking University Cancer Hospital & Institute, Beijing 100142; <sup>3</sup>State Key Laboratory of Animal Nutrition, China Agricultural University, Beijing 100193, P.R. China; <sup>4</sup>Department of Hematopathology, The University of Texas MD Anderson Cancer Center, Houston, TX 77030, USA

Received December 28, 2015; Accepted July 21, 2017

DOI: 10.3892/ol.2017.7003

**Abstract.** Breast cancer 1 (*BRCA1*) is one of the most common tumor suppressor genes in breast cancer. The BRCT domain of *BRCA1* has been shown to have a critical role in tumor suppression. In a previous study, two *de novo* BRCT missense mutations of *BRCA1*, G1763V and L1786P were identified from Chinese females with familial breast cancer. In the present study, the function of these two novel mutations were assessed by bioinformatics analysis and a series of experiments investigating cell proliferation, cell cycle and chemotherapy combination. Although bioinformatics analysis indicated that the mutants may be deleterious, a series of experiments revealed that the two mutants significantly reduced the growth and increased cell apoptosis similar to the function of *BRCA1* wild type. Furthermore, no synergistic effect between the Olaparib and *BRCA1* mutation was noted on cell apoptosis. These results demonstrated that these two mutations did not affect the tumor suppressor function of *BRCA1*. It was concluded that not all *BRCA1* missense mutations are pathogenic and that any new *BRCA1* mutation should be assessed for its effect on the tumor suppressor function of *BRCA1*.

## Introduction

Breast cancer is one of the most common malignant neoplasms in women. In total, 5-10% of breast cancer cases are associated with genetic susceptibility, and the most common breast cancer

susceptibility genes are breast cancer 1 (*BRCA1*) and breast cancer 2 (*BRCA2*) (1). Differences in mutations of *BRCA1* and *BRCA2* have been reported among different ethnic populations. Bergman *et al* (2) reported a familial mutation rate of up to 36% in *BRCA1* or *BRCA2* in Western Swedish breast cancer families. In Chinese females with familial breast cancer the mutation rate of *BRCA1* and *BRCA2* was ~10%, of which 50-60% of the mutations have not been previously reported, and their functions are unknown (3).

The *BRCA1* gene is a tumor suppressor gene that is located on 17q21, with a total length of ~100 kb. *BRCA1* consists of 24 exons and encodes a protein with 1,863 amino acids. *BRCA1* has an important role in DNA damage repair, cell cycle control, protein ubiquitination and chromatin remodeling (4). *BRCA1* includes two important functional domains, namely really interesting new gene (RING) domain in the N-terminal and *BRCA1* C terminus (BRCT) domain in the C-terminal. Several studies have shown that the RING domain of *BRCA1* interacts with *BRCA1*-associated RING domain protein 1 to form a powerful E3 ubiquitin ligase and has a role in tumor suppression by regulating several signaling transduction pathways (5,6). However, Shakya *et al* (7) reported that the BRCT domain was the structure with tumor suppressor function, since point mutations of the BRCT domain caused rapid formation of tumors in mouse models.

Over 500 different *BRCA1* mutations have been identified throughout its coding region, including nonsense mutations, missense mutations, frame shift insertions or deletions, as well as mutations in the untranslated region (8). Among these mutations, frame shift insertions or deletions or nonsense mutations, resulting in 20-30% of familial breast cancer cases, are the most deleterious and usually result in the formation of a truncated protein. For example, the 185delAG *BRCA1* mutation led to the loss of all known functional domains (9). Missense mutations, accounting for 5-10% of familial breast cancer cases, often occur in the coding region of the highly conserved amino acids (10). Missense mutations usually only partially affect the function of wild-type *BRCA1* and rarely cause loss of the entire structure or function, while the clinical significance of these missense mutations is often uncertain (11). As a consequence, 10-20% of patients with familial breast cancer

---

*Correspondence to:* Dr Lina Wu, Central Laboratory, Key Laboratory of Carcinogenesis and Translational Research (Ministry of Education/Beijing), Peking University Cancer Hospital & Institute, 52 Fucheng Road, Beijing 100142, P.R. China  
E-mail: lnwu@bjmu.edu.cn

\*Contributed equally

**Key words:** BRCT mutation, *BRCA1*, breast cancer, tumor suppression

cannot receive any meaningful information from clinical genetic testing (8,11).

Two missense mutations, G1763V and L1786P were identified from Chinese females with familiar breast cancer in our previous study (unpublished data). These two mutations, which are located in the BRCT domain, have not been previously described in the database established by the Breast Cancer Information Core. The present study investigated the function of these two mutations and revealed that these novel missense mutations did not affect the tumor suppressor function of the *BRCA1* gene.

## Materials and methods

**Cell line and cell culture.** The *BRCA1*-mutated breast cancer HCC1937 cell line was obtained from the Cell Bank of Shanghai Institute of Cell Biology (Shanghai, China). No wild-type BRCA protein was produced in the HCC1937 cell line. The cells were maintained in RPMI-1640 medium (Gibco; Thermo Fisher Scientific, Inc., Waltham, MA, USA) supplemented with 10% heat-inactivated fetal bovine serum (FBS, Gibco; Thermo Fisher Scientific, Inc.) at 37°C in a humidified atmosphere with 5% CO<sub>2</sub>.

**Construction of mutated plasmids and transfection.** A plasmid containing a full-length *BRCA1* cDNA on a pcDNA3.1 backbone was provided by Dr Genze Shao (Peking University Health Science Center, Beijing, China), for the sub-cloning and generation of the mutated expression constructs. The G1763V and L1786P mutations were generated in this plasmid using QuikChange II XL Site-Directed Mutagenesis kit (Agilent Technologies, Inc., Santa Clara, CA, USA). Primer pairs for the G1763V mutagenesis protocol were as follows: 1763 mutation forward, 5'-AGGACAGAAAGATCTTCAGGGTGCTAGAAATCTG-3' and reverse, 5'-ACCCTGAAGATCTTTCTGTCCTGGGATTCTCTTG-3'. The primer pairs for the L1786P mutagenesis protocol were as follows: 1786 mutation forward, 5'-GGAATGGATGGTACAGCcGTGTGGTGCTTCTGTGG-3' and reverse, 5'-CCACAG AAGCACCACACgGCTGTACCATCCATTCC-3'. Large-scale DNA preparations were made using the Qiagen Plasmid Maxi Kit (Qiagen, Inc., Valencia, CA, USA). Each plasmid was sequenced entirely to verify their identity. For gene transfection, HCC1937 cells were grown overnight at 37°C and transfected with plasmids using Lipofectamine 2000 (Invitrogen; Thermo Fisher Scientific, Inc.), according to the manufacturer's instructions.

**Reverse transcription-quantitative polymerase chain reaction (RT-qPCR).** Total RNA was extracted from transfected HCC1937 cells using TRIzol reagent (Invitrogen; Thermo Fisher Scientific, Inc.), according to the manufacturer's instructions. Reverse transcription was performed using a total of 1 µg RNA, oligo (dT) 15 primer, and the ThermoSCRIPT reverse transcription kit (Invitrogen; Thermo Fisher Scientific, Inc.). RT-qPCR was performed using SYBR Green PCR Master Mix (Thermo Fisher Scientific, Inc.) on a ABI7500 Real-Time PCR System (Thermo Fisher Scientific, Inc.). qPCR was performed using the following conditions: 95°C for 10 min, followed by 40 cycles of 95°C for 30 sec and 60°C

for 1 min. Primers for *BRCA1*, poly (ADP-ribose) polymerase 1 (*PARP*) and *GAPDH* were as follows: *BRCA1\_F*, 5'-AGG TCCAAAGCGAGCAAGAG-3' and *BRCA1\_R*, 5'-AGGTGC CTCACACATCTGCC-3'; *PARP\_F*, 5'-CCTAAAGGCTCA GAACGACC-3' and *PARP\_R*, 5'-AGGAGGGCACC GAAC ACC-3'; and *GAPDH\_F*, 5'-AGGTCGGAGTCAACGGAT TTG-3' and *GAPDH\_R*, 5'-GTGATGGCATGGACTGTG GT-3'. The results of *BRCA1* and *PARP* were normalized to *GAPDH*. Data were calculated based on 2<sup>-ΔCq</sup>, where ΔCq=Cq (Target)-Cq (Reference). Fold change was calculated using the 2<sup>-ΔΔCq</sup> method (12).

**Protein extraction and immunoblotting.** Proteins were extracted from cells using radioimmunoprecipitation assay buffer containing complete protease inhibitor cocktail (Roche Diagnostics GmbH, Mannheim, Germany). Proteins were separated using 8% SDS-PAGE and transferred to polyvinylidene fluoride membranes. The membranes were then blocked with 5% non-fat milk in TBST [15 mM Tris-HCl (pH 7.4), 0.9% NaCl and 0.05% Tween-20 (pH 7.4)] for 1 h at room temperature, and then incubated with primary antibody overnight at 4°C using rabbit monoclonal anti-human BRCA1 antibody (dilution, 1:1,000; A301-377; Bethyl Laboratories, Montgomery, TX, USA), and goat anti-rabbit secondary antibody (dilution, 1:5,000; ZDR-5306; ZSGB-BIO, Beijing, China). Immunoreactive bands were detected using Super Signal West Femto Chemiluminescent Substrate (Merck KGaA, Darmstadt, Germany). The aforementioned experiments were performed at least three times with consistent results.

**Cell proliferation assay.** The cell proliferation assay was performed using cell counting kit-8 assay. In total, 2x10<sup>3</sup> cells were cultured in 96-well culture plates. The cells were resuspended in RPMI-1640 medium containing 10% FBS and cultured for 0, 24, 48 or 72 h at 37°C. The number of viable cells was determined by measuring absorbance at 450 nm using FLUOstar OPTIMA (BMG Labtech, Offenburg, Germany), according to the manufacturer's instructions. Each experiment was performed in triplicate.

**Laser confocal fluorescence microscopy for subcellular localization.** The cells were fixed in 4% paraformaldehyde for 30 min at room temperature and lysed with 0.2% Triton-X-100 for 15 min. This was followed by the addition of 5% bovine serum albumin (ZLI-9027, ZSGB-BIO, Beijing, China) to the lysate and incubation for 30 min at 37°C. Rabbit monoclonal anti-human BRCA1 antibody (dilution, 1:1,000; A301-377; Bethyl Laboratories) and monoclonal antibody for histone H2A variant X (γH2AX; dilution, 1:100; 05-636-I; EMD Millipore, Billerica, MA, USA) were added to the mixture followed by incubation at 4°C overnight. Cell lysate with 0.01 mol/l phosphate-buffered saline instead of the primary antibody was used as a negative control. Fluorescence-labeled secondary antibodies (dilution, 1:4,000; ZF-0311, ZF-0316; ZSGB-BIO, Beijing, China) were added to the mixture, which was then incubated in the dark at room temperature for 30 min. The mixture was further incubated with DAPI solution at room temperature for 5 min and then mounted in Tris-buffered glycerol solution. The subcellular localization of the proteins

was determined using confocal laser scanning microscopy at a magnification of x12,50.

**Flow cytometry analysis of apoptosis.** A total of  $3 \times 10^5$  HCC1937 cells were seeded in 6-wells culture plates in RPMI-1640 medium with 10% FBS. After 12 h, cells were transfected with the aforementioned plasmids using Lipofectamine 2000. Subsequent to transfection, cells were collected at 24, 48 and 72 h and stained with fluorescein isothiocyanate-conjugated Annexin V (BioVision, Inc., Milpitas, CA, USA) at room temperature for 30 min, followed by staining with propidium iodide (PI) 1 min prior to analysis for apoptosis by FACScan (BD Biosciences, San Jose, CA, USA).

**Cell cycle analysis.** Cell cycle stage was determined by flow cytometry using a cell-cycle assay kit (Ab139418, Abcam, Cambridge, UK). Briefly, HCC1937 cells were harvested by centrifugation with  $300 \times g$ , 5 min at  $4^\circ\text{C}$ , washed with PBS and fixed with cold 75% ethanol at  $4^\circ\text{C}$  overnight. The fixed cells were then stained with PI and RNaseA (Ab139418; Abcam, Cambridge, UK), according to the manufacturer's instruction. Following a 30-min incubation in the dark, fluorescence-activated cells were sorted in a FACScan flow cytometer (BD Biosciences, San Jose, CA, USA). The cells were distinguished as being at the G0/G1, G2/M and S phases of the cell cycle based on the fluorescence intensity, and the distribution of the cell-cycle stage was analyzed using ModFit software (BD Biosciences).

**Statistical analysis.** Results were expressed as mean  $\pm$  standard deviation. One-way analysis of variance was used for statistical comparison among groups. Multiple comparison between the groups was performed using Bonferroni method.  $P < 0.05$  was considered to indicate a statistically significant difference.

## Results

**Bioinformatics analyses showed that G1763V and L1786P abolish the tumor suppression function of BRCA1.** Two novel BRCA1 missense mutations in the BRCT domain were identified from the cohort of Chinese women with familial breast cancer, consisting of G1763V due to p5407 G>T and L1786P due to p5476 T>C. Protein mutation analysis software, consisting of PolyPhen (<http://genetics.bwh.harvard.edu/pph/>), SIFT (<http://sift.jcvi.org/>) and Pmut (<http://mmb2.pcb.ub.es:8080/PMut/>), was used to predict the impact of these two BRCT mutations on BRCA1 protein and their possible pathogenicity. PolyPhen software predicted that G1763V and L1786P both damage the original protein function. SIFT and Pmut software predicted that both mutations were deleterious (Table I).

**G1763V and L1786P mutants were expressed in the BRCA1-deficient HCC1937 cell line.** In order to test and verify the function of G1763V and L1786P mutations, mutation plasmids were constructed from pcDNA3.1-BRCA1 (termed wt BRCA1), and the expression of wild and mutant BRCA1 was examined in the BRCA1-deficiency breast cancer HCC1937 cell line. Fig. 1A shows the schematic diagram of the location

of the mutants. The sequences of the mutant constructs were verified by sequencing (Fig. 1B). BRCA1 overexpression was observed both at the mRNA level and protein level in these three groups compared with the control group 24 h subsequent to transfection with wt BRCA1 and two mutants (Fig. 1C and D).

**G1763V and L1786P mutants reduced cell growth and increased cell apoptosis in vitro.** Subsequent to successfully constructing the transient transfection cell model, the effect of BRCA1 mutants on breast cancer cell growth and apoptosis was assessed *in vitro*. Cell proliferation assay using HCC1937 cells showed that the wild type BRCA1 and both of the two mutants significantly reduced the growth of breast cancer cells compared with the control group ( $P < 0.05$ ; Fig. 2A). Additionally, flow cytometric analysis showed that the wild type BRCA1 and both of the mutants significantly increased cell apoptosis compared with the control group (Fig. 2B and C) 72 h subsequent to transfection. These data indicated that G1763V and L1786P have similar tumor suppressor function to wild-type BRCA1 *in vitro*.

**G1763V and L1786P mutants caused S-phase arrest after irradiation.** In order to investigate the function of these two mutants following DNA damage, a DNA damage model was created using  $\gamma$  radiation. Phosphorylation of  $\gamma\text{H2AX}$  is the most sensitive marker that can be used to examine the DNA damage and the subsequent DNA repair. It was found that  $\gamma\text{H2AX}$  foci increased significantly in the irradiated group when compared with the groups without irradiation (Fig. 3A). After 8-Gy irradiation, the percentages of cells in the S-phase were 42.1, 42.1 and 40.0% in the wild-type BRCA1, G1763V and L1786P cells, respectively, which were increased compared with the control group with 29.2% (control vs. wt BRCA1, control vs. G1763V, control vs. L1786P;  $P < 0.05$ ; Fig. 3B).

**G1763V and L1786P mutants did not sensitize cells to the PARP1 inhibitor Olaparib.** In order to test the optimal concentration of Olaparib, HCC1937 cells were cultured in the presence of 0, 20, 40, 80 or  $160 \mu\text{M}$  Olaparib. After 48 h, it was observed that  $80 \mu\text{M}$  Olaparib produced the maximum suppression of PARP expression by 50% (Fig. 4A). Olaparib ( $80 \mu\text{M}$ ) was then added into the cell cultures when the transfected cells were adherent. Olaparib increased cell apoptosis in HCC1937 (control  $0 \mu\text{M}$  vs. control  $80 \mu\text{M}$ ;  $P < 0.05$ ). However, no synergistic effect between the Olaparib and BRCA1 mutation was noted on cell apoptosis (Fig. 4B).

## Discussion

BRCA1 is one of the best-known tumor suppressor genes in breast cancer (8,13). Numerous mutations of BRCA1 have been reported (14-17), but the function of many of these mutations has not been studied. The present study identified two novel missense mutations of the BRCT domain from a cohort of Chinese Han patients with familial breast cancer, and explored the function and clinical significance of the mutations.

The key function of BRCA1 is to suppress tumor formation in breast and ovarian tissues. Using a mouse model of hereditary breast cancer, Shakya *et al* (7) found that the tumor

Table I. Bioinformatics analysis of the two breast cancer 1 mutations.

| Nucleotide change | Protein change | Mutation type | SIFT   | PolyPhen          | Pmut         |
|-------------------|----------------|---------------|--------|-------------------|--------------|
| 5407 G>T          | G1763V         | Germline      | Damage | Possible damaging | Pathological |
| 5476 T>C          | L1786P         | Germline      | Damage | Possible damaging | Pathological |

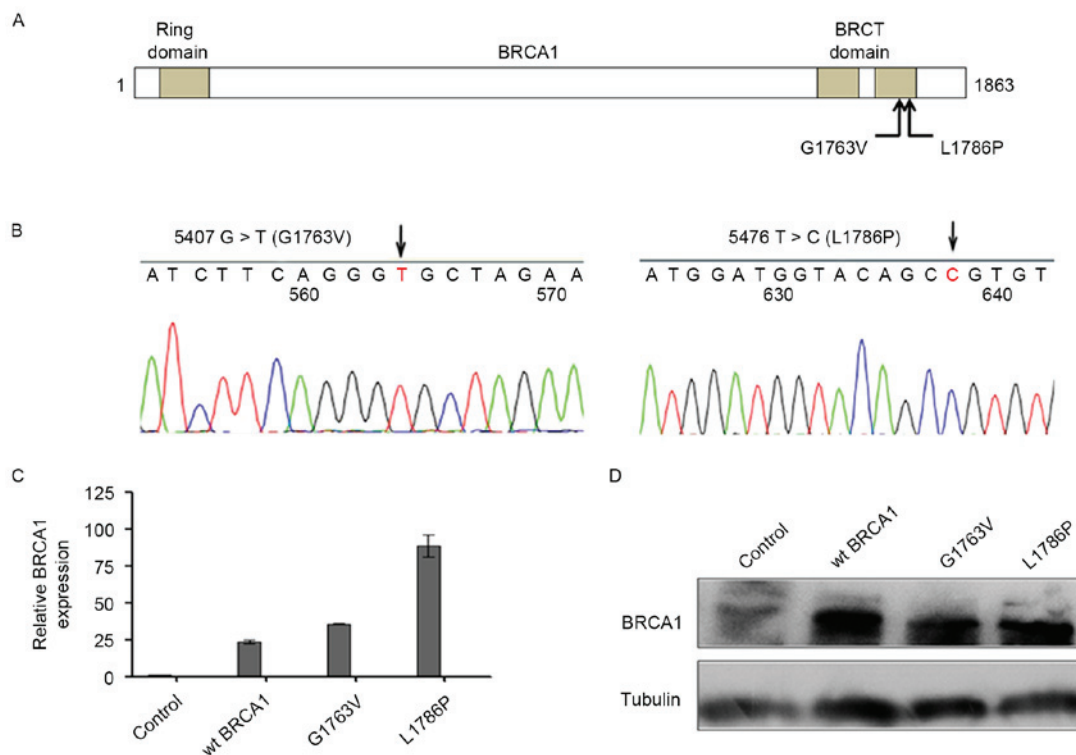


Figure 1. Expression of G1763V and L1786P mutants in the BRCA1-deficient HCC1937 cell line. (A) The schematic diagram of the location of the G1763V and L1786P. (B) Sequencing results of 5407 G>T and 5476 T>C. (C) Wild-type and mutated *BRCA1* over expression at mRNA level. (D) Wild-type and mutated *BRCA1* over expression at protein level. BRCA1, breast cancer 1; wt, wild type.

suppression function of *BRCA1* is dependent on the ability of the BRCT domain to bind to its phospho-ligands. The BRCT motif of *BRCA1* forms a phospho-recognition domain that preferentially binds to the phosphorylated isoforms of repair proteins, Abraxas/CCDC98, BACH1/FancJ and CtIP, and thus has a critical role in tumor suppression (18,19). Numerous tumor-associated *BRCA1* alleles have frame shift/nonsense mutations that eliminate one or both BRCT motifs. According to the bioinformatics analyses, it was speculated that G1763V and L1786P may damage the tumor suppressor function of *BRCA1*. Notably, it was found that these two mutants had a similar tumor suppression function to wild-type *BRCA1*, in terms of reducing proliferation and inducing apoptosis in breast cancer cells.

PARP1 is a nuclear protein that rapidly binds to single-stranded DNA breaks to facilitate DNA repair (20). Inhibitors of PARP efficiently shrink breast, ovarian or prostate tumors in patients carrying hereditary mutations in the homologous recombination genes *BRCA1* or *BRCA2* (21-24). Using the BRCA1-deficient HCC1937 breast cancer cell line, the present results showed that G1763V and L1786P mutants were not sensitive to the inhibition of PARP inhibitor Olaparib.

This data further indicated that these two mutations had no deleterious function.

These two mutants have no effect on the suppressor function of *BRCA1*, the reason for which requires additional investigation. Using the protein structure software, it was found that the G1763V and L1786P missense mutations were far away from the interaction site between *BRCA1* and its phospho-ligands (data not shown), which may at least partially explain why these two mutants have no deleterious effect on *BRCA1* function.

In summary, the present study identified two novel *BRCA1* missense mutations in the BRCT domain, G1763V and L1786P, and these two mutations did not affect the tumor suppressor function of *BRCA1*. It was concluded that not all *BRCA1* missense mutations are pathogenic and that any new *BRCA1* mutation should be assessed for its effect on the tumor suppressor function of *BRCA1*.

#### Acknowledgements

The present study was supported by the National Natural Science Foundation of China (grant no. 81202106). The

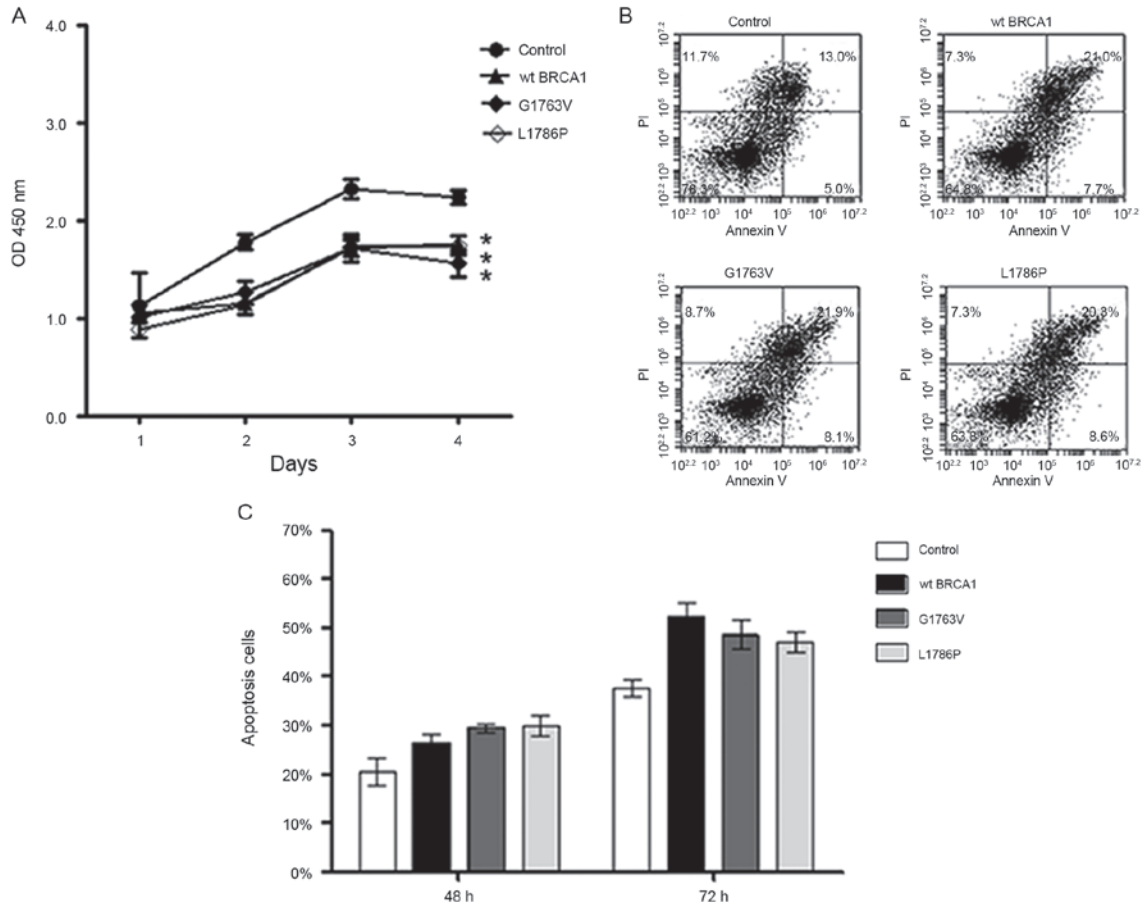


Figure 2. Effect of G1763V and L1786P mutants on HCC1937 cells in cell growth and apoptosis. (A) Growth curve of HCC1937 cells with over expression of the two mutants. (B) Flow cytometry of HCC1937 in apoptosis at 72 h after transfection. The dot plots showed the percentage of apoptosis. (C) Bar graph showing apoptosis in the different groups studied. Bars indicate the mean  $\pm$  standard deviation of triplicate results. \* $P < 0.05$ . BRCA1, breast cancer 1; wt, wild type; OD, optical density; PI, propidium iodide.

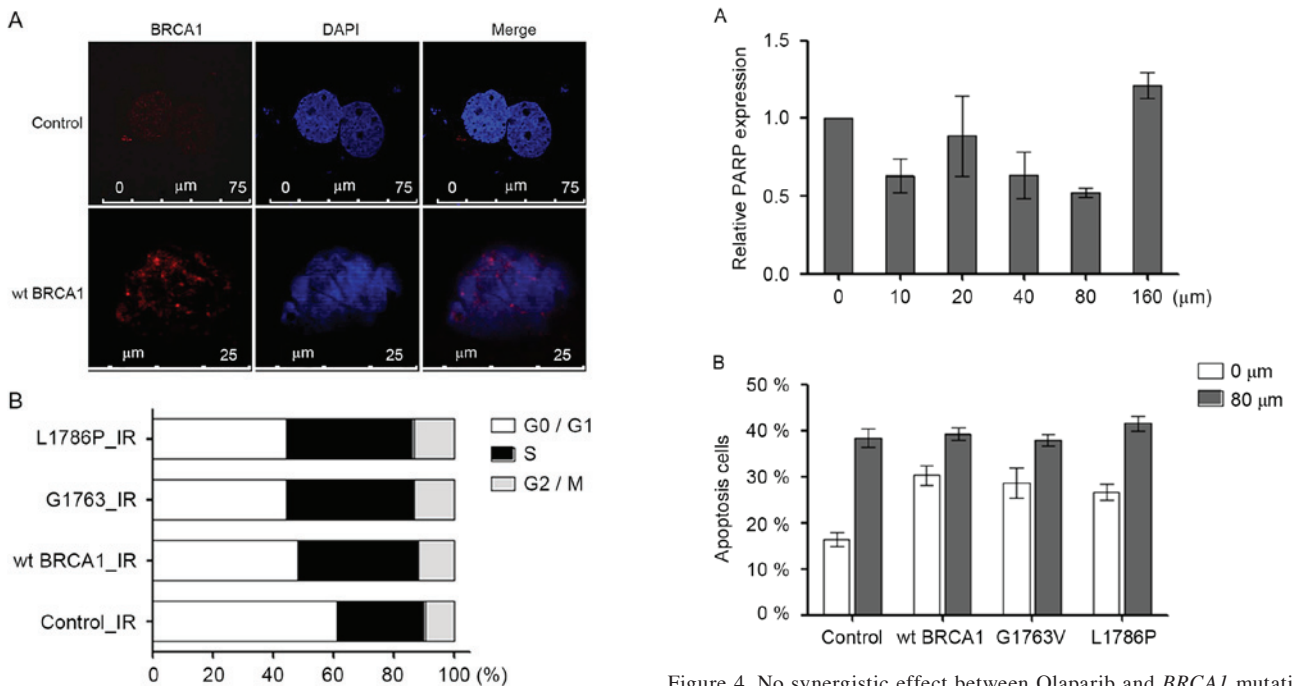


Figure 3. Cell cycle of S-phase arrest by BRCA1 mutation after irradiation. (A) Subcellular localization of  $\gamma$ H2AX after 8-Gy irradiation by immunofluorescence. (B) Cell-cycle stages were showed in the different groups studied.  $\gamma$ H2AX, histone H2A variant X; BRCA1, breast cancer 1; wt, wild type.

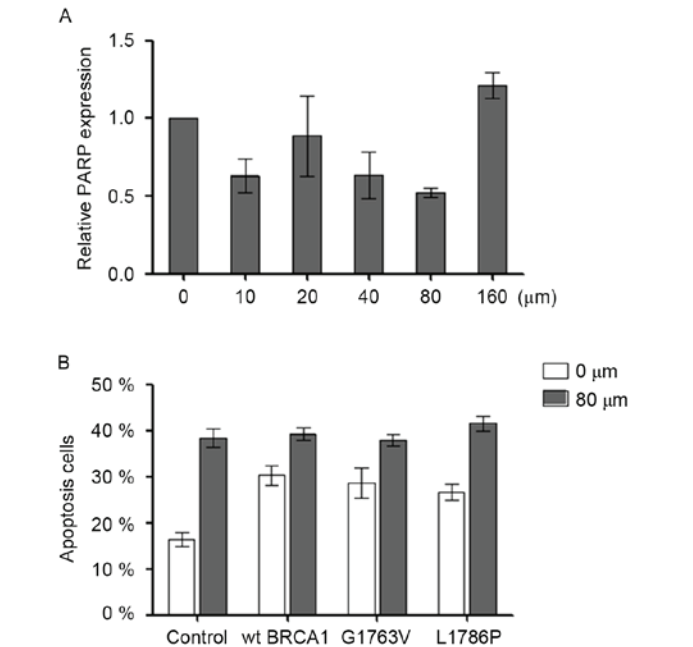


Figure 4. No synergistic effect between Olaparib and BRCA1 mutations. (A) The mRNA expression of PARP in HCC1937 with 0, 10, 20, 40, 80 and 160  $\mu$ M Olaparib. (B) Bar graph showing apoptosis in the different groups studied. Bars indicate the mean  $\pm$  standard deviation of triplicate results. PARP, poly (ADP-ribose) polymerase 1; BRCA1, breast cancer 1; wt, wild type.

authors thank Dr Genze Shao (Department of Cell Biology, Peking University Health Science Center, Beijing, China) for providing the plasmid containing full-length *BRCA1*, and Dr Shuxing Zhang (Department of Experimental Therapeutics, Division of Cancer Medicine, MD Anderson Cancer Center, Houston, USA) for assistance with protein structure analysis.

## References

- Welsh PL, Owens KN and King MC: Insights into the functions of BRCA1 and BRCA2. *Trends Genet* 16: 69-74, 2000.
- Bergman A, Flodin A, Engwall Y, Arkblad EL, Berg K, Nordling M, Martinsson T, Wahlström J, Karlsson P and Nordling M: A high frequency of germline BRCA1/2 mutations in western Sweden detected with complementary screening techniques. *Fam Cancer* 4: 89-96, 2005.
- Zhang J, Pei R, Pang Z, Ouyang T, Li J, Wang T, Fan Z, Fan T, Lin B and Xie Y: Prevalence and characterization of BRCA1 and BRCA2 germline mutations in Chinese women with familial breast cancer. *Breast Cancer Res Treat* 132: 421-428, 2012.
- Mullan PB, Quinn JE and Harkin DP: The role of BRCA1 in transcriptional regulation and cell cycle control. *Oncogene* 25: 5854-5863, 2006.
- Baer R and Ludwig T: The BRCA1/BARD1 heterodimer, a tumor suppressor complex with ubiquitin E3 ligase activity. *Curr Opin Genet Dev* 12: 86-91, 2002.
- Moynahan ME and Jasin M: Mitotic homologous recombination maintains genomic stability and suppresses tumorigenesis. *Nat Rev Mol Cell Biol* 11: 196-207, 2010.
- Shakya R, Reid LJ, Reczek CR, Cole F, Egli D, Lin CS, deRoosij DG, Hirsch S, Ravi K, Hicks JB, *et al*: BRCA1 tumor suppression depends on BRCT phosphoprotein binding, but not its E3 ligase activity. *Science* 334: 525-528, 2011.
- Linger RJ and Kruk PA: BRCA1 16 years later: Risk-associated BRCA1 mutations and their functional implications. *FEBS J* 277: 3086-3096, 2010.
- Konishi H, Mohseni M, Tamaki A, Garay JP, Croessmann S, Karnan S, Ota A, Wong HY, Konishi Y, Karakas B, *et al*: Mutation of a single allele of the cancer susceptibility gene BRCA1 leads to genomic instability in human breast epithelial cells. *Proc Natl Acad Sci USA* 108: 17773-17778, 2011.
- Figge MA and Blankenship L: Missense mutations in the BRCT domain of BRCA-1 from high-risk women frequently perturb strongly hydrophobic amino acids conserved among mammals. *Cancer Epidemiol Biomarkers Prev* 13: 1037-1041, 2004.
- Easton DF, Deffenbaugh AM, Pruss D, Frye C, Wenstrup RJ, Allen-Brady K, Tavtigian SV, Monteiro AN, Iversen ES, Couch FJ and Goldgar DE: A systematic genetic assessment of 1,433 sequence variants of unknown clinical significance in the BRCA1 and BRCA2 breast cancer-predisposition genes. *Am J Hum Genet* 81: 873-883, 2007.
- Livak KJ and Schmittgen TD: Analysis of relative gene expression data using real-time quantitative PCR and the 2(-Delta Delta C(T)) method. *Methods* 25: 402-408, 2001.
- Foulkes WD and Shuen AY: In brief: BRCA1 and BRCA2. *J Pathol* 230: 347-349, 2013.
- Pohlreich P, Zikan M, Stribrna J, Kleibl Z, Janatova M, Kotlas J, Zidovska J, Novotny J, Petruzelka L, Szabo C and Matous B: High proportion of recurrent germline mutations in the BRCA1 gene in breast and ovarian cancer patients from the Prague area. *Breast Cancer Res* 7: R728-R736, 2005.
- Walsh T, Casadei S, Coats KH, Swisher E, Stray SM, Higgins J, Roach KC, Mandell J, Lee MK, Ciernikova S, *et al*: Spectrum of mutations in BRCA1, BRCA2, CHEK2, and TP53 in families at high risk of breast cancer. *JAMA* 295: 1379-1388, 2006.
- Kwong A, Ng EK, Tang EY, Wong CL, Law FB, Leung CP, Chan A, Cheung MT, To MY, Ma ES, *et al*: A novel de novo BRCA1 mutation in a Chinese woman with early onset breast cancer. *Fam Cancer* 10: 233-237, 2011.
- Neamatzadeh H, Shiryazdi SM and Kalantar SM: BRCA1 and BRCA2 mutations in Iranian breast cancer patients: A systematic review. *J Res Med Sci* 20: 284-293, 2015.
- Moynahan ME and Jasin M: Mitotic homologous recombination maintains genomic stability and suppresses tumorigenesis. *Nat Rev Mol Cell Biol* 11: 196-207, 2010.
- Huen MS, Sy SM and Chen J: BRCA1 and its toolbox for the maintenance of genome integrity. *Nat Rev Mol Cell Biol* 11: 138-148, 2010.
- Satoh MS and Lindahl T: Role of poly(ADP-ribose) formation in DNA repair. *Nature* 356: 356-358, 1992.
- Fong PC, Boss DS, Yap TA, Tutt A, Wu P, Mergui-Roelvink M, Mortimer P, Swaisland H, Lau A, O'Connor MJ, *et al*: Inhibition of poly(ADP-ribose) polymerase in tumors from BRCA mutation carriers. *N Engl J Med* 361: 123-134, 2009.
- Guha M: PARP inhibitors stumble in breast cancer. *Nat Biotechnol* 29: 373-374, 2011.
- Lee JM, Ledermann JA and Kohn EC: PARP Inhibitors for BRCA1/2 mutation-associated and BRCA-like malignancies. *Ann Oncol* 25: 32-40, 2014.
- Bixel K and Hays JL: Olaparib in the management of ovarian cancer. *Pharmgenomics Pers Med* 8: 127-135, 2015.