

Significance of age-associated quality of life in patients with stage IV breast cancer who underwent endocrine therapy in Japan

KOJI TAKADA¹, SHINICHIRO KASHIWAGI¹, YUKA ASANO¹, WATARU GOTO¹,
TAMAMI MORISAKI¹, KATSUYUKI TAKAHASHI², MASATSUNE SHIBUTANI³, RYOSUKE AMANO⁴,
TSUTOMU TAKASHIMA¹, SHUHEI TOMITA², KOSEI HIRAKAWA^{1,3} and MASAICHI OHIRA^{1,3}

Departments of ¹Breast and Endocrine Surgery, ²Pharmacology, ³Gastrointestinal Surgery and
⁴Hepato-Biliary-Pancreatic Surgery, Osaka City University Graduate School of Medicine, Osaka 545-8585, Japan

Received September 30, 2019; Accepted April 1, 2020

DOI: 10.3892/ol.2020.12041

Abstract. Currently, when determining treatment regimens, there is an emphasis on the quality of life (QOL), in addition to treatment efficacy. Especially in hormone receptor-positive breast cancer with distant metastases, unless death is imminent, a common first-line treatment is endocrine therapy, which has fewer side effects. In the present study, the differences in QOL were evaluated based on the age and prognostic indicators of 46 patients with hormone receptor-positive breast cancer with distant metastases (stage IV), who received first-line endocrine therapy at the Osaka City University Hospital (Osaka, Japan) between November 2007 and November 2016. QOL score before and after endocrine therapy was retrospectively analyzed, using the Quality of Life Questionnaire for Cancer Patients Treated with Anti-Cancer Drugs-Breast (QOL-ACD-B). There was no significant association between age and any of the clinicopathological features investigated. However, the QOL score of the elderly patient group was significantly higher compared with that of the younger group in the 'Satisfaction with treatment and coping with disease' subcategory ($P=0.008$). The QOL score of the younger age group in the same subcategory was significantly improved by the treatment ($P=0.013$). The patients that had an increased overall QOL score 3 months after treatment initiation had a significant extension of progression-free survival (PFS) rate compared to the patients with decreased or no change in QOL ($P=0.032$). In conclusion, psychological stress was more prominent in younger patients with stage IV breast cancer treated with hormonal therapy compared with elderly patients.

Importantly, improving QOL within the 3 months after treatment initiation could lead to longer PFS rate.

Introduction

Patients with cancer are subjected to numerous stressors, caused not only by the cancer itself but also by the subsequent treatment. These stressors include physical, mental and social factors that can collectively affect the patient's quality of life (QOL). The World Health Organization has included QOL as a fundamental concept in the definition of 'health', which is a state of complete physical, mental, and social well-being, and not merely the absence of disease or infirmity (1).

Currently, the impact on QOL is an important factor to consider, in addition to treatment efficacy, when determining treatment regimens. Previous studies in various types of cancer, such as colorectal and non-small cell lung cancer, have reported that QOL affects the prognosis of patients (2-5). Most of these studies included patients with cancer and distant metastases, who had received chemotherapy, and reported that chemotherapy-associated side effects caused deterioration in QOL. However, in hormone receptor-positive breast cancer with distant metastases, unless death is imminent, a common first-line treatment is endocrine therapy (6). Even though this treatment is not curative, it is chosen because of its positive impact on QOL (fewer treatment-associated side effects), as well as patient prognosis.

As the average life expectancy and the number of elderly breast cancer cases have increased, the evaluation of QOL in the elderly patients has become more important. In the present study, the differences in QOL were evaluated based on the age and prognostic indicators of patients with breast cancer and distant metastases (stage IV), who received first-line endocrine therapy.

Patients and methods

Study design. In this retrospective cohort study, patients treated with first-line endocrine therapy, after being diagnosed with hormone receptor-positive breast cancer with distant metastases at the Osaka City University Hospital between November 2007 and November 2016, were selected. The study was conducted at Osaka City University Graduate School of

Correspondence to: Dr Shinichiro Kashiwagi, Department of Breast and Endocrine Surgery, Osaka City University Graduate School of Medicine, 1-4-3 Asahi-machi, Abeno-ku, Osaka 545-8585, Japan
E-mail: spqv9ke9@view.ocn.ne.jp

Key words: quality of life, hormone receptor-positive breast cancer, distant metastases, prognosis, endocrine therapy

Medicine, according to the Reporting Recommendations for Tumor Marker Prognostic Studies (REMARK) guidelines and following a retrospectively written research, pathological evaluation, and statistical plan (7). The study protocol was approved by the Ethics Committee of Osaka City University (approval no. 926) and written informed consent was obtained from all patients.

Patient background. Forty-six patients were treated with first-line endocrine therapy after being diagnosed with hormone receptor-positive breast cancer [estrogen receptor (ER) and/or progesterone receptor (PgR)-positive] with distant metastases. All patients were pathologically diagnosed with breast cancer, and the expression levels of ER, PgR, human epidermal growth factor receptor 2 (HER2), and Ki67 were confirmed by immunostaining. Staging was evaluated by ultrasonography (US), computed tomography (CT), and bone scintigraphy. Patients with dementia were excluded. All patients were prescribed hormonal therapy drugs as outpatients. Patients were required to visit the hospital 3 months after treatment initiation for physical examinations, US and CT to determine the therapeutic effects, which were evaluated according to the Response Evaluation Criteria in Solid Tumors (8).

Study outcomes. To determine the objective response rate (ORR), 'responder' was defined as a patient showing a clinical partial response (cPR) or a clinical complete response (cCR); and 'non-responder' was defined as a patient with a clinical stable disease (cSD) or a clinical progressive disease (cPD). Progression-free survival (PFS) rate was defined as the period from the treatment initiation to the time when cPD was detected or to the date of death. Overall survival (OS) rate was defined as the period from the treatment initiation to the date of death or the censor date at the end of the study period, if still alive. All patients underwent follow-up physical examinations every 3 months, and US and CT every 6 months.

QOL evaluation. The widely accepted general QOL scale for cancer in Japan is based on the Quality of Life Questionnaire for Cancer Patients Treated with Anti-Cancer Drugs (QOL-ACD), developed by Kurihara *et al* (9) and supported by the Japanese Ministry of Health and Welfare (Tokyo, Japan). Specialized QOL scales for different cancer types have been developed. In the present study, the scale developed for breast cancer was used, known as QOL-ACD-B (10).

Briefly, QOL-ACD-B consists of 18 criteria, each of which is evaluated on a scale from 1 to 5 (1 being the worst and 5 being the best). The 18 criteria are grouped into 4 subcategories: 'Physical symptoms and pain' (6 criteria), 'Satisfaction with treatment and coping with disease' (4 criteria), 'Side effects of treatment' (4 criteria), and 'Dress, sexual aspect, other' (4 criteria) (Table SI). The scores of the entire QOL-ACD-B and each subcategory are calculated by subtracting 1 from the average of the criteria evaluated and multiplied by 25; thus, the minimum value is 0 and the maximum value is 100.

QOL at the time of diagnosis and 3 months after treatment was retrospectively evaluated. Changes in the overall QOL and per subcategory 3 months after treatment initiation were also calculated based on age. In addition, the association of

Table I. Clinicopathological characteristics of 46 patients with stage IV breast cancer receiving first-line endocrine therapy.

Parameters	Data
Age, years (range)	65 (40-89)
Tumor size, mm (range)	39.4 (11.8-146.3)
Skin infiltration, n (%)	
Negative	13 (28.3)
Positive	33 (71.7)
Lymph node metastasis, n (%)	
N0	7 (15.2)
N1	9 (19.6)
N2	13 (28.3)
N3	17 (37.0)
No. of metastatic organs, n (%)	
1	23 (50.0)
2	15 (32.6)
3	7 (15.2)
4	1 (2.2)
Site of metastasis, n (%)	
Lung	25 (54.3)
Bone	31 (67.4)
Liver	7 (15.2)
Brain	1 (2.2)
Skin	1 (2.2)
Distant lymph node	13 (28.3)
HER2, n (%)	
Negative	44 (95.7)
Positive	2 (4.3)
Ki67, n (%)	
Negative	28 (60.9)
Positive	18 (39.1)
Endocrine therapy, n (%)	
LH-RH agonist + TAM	6 (13.0)
TAM	1 (2.2)
LET	28 (60.9)
ANA	10 (21.7)
EXE	1 (2.2)
Combined radiation therapy, n (%)	
No	43 (93.5)
Yes	3 (6.5)
ORR 3 months after starting treatment, n (%)	
Non-responders	18 (39.1)
Responders	28 (60.9)
ORR, n (%)	
Non-responders	12 (26.1)
Responders	34 (73.9)
QOL-ACD-B before treatment (range)	90.63 (71.88-98.44)
Change in QOL (First 3 months after treatment initiation) (range)	3.13 (-21.88-14.06)
QOL-ACD-B (3 months after treatment initiation) (range)	93.75 (62.50-98.44)

HER, human epidermal growth factor receptor; LH-RH, luteinizing hormone-releasing hormone; TAM, tamoxifen; LET, letrozole; ANA, anastrozole; EXE, exemestane; ORR, objective response rate; QOL, quality of life; QOL-ACD-B, Questionnaire for Cancer Patients Treated with Anti-Cancer Drugs-Breast.

Table II. Association of clinicopathological features with age.

Parameters	Age, n (%)		P-value
	Younger (≤ 65 years) (n=23)	Elder (>65 years) (n=23)	
Tumor size, mm			
≤ 39.4	12 (52.2)	11 (47.8)	
>39.4	11 (47.8)	12 (52.2)	0.774
Skin infiltration			
Negative	5 (21.7)	8 (34.8)	
Positive	18 (78.3)	15 (65.2)	0.337
Lymph node metastasis			
Negative	4 (17.4)	3 (13.0)	
Positive	19 (82.6)	20 (87.0)	0.690
No. of metastatic organs			
≤ 2	19 (82.6)	19 (82.6)	
≥ 3	4 (17.4)	4 (17.4)	1.000
Lung metastasis			
Negative	8 (34.8)	13 (56.5)	
Positive	15 (65.2)	10 (43.5)	0.145
Bone metastasis			
Negative	10 (43.5)	5 (21.7)	
Positive	13 (56.5)	18 (78.3)	0.121
Liver metastasis			
Negative	19 (82.6)	20 (87.0)	
Positive	4 (17.4)	3 (13.0)	0.690
Distant lymph node metastasis			
Negative	19 (82.6)	14 (60.9)	
Positive	4 (17.4)	9 (39.1)	0.106
Ki67			
Negative	13 (56.5)	15 (65.2)	
Positive	10 (43.5)	8 (34.8)	0.556
Combined radiation therapy			
No	20 (87.0)	23 (100.0)	
Yes	3 (13.0)	0 (0.0)	0.076
ORR (3 months after treatment initiation)			
Non-responders	8 (34.8)	10 (43.5)	
Responders	15 (65.2)	13 (56.5)	0.556
ORR			
Non-responders	6 (26.1)	6 (26.1)	
Responders	17 (73.9)	17 (73.9)	1.000

ORR, overall response rate.

QOL scores with patient clinicopathological factors and effect on prognosis were analyzed.

Statistical analysis. Statistical analyses were performed using the JMP software package version 10 (SAS Institute, Inc.). Student's t-test was used for the comparison of the score distributions. The associations between variables were examined using the χ^2 test. Regarding age, the patients were categorized into the elderly and the younger age group using

the median age (65 years) as the cut-off value for stratification. The Kaplan-Meier method was used to determine PFS rate and OS rate, and the log-rank test was used to compare the survival curves. Hazard ratios (HRs) and 95% confidence intervals (CIs) were calculated using the Cox proportional-hazards model. Univariate and multivariate analyses were performed using the Cox regression model. $P < 0.05$ was considered to indicate a statistically significant difference.

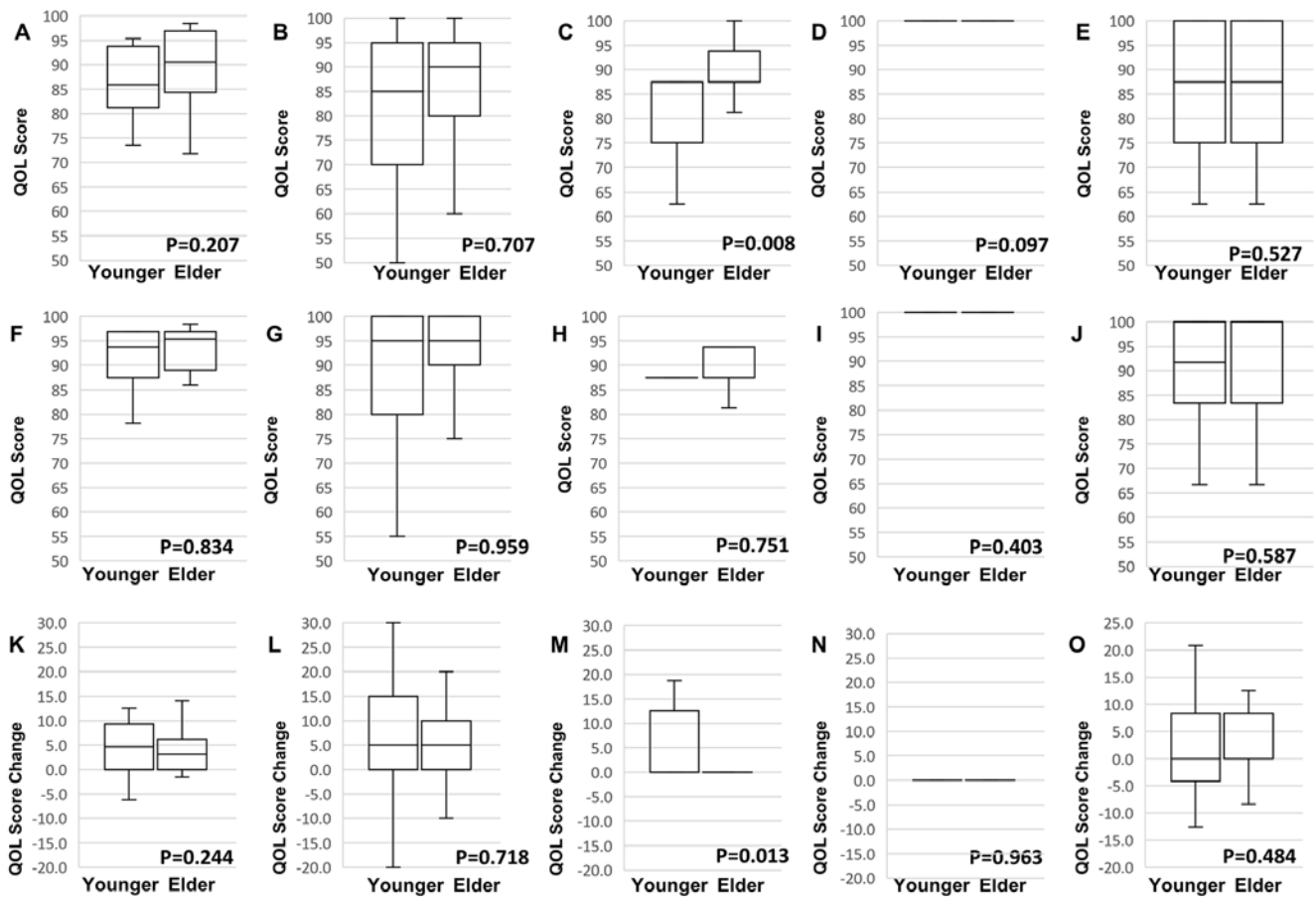


Figure 1. Comparison of overall QOL score and subscales before treatment between the younger and the elder patients using box-plot diagrams: (A) Whole QOL, (B) 'Physical symptoms and pain', (C) 'Satisfaction to treatment and coping with disease', (D) 'Side effects of treatment', (E) 'Dress, sexual aspect, other'. Comparison of overall QOL score and subscales at 3 months after treatment initiation between the younger and the elder using box-plot diagrams: (F) Whole QOL, (G) 'Physical symptoms and pain', (H) 'Satisfaction with treatment and coping with disease', (I) 'Side effects of treatment', (J) 'Dress, sexual aspect, other'. Comparison of change in overall QOL score and subscales during 3 months of treatment between the younger and the elder using box-plot diagrams: (K) Whole QOL, (L) 'Physical symptoms and pain', (M) 'Satisfaction with treatment and coping with disease', (N) 'Side effects of treatment', (O) 'Dress, sexual aspect, other'. QOL, quality of life.

Results

Clinicopathological features. The clinicopathological features of 46 patients who were diagnosed with hormone receptor-positive breast cancer with distant metastases and treated with first-line endocrine therapy are detailed in Table I. The median age at treatment initiation was 65 years (range, 40-89 years), and tumor diameter was 39.4 mm (range, 11.8-146.3 mm). The median overall follow-up time since treatment initiation was 1,272 days (range, 120-3,271 days).

Thirty-three patients (71.7%) had skin infiltration and 39 patients (84.8%) were diagnosed with lymph node metastases. Overall, 23 patients (50.0%) had distant metastasis to a single organ, whereas the remaining 23 patients (50.0%) had distant metastases to multiple organs. The sites of metastasis included the lungs (25 patients; 54.3%), bones (31 patients; 67.4%), liver (7 patients; 15.2%), brain (1 patient; 2.2%), skin (1 patient; 2.2%), and distant lymph nodes (13 patients; 28.3%). While tamoxifen in conjunction with luteinizing hormone-releasing hormone (LH-RH) agonist was offered to 6 patients (13.0%), single-agent treatment was prescribed with the following drugs: Tamoxifen (1 patient; 2.2%), letrozole (28 patients; 60.9%), anastrozole

(10 patients; 21.7%), and exemestane (1 patient; 2.2%). In all cases with bone metastases, zoledronic acid or denosumab was used in combination with endocrine therapy; 3 of these patients received the drugs in combination with radiation therapy. Two cases (4.3%) that were HER2-positive received no anti-HER2 therapy. None of the cases developed cCR; however, 28 patients (60.9%) showed cPR 3 months after treatment initiation, and by the end of the study period, a total of 34 patients (73.9%) showed cPR. The median QOL score prior to treatment was 90.63 (range, 71.88-98.44), and 3 months after treatment initiation was 93.75 (range, 62.50-98.44). Overall, 13 cases of mortality were attributed to breast cancer, and no deaths due to other causes were noted.

Differences in clinicopathological features and QOL based on age. There was no significant association between age and any of the clinicopathological features investigated (Table II). Additionally, there was no significant difference in overall QOL prior to treatment based on age (Fig. 1A). However, QOL score was significantly higher among the elderly in the 'Satisfaction with treatment and coping with disease' subcategory (P=0.008; Fig. 1C). After 3 months of treatment, no

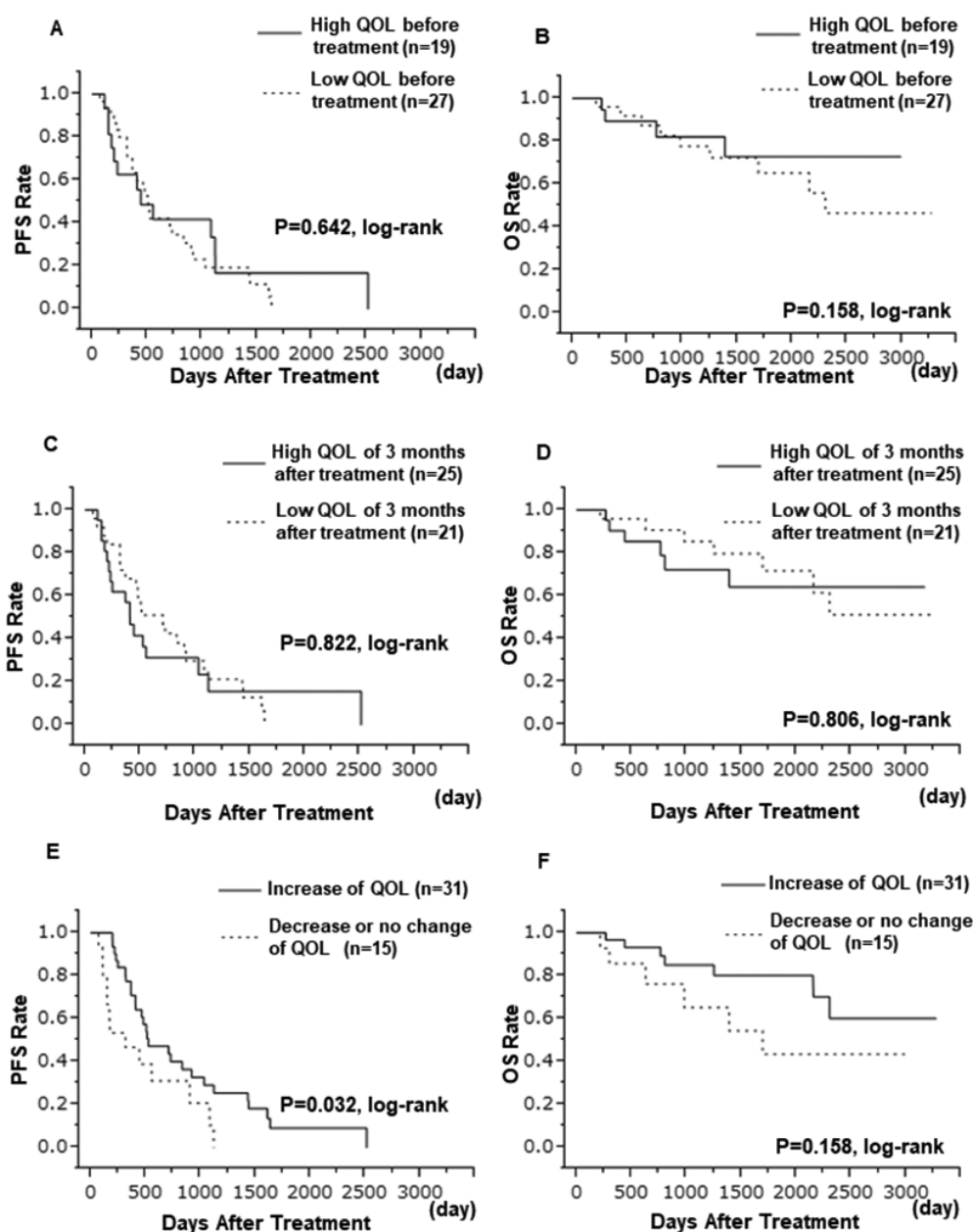


Figure 2. Kaplan-Meier survival curves based on QOL score before treatment: (A) PFS, (B) OS; based on QOL score at 3 months after treatment initiation (C) PFS, (D) OS; based on the change in QOL score during 3 months of treatment: (E) PFS, (F) OS. QOL, quality of life; PFS, progression-free survival; OS, overall survival.

association was found between age and overall QOL or any of the subcategories (Fig. 1F-J). However, QOL score in the ‘Satisfaction with treatment and coping with disease’ subcategory was significantly improved by treatment in the younger age group ($P=0.013$; Fig. 1M).

Association of QOL with survival outcomes. Patients were divided into high and low QOL groups, before and at 3 months after treatment initiation; the median QOL score at each time point was used as the cut-off value. Nineteen patients (41.3%) had high QOL score before treatment, whereas 27 patients (58.7%) had low QOL score. The pre-treatment QOL score had no significant impact on PFS rate ($P=0.642$) and OS rate ($P=0.158$; Fig. 2A and B). Three months after treatment initiation, 21 patients (45.7%) and 25 patients (54.3%) had low and

high QOL score, respectively. Again, no significant impact of QOL was observed on PFS rate ($P=0.822$) and OS rate ($P=0.806$; Fig. 2C and D).

The QOL score increased for 31 patients (67.4%) during the 3 months following treatment initiation; these patients were referred to as the ‘increased QOL group’. Conversely, the QOL score decreased or did not change for 15 patients (32.6%); these patients were referred to as the ‘decreased QOL group’. Tumor size was significantly larger and lymph node metastases were more frequently observed in the ‘increased QOL group’ when compared with the ‘decreased QOL group’ ($P=0.004$ and $P=0.017$, respectively). Furthermore, in the ‘increased QOL group’ the ORR was higher 3 months after treatment initiation ($P=0.007$), as well as during the treatment period ($P=0.003$). The ‘increased QOL group’ had a

Table III. Association of clinicopathological features with change in QOL during treatment.

Parameters	Change in QOL during treatment, n (%)		P-value
	Decrease/no change (n=15)	Increase (n=31)	
Age			
≤65 years	6 (40.0)	17 (54.8)	0.344
>65 years	9 (60.0)	14 (45.2)	
Tumor size, mm			
≤39.4	12 (80.0)	11 (35.5)	0.004
>39.4	3 (20.0)	20 (64.5)	
Skin infiltration			
Negative	6 (40.0)	7 (22.6)	0.228
Positive	9 (60.0)	24 (77.4)	
Lymph node metastasis			
Negative	5 (33.3)	2 (6.5)	0.017
Positive	10 (66.7)	29 (93.5)	
No. of metastatic organs			
≤2	12 (80.0)	26 (83.9)	0.752
≥3	3 (20.0)	5 (16.1)	
Lung metastasis			
Negative	8 (53.3)	13 (41.9)	0.478
Positive	7 (46.7)	18 (58.1)	
Bone metastasis			
Negative	2 (13.3)	13 (41.9)	0.054
Positive	13 (86.7)	18 (58.1)	
Liver metastasis			
Negative	12 (80.0)	27 (87.1)	0.540
Positive	3 (20.0)	4 (12.9)	
Distant lymph node metastasis			
Negative	11 (73.3)	22 (71.0)	0.871
Positive	4 (26.7)	9 (29.0)	
Ki67			
Negative	7 (46.7)	21 (67.7)	0.177
Positive	8 (53.3)	10 (32.3)	
Combined radiation therapy			
No	14 (93.3)	29 (93.5)	0.979
Yes	1 (6.7)	2 (6.5)	
ORR (3 months after treatment initiation)			
Non-responders	10 (66.7)	8 (25.8)	0.007
Responders	5 (33.3)	23 (74.2)	
ORR			
Non-responders	8 (53.3)	4 (12.9)	0.003
Responders	7 (46.7)	27 (87.1)	
QOL-ACD-B before treatment			
Low	5 (33.3)	22 (71.0)	0.015
High	10 (66.7)	9 (29.0)	
QOL-ACD-B (3 months after treatment initiation)			
Low	7 (46.7)	18 (58.1)	0.478
High	8 (53.3)	13 (41.9)	

QOL, quality of life; ORR, overall response rate; QOL-ACD-B, Questionnaire for Cancer Patients Treated with Anticancer Drugs-Breast.

Table IV. Univariate and multivariate analysis of PFS rate and OS rate of 46 patients with stage IV breast cancer under endocrine therapy.

Parameter	Items	Univariate analysis			Multivariate analysis		
		HR	95% CI	P-value	HR	95% CI	P-value
PFS rate							
Age at treatment	≤65/>65 years	1.021	0.540-1.926	0.948			
Tumor size	≤39.4/>39.4 mm	0.911	0.478-1.748	0.776			
Skin infiltration	Negative/positive	0.618	0.314-1.294	0.194			
HER2	Negative/positive	3.335	0.526-11.787	0.169			
Ki67	Negative/positive	1.832	0.923-3.537	0.082	1.220	0.524-2.652	0.631
Lymph node metastasis	Negative/positive	0.781	0.347-2.088	0.592			
No. of metastatic organs	≤2/≥3	1.496	0.634-3.126	0.334			
Lung metastasis	Negative/positive	0.533	0.277-1.024	0.059	0.523	0.263-1.042	0.065
Bone metastasis	Negative/positive	1.722	0.878-3.582	0.116			
Liver metastasis	Negative/positive	3.624	1.421-8.156	0.009	2.636	0.882-7.552	0.081
Distant lymph node metastasis	Negative/positive	1.445	0.718-2.768	0.291			
Combined radiation therapy	No/yes	1.852	0.295-6.400	0.446			
QOL-ACD-B before treatment	Low/high	0.855	0.431-1.631	0.640			
QOL-ACD-B (3 months after treatment initiation)	Low/high	1.077	0.555-2.040	0.823			
Change in QOL during treatment	Decrease or no change/increase	0.476	0.240-0.979	0.044	0.686	0.303-1.577	0.369
ORR	Non-responders/responders	0.261	0.128-0.555	0.001	0.328	0.141-0.789	0.014
OS rate							
Age at treatment	≤65/>65 years	1.027	0.329-3.112	0.962			
Tumor size	≤39.4/>39.4 mm	1.133	0.376-3.527	0.822			
Skin infiltration	Negative/positive	1.202	0.367-5.369	0.776			
HER2	Negative/positive	-	-	0.124			
Ki67	Negative/positive	0.832	0.225-2.557	0.757			
Lymph node metastasis	Negative/positive	2.729	0.532-49.780	0.269			
No. of metastatic organs	≤2/≥3	3.206	0.959-9.745	0.058	3.038	0.747-11.841	0.116
Lung metastasis	Negative/positive	0.646	0.210-2.045	0.445			
Bone metastasis	Negative/positive	1.965	0.621-7.440	0.257			
Liver metastasis	Negative/positive	4.115	0.889-14.540	0.067	1.247	0.178-6.601	0.811
Distant lymph node metastasis	Negative/positive	1.239	0.373-3.724	0.711			
Combined radiation therapy	No/yes	2.008	0.108-11.022	0.549			
QOL-ACD-B before treatment	Low/high	0.650	0.176-1.997	0.462			
QOL-ACD-B (3 months after treatment initiation)	Low/high	1.146	0.368-3.459	0.872			
Change in QOL during treatment	Decrease or no change/increase	0.464	0.154-1.443	0.177			
ORR	Non-responders/responders	0.257	0.084-0.808	0.022	0.273	0.071-1.079	0.063

PFS, progression-free survival; OS, overall survival; HR, hazard ratio; CI, confidence interval; HER, human epidermal growth factor receptor; QOL, quality of life; QOL-ACD-B, Questionnaire for Cancer Patients Treated with Anti-Cancer Drugs-Breast.

significantly lower pre-treatment QOL-ACD-B score than the 'decreased QOL group' (P=0.015; Table III).

The 'increased QOL group' had a significant PFS rate extension when compared with the 'decreased QOL group' (P=0.032; Fig. 2E). However, there was no significant difference in OS rate between the two groups (P=0.158; Fig. 2F). In the univariate analysis of PFS rate, the 'increased QOL group' was found to have a significantly longer PFS rate (HR=0.476; 95% CI, 0.240-0.979; P=0.044). However, this association was not found

to be statistically significant in multivariate analysis (HR=0.686; 95% CI, 0.303-1.577; P=0.369). In univariate and multivariate analyses of OS rate, neither QOL nor change in QOL was significantly associated with longer OS rate (Table IV).

Discussion

With the aging of society in recent years the number of elderly patients diagnosed with breast cancer has increased. In addition,

the clinical features of breast cancer in the elderly differ from those in younger patients. For example, some studies have reported higher incidence of hormone-positive breast cancer, larger tumor size, fewer cases of lymph node metastases, and more frequent skin infiltrations in the elderly rather than the younger patients with breast cancer (11-14). As previously reported by our group, large tumors, lymph node metastases, and skin infiltrations resulted in deterioration of QOL in patients with breast cancer. In the present study, the QOL was analyzed in patients with advanced breast cancer undergoing hormonal therapy, and the results revealed no significant difference, based on any clinical features, including age.

Various studies have been conducted on the changes in the QOL during chemotherapy, with the majority reporting that QOL decreased within a few months following treatment (15-18). In the present study, it was shown that adverse reactions greatly decreased QOL scores in patients undergoing preoperative chemotherapy for breast cancer. There are also reports that the magnitude of the side effects varies depending on age (19-21). However, since this study included patients who underwent endocrine therapy, only a few patients had treatment-associated side effects. Therefore, a statistically significant improvement in QOL, due to the treatment, could be observed in most patients.

Although some studies have reported that chemotherapy led to mild deterioration of QOL in the elderly patients, the results of the present study are in accordance with numerous reports (including a meta-analysis of 10 studies) that have shown that age was not a predictor of QOL (17,18,22-24). However, there was a significant age-based difference in the QOL score in the subcategory of 'Satisfaction with treatment and coping with disease'. Young subjects were more significantly affected by mental stress following diagnosis; however, their recovery thereafter was good, and they had the same QOL score as the elderly patients at 3 months after treatment initiation. These findings are similar to a previous study, in which little change was noted in the emotional status of elderly patients (17).

While QOL improved for a number of patients, it worsened for some others, and differences in clinical characteristics between these patient groups were observed. Patients with improved QOL had significantly larger tumor size and higher incidence of lymph node metastases, whereas no significant differences were observed in distant metastatic sites or the number of metastatic organs between the two groups. Additionally, those with improved QOL had significantly lower QOL prior to treatment initiation. Presumably, this is because the symptoms arising from a progressive primary breast cancer that decrease patient QOL score are alleviated by the endocrine treatment, leading to an improved QOL. Similar to previous reports, the patients of the present study with liver metastases or multiple organ metastases did not have a significantly worse prognosis, whereas patients who responded to endocrine therapy had a significantly better prognosis (25-27). Additionally, this study showed that the change in QOL during the 3 months after treatment initiation affected PFS rate. This is important since, according to other studies, the survival is prolonged by further improvements in QOL as a result of treatment (15,28).

One of the limitations of the present study is the small sample size. Therefore, the median age of the cohort was used as the cut-off to create patient subgroups suitable for age-based comparisons. A small cohort is likely to be affected by various

confounding factors. As shown in Table III, changes in QOL were significantly associated with tumor size, axillary lymph node metastasis and ORR. In particular, ORR had strong effects on both PFS rate and OS rate. In breast cancer with distant metastasis, it is clear that the response to treatment and the status of distant metastasis affect prognosis, and similar results are shown in this study. Changes in QOL score were found to have no significant effect on PFS rate in multivariate analysis, probably due to its association with ORR. However, ORR and QOL changes are not completely consistent. Furthermore, the QOL score may not be accurate, since it is a subjective evaluation. It is obvious that the QOL during treatment is influenced by the social position, family environment, and financial aspect. An examination of these parameters would facilitate comparisons with patients from other countries. Furthermore, QOL has been shown to change with treatment and to be affected by clinical factors. In the future, it would be important to consider factors, other than clinicopathological variables, and perform high-quality analysis based on them.

Taken together, psychological stress was more prominent in young patients with hormone receptor-positive breast cancer and distant metastases, who were treated with first-line endocrine therapy compared with elderly patients. Moreover, improving QOL within 3 months following treatment initiation could lead to longer PFS rate. Breast cancer with distant metastases is considered difficult to cure; hence the patient's QOL becomes more important when deciding upon a treatment plan. Young patients experience more psychological trauma during the diagnosis, and thus, the improvement of the patient's QOL should be an important consideration, since it may also have an impact on prognosis. Interestingly, some studies, albeit their small sample size, have reported that psychological support improved patient prognosis (29-31). The present study supports the importance of psychological care of patients, not only for the improvement of their QOL, but also for the improvement in prognosis.

Acknowledgements

The authors would like to thank Miss Yayoi Matsukiyo and Miss Tomomi Okawa (Data Manager, Department of Breast and Endocrine Surgery, Osaka City University Graduate School of Medicine) for the helpful advice regarding data management.

Funding

The study was supported by grants from the Japan Society for the Promotion of Science (KAKENHI) (grant nos. 19K18067, 26461957 and 17K10559) to SK. The funding agency had no role in the design, collection, analysis, interpretation of data or writing of this manuscript.

Availability of data and materials

The datasets used and/or analyzed during the present study are available from the corresponding author on reasonable request.

Authors' contributions

KoT participated in the design of the study and drafted the manuscript. SK participated in the design of the study and

editing of the manuscript. YA, WG, TM, MS, RA and TT helped with study data collection and manuscript preparation. KaT and ST created T1-4 by aggregating the data, produced the figures and participated in the design of the study. KH and MO conceived the study, participated in the study design and coordination, and assisted with the drafting of the manuscript. All authors read and approved the final version of the manuscript.

Ethics approval and consent to participate

This study was conducted at Osaka City University Graduate School of Medicine in Osaka, Japan, according to the REMARK guidelines, following a retrospectively written research, pathological evaluation, and statistical plan (10). The study protocol was approved by the Ethics Committee of Osaka City University (approval no. 926). The research conformed to the provisions of the Declaration of Helsinki, 2013. All patients were informed of the investigational nature of the study and provided written, informed consent.

Patient consent for publication

Not applicable.

Competing interest

The authors declare that they have no competing interests.

References

- Saracci R: The World Health Organisation needs to reconsider its definition of health. *BMJ* 314: 1409-1410, 1997.
- Maisey NR, Norman A, Watson M, Allen MJ, Hill ME and Cunningham D: Baseline quality of life predicts survival in patients with advanced colorectal cancer. *Eur J Cancer* 38: 1351-1357, 2002.
- Kaasa S, Mastekaasa A and Lund E: Prognostic factors for patients with inoperable non-small cell lung cancer, limited disease. The importance of patients' subjective experience of disease and psychosocial well-being. *Radiother Oncol* 15: 235-242, 1989.
- Gotay CC, Kawamoto CT, Bottomley A and Efficace F: The prognostic significance of patient-reported outcomes in cancer clinical trials. *J Clin Oncol* 26: 1355-1363, 2008.
- Dancey J, Zee B, Osoba D, Whitehead M, Lu F, Kaizer L, Latreille J and Pater JL: Quality of life scores: An independent prognostic variable in a general population of cancer patients receiving chemotherapy. The National Cancer Institute of Canada Clinical Trials Group. *Qual Life Res* 6: 151-158, 1997.
- Hortobagyi GN: Treatment of breast cancer. *N Engl J Med* 339: 974-984, 1998.
- McShane LM, Altman DG, Sauerbrei W, Taube SE, Gion M and Clark GM: Statistics Subcommittee of the NCI-EORTC Working Group on Cancer Diagnostics: Reporting recommendations for tumor marker prognostic studies (REMARK). *J Natl Cancer Inst* 97: 1180-1184, 2005.
- Eisenhauer EA, Therasse P, Bogaerts J, Schwartz LH, Sargent D, Ford R, Dancey J, Arbuck S, Gwyther S, Mooney M, *et al*: New response evaluation criteria in solid tumours: Revised RECIST guideline (version 1.1). *Eur J Cancer* 45: 228-247, 2009.
- Kurihara M, Shimizu H, Tsuboi K, Kobayashi K, Murakami M, Eguchi K and Shimoizuma K: Development of quality of life questionnaire in Japan: Quality of life assessment of cancer patients receiving chemotherapy. *Psychooncology* 8: 355-363, 1999.
- Otsuka S, Watanabe N, Sasaki Y and Shimojima R: Postoperative courses of breast reconstruction using inferior adipofascial tissue repair. *Breast Cancer* 22: 570-577, 2015.
- Crivellari D, Aapro M, Leonard R, von Minckwitz G, Brain E, Goldhirsch A, Veronesi A and Muss H: Breast cancer in the elderly. *J Clin Oncol* 25: 1882-1890, 2007.
- Louwman WJ, Vulto JC, Verhoeven RH, Nieuwenhuijzen GA, Coebergh JW and Voogd AC: Clinical epidemiology of breast cancer in the elderly. *Eur J Cancer* 43: 2242-2252, 2007.
- Gennari R, Curigliano G, Rotmensz N, Robertson C, Colleoni M, Zurrada S, Nolè F, de Braud F, Orlando L, Leonardi MC, *et al*: Breast carcinoma in elderly women: Features of disease presentation, choice of local and systemic treatments compared with younger postmenopausal patients. *Cancer* 101: 1302-1310, 2004.
- Wildiers H, Kunkler I, Biganzoli L, Fracheboud J, Vlastos G, Bernard-Marty C, Hurria A, Extermann M, Girre V, Brain E, *et al*: Management of breast cancer in elderly individuals: Recommendations of the International Society of Geriatric Oncology. *Lancet Oncol* 8: 1101-1115, 2007.
- Shimoizuma K, Sonoo H, Ichihara K and Tanaka K: The prognostic value of quality-of-life scores: Preliminary results of an analysis of patients with breast cancer. *Surg Today* 30: 255-261, 2000.
- Schou I, Ekeberg O, Sandvik L, Hjermland MJ and Ruland CM: Multiple predictors of health-related quality of life in early stage breast cancer. Data from a year follow-up study compared with the general population. *Qual Life Res* 14: 1813-1823, 2005.
- Watters JM, Yau JC, O'Rourke K, Tomiak E and Gertler SZ: Functional status is well maintained in older women during adjuvant chemotherapy for breast cancer. *Ann Oncol* 14: 1744-1750, 2003.
- Akin S, Can G, Durna Z and Aydinler A: The quality of life and self-efficacy of Turkish breast cancer patients undergoing chemotherapy. *Eur J Oncol Nurs* 12: 449-456, 2008.
- Hurwitz N: Predisposing factors in adverse reactions to drugs. *Br Med J* 1: 536-539, 1969.
- Cassidy J, Twelves C, Van Cutsem E, Hoff P, Bajetta E, Boyer M, Bugat R, Burger U, Garin A, Graeven U, *et al*: First-line oral capecitabine therapy in metastatic colorectal cancer: A favorable safety profile compared with intravenous 5-fluorouracil/leucovorin. *Ann Oncol* 13: 566-575, 2002.
- Levy M, Kewitz H, Altwein W, Hillebrand J and Eliakim M: Hospital admissions due to adverse drug reactions: A comparative study from Jerusalem and Berlin. *Eur J Clin Pharmacol* 17: 25-31, 1980.
- Hurria A, Hurria A, Zuckerman E, Panageas KS, Fournier M, D'Andrea G, Dang C, Moasser M, Robson M, Seidman A, *et al*: A prospective, longitudinal study of the functional status and quality of life of older patients with breast cancer receiving adjuvant chemotherapy. *J Am Geriatr Soc* 54: 1119-1124, 2006.
- Mols F, Vingerhoets AJ, Coebergh JW and van de Poll-Franse LV: Quality of life among long-term breast cancer survivors: A systematic review. *Eur J Cancer* 41: 2613-2619, 2005.
- Chee Chean D, Kuo Zang W, Lim M and Zulkefle N: Health Related Quality of Life (HRQoL) among breast cancer patients receiving chemotherapy in Hospital Melaka: Single Centre Experience. *Asian Pac J Cancer Prev* 17: 5121-5126, 2016.
- Llombart-Cussac A, Pivot X, Biganzoli L, Cortes-Funes H, Pritchard KI, Pierga JY, Smith I, Thomssen C, Srock S, Sampayo M and Cortes J: A prognostic factor index for overall survival in patients receiving first-line chemotherapy for HER2-negative advanced breast cancer: An analysis of the ATHENA trial. *Breast* 23: 656-662, 2014.
- Dunphy FR, Spitzer G, Fornoff JE, Yau JC, Huan SD, Dicke KA, Buzdar AU and Hortobagyi GN: Factors predicting long-term survival for metastatic breast cancer patients treated with high-dose chemotherapy and bone marrow support. *Cancer* 73: 2157-2167, 1994.
- Tsuji W, Teramukai S, Ueno M, Toi M and Inamoto T: Prognostic factors for survival after first recurrence in breast cancer: A retrospective analysis of 252 recurrent cases at a single institution. *Breast Cancer* 21: 86-95, 2014.
- Coates A, Gebbski V, Signorini D, Murray P, McNeil D, Byrne M and Forbes JF: Prognostic value of quality-of-life scores during chemotherapy for advanced breast cancer. Australian New Zealand Breast Cancer Trials Group. *J Clin Oncol* 10: 1833-1838, 1992.
- Spiegel D, Bloom JR, Kraemer HC and Gotthel E: Effect of psychosocial treatment on survival of patients with metastatic breast cancer. *Lancet* 2: 888-891, 1989.
- Spiegel D, Sephton SE, Terr AI and Stites DP: Effects of psychosocial treatment in prolonging cancer survival may be mediated by neuroimmune pathways. *Ann N Y Acad Sci* 840: 674-683, 1998.
- Kuchler T, Bestmann B, Rappat S, Henne-Bruns D and Wood-Dauphinee S: Impact of psychotherapeutic support for patients with gastrointestinal cancer undergoing surgery: 10-year survival results of a randomized trial. *J Clin Oncol* 25: 2702-2708, 2007.