

## CORRIGENDUM

DOI: 10.3892/or.2018.6933

### High expression of RELM- $\alpha$ correlates with poor prognosis and promotes angiogenesis in gastric cancer

PING CHEN, DESHOU ZHAO, WEIYI WANG, YONGPING ZHANG, YAOZONG YUAN, LIFU WANG and YUNLIN WU

Oncol Rep 34: 77-86, 2015; DOI: 10.3892/or.2015.3943

Following the publication of the above article, the authors have drawn to our attention that, in Fig. 6 on p. 83, the 'Ad5/F35 vector' and 'Control' experiment data panels for the MKN45 cell line were inadvertently derived from the same original source. The Ad5/F35-vector and Control groups were both negative controls; Ad5/F35-vector was the empty vector condition, whereas 'Control' represented the 'no vector' experiment. A representative image belonging to the Control MKN45 experiment was inadvertently used to show the 'Ad5-F35-vector' experiment. An examination of the original data files confirmed that the data shown in the histogram for Fig. 6 were correct; therefore, this error in terms of figure placement did not influence the statistical analysis shown for the invasive ability of the cells.

A corrected version of Fig. 6, containing correct representative data for the 'Ad5-F35-vector' experiment, is shown opposite. This error did not affect the results or the conclusions reported in this study. The authors sincerely apologize for this mistake, and regret any inconvenience this mistake has caused.



This work is licensed under a Creative Commons Attribution 4.0 International (CC BY 4.0) License.

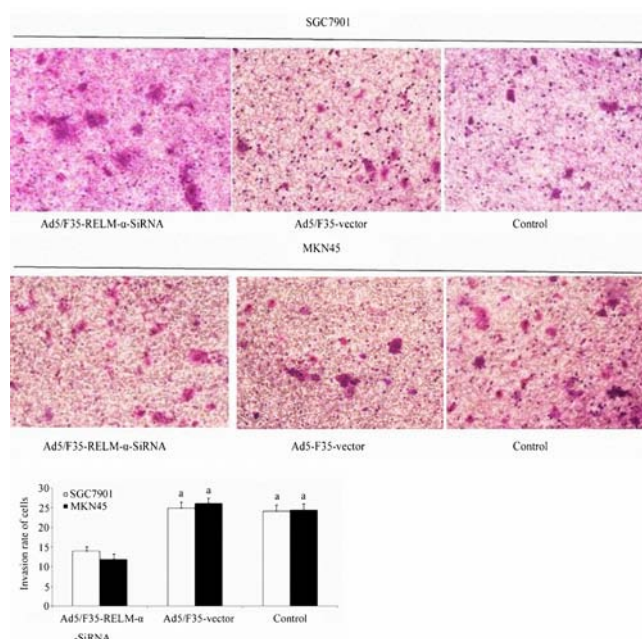


Figure 6. Invasiveness of the SGC7901 and MKN45 cells was determined by Transwell chamber assay. <sup>a</sup>P<0.01 vs. the Ad5/F35-RELM- $\alpha$ -siRNA-treated group. RELM- $\alpha$ , resistin-like molecule- $\alpha$ .