

CORRIGENDUM

DOI: 10.3892/or.2019.7111

Metformin facilitates BG45-induced apoptosis via an anti-Warburg effect in cholangiocarcinoma cells

DEHUA TANG, LEI XU, MINGMING ZHANG, ROBERT GREGORY DORFMAN, YIDA PAN, QIAN ZHOU, LIXING ZHOU, YUMING WANG, YANG LI, YUYAO YIN, LEI WANG and XIAOPING ZOU

Oncol Rep 39: 1957-1965, 2018; DOI: 10.3892/or.2018.6275

Following the publication of the article, the authors have realized that Fig. 1A contained an error (essentially, the scale bars were drawn incorrectly).

The corrected version of Fig. 1 is shown below, also including a modified version of the legend for Fig. 1A. Note that these revisions do not affect the overall conclusions reported in the paper. The authors apologize to the Editor of *Oncology Reports* and to the readership for any inconvenience caused.

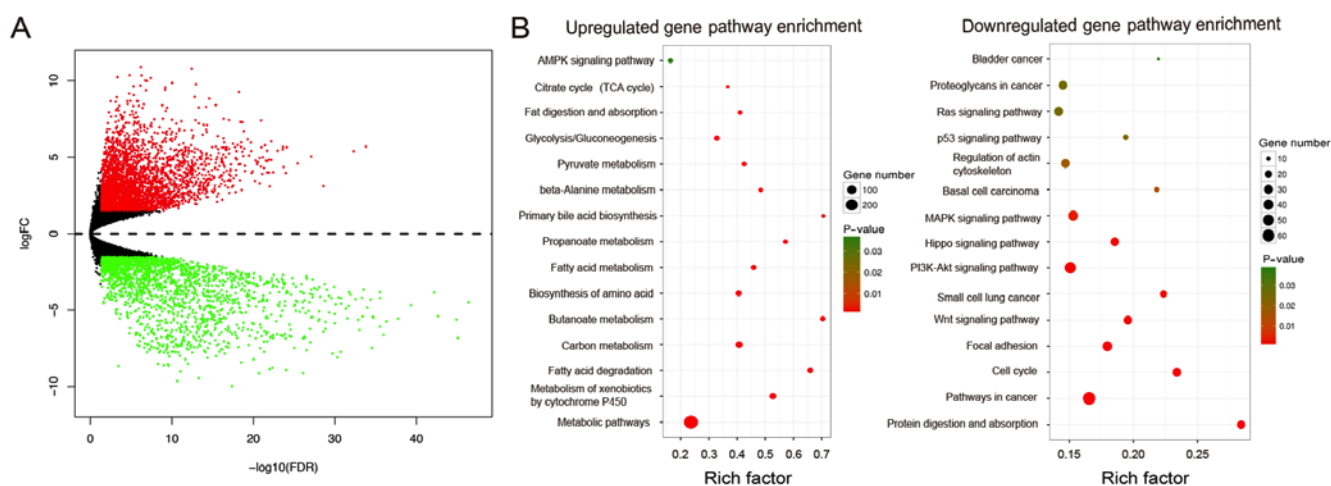


Figure 1. (A) Heat map of differentially expressed genes (DEGs) in cholangiocarcinoma (CCA) and paired normal liver samples. DEGs with a fold change (FC) >1.5 are shown in red; DEGs with FC ≤1.5 are in green (P<0.01), and the false discovery rate (FDR) was <0.05. (B) KEGG annotation pathways of high- and low-expression genes in CCA.



This work is licensed under a Creative Commons Attribution 4.0 International (CC BY 4.0) License.