

CORRIGENDUM

DOI: 10.3892/or.2020.7503

In vitro and *in vivo* activities of an antitumor peptide HM-3: A special dose-efficacy relationship on an HCT-116 xenograft model in nude mice

SITELBANAT YASSIN, JIALIANG HU, HANMEI XU, CE LI And SARRA SETRERRAHMANE

Oncol Rep 36: 2951-2959, 2016; DOI: 10.3892/or.2016.5077

After the publication of the article, the authors have realized that Figs. 3 and 7 in their paper were published with errors; in the first instance, regarding Fig. 3, panels 'C' and 'D' contained partially overlapping data and were derived from the same original source, where these images were intended to show the effect of 2 ng/ml sunitinib and 2 μ g/ml HM-3, respectively, on cell migration. Likewise, in Fig. 7, panels 'C' and 'D' also contained partially overlapping data derived from the same original source, even though these images were intended to show representative images for sections of tumor tissue from the HM-3 (3 mg/kg) and HM-3 (48 mg/kg) treatment groups. These errors arose inadvertently, as a consequence of the authors' mishandling of their data.

The revised versions of Figs. 3 and 7, featuring the corrected data panels for panels 'C' and 'D' in both Figures, are shown opposite. The revised data shown for these Figures do not affect the overall conclusions reported in the paper. The authors apologize to the Editor of *Oncology Reports* and to the readership for any inconvenience caused.



This work is licensed under a Creative Commons Attribution 4.0 International (CC BY 4.0) License.

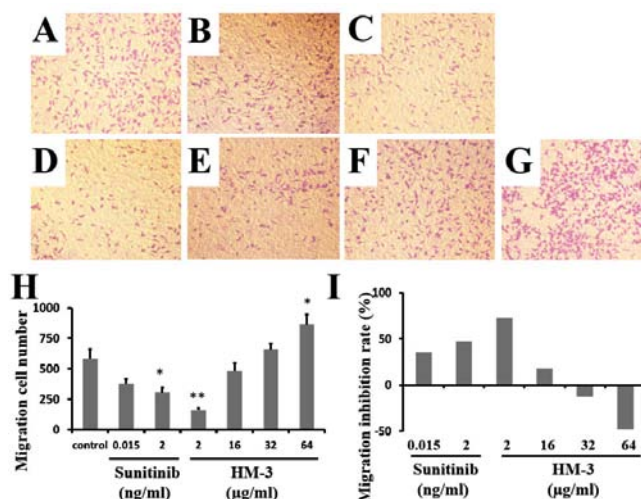


Figure 3. Inhibitory effect of HM-3 and sunitinib on the migration of HCT-116 cells. (A-G) Representative images for migrated cells in each group. G1, control; G2, sunitinib 0.015 ng/ml; G3, sunitinib 2 ng/ml; G4, HM-3 2 μ g/ml; G5, HM-3 16 μ g/ml; G6, HM-3 32 μ g/ml; and G7, HM-3 64 μ g/ml. (H) Migrating cell number of each group. (I) Migration inhibition rate for each group. Mean \pm SD, *P<0.05 and **P<0.01, compared with the control group.

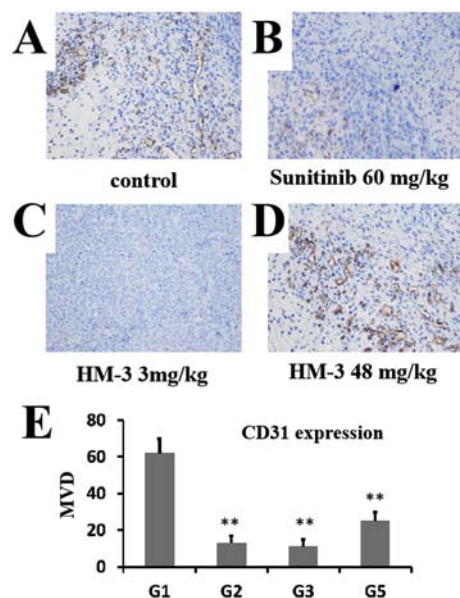


Figure 7. Immunohistochemical analysis of CD31 on the sections of tumor tissues from different groups. (A) Typical image for section from the control group. (B) Typical image for section from sunitinib (60 mg/kg) treatment group. (C) Typical image for section from HM-3 (3 mg/kg) treatment group. (D) Typical image for section from HM-3 (48 mg/kg) treatment group. (E) Comparison of MVD of different groups by counting CD31 positive microvessels. Mean \pm SD, **P<0.01, compared with the control group.