

**CORRIGENDUM**

DOI: 10.3892/or.2020.7784

**The specific killing effect of matrine on castration-resistant prostate cancer cells by targeting the Akt/FoxO3a signaling pathway**

SHOUMIN BAI, TING CHEN, XIAOLI YU, MING LUO, XIANJU CHEN, CHUNHAO LIN, YIMING LAI and HAI HUANG

Oncol Rep 37: 2819-2828, 2017; DOI: 10.3892/or.2017.5510

Subsequently to the publication of the article, the authors have realized that some errors were contained therein that went uncorrected before the paper was sent to press. First, Fig. 4 contained a pair of data panels that had been misplaced: The LY294002, PC-3 data panel in Fig. 4A showed the same data as the RWPE-1, control panel in Fig. 4B, and the LY294002, RWPE-1 data panel showed the same data as the matrine, control panel in Fig. 4B. These errors arose inadvertently during the process of re-organizing the layout of the figure; a corrected version of Fig. 4, showing the correct data panels for the LY294002, PC-3 and LY294002, RWPE-1 experiments in Fig. 4A and B respectively, is shown on the next page. Also note that the data shown in Fig. 4C and E have been re-calculated on the basis of the correction of the data in this Figure, and the revised histograms are also shown in these Figure parts. In view of these corrections, in the “*Matrine induces cell apoptosis by increasing Bim and Bax and decreasing Bcl-2 protein levels in prostate cancer cell lines*” subsection of the Results section towards the bottom of p. 2822, in the penultimate sentence, the text “...LY294002 resulted in 25.88% cell apoptosis in the PC-3 cells and 18.88% in the RWPE1 cells, compared to 3.11 and 6.89%, respectively, with LY294002 treatment only (Fig. 4A-D)” should be corrected to: “...LY294002 resulted in 25.88% cell apoptosis in the PC-3 cells and 18.88% in the RWPE1 cells, compared to **10.94%** and 6.89%, respectively, with LY294002 treatment only (Fig. 4A-D).” (the changed datum is shown in bold). Note that the corrected data shown in Fig. 4, and the revision made to the Results section, do not affect the overall conclusions reported in the paper. The authors thank the Editor of *Oncology Reports* for allowing them the opportunity to present this Corrigendum, and apologize and to the readership for any inconvenience caused.



This work is licensed under a Creative Commons Attribution 4.0 International (CC BY 4.0) License.

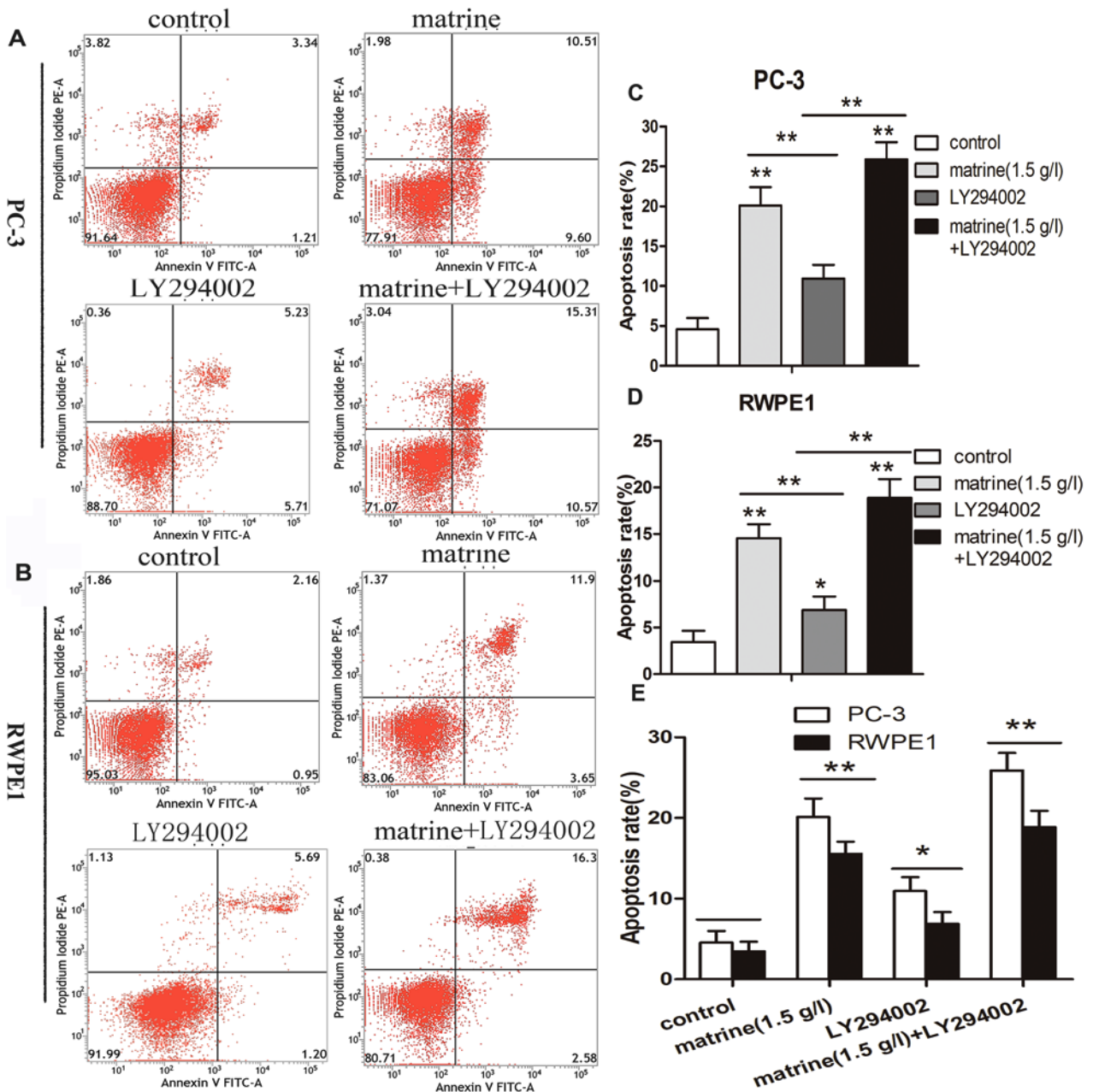


Figure 4. Effects of matrine on prostate cancer cell apoptosis. (A) PC-3 and (B) RWPE1 cells were treated with matrine alone, LY294002 alone or a combination of the two for 48 h, and were then subjected to Annexin V/PI apoptosis assay. (C and D) The percentage of total apoptosis was calculated. (E) The total apoptotic cells of the PC-3 cell line compared to the RWPE1 cell line. \*P<0.05, \*\*P<0.01.