

CORRIGENDUM

DOI: 10.3892/or.2022.8343

Screening of hub genes and evaluation of the growth regulatory role of CD44 in metastatic prostate cancerJUNHAO LIN, ZHI CHEN, ZUAN LI, DEYONG NONG,
XIMING LI, GUIHAIHUANG, NAN HAO, JIANBO LIANG
and WEI LI

Oncol Rep 46: 196, 2021; DOI: 10.3892/or.2021.8147

Subsequently to the publication of the above article, the authors have realized that they inadvertently included images of the same mice in Figs. 7A [the Negative Control (NC) experiment] and 8A [the 5B-3CT + Docetaxel (10 mg/kg) experiment].

After having consulted their original data, the authors have realized that these mice were correctly shown in the paper for the experiments portrayed in Fig. 7A; therefore, the corrected version of Fig. 8 is shown on the next page, showing the mice pertaining to the 5B-3CT + Docetaxel (10 mg/kg) experiment in Fig. 8A. The authors are grateful to the Editor of *Oncology Reports* for allowing them the opportunity to publish a Corrigendum, and all the authors agree to this Corrigendum. Furthermore, they apologize to the readership for any inconvenience caused.



This work is licensed under a Creative Commons
Attribution 4.0 International (CC BY 4.0) License.

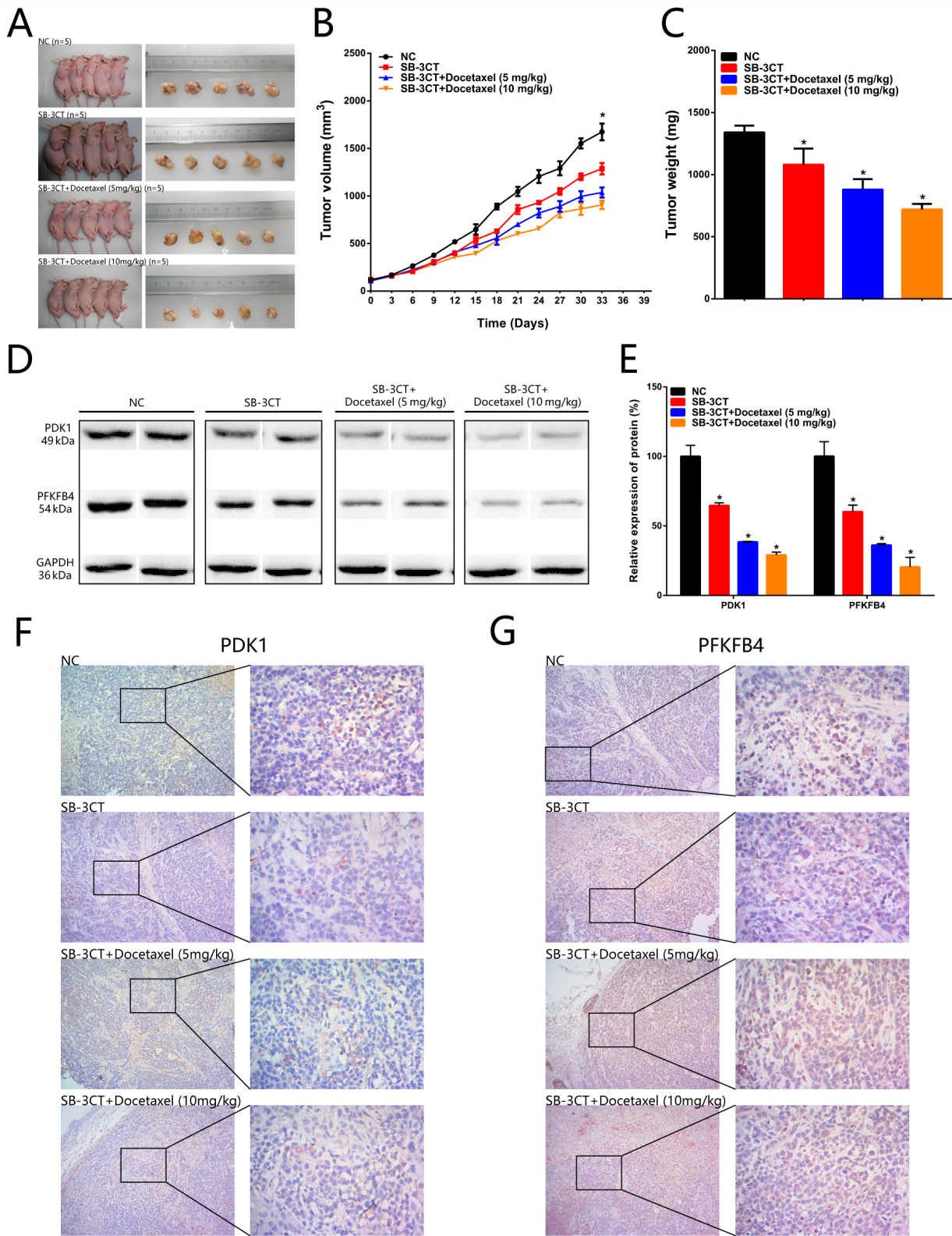


Figure 8. Inhibition of CD44 suppresses tumorigenicity of prostate cancer cells *in vivo* and the CD44 inhibitor (SB-3CT) combined with docetaxel inhibits tumorigenicity of prostate cancer. (A) Tumors dissected from BALB/c nude mice are presented (n=5 for each group). (B) Tumor volume curve of NC, SB-3CT, SB-3CT + Docetaxel (5 mg/kg) and SB-3CT + Docetaxel (10 mg/kg) treatment groups. (C) Tumor weight of NC, SB-3CT, SB-3CT + Docetaxel (5 mg/kg) and SB-3CT + Docetaxel (10 mg/kg) treatment groups. (D and E) PDK1 and PFKFB4 expression levels were downregulated in the PC-3 + SB-3T group, PC-3 + SB-3T + Docetaxel (5 mg/kg) group and PC-3 + SB-3T + Docetaxel (10 mg/kg) group compared with the PC-3 + NC group. (F) PDK1 expression levels were downregulated in the PC-3 + SB-3T group, PC-3 + SB-3T + Docetaxel (5 mg/kg) group and PC-3 + SB-3T + Docetaxel (10 mg/kg) group compared with the PC-3 + NC group. (G) PFKFB4 expression levels were downregulated in the PC-3 + SB-3T group, PC-3 + SB-3T + Docetaxel (5 mg/kg) group and PC-3 + SB-3T + Docetaxel (10 mg/kg) group compared with the PC-3 + NC group. Data are analysed using an ANOVA with Tukey's post hoc test. Data are presented as the mean \pm SD. *P<0.05. NC, negative control; PDK1, pyruvate dehydrogenase kinase 1; PFKFB4, 6-phosphofructo-2-kinase/fructose-2,6-biphosphatase 4.