

# the resistance of gemcitabine for pancreatic cancer settled only by overexpression of deoxycytidine kinase?

NAOTAKE FUNAMIZU<sup>1,2</sup>, AIKOU OKAMOTO<sup>4</sup>, YUKO KAMATA<sup>3</sup>, TAKEYUKI MISAWA<sup>1</sup>,  
TADASHI UWAGAWA<sup>1</sup>, TAKESHI GOCHO<sup>1</sup>, KATSUHIKO YANAGA<sup>1</sup> and YOSHINOBU MANOME<sup>2</sup>

<sup>1</sup>Department of Surgery, <sup>2</sup>Department of Molecular Cell Biology and <sup>3</sup>Oncology, Institute of DNA Medicine,

<sup>4</sup>Department of Gynecology, School of Medicine, The Jikei University School of Medicine,  
3-25-8 Nishi-shinbashi, Minato-ku, Tokyo 105-8461, Japan

Received August 27, 2009; Accepted October 29, 2009

DOI: 10.3892/or\_00000657

**Abstract.** The prognosis of pancreatic cancer remains poor, and the standard first-line chemotherapy with gemcitabine (GEM) has a response rate of less than 20%. Since expression of deoxycytidine kinase (dCK) seems important for improvement of GEM sensitivity, overexpression of dCK was investigated using pancreatic cancer cell lines (Panc-1, MIAPaCa-2 and BxPC-3). dCK gene was introduced into the cell lines by retrovirus and changes in IC<sub>50</sub> were examined. Sensitivity of two pancreatic cancer cell lines to GEM elevated dramatically in comparison with control cells, but change of sensitivity remained at 1.8 times in BxPC-3. Since addition of tetrahydro uridine (THU), an inhibitor of deoxycytidine deaminase (CDA), increased the sensitivity 54-fold, overexpression of CDA seems to be the mechanism for improvement of the sensitivity. In conclusion, dCK is a key enzyme of GEM, but resistance of GEM is not improved in all pancreatic cancer cells by overexpression of dCK. Combination treatment based on expression of GEM metabolism-related gene may become an effective therapy in the future.

## Introduction

The prognosis of pancreatic cancer remains poor, for which surgery remains the only potentially curative treatment. This poor prognosis relates to the advanced disease stage at the time of diagnosis and to its profound resistance to existing therapies. Gemcitabine (GEM) is a cytotoxic pyrimidine

deoxynucleoside analogue, with activity against several solid tumors such as cancers of the pancreas, lung, breast and ovary. GEM is transported into the cell mostly by human equilibrative and concentrative nucleoside transporters (hENT and hCNT, respectively). Cells deficient in hENT1 are highly resistant to GEM (1), while hCNT1 transfection increases GEM sensitivity in pancreatic cancer cell lines (2). This drug is activated by deoxycytidine kinase (dCK), and phosphorylates a monophosphate, diphosphate and triphosphate (dFdCTP). dCK is the rate-limiting enzyme in the transformation of nucleoside analogs, and the increase in dCK activity may improve the efficacy of GEM (3,4). dFdCTP is mainly incorporated into DNA leading to masked chain termination. In addition, its active metabolite can inhibit ribonucleotide reductase (RR), resulting in a decrease in deoxynucleoside triphosphate (dNTP) pools that are required for DNA repair and synthesis as well as inhibition of DNA polymerase. GEM is inactivated by deamination and catalyzed by deoxycytidine deaminase (CDA) (Fig. 1). Mechanism of intrinsic resistance to GEM in carcinomas remains unclear although that of acquired resistance to the drug in pancreatic carcinoma has been intensively studied. Some of these studies have disclosed a decrease in dCK activity (2), increased activity of CDA (5), and increased RR activity (6,7). The aim of this study was to prove whether overexpression of dCK by retrovirus vector improves the therapeutic efficacy of GEM for pancreatic cancer.

## Materials and methods

**Reagent and chemicals.** GEM (difluorodeoxycytidine, dFdC) was a generous gift of Eli Lilly (Indianapolis, IN, USA). Drugs were dissolved in sterile distilled water and diluted in culture medium immediately before use. Tetrahydrouridine (THU) was purchased from Calbiochem (La Jolla, CA, USA) as a sterile white powder in glass vials and stored at -20°C.

**Retroviral vector.** Retroviral vector and a wild-type dCK cDNA have been described previously (8). The retroviral vector pMV-7 and pMV-7-dCK are transcribed from the murine Molony leukemia virus long terminal repeat (LTR). The neomycin resistance gene is transcribed from a thymidine kinase promoter (tk).

---

**Correspondence to:** Dr Naotake Funamizu, Department of Surgery, The Jikei University School of Medicine, 3-25-8 Nishi-shinbashi, Minato-ku, Tokyo 105-8461, Japan  
E-mail: funamizu@jikei.ac.jp

**Abbreviations:** GEM, gemcitabine; dCK, deoxycytidine kinase; THU, tetra-hydro uridine; CDA, deoxycytidine deaminase

**Key words:** gemcitabine, pancreatic cancer, deoxycytidine kinase, deoxycytidine deaminase, tetra-hydro uridine



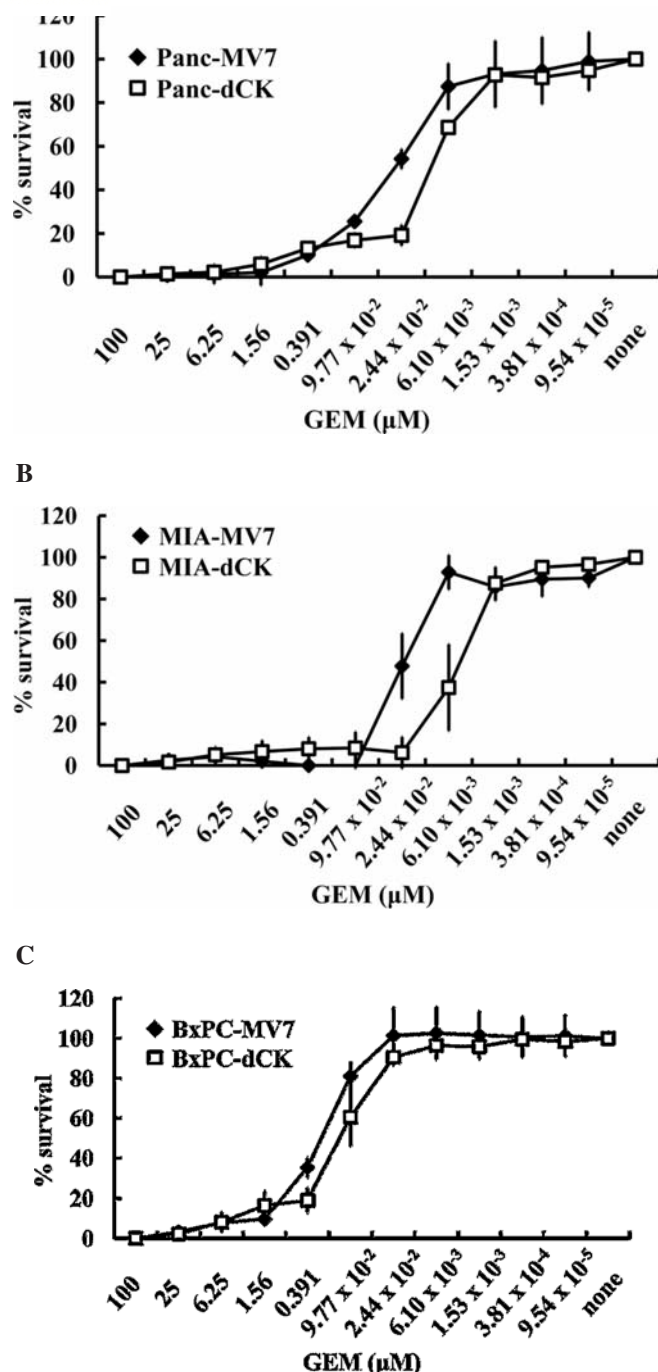


Figure 3. Sensitivity for GEM increased by transduction of dCK gene. Sensitivity of GEM by transduction of dCK gene increased in each cell line, 3.19 times for Panc-1, 5.18 times for MIA-PaCa-2 and 1.85 times for BxPC-3.

primer pair usage to ensure that the correct gene fragment was amplified. All the reactions were performed in triplicates, and the standard method was used for the quantification of the expression for each segment, by use of *GAPDH* as a normalization control gene.

**Cytotoxic assay.** Cells were seeded in 96-well sterile plastic plates (Costar) at 5000 cells/well. After 12 h, cells were treated with stepwise 2-fold dilution of GEM ( $\geq 100 \mu\text{M}$ ) to assess cell viability, and incubated at 37°C for 96 h. The

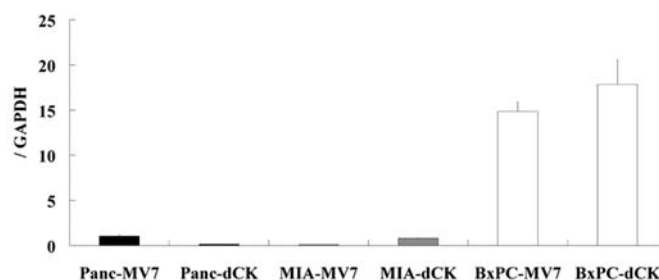


Figure 4. Expression of CDA mRNA level was examined by real-time PCR. BxPC-3 cell lines showed poor sensitivity to GEM.

cells were fixed at 25% glutaraldehyde after drug exposure for 30 min at room temperature and then viable cells were stained with 200  $\mu\text{l}$  of 0.05% methylene blue for 20 min to evaluate the cytotoxicity of GEM. The dye was eluted with 0.33 M HCl for 20 min with agitation. Absorbance was measured in a microplate reader (model 3550, Bio-Rad, Tokyo, Japan) at 598 nm. Mean values were calculated from three different wells in triplicates. Chemosensitivity was evaluated by IC50.

## Results

dCK stable cell lines (Panc-dCK, MIA-dCK and BxPC-dCK) and control cell lines (Panc-MV-7, MIA-MV-7 and BxPC-MV-7) were established to estimate a change of GEM sensitivity by overexpression of dCK. pMV-7 or pMV-dCK vector was transfected in retroviral packaging cells (PA317). After two days, the supernatant was collected and cells were precipitated with centrifuge at 3000 rpm and assumed as the stock of virus liquid. Cell lines infected with retrovirus were selected by G418 for 3 weeks. Expression level of dCK of each cell line was measured by real-time PCR. The expression level of Panc-dCK, MIA-dCK and BxPC-dCK were 9.02, 9.69 and 71.4 times, respectively, higher than their controls (Panc-MV7, MIA-MV7 and BxPC-MV7) respectively (Fig. 2). IC50 of control cell lines (Panc-MV7, MIA-MV7 and BxPC-MV7) to GEM was  $29.77 \pm 4.11$ ,  $23.26 \pm 6.87$  and  $256.12 \pm 17.4$  nM after 96 h of exposure, respectively. The sensitivity of BxPC-MV-7 to GEM was >8 times lower than the other cell lines (Panc-MV-7, MIA-MV-7 cells). Similarly GEM was administered with a dCK induction cell to examine change in IC50, transducing of dCK gene increased the sensitivity to GEM by 3.19, 5.18 and 1.85 times, respectively (Fig. 3). Though the expression of dCK increased >70 times in BxPC-dCK cells, IC50 did not change much in comparison with other cell lines. mRNA expression of metabolism-related gene was examined by RT-PCR. Expression of CDA, dCMPDA, TK2, 5-NT, p53, hENT-1, RRM1 and RRM2 was confirmed with all cell lines. The expression of other mRNA was almost at the same level (data not shown), but only CDA mRNA level showed significant difference (Fig. 4). Expression of CDA developed >14 times in BxPC-dCK in comparison with Panc-dCK or MIA-dCK. When THU, an inhibitor of CDA with GEM, was given, only the sensitivity of BxPC-dCK cell line increased by as high as



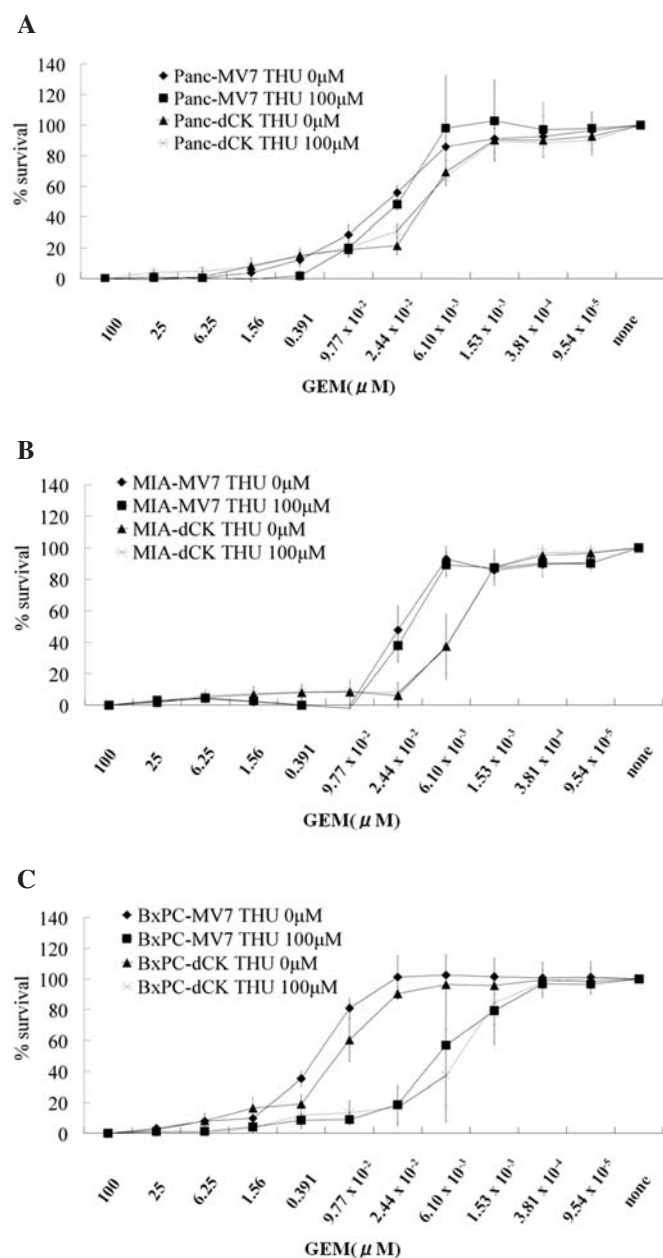


Figure 5. In the cytotoxic assay, the addition of THU, an inhibitor of CDA, increased the sensitivity of BxPC-3 to GEM.

54 times (Fig. 5). Panc-dCK, MIA-dCK-cell lines showed minimal change in IC50.

## Discussion

The effectivity of gene therapy by single gene induction or anticancer drug is limited for treatment of pancreatic cancer, because the chemosensitivity to GEM differs depending on genetic expression of the pancreatic cancer. The combination treatment that matched with genetic expression is required to treat pancreatic cancer of variable characteristics. Our study suggested that the combination of dCK and THU may be an effective treatment for pancreatic cancer.

Various studies have reported on mechanism of GEM-resistance in pancreatic cancer, especially on dCK (3,4,10-12), CDA (5,13,14), RR (6,7,15) and hENT (1,2,16-20). dCK

gene, a key enzyme of GEM metabolism, was transduced by retrovirus into three cell lines, Panc-1, MIAPaCa-2 and BxPC-3. Expression level of dCK mRNA in the cell lines transduced with dCK gene were examined and compared with control cells by RT-PCR. The sensitivity to GEM was not in proportion to expression of dCK in our study. Therefore, overexpression of dCK was not effective in all pancreatic cancer cell lines.

As to the cause, overexpression of CDA was suggested, since CDA metabolizes GEM rapidly to its inactive metabolite, and CDA is known to be associated with GEM resistance.

dCK is a key enzyme, but is not necessarily effective in all pancreatic cancer cell lines. Treatment in accordance with the characteristics of the pancreatic cancer cells is needed. Many studies have reported the effectiveness of combination treatment of anticancer drug and inhibitor or gene transduction (22-32). There is no treatment that is effective for all carcinomas with various characteristics. These regimens may be more effective if the regimen is chosen depending on gene expression of pancreatic cancer.

In conclusion, THU is effective for pancreatic cancer when CDA is expressed at high level, and GEM sensitivity increased by transducing the dCK gene. Therefore, combination treatment depending on gene expression could be useful.

## References

1. Spratlin J, Sangha R, Glubrecht D, Dabbagh L, Young JD, Dumontet C, Cass C, Lai R and Mackey JR: The absence of human equilibrative nucleoside transporter 1 is associated with reduced survival in patients with gemcitabine treated pancreas adenocarcinoma. *Clin Cancer Res* 10: 6956-6961, 2004.
2. Garcia-Manteiga J, Molina-Arcas M, Casado FJ, Mazo A and Pastor-Anglada M: Nucleoside transporter profiles in human pancreatic cancer cells: role of hCNT1 in 2',2'-difluorodeoxycytidine-induced cytotoxicity. *Clin Cancer Res* 9: 5000-5008, 2003.
3. Kroep JR, Loves WJ, van der Wilt CL, *et al*: Pretreatment deoxycytidine kinase levels predict in vivo gemcitabine sensitivity. *Mol Cancer Ther* 1: 371-376, 2002.
4. Blackstock AW, Lightfoot H, Case LD, *et al*: Tumor uptake and elimination of 2',2'-difluorodeoxy-cytidine (gemcitabine) after deoxycytidine kinase gene transfer correlation with in vivo tumor response. *Clin Cancer Res* 7: 3263-3268, 2001.
5. Neff T and Blau CA: Forced expression of cytidine deaminase confers resistance to cytosine arabinoside and gemcitabine. *Exp Hematol* 24: 1340-1346, 1996.
6. Bergman AM, Eijk PP, Ruiz van Haperen VW, Smid K, Veerman G, Hubeek I, van den Ijssel P, Ylstra B and Peters GJ: In vivo induction of resistance to gemcitabine results in increased expression of ribonucleotide reductase subunit M1 as the major determinant. *Cancer Res* 65: 9510-9516, 2005.
7. Nakahira S, Nakamori S, Tsujie M, *et al*: Involvement of ribonucleotide reductase M1 subunit overexpression in gemcitabine resistance of human pancreatic cancer. *Int J Cancer* 120: 1355-1363, 2003.
8. Manome Y, Wen PY, Dong Y, Tanaka T, Mitchell BS, Kufe DW and Fine HA: Viral vector transduction of the human deoxycytidine kinase cDNA sensitizes glioma cells to the cytotoxic effects of cytosine arabinoside in vitro and in vivo. *Nat Med* 2: 567-573, 1996.
9. Chomczynski P and Sacchi N: Single-step method of RNA isolation by acid guanidium thiocyanate-phenol-chloroform extraction. *Anal Biochem* 162: 156-159, 1987.
10. Galmarini CM, Clarke ML, Jordheim L, Santos CL, Cros E, Mackey JR and Dumontet C: Resistance to gemcitabine in a human follicular lymphoma cell line is due to partial deletion of the deoxycytidine kinase gene. *BMC Pharmacol* 24: 4-8, 2004.



SPANDIDOS a H, Oguri T, Sato S, Maeda H, Niimi T and Ueda R:

11. Roles of human equilibrative nucleoside transporter 1 and deoxycytidine kinase in non-small cell lung cancer. *Cancer Sci* 95: 753-757, 2004.
12. Jordheim LP, Galmarini CM and Dumontet C: Gemcitabine resistance due to deoxycytidine kinase deficiency can be reverted by fruitfly deoxynucleoside kinase, DmdNK, in human uterine sarcoma cells. *Cancer Chemother Pharmacol* 58: 547-554, 2006.
13. Bengala C, Guarneri V, Giovannetti E, *et al*: Prolonged fixed dose rate infusion of gemcitabine with autologous haemopoietic support in advanced pancreatic adenocarcinoma. *Br J Cancer* 93: 35-40, 2005.
14. Bouffard DY, Laliberté J and Momparler RL: Kinetic studies on 2',2'-difluorodeoxycytidine (Gemcitabine) with purified human deoxycytidine kinase and cytidine deaminase. *Biochem Pharmacol* 45: 1857-1861, 1993.
15. Smid K, Bergman AM, Eijk PP, *et al*: Micro-array analysis of resistance for gemcitabine results in increased expression of ribonucleotide reductase subunits. *Nucleosides Nucleotides Nucleic Acids* 25: 1001-1007, 2006.
16. Mori R, Ishikawa T and Ichikawa Y: Human equilibrative nucleoside transporter 1 is associated with the chemosensitivity of gemcitabine in human pancreatic adenocarcinoma and biliary tract carcinoma cells. *Oncol Rep* 17: 1201-1205, 2007.
17. Giovannetti E, Del Tacca M, Mey V, *et al*: Transcription analysis of human equilibrative nucleoside transporter-1 predicts survival in pancreas cancer patients treated with gemcitabine. *Cancer Res* 66: 3928-3935, 2006.
18. Hubeek I, Stam RW, Peters GJ, *et al*: The human equilibrative nucleoside transporter 1 mediates in vitro cytarabine sensitivity in childhood acute myeloid leukaemia. *Br J Cancer* 93: 1388-1394, 2005.
19. Damaraju VL, Damaraju S, Young JD, Baldwin SA, Mackey J, Sawyer MB and Cass CE: Nucleoside anticancer drugs: the role of nucleoside transporters in resistance to cancer chemotherapy. *Oncogene* 22: 7524-7536, 2003.
20. Mata JF, García-Manteiga JM, Lostao MP, *et al*: Role of the human concentrative nucleoside transporter (hCNT1) in the cytotoxic action of 5(Prime)-deoxy-5-fluorouridine, an active intermediate metabolite of capecitabine, a novel oral anticancer drug. *Mol Pharmacol* 59: 1542-1548, 2001.
21. Rauchwerger DR, Firby PS, Hedley DW and Moore MJ: Equilibrative-sensitive nucleoside transporter and its role in gemcitabine sensitivity. *Cancer Res* 60: 6075-6079, 2000.
22. Matthews DJ, Yakes FM, Chen J, *et al*: Pharmacological abrogation of S-phase checkpoint enhances the anti-tumor activity of gemcitabine in vivo. *Cell Cycle* 6: 104-110, 2007.
23. Mey V, Giovannetti E, De Braud F, *et al*: In vitro synergistic cytotoxicity of gemcitabine and pemetrexed and pharmacogenetic evaluation of response to gemcitabine in bladder cancer patients. *Br J Cancer* 95: 289-297, 2006.
24. Hoffmann D and Wildner O: Enhanced killing of pancreatic cancer cells by expression of fusogenic membrane glycoproteins in combination with chemotherapy. *Mol Cancer Ther* 5: 2013-2022, 2006.
25. Bianco C, Giovannetti E, Ciardiello F, *et al*: Synergistic anti-tumor activity of ZD6474, an inhibitor of vascular endothelial growth factor receptor and epidermal growth factor receptor signaling, with gemcitabine and ionizing radiation against pancreatic cancer. *Clin Cancer Res* 12: 7099-7107, 2006.
26. Giovannetti E, Mey V, Nannizzi S, Pasqualetti G, Marini L, Del Tacca M and Danesi R: Cellular and pharmacogenetics foundation of synergistic interaction of pemetrexed and gemcitabine in human non-small cell lung cancer cells. *Mol Pharmacol* 68: 110-118, 2005.
27. Vernejoul F, Ghénassia L, Souque A, *et al*: Gene therapy based on gemcitabine chemosensitization suppresses pancreatic tumor growth. *Mol Ther* 14: 758-767, 2006.
28. Bocci G, Fioravanti A, Orlandi P, Bernardini N, Collecchi P, Del Tacca M and Danesi R: Fluvastatin synergistically enhances the antiproliferative effect of gemcitabine in human pancreatic cancer MIA PaCa-2 cells. *Br J Cancer* 93: 319-330, 2005.
29. Yao B, He QM, Tian L, *et al*: Enhanced antitumor effect of the combination of tumstatin gene therapy and gemcitabine in murine models. *Hum Gene Ther* 16: 1075-1086, 2005.
30. Hamada S, Satoh K, Kimura K, Kanno A, Masamune A and Shimosegawa T: MSX2 overexpression inhibits gemcitabine-induced caspase-3 activity in pancreatic cancer cells. *World J Gastroenterol* 11: 6867-6870, 2005.
31. Duxbury MS, Ito H, Zinner MJ, Ashley SW and Whang EE: RNA interference targeting the M2 subunit of ribonucleotide reductase enhances pancreatic adenocarcinoma chemosensitivity to gemcitabine. *Oncogene* 23: 1539-1548, 2004.
32. Kindler HL: The pemetrexed/gemcitabine combination in pancreatic cancer. *Cancer* 95: 928-932, 2002.