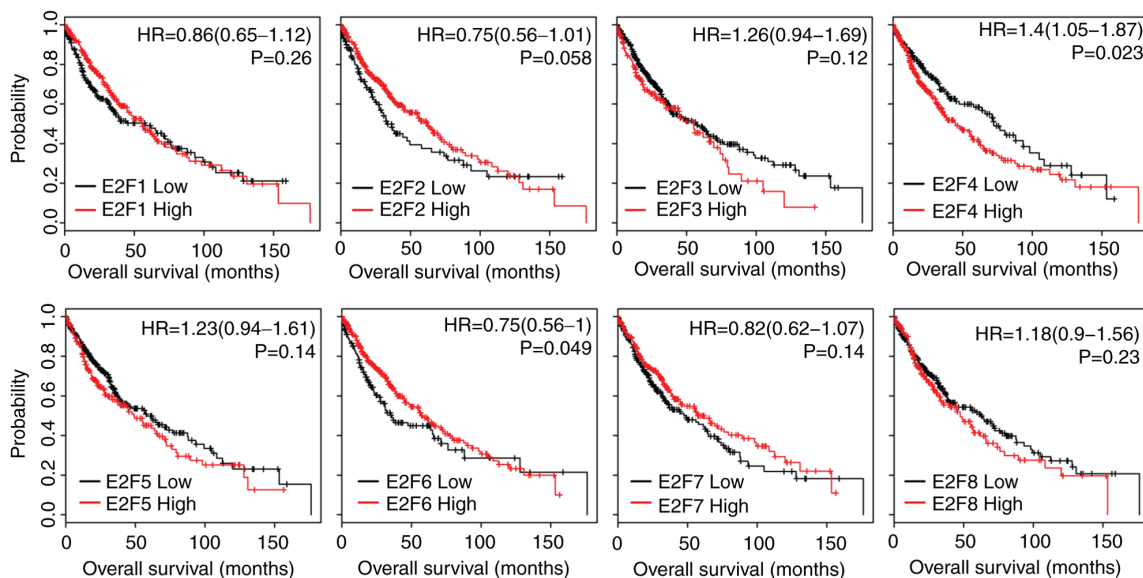


Figure S1. Expression levels of E2F family genes are associated with the overall survival in patients with LUSC and STAD. (A) The Kaplan-Meier Plotter demonstrated the associations between E2F1-8 and overall survival in patients with LUSC. The log-rank test was used to determine the overall survival P-value. (B) The Kaplan-Meier Plotter demonstrated the association between E2F1-8 and overall survival in patients with STAD. LUSC, lung squamous cell carcinoma; STAD, stomach adenocarcinoma; HR, hazard ratio.

A LUSC



B STAD

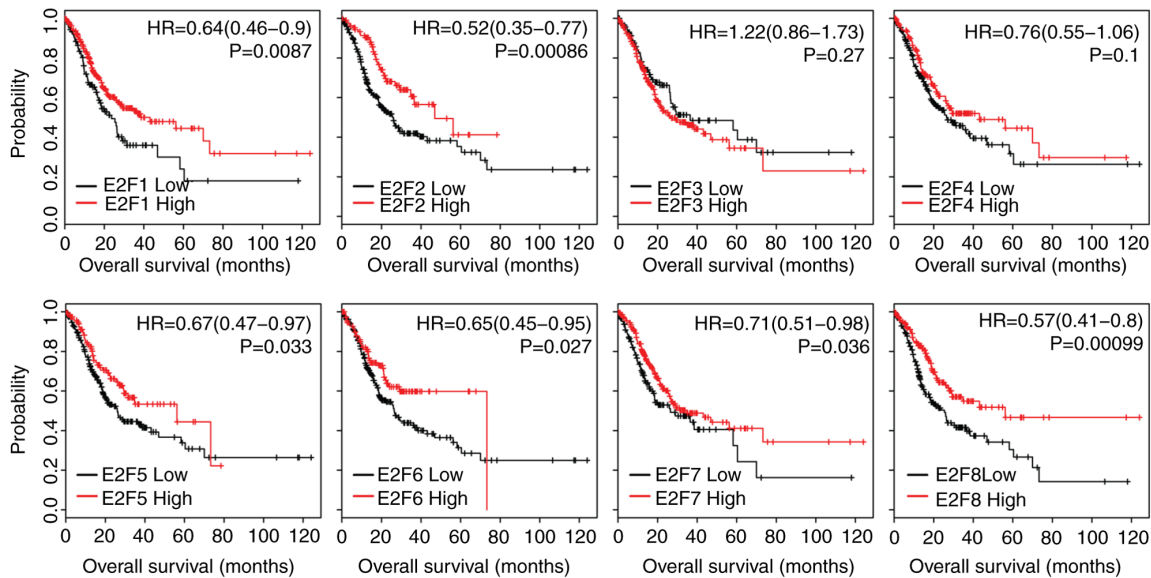


Figure S2. Box plots demonstrated the expression levels of the E2F family genes in different LUAD pathological T stages. LUAD, lung adenocarcinoma.

