

Figure S1. Dot blot tests of sera against individual peptides. (A) A weak response was exhibited against the TPTFSTGSIKGLC peptide, while (B) a strong response was visible against the CKPVIRVPSVPPV peptide. Serum dilutions ranged from 1:100 to 1:1,600.

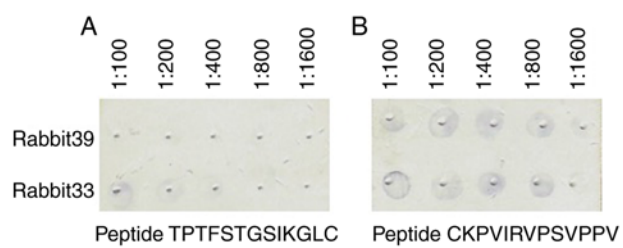


Figure S2. Affinity-purified sera test. Coomassie staining of affinity purified IgG revealed (A) lower levels of antibodies targeting the TPTFSTGSIKGLC peptide compared with the (B) CKPVIRVPSVPPV peptide in rabbits 33 and 39.

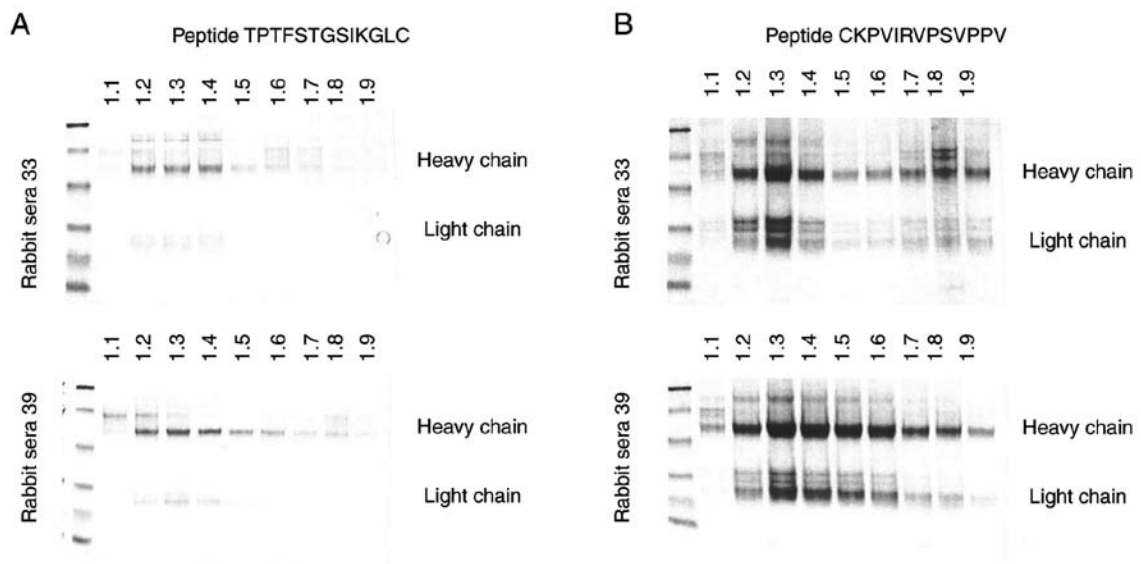


Figure S3. Expression analysis. The chart represents the differences in mean expression values between the control, tumour-free and tumour groups for each KRT gene. Analysis was made on previously published microarray data derived from 8 SCCOTs, 10 matched SCCOT/clinically tumour-free tongue samples, two clinically tumour-free tongue samples in SCCOT patients and 14 samples from healthy normal tongues (14). KRT, keratin; C, control; TF, tumor-free; T, tumor; SCCOT, squamous cell carcinoma of the oral tongue.

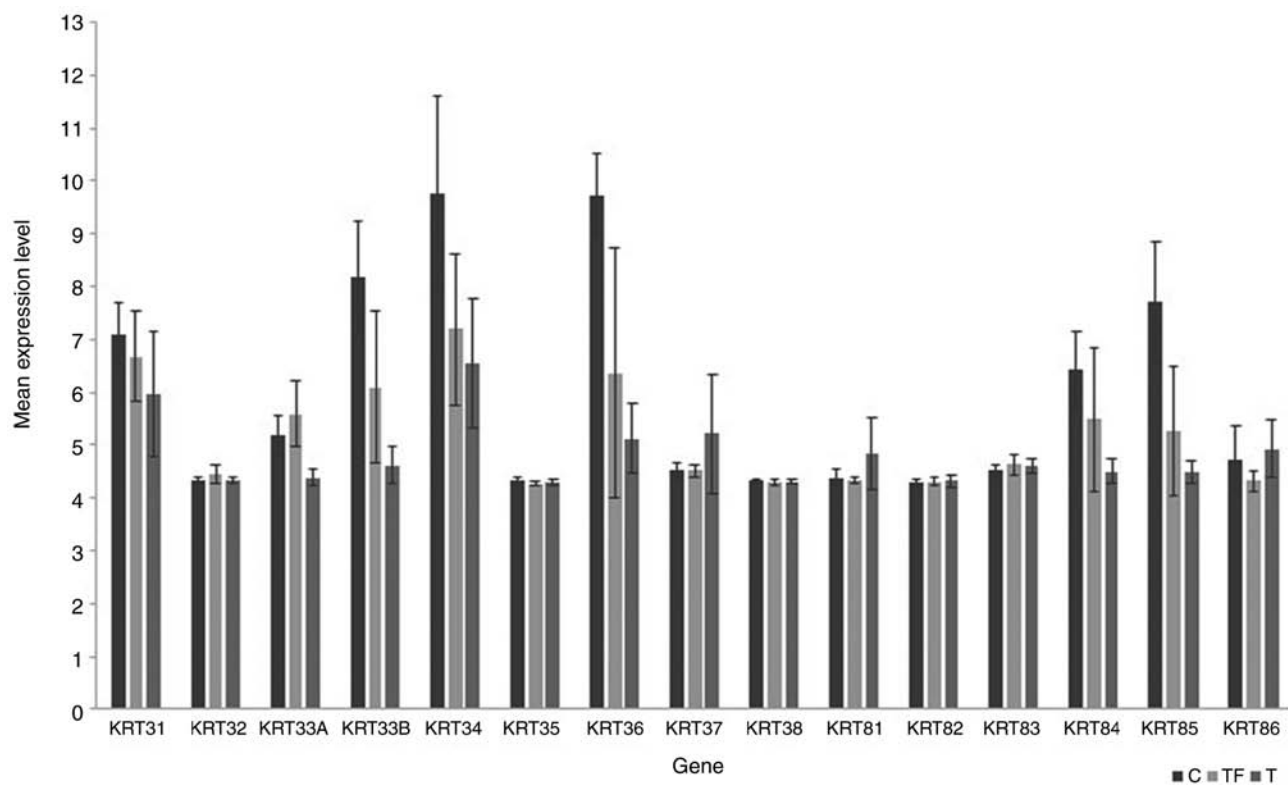


Table SI. Hair keratin RNA expression in tongue tumour, tumour free and control samples.

Gene	Group A	Mean	Group B	Mean difference	P-value
<i>KRT31</i>	Control	7.060224	Tumour-free	0.3691215	0.494
	Tumour-free	6.691102	Tumour	0.7372482	0.033
	Tumour	5.953854	Control	1.1063697	0.003
<i>KRT32</i>	Control	4.343320	Tumour-free	-0.1179188	0.019
	Tumour-free	4.461239	Tumour	0.1324539	0.002
	Tumour	4.328785	Control	0.0145350	0.936
<i>KRT33A</i>	Control	5.212983	Tumour-free	-0.3956462	0.029
	Tumour-free	5.608629	Tumour	1.2123226	0.000
	Tumour	4.396307	Control	0.8166764	0.000
<i>KRT33B</i>	Control	8.032979	Tumour-free	1.9398105	0.000
	Tumour-free	6.093169	Tumour	1.4644177	0.000
	Tumour	4.628751	Control	3.4042282	0.000
<i>KRT34</i>	Control	9.647383	Tumour-free	2.4932241	0.000
	Tumour-free	7.154159	Tumour	0.6019275	0.372
	Tumour	6.552231	Control	3.0951517	0.000
<i>KRT35</i>	Control	4.323533	Tumour-free	0.0438731	0.141
	Tumour-free	4.279660	Tumour	-0.1213571	0.571
	Tumour	4.300017	Control	0.0235160	0.559
<i>KRT36</i>	Control	9.704924	Tumour-free	3.4728260	0.000
	Tumour-free	6.232098	Tumour	1.1094928	0.053
	Tumour	5.122605	Control	4.5823189	0.000
<i>KRT37</i>	Control	4.527319	Tumour-free	0.0182768	0.997
	Tumour-free	4.509042	Tumour	-0.7057424	0.005
	Tumour	5.214784	Control	-0.6874656	0.018
<i>KRT38</i>	Control	4.317012	Tumour-free	0.0232455	0.373
	Tumour-free	4.293767	Tumour	-0.0182738	0.455
	Tumour	4.312041	Control	0.0049716	0.955
<i>KRT81</i>	Control	4.383796	Tumour-free	0.0410750	0.959
	Tumour-free	4.342721	Tumour	-0.5047461	0.001
	Tumour	4.847467	Control	-0.4636710	0.008
<i>KRT82</i>	Control	4.284504	Tumour-free	-0.0378234	0.406
	Tumour-free	4.322327	Tumour	-0.0094080	0.930
	Tumour	4.331735	Control	-0.0472314	0.249
<i>KRT83</i>	Control	4.509566	Tumour-free	-0.1358682	0.028
	Tumour-free	4.645434	Tumour	0.0171972	0.923
	Tumour	4.628237	Control	-0.1186710	0.062
<i>KRT84</i>	Control	6.436055	Tumour-free	0.9958988	0.007
	Tumour-free	5.440157	Tumour	0.9359366	0.004
	Tumour	4.504220	Control	1.9318354	0.000
<i>KRT85</i>	Control	7.526327	Tumour-free	2.2377788	0.000
	Tumour-free	5.288548	Tumour	0.7939715	0.030
	Tumour	4.494577	Control	3.0317503	0.000
<i>KRT86</i>	Control	4.696833	Tumour-free	0.3596759	0.075
	Tumour-free	4.337157	Tumour	-0.5908480	0.000
	Tumour	4.928005	Control	-0.2311721	0.331