

Figure S1. Effect of GA on RCC cell apoptosis. 786-O and A498 cells were pre-treated with 20  $\mu$ M GA or left untreated. Representative cell cycle plots 2 days after GA treatment. Cell apoptosis assay was performed using flow cytometry. n=5. GA, ginkgolic acid; RCC, renal cell carcinoma; ns, not significant.

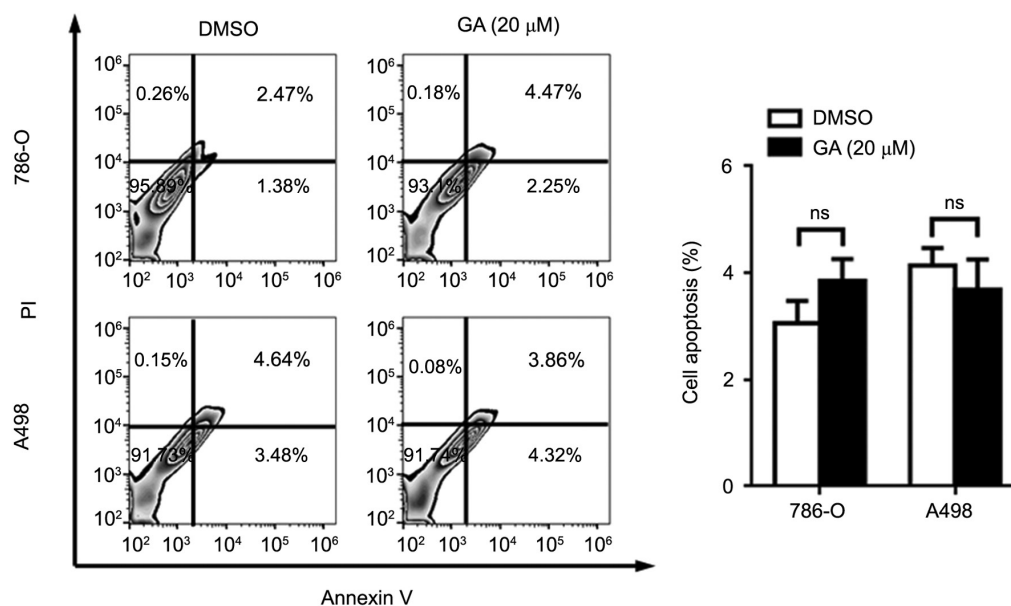


Figure S2. Effect of GA on tumor growth *in vivo*. Mice were injected subcutaneously with 786-O or A498 cells ( $1 \times 10^7$  cells) followed by intragastric administration of GA (10 mg/kg) or 0.9% saline twice per week. (A) Tumor volumes, (B) tumor weight as a percentage of body weight and (C) the percentage of body weight loss were measured 6 weeks after GA administration.  $n=5$ . \* $P<0.05$ , as indicated. GA, ginkgolic acid; ns, not significant.

