

Figure S1. Flow cytometry for the detection of apoptosis in JEG-3 cells. (A) Apoptosis after ADAM12 silencing in JEG-3 cells. (B) Apoptosis after 3MA treatment in si-ADAM12 transfected JEG-3 cells. ADAM12, ADAM metalloproteinase domain 12; si, small interfering; BC, blank control; NC, negative control.

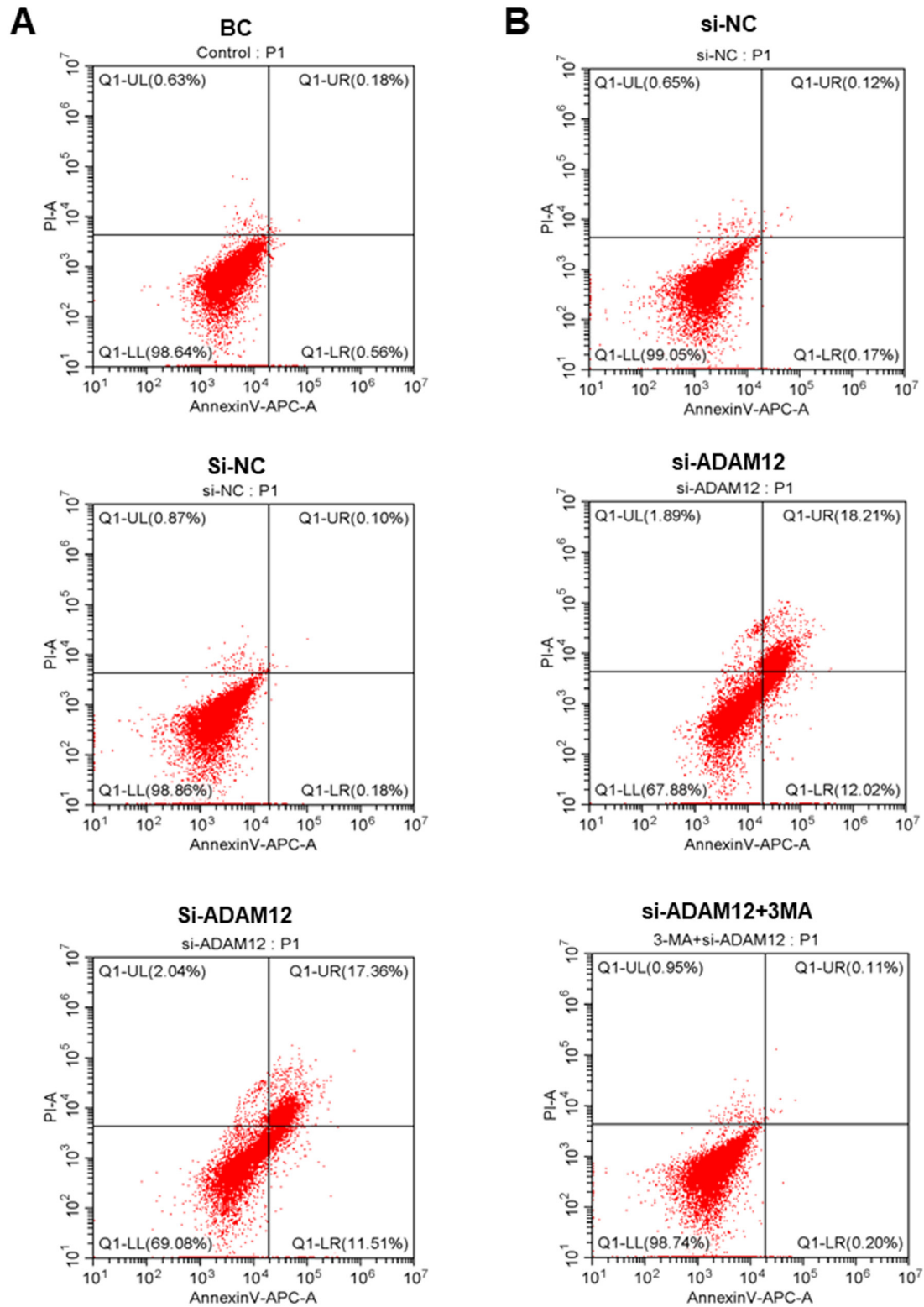


Figure S2. Flow cytometry for cell cycle analysis in JEG-3 cells after ADAM12 silencing. Cell cycle analysis in (A) si-NC-transfected, (B) si-ADAM12-transfected and (C) si-ADAM12 + 3MA transfected JEG-3 cells. ADAM12, ADAM metalloproteinase domain 12; si, small interfering; NC, negative control; 3MA, 3-methyladenine.

