

Figure S1. Flow cytometry analysis of surface markers of p53^{+/-} mouse bone marrow mesenchymal stem cells. Expression of cell surface markers (A) CD29, (B) CD34, (C) CD44, CD45 and CD11b and (D) CD90 compared with the IgG or IgM.

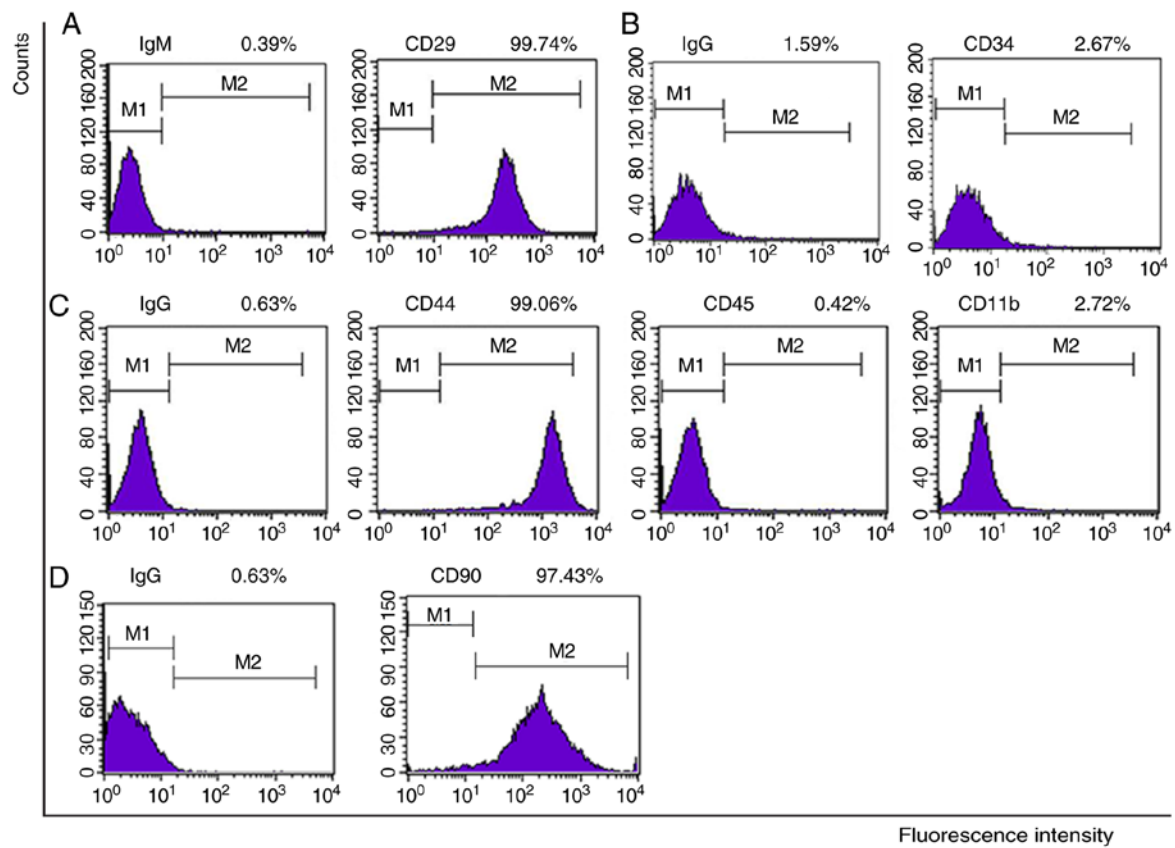


Figure S2. Flow cytometry analysis of surface markers of p53^{-/-} mouse bone marrow mesenchymal stem cells. Expression of cell surface markers (A) CD29, (B) CD34, (C) CD44, CD45, and CD11b, and (D) CD90 compared with the IgG or IgM.

