

Figure S1. (A) KM OS curve between molecular subtypes C1 and C2. (B) KM OS curve between C1 and C3. (C) KM OS curve between C2 and C3. KM, Kaplan-Meier; OS, overall survival.

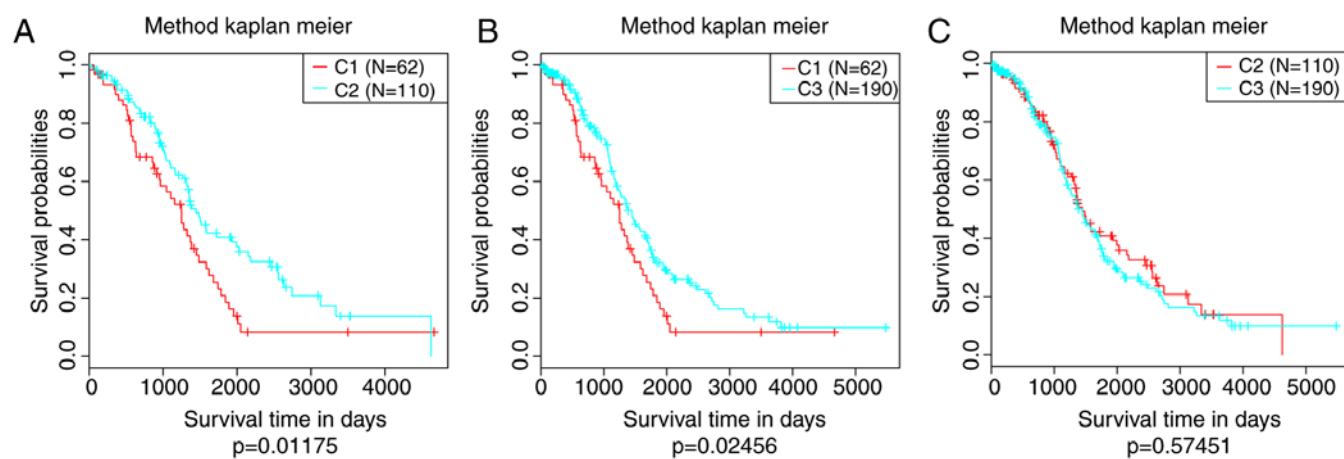


Figure S2. Mutation rates of 39 genes among C1, C2 and C3 molecular subtypes.

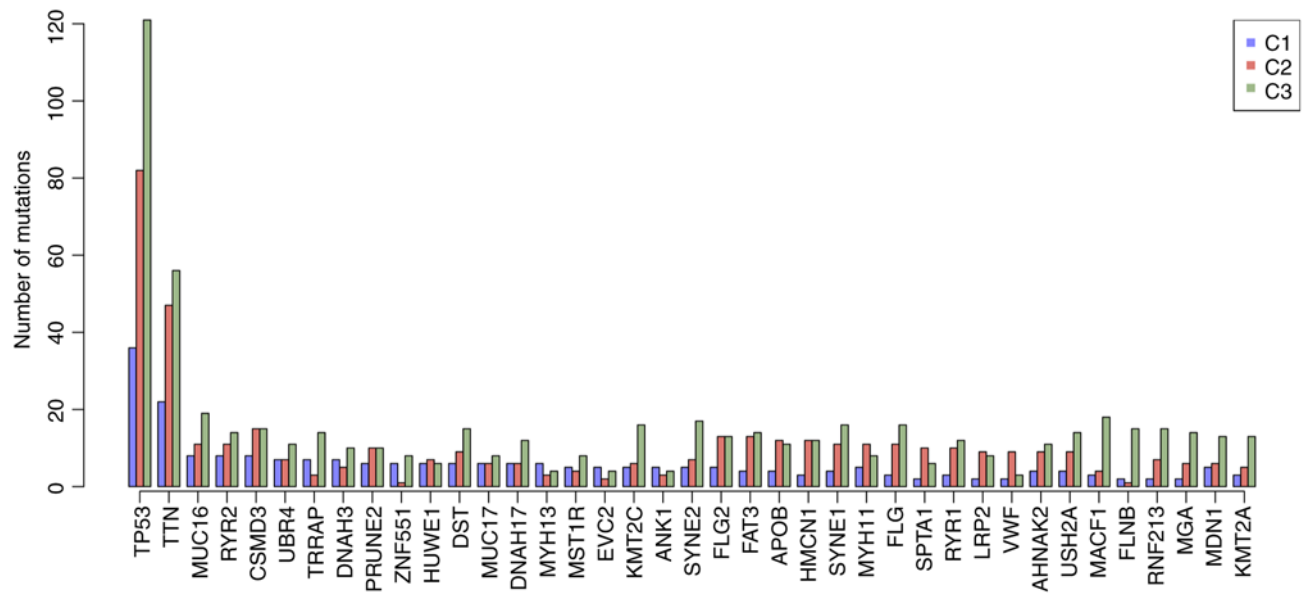


Figure S3. (A) Expression levels of TLL1, COL16A1, PTGFR, CILP2, KIF26B, IFI27, GAS1 and CCR7 in different age groups. (B) Expressions levels of TLL1, COL16A1, PTGFR, CILP2, KIF26B, IFI27, GAS1 and CCR7 in patients with different TNM stages. (C) Expression levels of TLL1, COL16A1, PTGFR, CILP2, KIF26B, IFI27, GAS1 and CCR7 in patients with different tumor grades. (D) Expression levels of TLL1, COL16A1, PTGFR, CILP2, KIF26B, IFI27, GAS1 and CCR7 in patients with or without lymphatic invasion. TNM, Tumor-Node-Metastasis; TMP, transcripts per million; TLL1, tolloid-like 1; COL16A1, type XVI collagen; PTGFR, prostaglandin F2 α ; CILP2, cartilage intermediate layer protein 2; KIF26B kinesin family member 26b; IFI27, interferon inducible protein 27; GAS1, growth arrest-specific gene 1; CCR7, chemokine receptor 7.

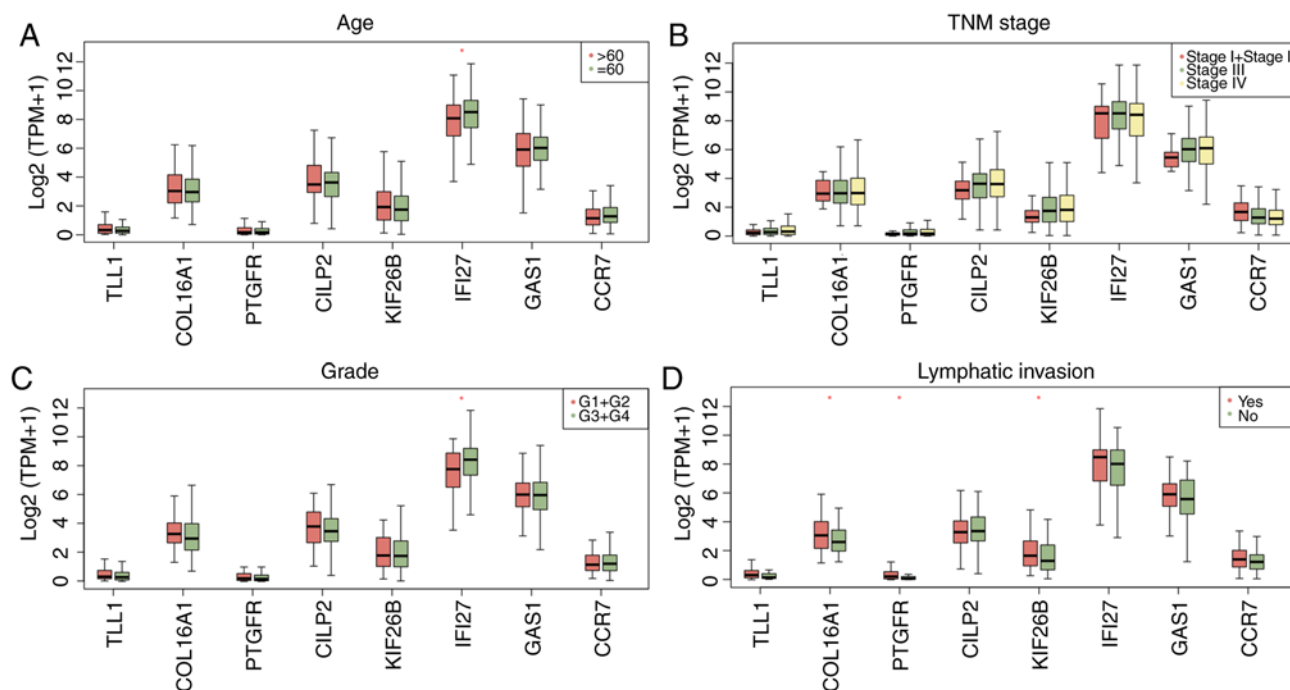


Figure S4. (A-H) The expression levels of (A) TLL1, (B) COL16A1, (C) PTGFR, (D) CILP2, (E) KIF26B, (F) IFI27, (G) GAS1 and (H) CCR7 in normal and tumor tissues. TPM, transcripts per million; TLL1, tolloid-like 1; COL16A1, type XVI collagen; PTGFR, prostaglandin F2 α ; CILP2, cartilage intermediate layer protein 2; KIF26B kinesin family member 26b; IFI27, interferon inducible protein 27; GAS1, growth arrest-specific gene 1; CCR7, chemokine receptor 7.

