

Figure S1. Validation of VEGFR-1 staining in IHC analysis in human placenta. Representative fields of sections incubated with (A) or without (B) the anti-VEGFR-1 primary antibody are shown. Magnification, x25. VEGFR-1, vascular endothelial growth factor receptor 1; IHC, immunohistochemical.

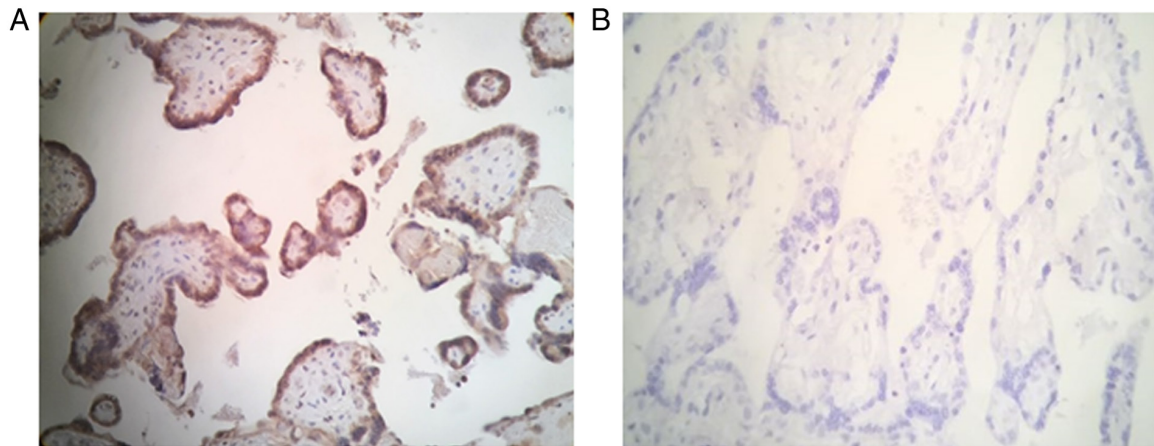


Table SI. Percentage of Iba1/VEGFR-1 double-positive cells.

Patients	Iba-1/VEGFR-1-positive cells (%) <sup>a</sup>	
	Tumour	Parenchyma
1	8	0
2	0	0
5	0	0
6	33	5
9	36	0
13	21	8
17	0	23
18	27	14
20	46	10
21	14	36
24	54	30
25	48	15
29	0	0
31	7	27
32	53	0
34	29	0
34	50	0
35	21	24
36	25	20
37	6	8
39	6	0
41	24	0
42	0	42
Mean ± SEM	24±4	11±3 <sup>b,c</sup>

<sup>a</sup>Percentages of cells simultaneously expressing Iba1 and VEGFR-1 in the parenchyma or tumour regions of GB specimens from samples analysed in Fig. 3. <sup>b</sup>Statistical analysis was performed by Wilcoxon signed-rank test; <sup>c</sup>P<0.05. Iba1, ionized calcium binding adaptor molecule 1; VEGFR-1, vascular endothelial growth factor receptor 1.