

Figure S1. Quantified western blot analysis. Western blot analysis was quantified and the data from (A) Figure 1A, (B) Figure 1D, (C) Figure 2E and (D) Figure 3B were presented as the mean \pm standard error. *P<0.05. CDK, cyclin dependent kinase.

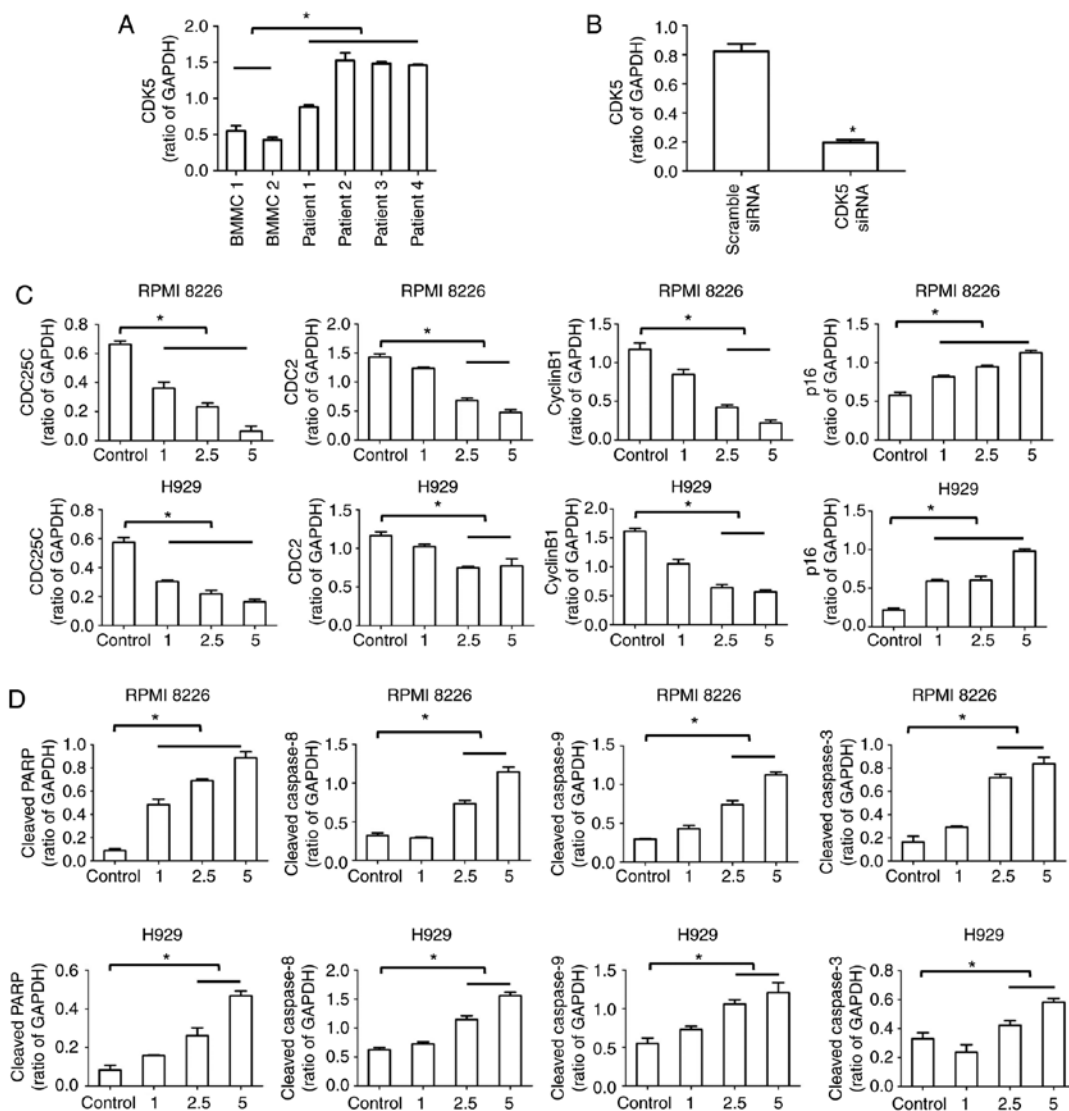


Figure S2. Expression of CDK5 in multiple myeloma cells treated with dinaciclib. RPMI8226 and H929 cells were treated for 24 h with dinaciclib at indicated concentrations. Protein lysates were subjected to immunoblotting with the indicated antibodies. GAPDH was used as a loading control. Blots shown are representative of at least three independent experiments. The data were presented as the mean \pm standard error. * $P < 0.05$. CDK, cyclin dependent kinase.

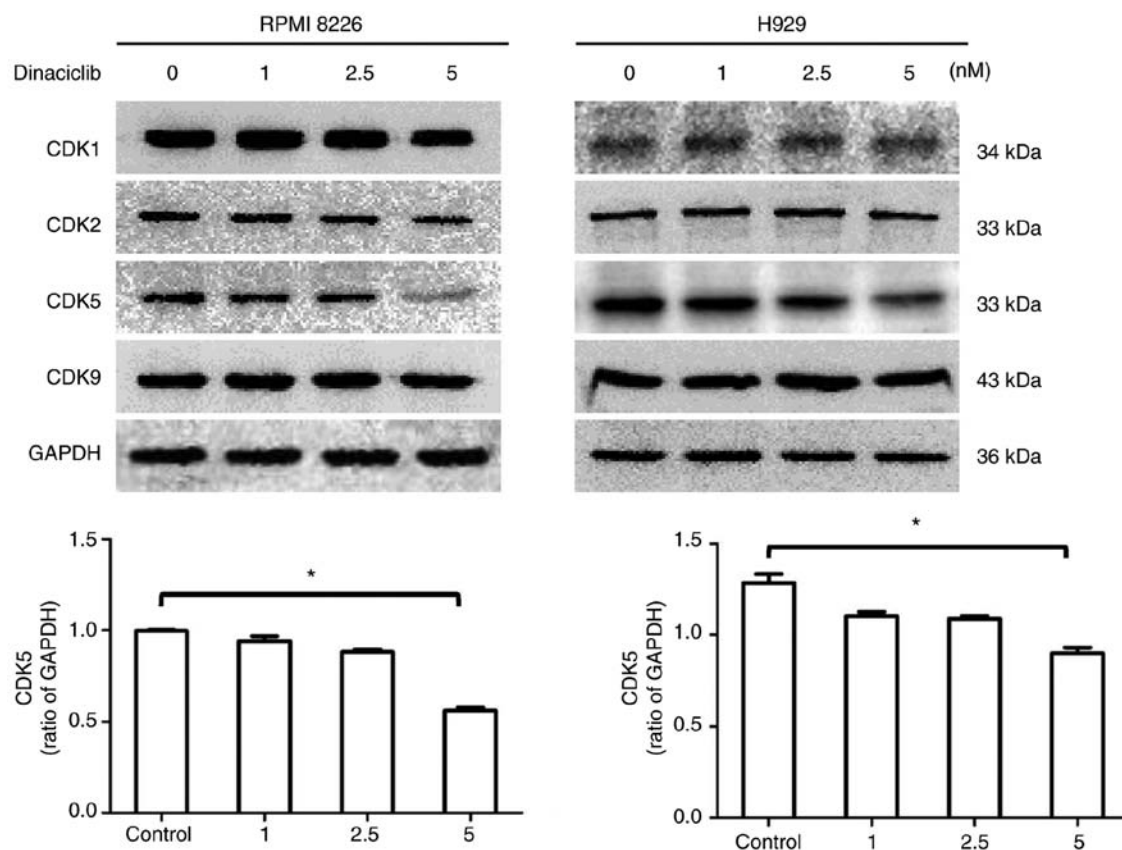


Figure S3. Combination of dina and bor shows synergistic effect in primary MM cells. Primary MM cells from two MM patients were treated for 24 h with dina, bor, or dina plus bor and then assessed for viability by using the MTT assay. Isobologram analysis shows the synergistic cytotoxic effect of dina and bor. The graphs (right panel) are derived from the values given in the tables (left panel). CI<1 indicates synergy. Dina, dinaciclib; Bor, bortezomib; MM, multiple myeloma; CI, confidence interval.

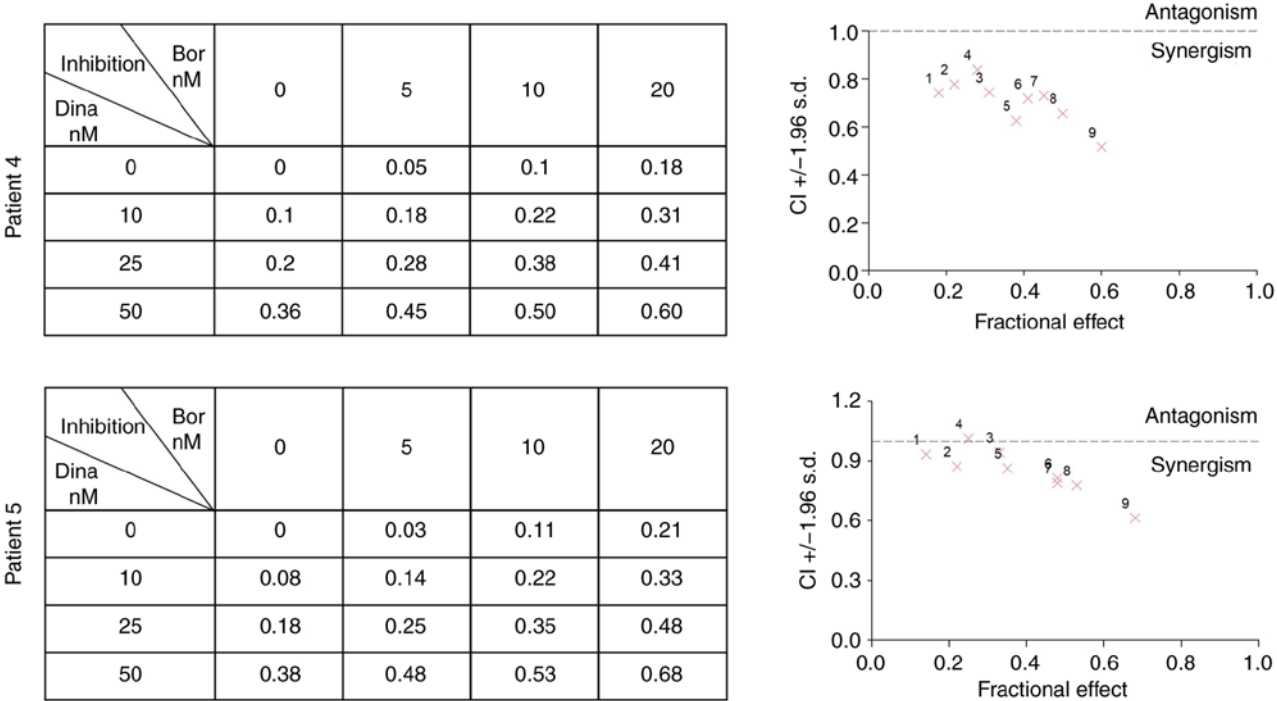


Figure S4. Quantified western blot analysis. Western blot analysis was quantified and the data from (A) Figure 6A and (B) Figure 6B were presented as the mean \pm standard error. * $P < 0.05$. p-IKK, phosphorylated inhibitor of I κ B.

