

Figure S1. The effects of EGCG on the proliferation and apoptosis of normal RPE cells. (A) EGCG (40 $\mu\text{g/ml}$) exerted a limited effect on RPE cell viability. (B and C) EGCG (40 $\mu\text{g/ml}$) exerted a small effect on the apoptotic rate of RPE cells. EGCG, epigallocatechin-3-gallate; UL, upper left; UR, upper right; LL, lower left; LR, lower right.

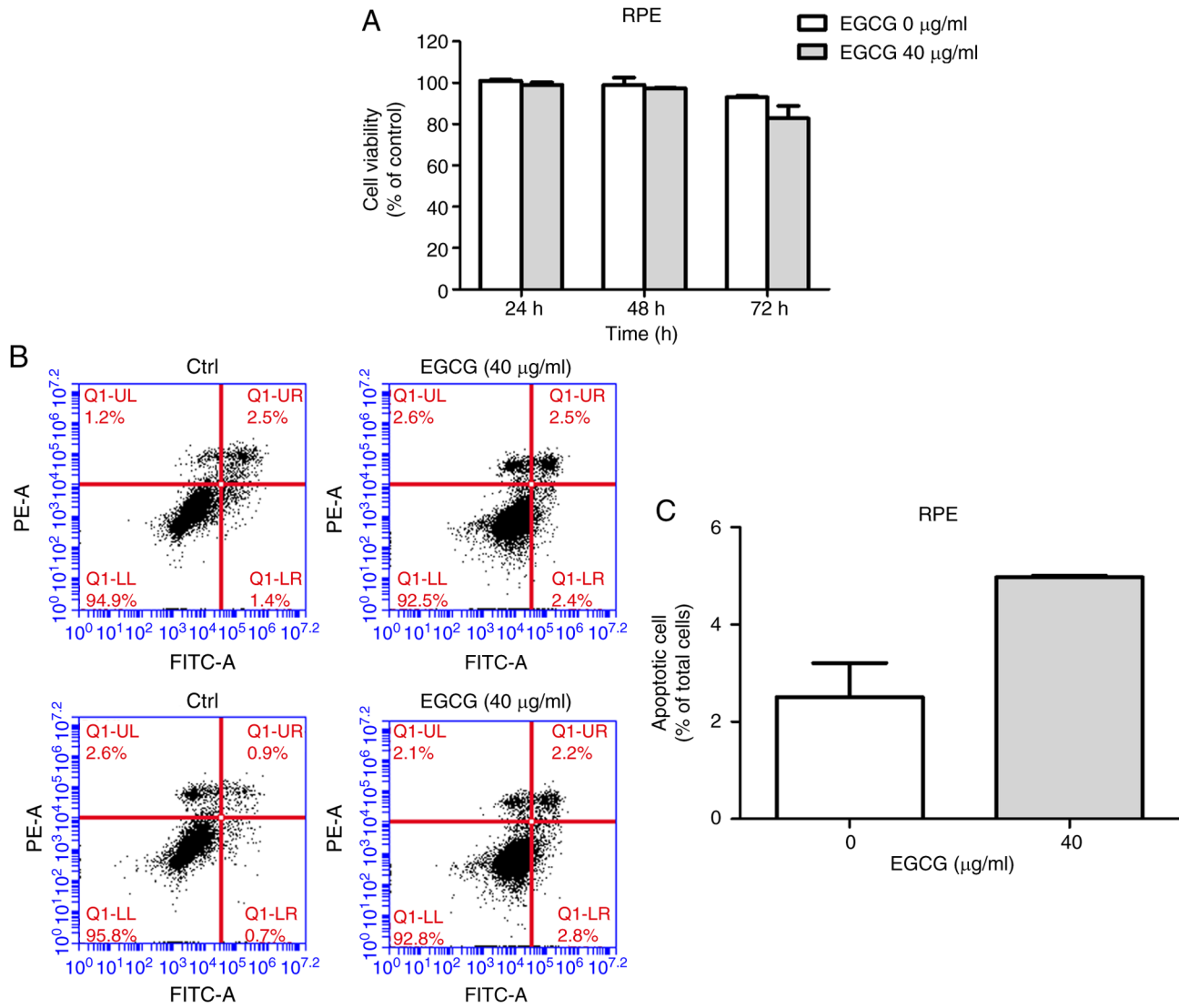


Figure S2. HE staining of the liver of nude mice treated with epigallocatechin-3-gallate.

