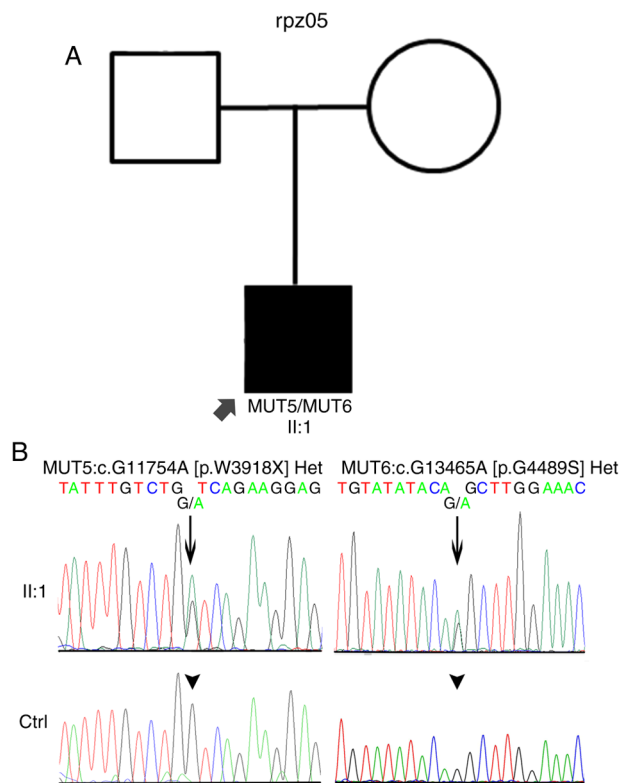


Figure S1. Compound heterozygous USH2A mutations identified in rpz05. (A) Black circle represents affected female; black square represents affected male. Circle represents unaffected female; square represents unaffected male. Arrow indicates the proband. (B) Sanger sequencing data of the proband II:1. MUT5: c.G11754A [p.W3918X] in II:1 is marked by an arrow. The corresponding wild-type allele in the normal control sample is marked by an arrowhead. MUT6: c.G13465A [p.P4489S] in II:1 is marked by an arrow. The corresponding wild-type allele in the normal control sample is marked by an arrowhead. USH2A, Usher syndrome type 2; Ctrl, control.



Compound heterozygous USH2A mutations identified in rpz06. (A) Black circle represents affected female; black square represents affected male. Circle represents unaffected female; square represents unaffected male. Arrow indicates the proband. (B) Sanger sequencing data of the proband II:1. MUT7: c.G8232C [p.W2744C] in II:1 is marked by an arrow. The corresponding wild-type allele in the normal control sample is marked by an arrowhead. MUT8: c.G9328C [p.P3110A] in II:1 is marked by an arrow. The corresponding wild-type allele in the normal control sample is marked by an arrowhead. USH2A, Usher syndrome type 2; Ctrl, control.

