

Figure S1. A wound-healing assay demonstrated that MEIS2-knockdown significantly inhibits migration of CRC cells. CRC, colorectal cancer.

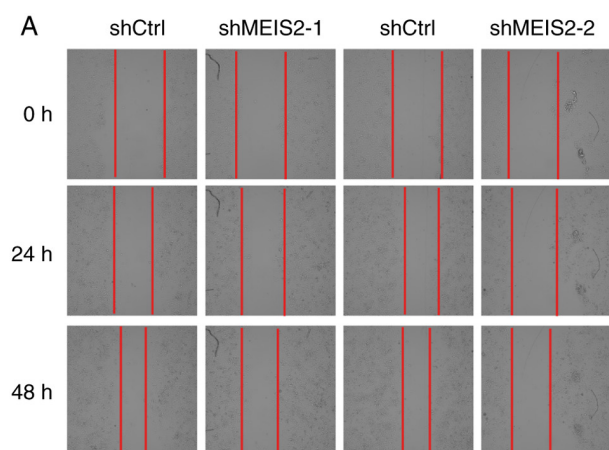


Figure S2. MEIS2 protein were highly expressed in normal rectum, normal colon and CRC samples. (A) MEIS2 protein was highly expressed in a normal colon sample. (B) MEIS2 protein was highly expressed in a normal rectum sample. (C and D) MEIS2 protein was highly expressed in CRC samples. CRC, colorectal cancer.

