

Figure S1. Association of PD-1 and CD38/CD101 expression with serum levels of CA125 and HE4 following surgery and first chemotherapy in patients with ovarian cancer. PD-1, programmed cell death-1; CA125, cancer antigen 125; HE4, human epididymis protein 4.

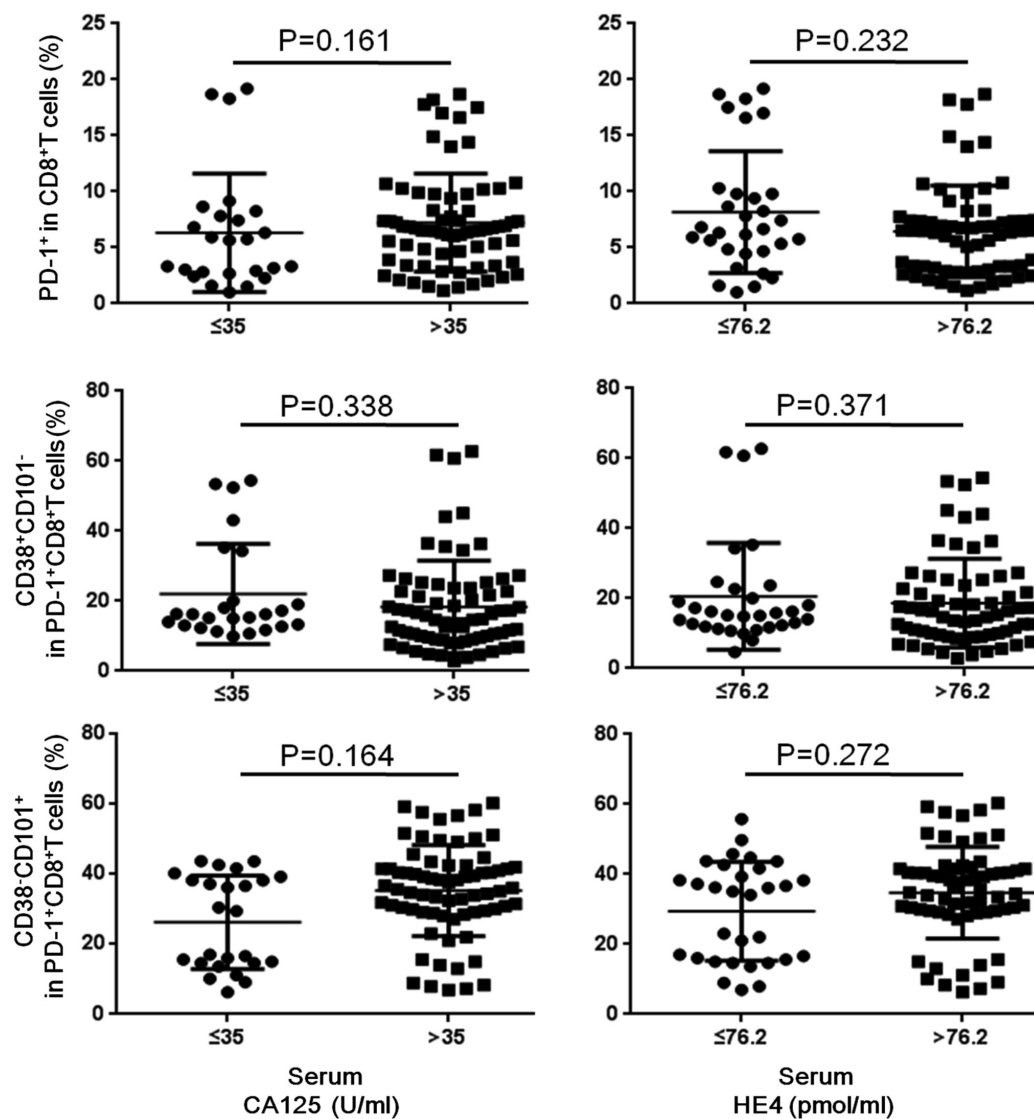


Figure S2. Association of PD-1, CD38 and CD101 expression on TILs with age, pathological grade and lymph node metastasis. PD-1 and CD38/CD101 expression on TILs based on (A) clinical parameters of patients with OC and (B) serum levels of CA125 and HE4 following chemotherapy in patients with OC. PD-1, programmed cell death-1; TILs, tumor-infiltrating lymphocytes; OC, ovarian cancer; CA125, cancer antigen 125; HE4, human epididymis protein 4.

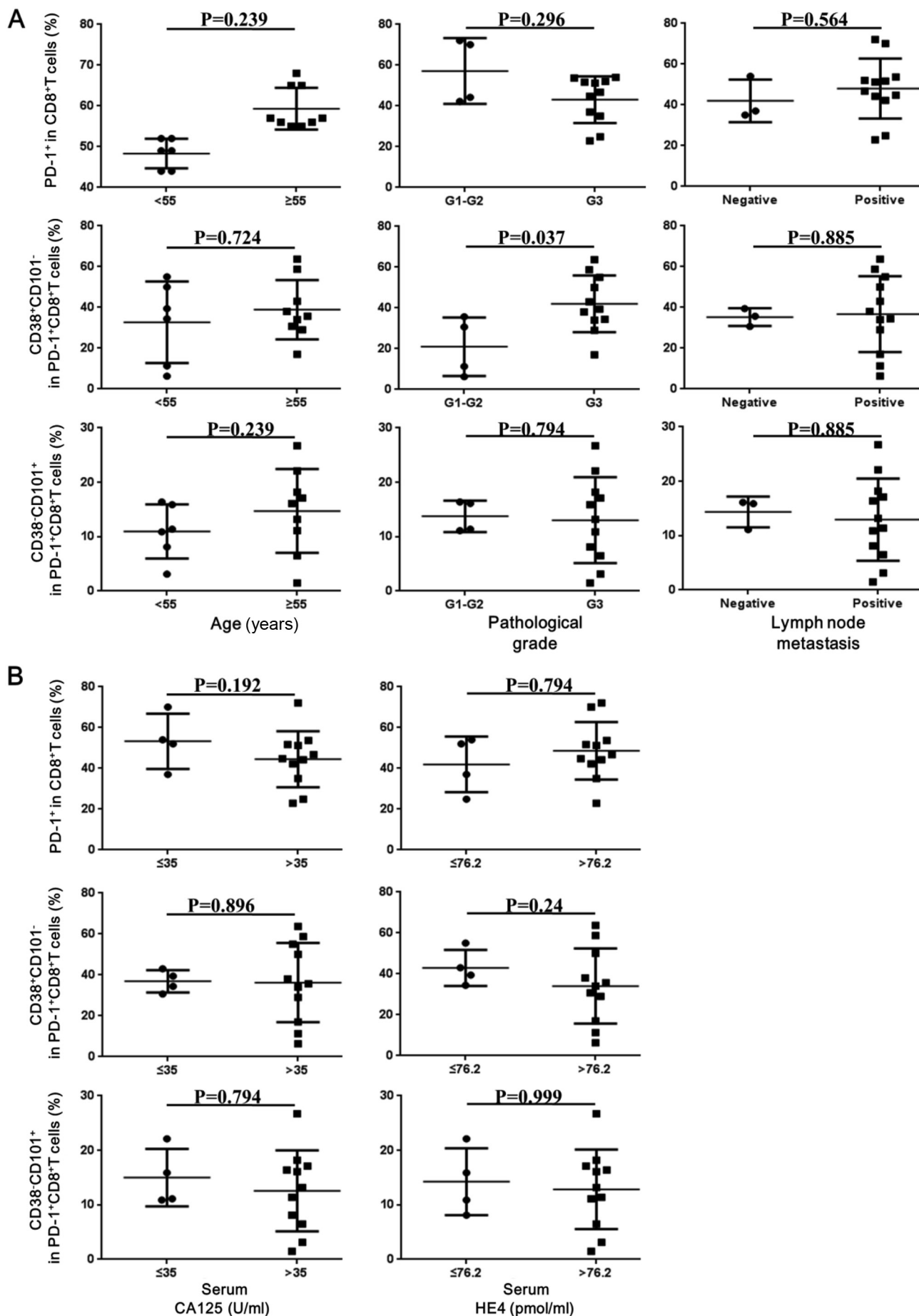


Table SI. Association of PD-1 and CD38/CD101 expression with clinical parameters in patients with ovarian cancer.

Clinicopathological parameters	n	PD-1 ⁺		P-value	CD38 ⁺ CD101 ⁻		P-value	CD38 ⁻ CD101 ⁺		P-value
		Low	High		Low	High		Low	High	
Age (years)				0.304			0.304			0.063
<55	54	30	24		30	24		32	22	
≥55	42	18	24		18	24		16	26	
Pathological grade				0.101			0.101			0.051
Well/moderately differentiated (G1-G2)	45	18	27		18	27		15	20	
Poorly differentiated (G3)	51	30	21		30	21		33	18	
Tumor grade				0.062			0.352			0.062
T1-T2	25	8	17		15	10		17	8	
T3-T4	71	40	31		33	38		31	40	
Lymph node metastasis				0.053			0.251			0.491
N0	26	9	17		16	10		15	11	
N1	70	39	31		32	38		33	37	

All the P-values were calculated using the χ^2 test. PD-1, programmed cell death-1.