

Figure S1. Survival curves of 5 surgery methods and number of patients at risk in different survival time in patients with tumor size <54 mm; tumor size ≥54 mm (P-values represented the significance of the difference among survival curves of the 5 surgery methods in two different tumor-size groups).

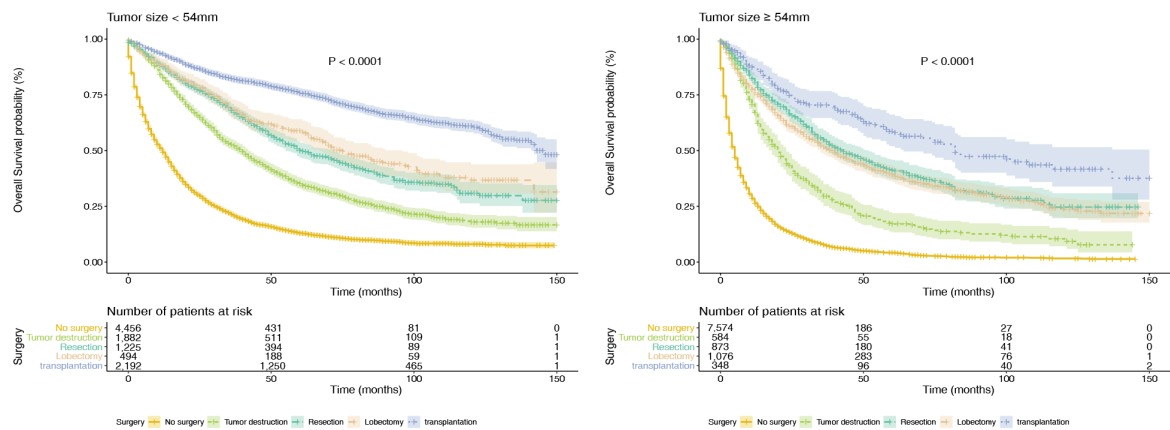


Figure S2. Survival curves of 5 surgery methods and number of patients at risk in different survival time in patients with age <62 years; age ≥62 years (P-values represented the significance of the difference among survival curves of the 5 surgery methods in two different age groups).

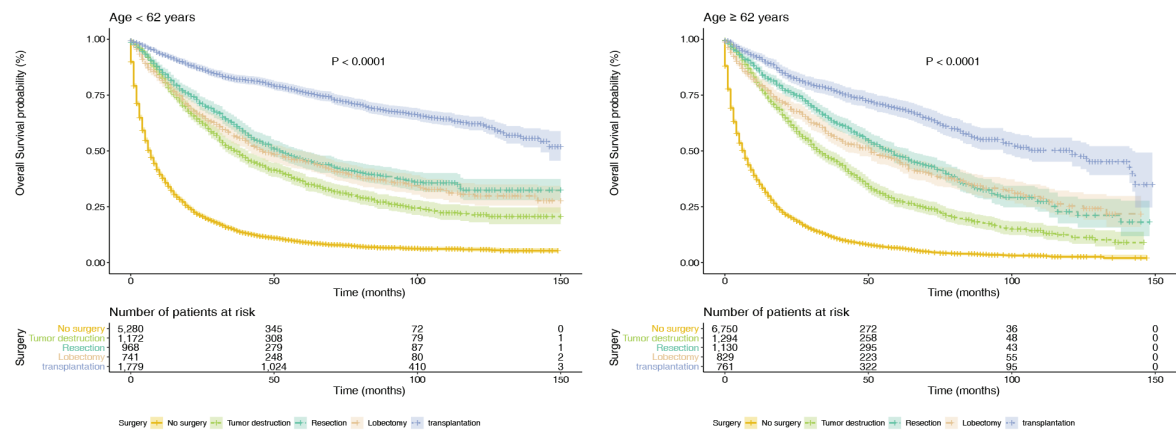


Figure S3. Survival curves of 5 surgery methods and number of patients at risk in different survival time in patients with localized metastasis; regional metastasis; distant metastasis (P-values represented the significance of the difference among survival curves of the 5 surgery methods in three different metastasis groups).

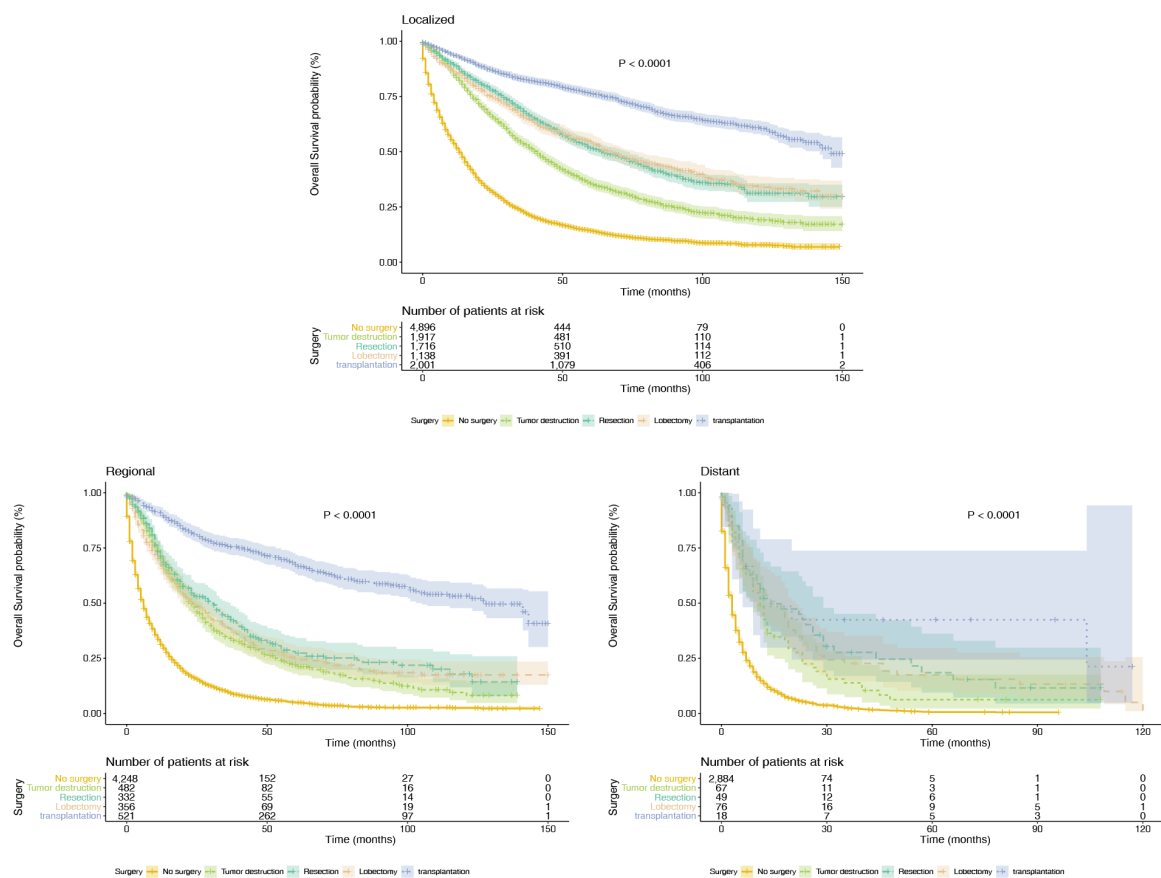


Figure S4. Survival curves of 5 surgery methods and number of patients at risk in different survival time in patients with well-differentiated tumors, moderately differentiated tumors, poorly differentiated tumors and undifferentiated tumors (P-values represented the significance of the difference among survival curves of the 5 surgery methods in four different differentiated groups).

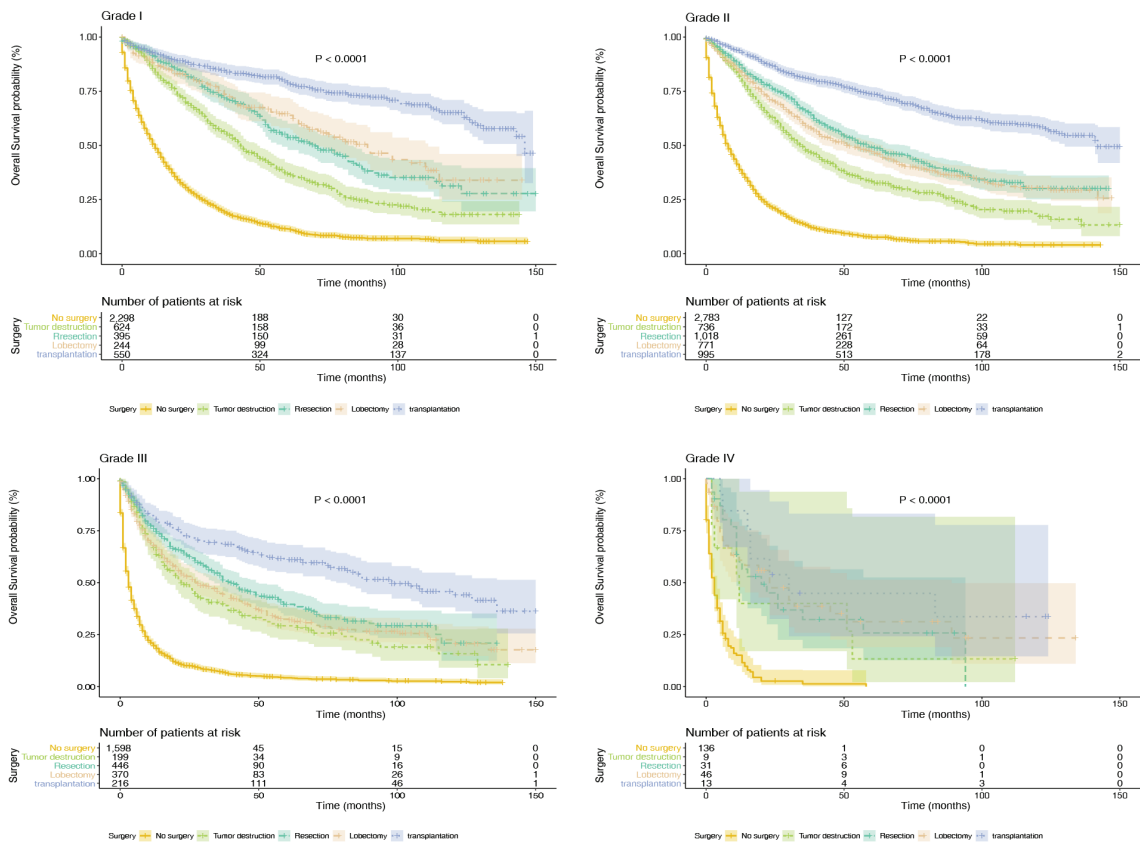


Table SI. Stratified analysis by tumor size.

	No surgery	Local tumor destruction	Wedge or segmental resection	Lobectomy	Liver transplantation
Tumor size <54 mm					
HR	Reference	0.54	0.36	0.30	0.17
95% CI		0.51-0.59	0.33-0.40	0.26-0.35	0.16-0.19
P-value		<0.001	<0.001	<0.001	<0.001
Tumor size, ≥54 mm					
HR	Reference	0.44	0.26	0.27	0.18
95% CI		0.40-0.50	0.24-0.29	0.25-0.30	0.15-0.21
P-value		<0.001	<0.001	<0.001	<0.001

The 10 most important predictors were included in the stratified models. CI, confidence interval; HR, hazards ratio.

Table SII. Stratified analysis by age.

	No surgery	Local tumor destruction	Wedge or segmental resection	Lobectomy	Liver transplantation
Age, <62 years					
HR	Reference	0.49	0.34	0.31	0.15
95% CI		0.45-0.54	0.31-0.38	0.28-0.34	0.14-0.17
P-value		<0.001	<0.001	<0.001	<0.001
Age, ≥62 years					
HR	Reference	0.47	0.28	0.27	0.18
95% CI		0.43-0.50	0.25-0.31	0.25-0.31	0.16-0.20
P-value		<0.001	<0.001	<0.001	<0.001

The 10 most important predictors were included in the stratified models. CI, confidence interval; HR, hazards ratio.

Table SIII. Stratified analysis by historic stage.

	No surgery	Local tumor destruction	Wedge or segmental resection	Lobectomy	Liver transplantation
Localized					
HR	Reference	0.49	0.30	0.26	0.16
95% CI		0.45-0.52	0.28-0.33	0.24-0.29	0.15-0.18
P-value		<0.001	<0.001	<0.001	<0.001
Regional					
HR	Reference	0.48	0.34	0.32	0.16
95% CI		0.43-0.54	0.29-0.39	0.28-0.37	0.13-0.18
P-value		<0.001	<0.001	<0.001	<0.001
Distant					
HR	Reference	0.49	0.30	0.35	0.24
95% CI		0.38-0.64	0.21-0.42	0.27-0.45	0.13-0.44
P-value		<0.001	<0.001	<0.001	<0.001

The 10 most important predictors were included in the stratified models. CI, confidence interval; HR, hazards ratio.

Table SIV. Stratified analysis by grade.

	No surgery	Local tumor destruction	Wedge or segmental resection	Lobectomy	Liver transplantation
Grade I					
HR	Reference	0.49	0.30	0.26	0.16
95% CI		0.43-0.55	0.26-0.36	0.21-0.32	0.13-0.19
P-value		<0.001	<0.001	<0.001	<0.001
Grade II					
HR	Reference	0.47	0.29	0.28	0.15
95% CI		0.42-0.52	0.26-0.33	0.25-0.31	0.13-0.17
P-value		<0.001	<0.001	<0.001	<0.001
Grade III					
HR	Reference	0.43	0.31	0.32	0.19
95% CI		0.36-0.53	0.26-0.36	0.28-0.37	0.15-0.23
P-value		<0.001	<0.001	<0.001	<0.001
Grade IV					
HR	Reference	0.34	0.29	0.19	0.15
95% CI		0.15-0.79	0.17-0.49	0.12-0.31	0.07-0.34
P-value		0.012	<0.001	<0.001	<0.001

The 10 most important predictors were included in the stratified models. CI, confidence interval; HR, hazards ratio