

	MC-3				YD-15			
Oridonin (μM)	0	7.5	15	30	0	6.25	12.5	25
Bcl-xL								
Active-Bak								
Active-Bax								
Bak								
Bax								
Bim _{EL}								
Bim _L								
Bim _S								
Actin								

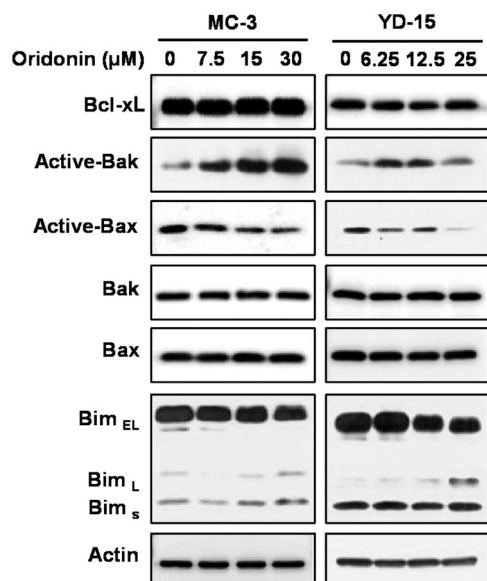


Figure S2. Effect of oridonin on MCL-1 protein turnover in MEC cell lines. (A and B) Effect of oridonin on MCL-1 protein turnover was determined by western blot analysis in MC-3 and YD-15 cells pre-treated with cycloheximide (CHX; 0.05 μ g/ml) with or without oridonin (30 μ M) for 3, 6 and 12 h. Graph shows the means \pm SD of 3 independent experiments. * P <0.05, significant difference compared with the control group. MEC, mucoepidermoid carcinoma; MCL-1, myeloid cell leukemia-1.

