

Figure S1. Cell transfection efficiency. Relative expression of MIAT was assessed by RT-qPCR in SRA01/04 cells transfected with (A) si-NC, si-MIAT, (B) pcDNA and MIAT. Relative expression of miR-181a was assessed by RT-qPCR in SRA01/04 cells transfected with (C) miR-NC, miR-181a, (D) anti-miR-NC and anti-miR-181a. Relative expression of CTGF was assessed by (E) RT-qPCR and (F) western blotting in SRA01/04 cells transfected with pcDNA or CTGF. \*P<0.05 vs. the control group. MIAT, myocardial infarction associated transcript; RT-qPCR, reverse transcription-quantitative PCR; si, small interfering RNA; NC, negative control; miR, microRNA; CTGF, connective tissue growth factor.

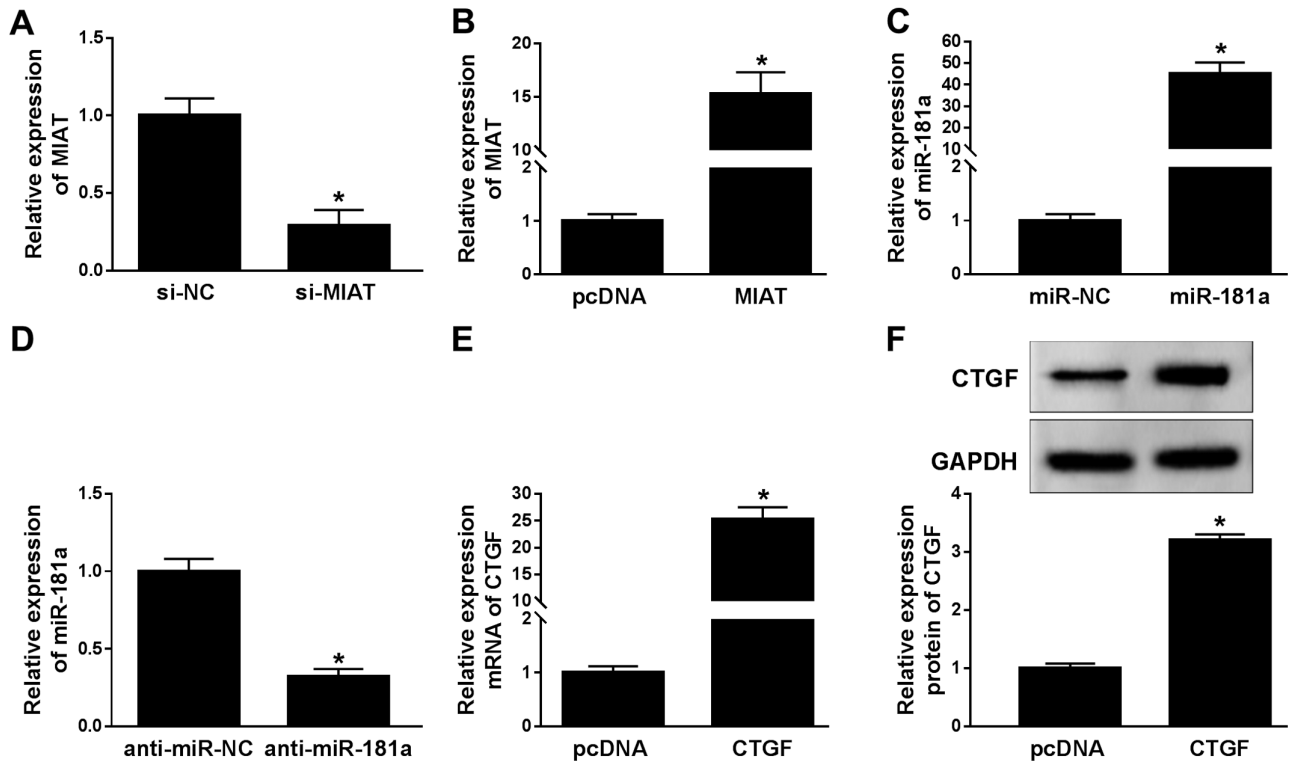


Figure S2. MIAT overexpression facilitates SRA01/04 cell proliferation, migration, epithelial-mesenchymal transition and extra-cellular matrix production. SRA01/04 cells were transfected with pcDNA or MIAT. (A) Cell viability was assessed using the MTT assay. (B) SRA01/04 cell migration was analysed using the Transwell assay. (C) Protein expression levels of  $\alpha$ -SMA, FN and COL-1 were detected by western blotting. \* $P < 0.05$  vs. the control group. MIAT, myocardial infarction associated transcript;  $\alpha$ -SMA,  $\alpha$ -smooth muscle actin; FN, fibronectin; COL-1, collagen I.

