

Figure S1. Overexpression of KLF6 promotes human glomerular mesangial cell proliferation. The cell proliferation in the different groups is presented. ** $P < 0.01$, KLF6 vs. pcDNA3.1 group. KLF6, kruppel-like factor 6; OD, optical density.

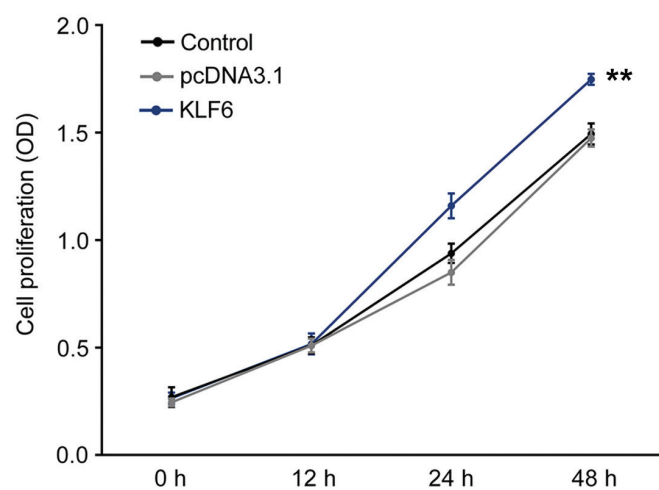


Figure S2. Overexpression of KLF6 suppresses human glomerular mesangial cell apoptosis. (A-C) Representative flow cytometry dot plots for (A) Control group, (B) pcDNA3.1 group and (C) KLF6 group. (D) The corresponding results for A-C are presented. ** $P < 0.01$, KLF6 vs. pcDNA3.1 group. KLF6, kruppel-like factor 6; Q, quadrant.

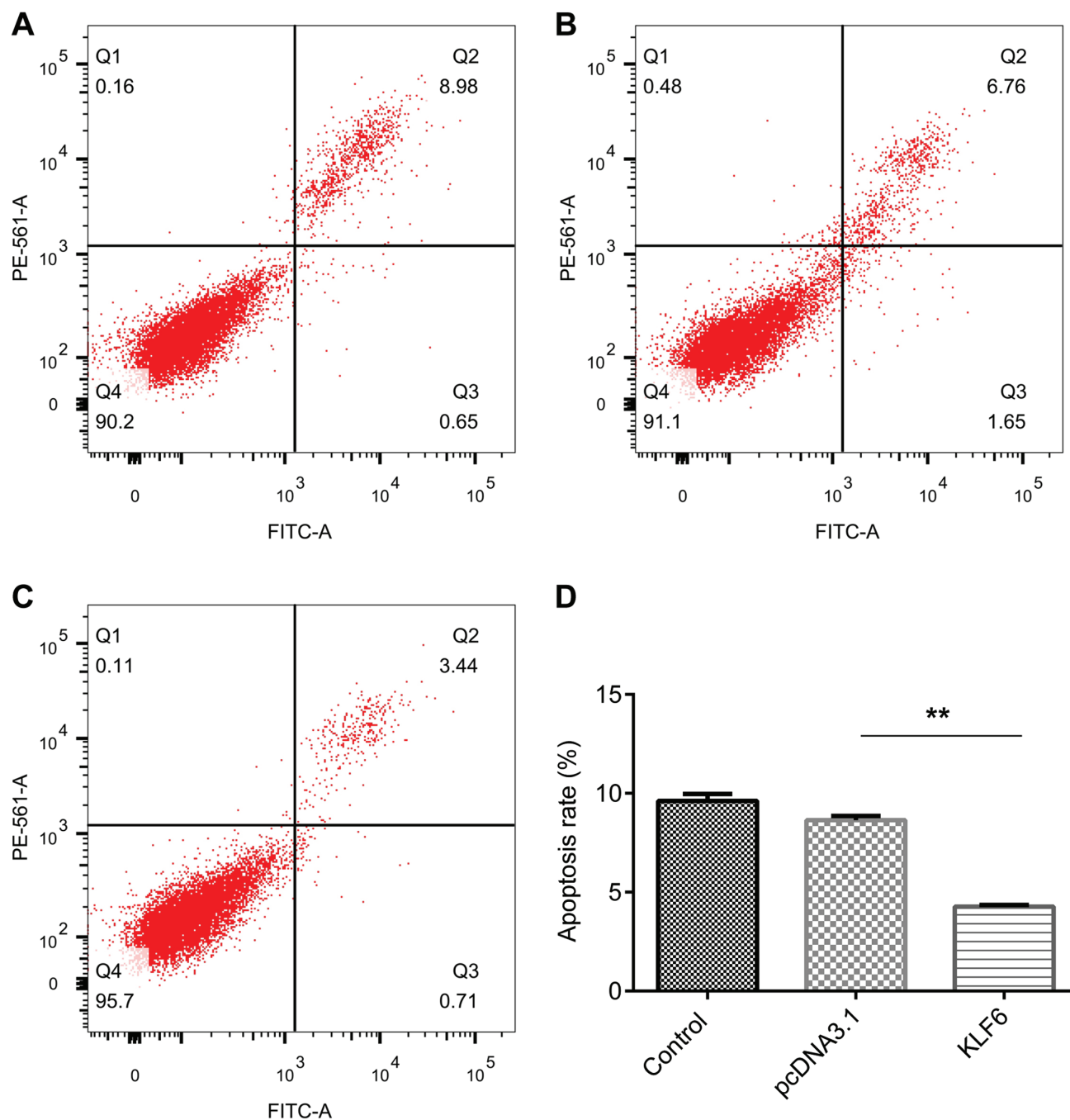


Figure S3. KLF6 may regulate human glomerular mesangial cell proliferation and apoptosis via the Wnt/ β -catenin signaling pathway. The protein expression levels of the associated factors in different groups were assessed by western blot analysis. KLF6, kruppel-like factor 6.

