

Figure S1. Proof of transfection. (A) Transfection efficiency of (A) miR-199a-3p mimics and (B) pcDNA-HMGB1 in Ecto and Endo cells. (C) Transfection efficiency of miR-199a-3p mimics in mice. (D) Transfection efficiency of pcDNA-TLR4 in Ecto and Endo cells. (E) Transfection efficiency of pcDNA-HMGB1 in mice. ** $P < 0.01$. miR, microRNA; HMGB1, high-mobility group box 1 protein; TLR4, toll-like receptor 4; Ecto, ectocervical; Endo, endocervical; WT, wild type; NC, negative control.

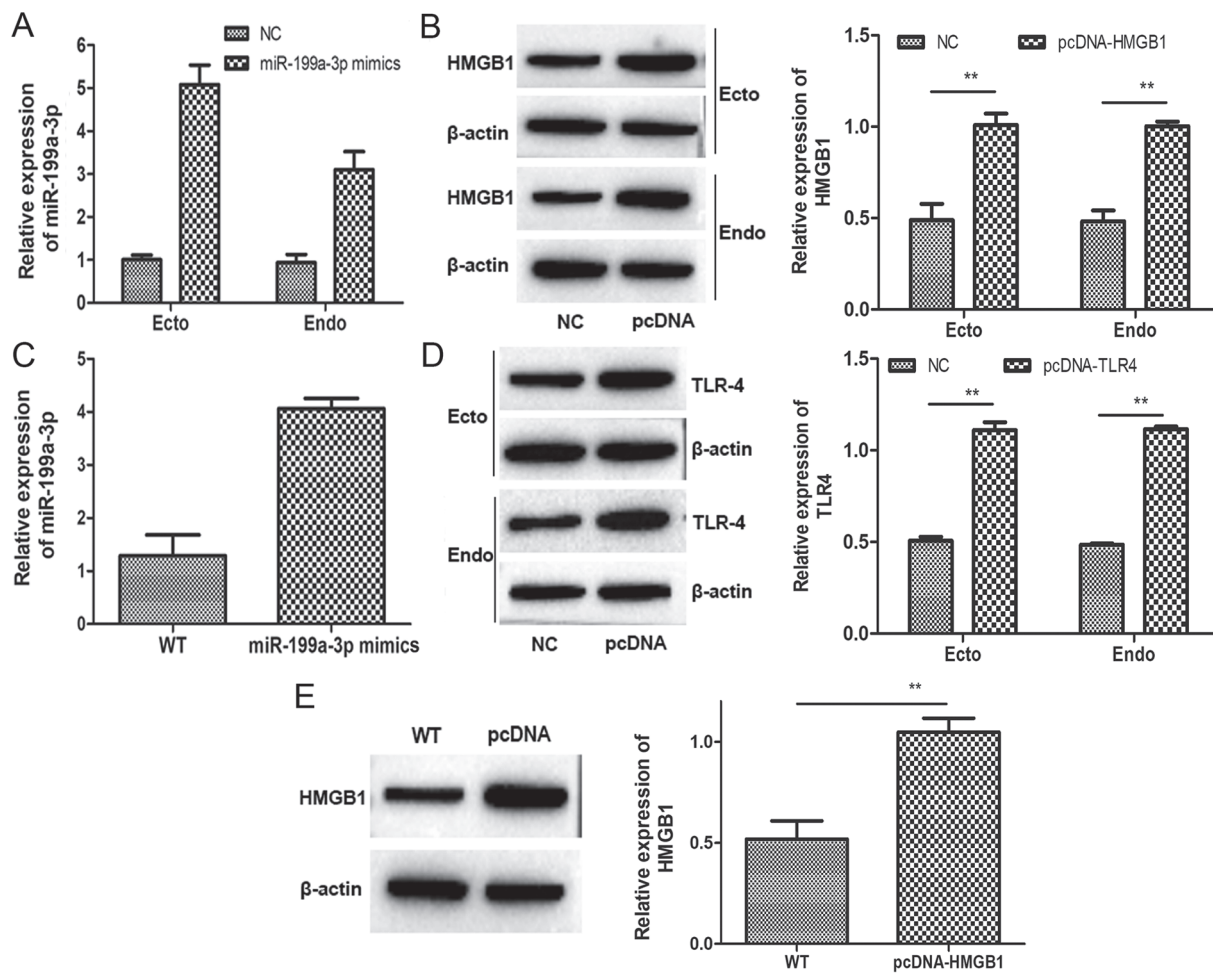


Table S1. Baseline characteristics of the participants.

Patient characteristics	PTB (n=52)	PPROM (n=60)	TB (n=70)	P-value
Maternal age, years, median (IOR) ^a	31.19 (19-46)	30.55 (22-41)	31.94 (22-41)	NS
Maternal weight, kg, median (IOR) ^a	67.52 (50-88)	68.74 (53-90)	70.06 (56-94)	NS
Body mass index, kg/m ² , median (IOR) ^a	24.16 (19.43-34.15)	25.71 (20.17-35.46)	27.09 (20.55-37.78)	NS
Primiparity, n (%) ^b	43 (82.69)	54 (90)	63 (90)	NS
Gestational age at delivery, weeks, median (IOR) ^a	34.44 (28-36)	33.98 (28-36)	39.11 (37-41.3)	NS
Birth weight, g, median (IOR) ^a	1,514.5 (770-1,910)	1,923.33 (900-2,350)	3,177.86 (2,250-4,050)	NS
Cesarean section, n (%) ^b	28 (53.85)	37 (61.67)	47 (67.14)	NS

^aKruskal-Wallis test. ^bFisher's Exact test. PTB, preterm birth without preterm premature rupture of membranes; PPROM, preterm premature rupture of membranes; TB, term birth; IOR, interquartile range; NS, non-significant.