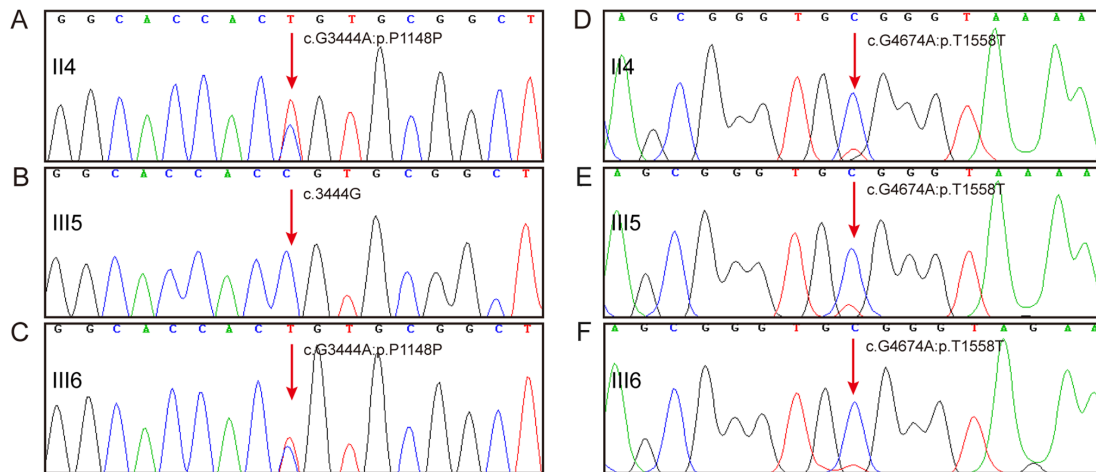


Figure S1. Sanger sequencing results demonstrating the synonymous variants c.G3444A:p.P1148P and c.G4674A:p.T1558T. (A) Nest PCR product from the proband (II4) of c.G3444A:p.P1148P. (B and C) Nest PCR product from the daughters (III5 and III6) of c.G3444A:p.P1148P. (D) Nest PCR product from the proband (II4) of c.G4674A:p.T1558T. (E and F) Nest PCR product from the daughters (III5 and III6) of c.G4674A:p.T1558T. The involved primers are listed below the figures. Arrows indicate the position of the duplication variant or the corresponding wild-type base. PCR, polymerase chain reaction.



Primers:

PKD1 exon 13-15

forward: TTCTGCTCTGCTTCATGCTG

reverse: TGGTAAATGGCTCGGAGG

c.G3444A:p.P1148P

forward: GGGGAGGCGGCCACCATCAG

reverse: GTGCGGGGGCTCGTCGTCAA

c.G4674A:p.T1558T

forward: GGGTGGGGGCGGCTTCCTC

reverse: CCTCCGTGGCTGTGGGTGTGA