

Figure S1. Western blot analysis of endometrial LIF protein levels of patients in the mNC and HT+3GnRHa groups on the day of embryo transfer. LIF, leukemia inhibitory factor; mNC, modified natural cycle; HT+3GnRHa, hormone therapy and 3 GnRHa, E2 and P4 treatment cycles.

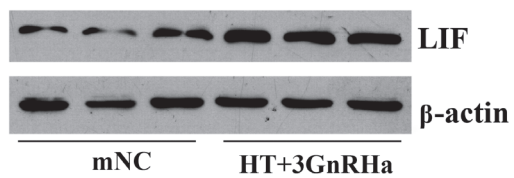


Table SI. Baseline characteristics of patients subjected to endometrial biopsies.

Characteristic	Type of endometrial preparation				
	NC	HT	HT+1 GnRHa	HT+2 GnRHa	HT+3 GnRHa
Total no. of endometrial biopsies	15	19	17	21	19
Age, years	30.17±2.31	31.03±2.19	30.81±1.97	31.27±2.09	30.88±2.02
BMI, kg/m ²	22.03±1.57	21.93±1.62	21.64±1.43	21.09±1.83	21.32±1.67
Etiology of infertility, n					
Male factor	3	3	5	4	3
Tubal factor	10	15	12	14	16
Other	2	1	0	3	0
Fertility status, n					
Primary subfertility	11	15	11	11	12
Secondary infertility	4	4	6	10	7
Duration of infertility, years	3.43	2.87	3.24	3.16	2.95
Previous fresh cycles, n					
IVF	13	18	14	19	18
IVF-ICSI	2	1	3	2	1
No. of ET prior to the current ET					
0	5	5	2	4	4
1	5	4	5	6	7
2	3	4	6	5	3
≥3	2	6	4	6	5

Data are presented as the mean ± SD, n or mean. 1, 2 and 3 refer to the number of cycles of GnRHa, estradiol and progesterone treatment. GnRHa, gonadotropin-releasing hormone agonist; BMI, body mass index; IVF, *in vitro* fertilization; IVF-ICSI, *in vitro* fertilization and intracytoplasmic sperm injection, no., number; ET, embryo transplantation.

Table SII. Predicted consequential pairing between miR-223-3p and LIF 3'-UTR.

Sequence name	Sequence details
LIF 3'-UTR	3'-acCCCAUAAACUGUUUGACUGu-5'
miR-223-3p	5'-gtGGGGATGTTTCATACTGACa-3'
Lowercase letters indicate unpaired bases. Italicized capital letters indicate paired bases. 3'-UTR, 3'-untranslated region; miR, microRNA; LIF, leukemia inhibitory factor.	