

Figure S1. The expression of *SCGB2A1* mRNA in cancer cell lines from the Broad Institute Cancer Cell Line Encyclopedia database. The x axis represents different cancer cell lines, and the y axis represents *SCGB2A1* mRNA expression values. *SCGB2A1*, secretoglobin family 2A member 1.

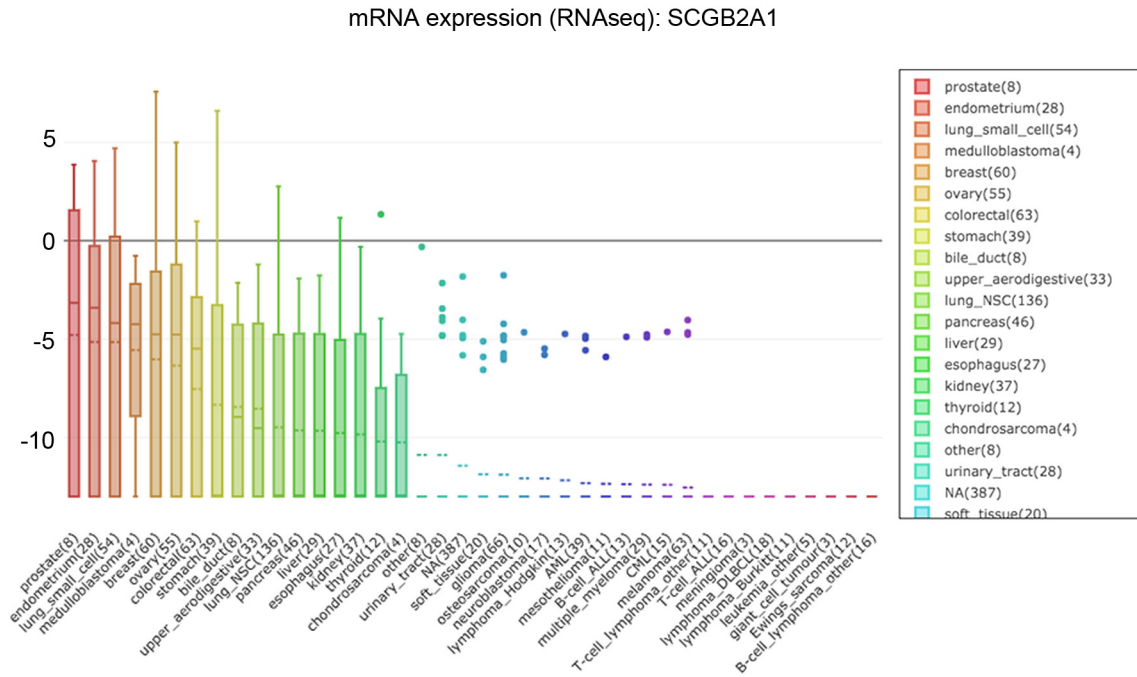


Figure S2. *SCGB2A1* expression in two patients with endometrial cancer detected by immunohistochemistry from the The Human Protein Atlas database. The expression of *SCGB2A1* in endometrial cancer was strong positive in brown color. *SCGB2A1*, secretoglobulin family 2A member 1.

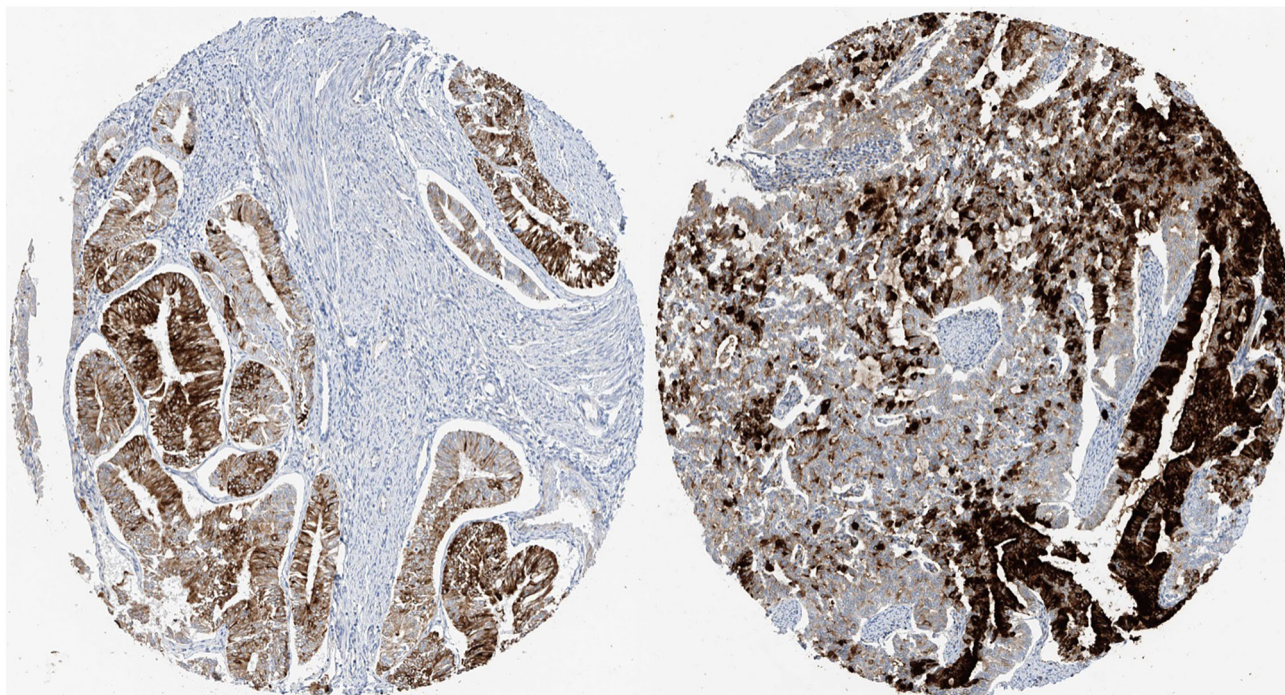


Figure S3. DNA methylation analysis of *SCGB2A1* in UCEC using the Mexpress tool. The solid lines represent six *SCGB2A1* methylation sites and r-value represents the correlation between *SCGB2A1* DNA methylation and *SCGB2A1* gene expression regulation. Probe 1 =cg01919620,  $r=-0.017$ ,  $P>0.05$ ; probe 2 =cg05277881,  $r=-0.339$ ,  $P<0.001$ ; probe 3 =cg16986846,  $r=-0.210$ ,  $P<0.001$ ; probe 4 =cg06334737,  $r=-0.295$ ,  $P<0.001$ ; probe 5=cg23206745,  $r=-0.378$ ,  $P<0.001$  and probe 6=cg14265033,  $r=-0.198$ ,  $P<0.001$ . *SCGB2A1*, secretoglobin family 2A member 1.



Table SI. Clinical characteristics of 47 patients with endometrial cancer from the Fudan University Shanghai Cancer Center.

Clinical characteristics	Number (%)
Age at diagnosis <sup>a</sup> , years	52 (42-69)
Race	
White	0 (0)
Black or African American	0 (0)
Other	47 (100)
Menopause status	
Pre	12 (25.53)
Post	35 (74.47)
Surgical approach	
Minimally invasive	
Open	47 (100)
Histological type	
Serous endometrial adenocarcinoma	8 (17.02)
Endometrioid endometrial adenocarcinoma	39 (82.98)
Mixed serous and endometrioid	0 (0)
Grade	
Low G1	38 (80.85)
Moderate G2	9 (19.15)
High G3	0 (0)
Tumor invasion depth, %	
<50%	43 (91.49%)
≥50%	4 (8.51%)
Tumor status	
Tumor free	2 (4.26)
With tumor	45 (95.74)
Residual tumor	
No residual R0	47 (100)
With residual R1/R2	0 (0)
Peritoneal washing	
Negative	47 (100)
Positive	0 (0)
Pelvic lymph node metastasis	
Negative	43 (91.49)
Positive	4 (8.51)
Para-aortic lymph node	
Negative	47 (100)
Positive	0 (0)
Stage	
I	39 (82.98)
II	4 (8.51)
III	4 (8.51)
IV	0 (0)

<sup>a</sup>Presented as median (range).