

Figure S1. Survival curve of IL-8 in overall survival estimation of 34 patients with T-cell non-Hodgkin's lymphoma (P=0.038). IL-8, interleukin-8.

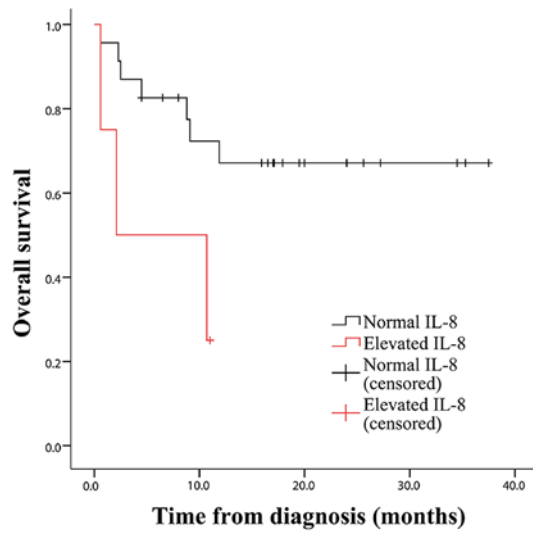


Figure S2. Survival curves of (A) CRP, (B) LDH and (C) IL-6 in overall survival estimation of 86 patients with B-cell non-Hodgkin's lymphoma (P=0.006, P=0.003 and P=0.004, respectively). CRP, C-reactive protein; IL, interleukin; LDH, lactate dehydrogenase.

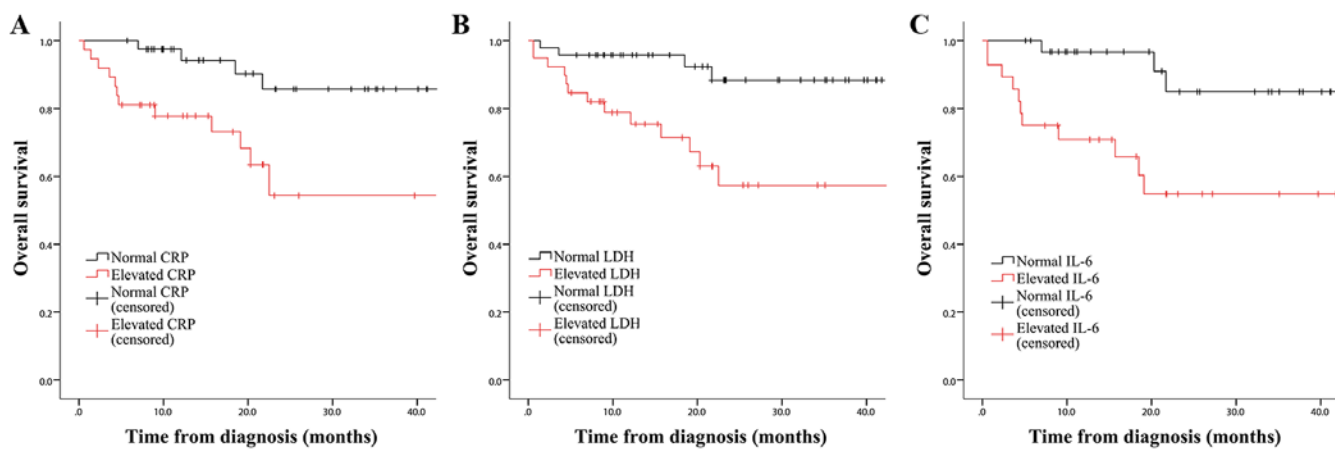


Figure S3. Survival curves of (A) CRP, (B) LDH and (C) IL-8 in overall survival estimation of 104 patients with aggressive non-Hodgkin's lymphoma ( $P=0.003$ ,  $P=0.031$  and  $P=0.013$ , respectively). CRP, C-reactive protein; IL, interleukin; LDH, lactate dehydrogenase.

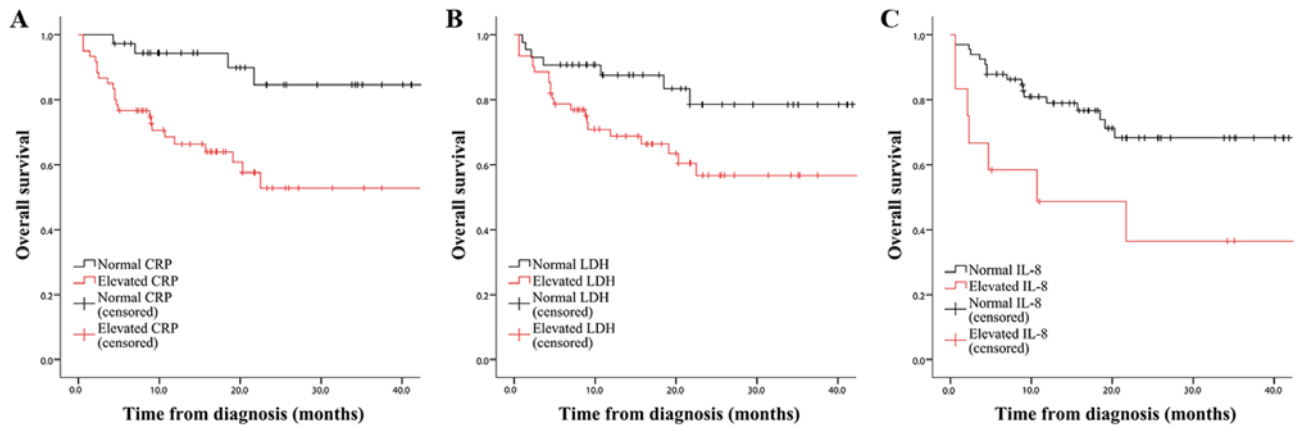


Figure S4. Survival curve of SUVmax-biopsy in progression-free survival estimation of 34 patients with T-cell non-Hodgkin's lymphoma (P=0.022). SUVmax, maximal standardized uptake value.

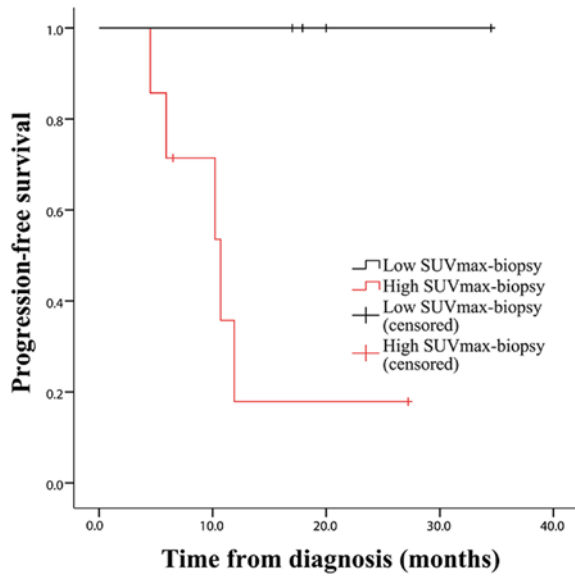


Figure S5. Survival curves of (A) CRP, (B) LDH and (C) IL-6 in progression-free survival estimation of 86 patients with B-cell non-Hodgkin's lymphoma ( $P=0.004$ ,  $P=0.006$  and  $P=0.007$ , respectively). CRP, C-reactive protein; IL, interleukin; LDH, lactate dehydrogenase.

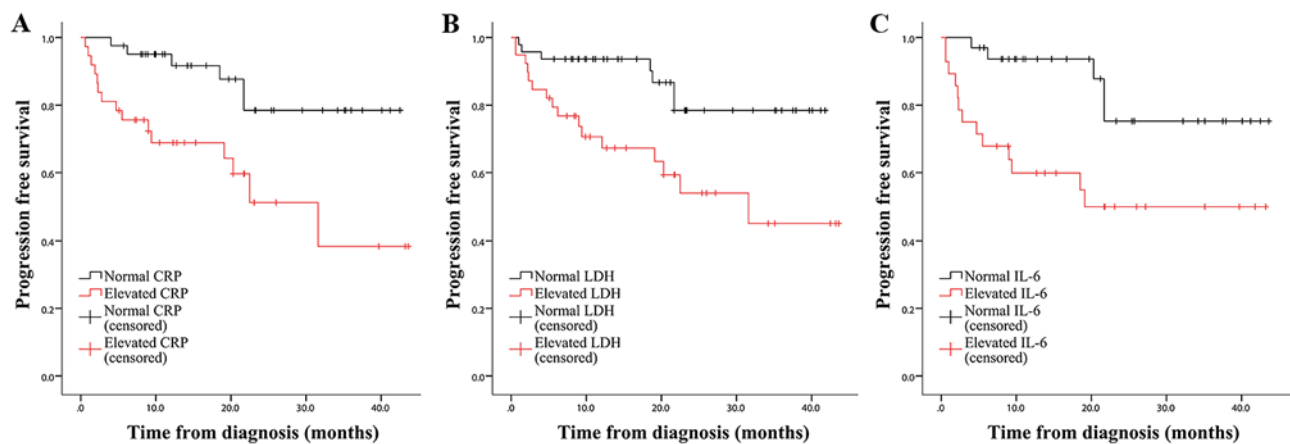


Figure S6. Survival curve of CRP in progression-free survival estimation of 104 patients with aggressive non-Hodgkin's lymphoma (P=0.002). CRP, C-reactive protein.

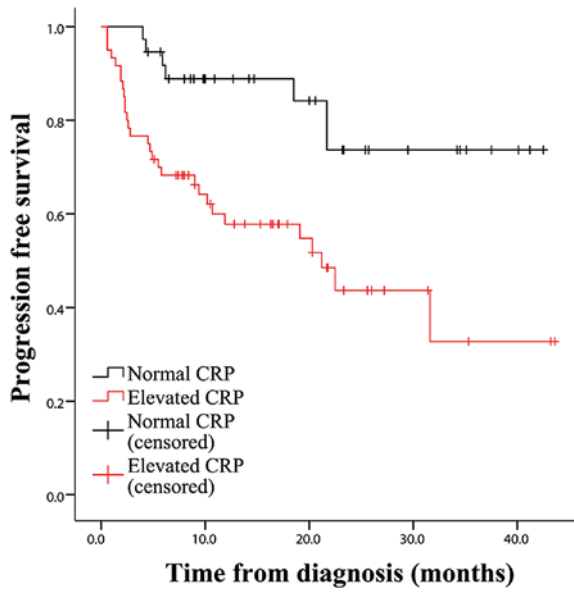


Figure S7. Examples of Ki67 immunohistochemical staining for different types of NHL. (A) A small portion of neoplastic cells of MALT lymphoma showed strong staining for Ki67 (20%). Magnification, x200. (B) Some neoplastic cells of MCL showed strong staining for Ki67 (35%), some of them showed weak to moderate staining. Magnification, x200. (C) Some neoplastic cells of AITL showed strong staining for Ki67 (50%). Magnification, x200. (D) The majority of neoplastic cells of DLBCL were diffusely positive for Ki67 staining (90%). Magnification, x200. Arrows representative of tumor cells stained with Ki67 antibody. NHL, non-Hodgkin's lymphoma; MALT, mucosa-associated lymphoid tissue lymphoma; MCL, mantle cell lymphoma; AITL, angioimmunoblastic T-cell lymphoma; DLBCL, diffuse large B-cell lymphoma.

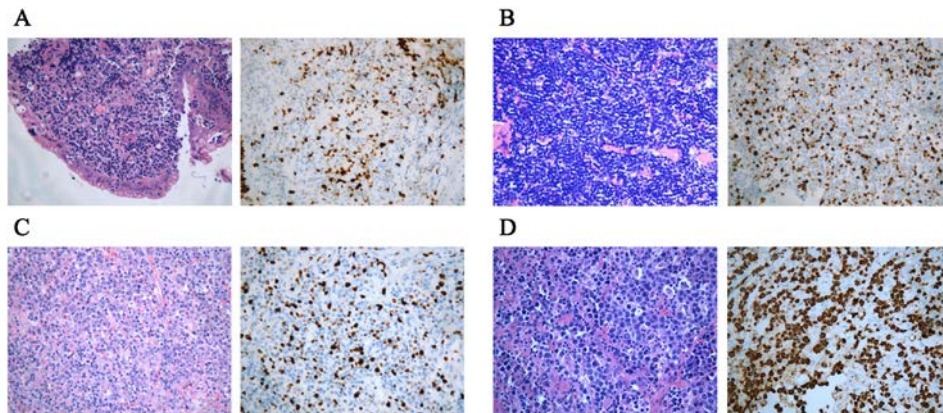


Table SI. Correlations among serological factors, SUVmax and Ki67% in 34 patients with T-NHL and 86 patients with B-NHL.

A, T-NHL																
Indicators	CRP		IL-6		IL-2R		IL-8		TNF- $\alpha$		SUVmax-overall		SUVmax-biopsy		Ki67%	
	r	P-value	r	P-value	r	P-value	r	P-value	r	P-value	r	P-value	r	P-value	r	P-value
LDH	0.116	0.527	0.320	0.104	0.552	<0.01 <sup>b</sup>	0.098	0.626	0.767	<0.001 <sup>c</sup>	0.133	0.681	0.346	0.298	0.144	0.474
$\beta$ 2-mg	0.201	0.336	0.182	0.406	0.446	0.033 <sup>a</sup>	0.317	0.141	0.552	<0.01 <sup>b</sup>	-0.321	0.365	-0.250	0.516	0.154	0.506
Ferritin	0.524	<0.01 <sup>b</sup>	0.419	0.030 <sup>a</sup>	0.409	0.034 <sup>a</sup>	0.290	0.142	0.390	0.045 <sup>a</sup>	0.305	0.336	0.400	0.223	0.172	0.402
SUVmax-overall	-0.119	0.713	0.382	0.247	0.1	0.770	-0.451	0.164	0.1	0.770					0.381	0.248
SUVmax-biopsy	0.000	>0.999	0.318	0.340	0.191	0.574	-0.278	0.408	0.018	0.958					0.606	0.048 <sup>a</sup>
Ki67%	-0.132	0.520	0.095	0.668	0.241	0.267	0.322	0.134	0.078	0.725	0.381	0.248	0.606	0.048 <sup>a</sup>		

B, B-NHL																
Indicators	CRP		IL-6		IL-2R		IL-8		TNF- $\alpha$		SUVmax-overall		SUVmax-biopsy		Ki67%	
	r	P-value	r	P-value	r	P-value	r	P-value	r	P-value	r	P-value	r	P-value	r	P-value
LDH	0.539	<0.001 <sup>c</sup>	0.626	<0.001 <sup>c</sup>	0.616	<0.001 <sup>c</sup>	0.083	0.523	0.556	<0.001 <sup>c</sup>	-0.046	0.824	-0.158	0.452	0.087	0.439
$\beta$ 2-mg	0.478	<0.001 <sup>c</sup>	0.627	<0.001 <sup>c</sup>	0.713	<0.001 <sup>c</sup>	0.011	0.936	0.633	<0.001 <sup>c</sup>	0.381	0.089	0.282	0.216	-0.212	0.076
Ferritin	0.458	<0.001 <sup>c</sup>	0.411	<0.01 <sup>b</sup>	0.267	0.042 <sup>a</sup>	-0.137	0.305	0.149	0.263	0.180	0.446	0.161	0.498	0.296	0.012 <sup>a</sup>
SUVmax-overall	0.123	0.576	0.062	0.789	-0.205	0.372	-0.236	0.302	0.013	0.955					0.404	0.050
SUVmax-biopsy	0.017	0.939	-0.188	0.428	-0.280	0.231	-0.349	0.132	-0.253	0.283					0.456	0.022 <sup>a</sup>
Ki67%	0.033	0.778	0.126	0.346	-0.120	0.370	0.096	0.475	-0.163	0.222	0.404	0.050	0.456	0.022 <sup>a</sup>		

<sup>a</sup>P<0.05; <sup>b</sup>P<0.01; <sup>c</sup>P<0.001. CRP, C-reactive protein; IL-6, interleukin-6; IL-2R, interleukin-2 receptor; IL-8, interleukin-8; TNF- $\alpha$ , tumor necrosis factor- $\alpha$ ; LDH, lactate dehydrogenase;  $\beta$ 2-mg,  $\beta$ 2-microglobulin; SUVmax, maximal standardized uptake value; Ki67%, ratio of Ki67; NHL, non-Hodgkin's lymphoma.



Table SII. Correlations among serological factors, SUV max and Ki67% in 104 patients with aggressive non-Hodgkin's lymphoma.

Indicators	CRP		IL-6		IL-2R		IL-8		TNF- $\alpha$		SUVmax-overall		SUVmax-biopsy		Ki67%	
	r	P-value	r	P-value	r	P-value	r	P-value	r	P-value	r	P-value	r	P-value	r	P-value
LDH	0.490	<0.001 <sup>c</sup>	0.548	<0.001 <sup>c</sup>	0.619	<0.001 <sup>c</sup>	0.048	0.675	0.677	<0.001 <sup>c</sup>	0.025	0.882	0.008	0.964	-0.101	0.335
$\beta$ 2-mg	0.516	<0.001 <sup>c</sup>	0.527	<0.001 <sup>c</sup>	0.649	<0.001 <sup>c</sup>	-0.011	0.928	0.642	<0.001 <sup>c</sup>	0.125	0.510	0.166	0.391	-0.324	<0.01 <sup>b</sup>
Ferritin	0.473	<0.001 <sup>c</sup>	0.419	<0.001 <sup>c</sup>	0.343	<0.01 <sup>b</sup>	-0.061	0.604	0.257	0.026 <sup>a</sup>	0.224	0.226	0.250	0.183	0.022	0.845
SUVmax-overall	0.097	0.580	0.168	0.358	-0.115	0.529	-0.154	0.400	0.072	0.695					0.364	0.034 <sup>a</sup>
SUVmax-biopsy	0.068	0.703	-0.017	0.929	-0.121	0.517	-0.169	0.365	-0.081	0.666	0.364	0.034 <sup>a</sup>	0.492	0.003 <sup>b</sup>	0.492	0.003 <sup>b</sup>
Ki67%	-0.217	0.043 <sup>a</sup>	-0.121	0.316	-0.184	0.124	0.062	0.608	-0.297	0.012 <sup>a</sup>						

<sup>a</sup>P<0.05; <sup>b</sup>P<0.01; <sup>c</sup>P<0.001. CRP, C reactive protein; IL-6, interleukin-6; IL-2R, interleukin-2 receptor; IL-8, interleukin-8; TNF- $\alpha$ , tumor necrosis factor- $\alpha$ ; LDH, lactate dehydrogenase;  $\beta$ 2-mg,  $\beta$ 2-microglobulin; SUVmax, maximal standardized uptake value; Ki67%, ratio of Ki67.