

Figure S1. (A) Representative flow cytometry results (left) and summary of the frequency of MDSCs (right) in the bone marrow (BM) of 12-week-old ICR and NOD mice. (B) Representative flow cytometry results (left) and summary of the frequency of MDSCs (right) in the SP of 12-week-old ICR and NOD mice. Error bars indicate SEM. ** $P < 0.01$. MDSCs, myeloid-derived suppressor cells; SP, spleen.

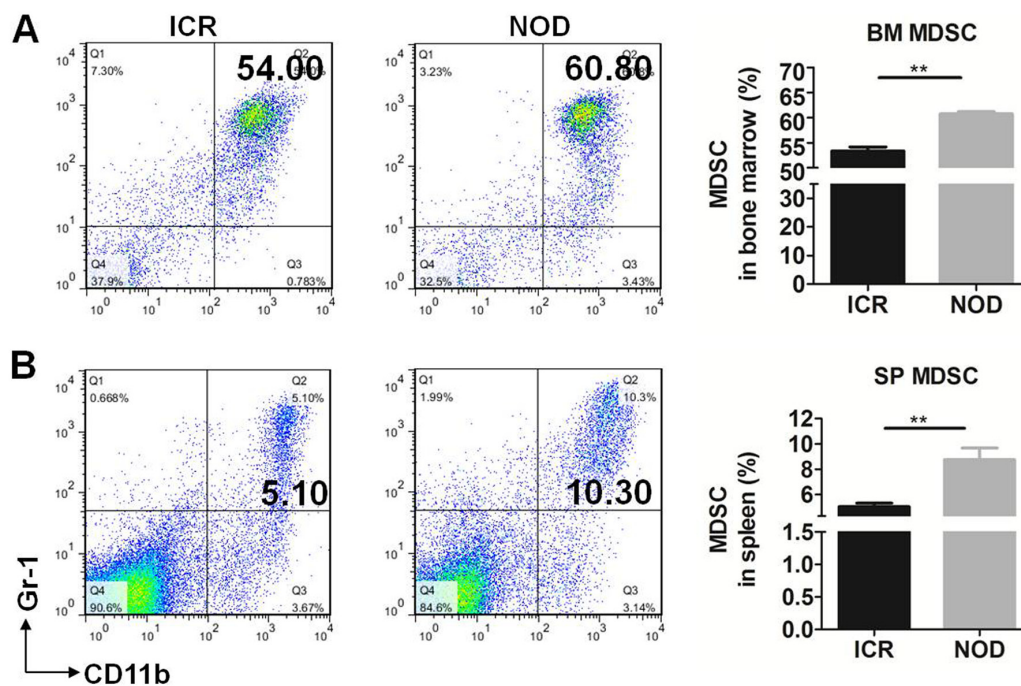


Figure S2. (A) Summary of the number of MDSCs in the spleen from NOD mice. (B) Representative flow cytometry results (left) and summary of the frequency of granulocytic MDSCs (G-MDSCs, CD11b⁺Ly6C⁺Ly6G⁻) and monocytic MDSCs (M-MDSCs, CD11b⁺Ly6C^{low}Ly6G⁺) in BM and SP of IL-12-treated NOD (NOD+IL-12) or control (Ctrl) mice (middle), and the summary of the number of G-MDSCs and M-MDSCs in SP of IL-12-treated NOD mice or control mice (left). (C) Representative flow cytometry results (left) and summary of the frequency of G-MDSCs and M-MDSCs in BM and SP of anti-IL-12-treated NOD (NOD+Anti-IL-12) or control (Ctrl) mice (middle), and the summary of the number of G-MDSCs and M-MDSCs in SP of anti-IL-12-treated NOD or control mice (left). Error bars indicate SEM. *P<0.05. IL-12, interleukin-12; MDSCs, myeloid-derived suppressor cells; G-MDSCs, granulocytic MDSCs; M-MDSCs, monocytic MDSCs; BM, bone marrow; SP, spleen.

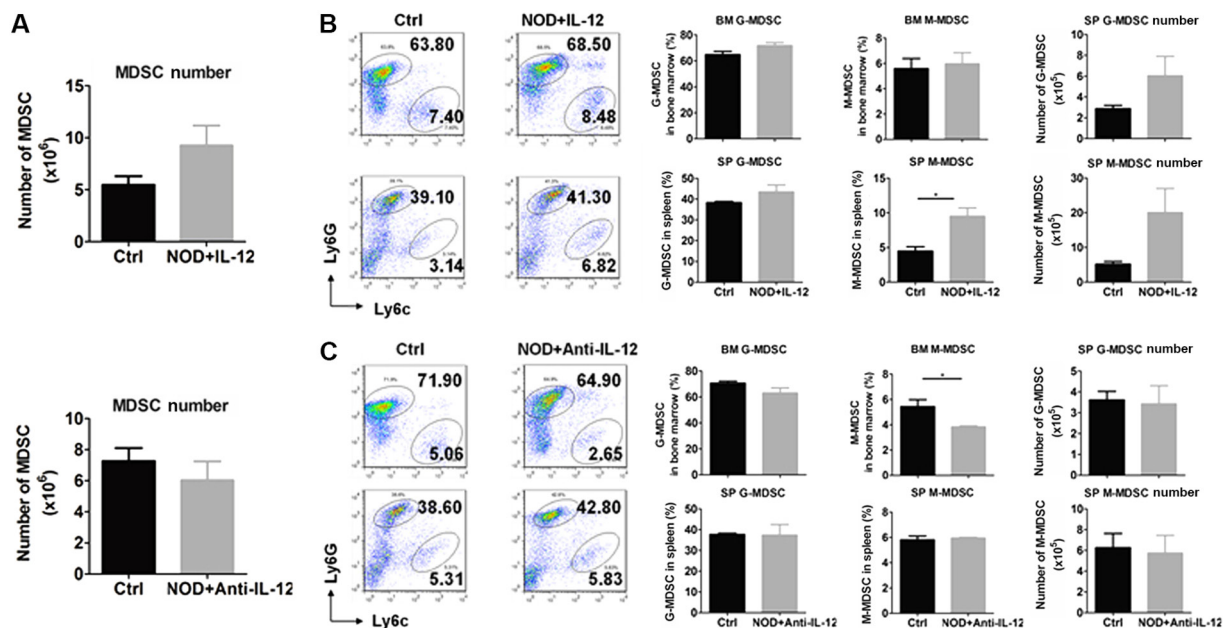


Figure S3. (A) Representative flow cytometry results and (B) summary of the percentages and numbers of G-MDSCs and M-MDSCs in the SP of 4-, 6-, 8- and 10-week-old (4W, 6W, 8W and 10W) *Il-12^{-/-}* B6 mice. Error bars indicate SEM. *P<0.05, **P<0.01 and ***P<0.001. MDSCs, myeloid-derived suppressor cells; G-MDSCs, granulocytic MDSCs; M-MDSCs, monocytic MDSCs; SP, spleen.

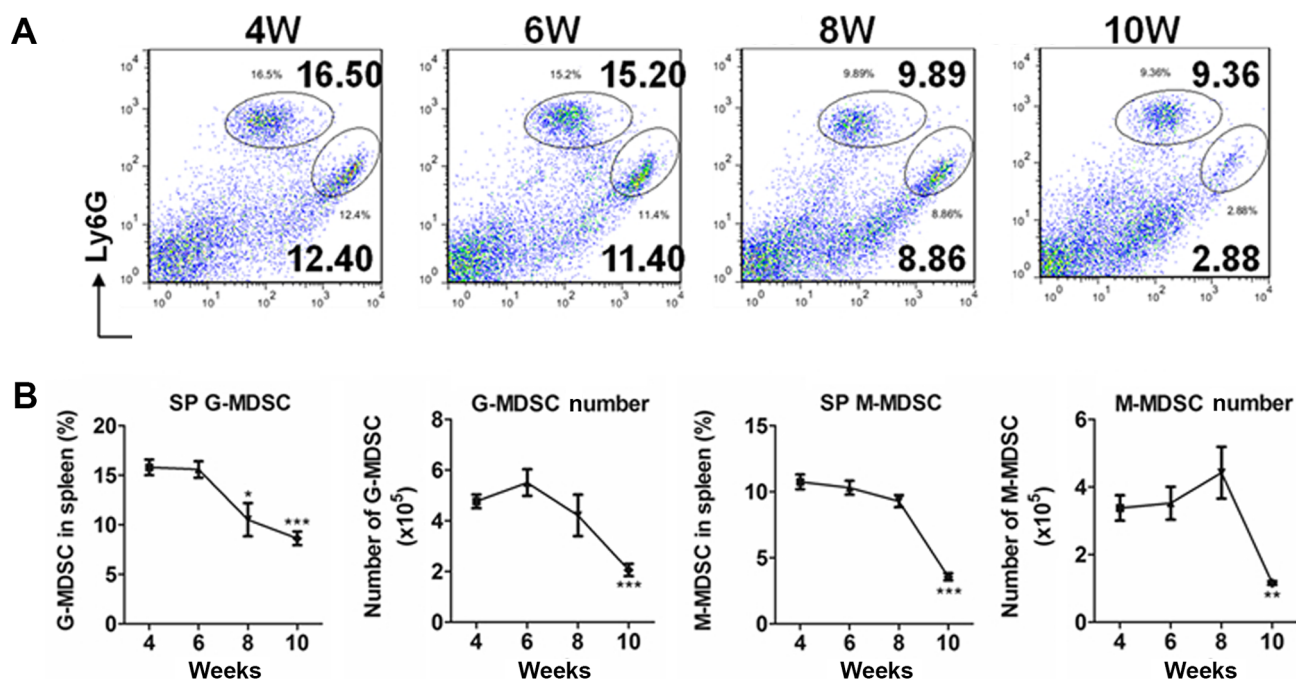


Figure S4. (A) Representative flow cytometry results (left) and summary of the frequency of CD4⁺CD25⁺Foxp3⁺ Treg cells in the spleen (right) in the IL-12-treated NOD (NOD+IL-12) and control (Ctrl) mice (top panel) as well as in the anti-IL-12-treated NOD (NOD+Anti-IL-12) and control (Ctrl) mice (bottom panel). (B) Representative flow cytometry results (left) and summary of the frequency of CD11b⁺F4/80⁺ M in SP (right) in the different mouse groups. Error bars indicate SEM. *P<0.05. IL-12, interleukin-12; M, macrophages.

