

Figure S1. Expression of Cl-1 in the cervix of 2-, 4- and 7-month-old FvB mice. The dashed white line represents the border between the epithelial basal cell layer and the stroma. S, stroma; *Cervical lumen; Cl, claudin.

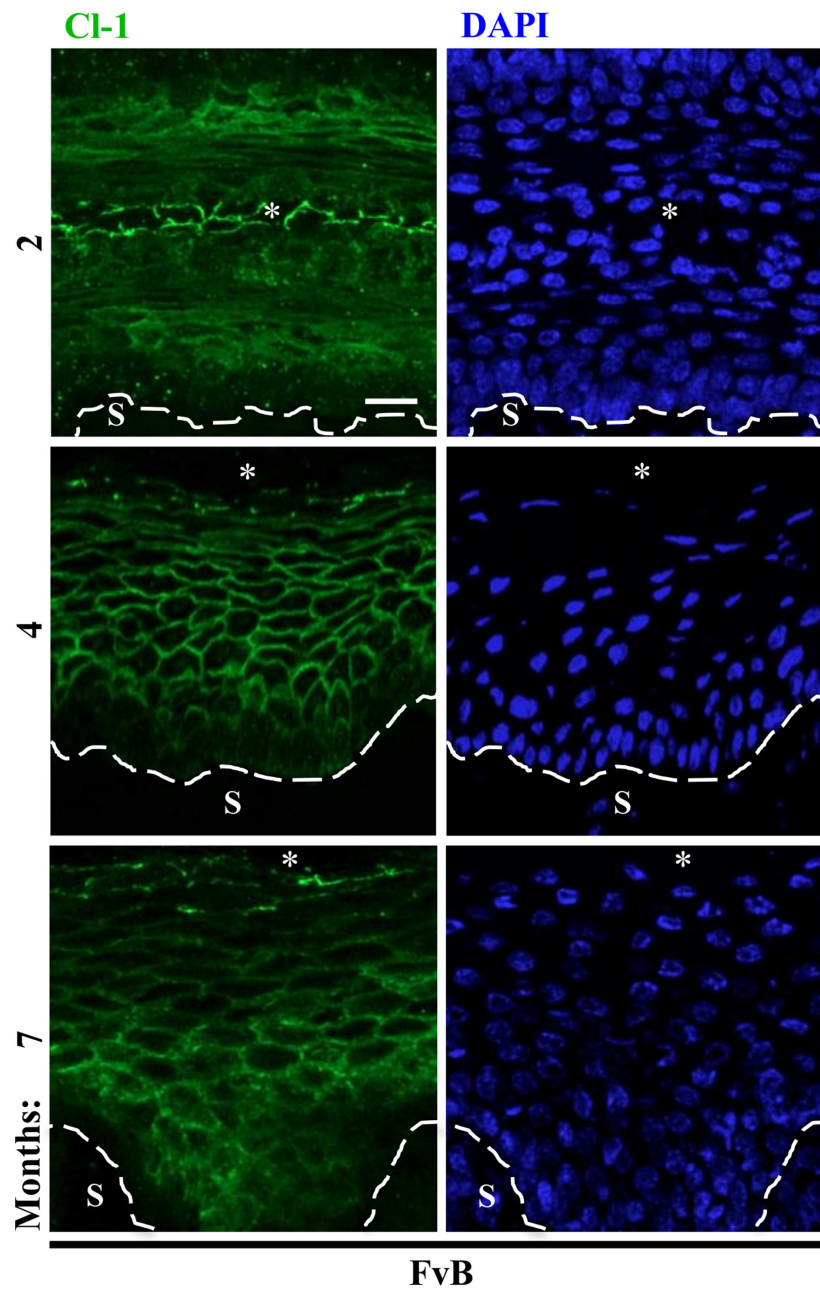


Figure S2. Expression of Cl-1 in the cervix of 2-, 4- and 7-month-old FvB mice treated with +E2. The dashed white line represents the border between the epithelial basal cell layer and the stroma. S, stroma; *Cervical lumen; Cl, claudin; E2, 17 β -estradiol.

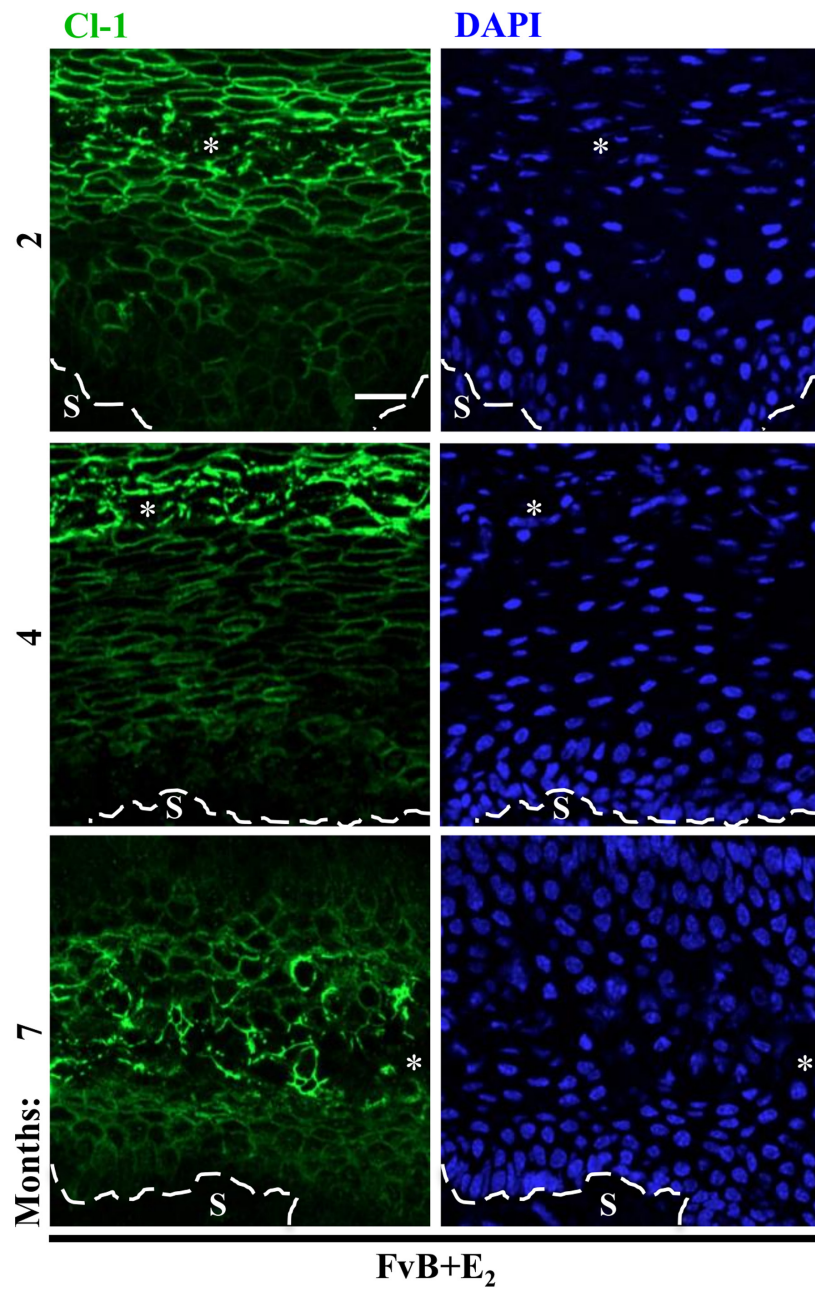


Figure S3. Expression of Cl-1 in the cervix of 2-, 4- and 7-month-old K14E7 mice. The dashed white line represents the border between the epithelial basal cell layer and the stroma. S, stroma; *Cervical lumen; Cl, claudin.

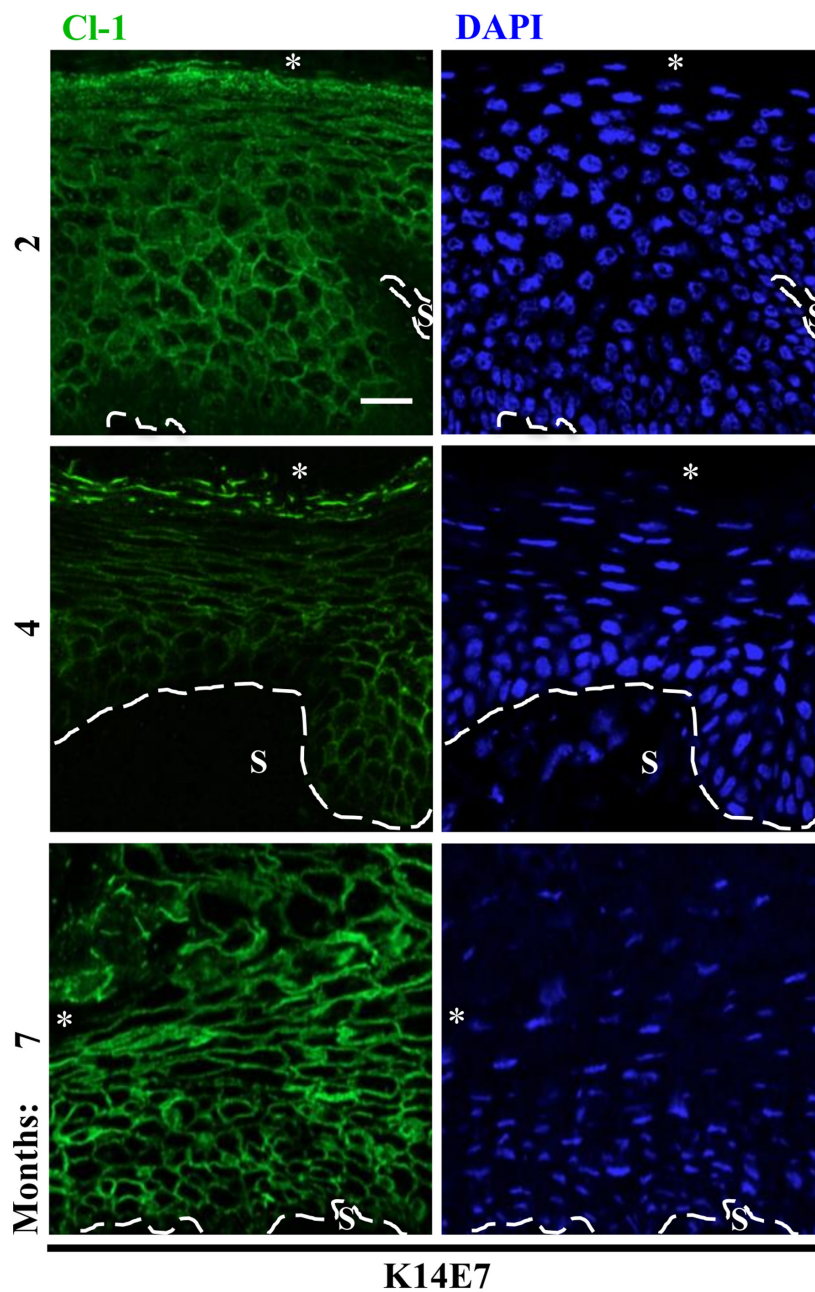


Figure S5. Expression of Cl-10 in the cervix of 2-, 4- and 7-month-old FvB mice. The dashed white line represents the border between the epithelial basal cell layer and the stroma. S, stroma; *Cervical lumen; Cl, claudin.

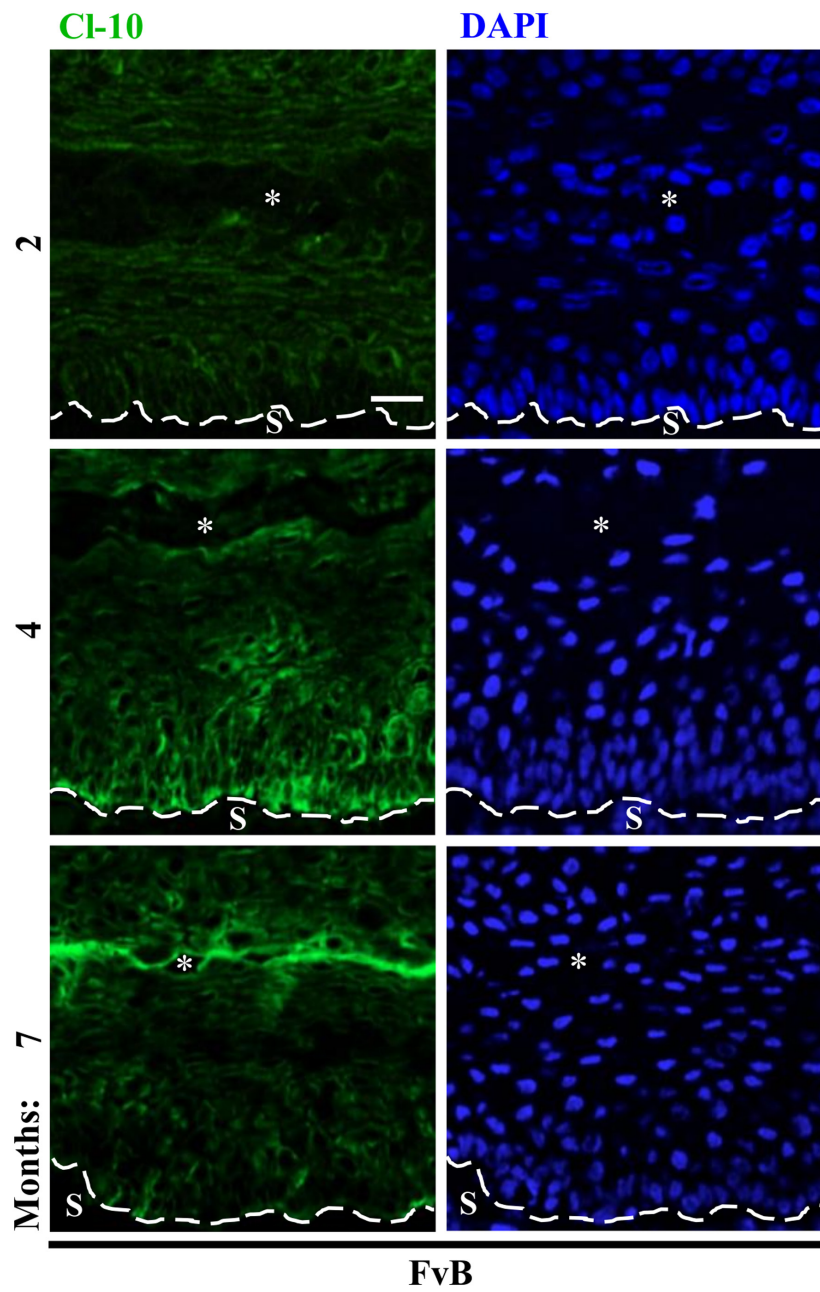


Figure S6. Expression of Cl-10 in the cervix of 2-, 4- and 7-month-old FvB mice treated with E2. The dashed white line represents the border between the epithelial basal cell layer and the stroma. S, stroma; *Cervical lumen; Cl, claudin; E2, 17 β -estradiol.

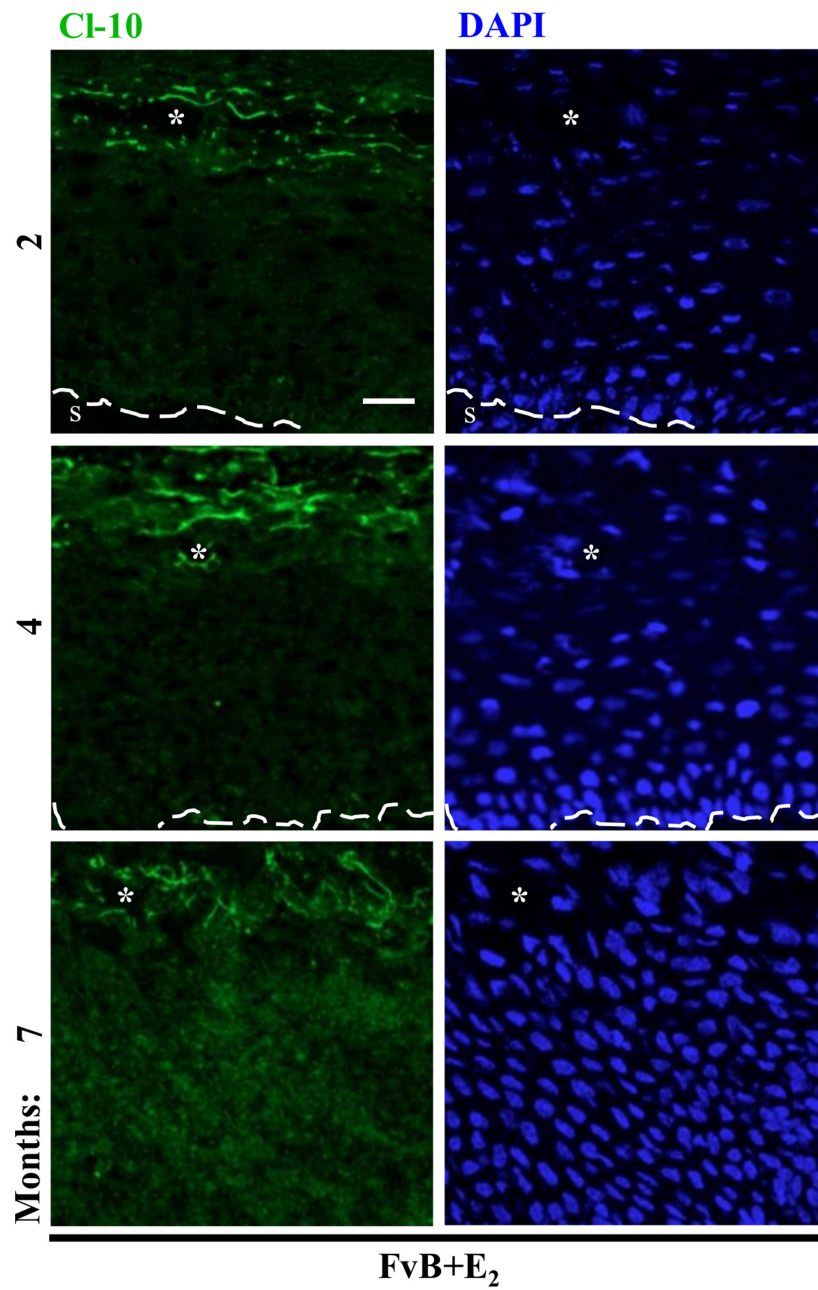


Figure S7. Expression of Cl-10 in the cervix of 2-, 4- and 7-month-old K14E7 mice. The dashed white line represents the border between the epithelial basal cell layer and the stroma. S, stroma; *Cervical lumen; Cl, claudin.

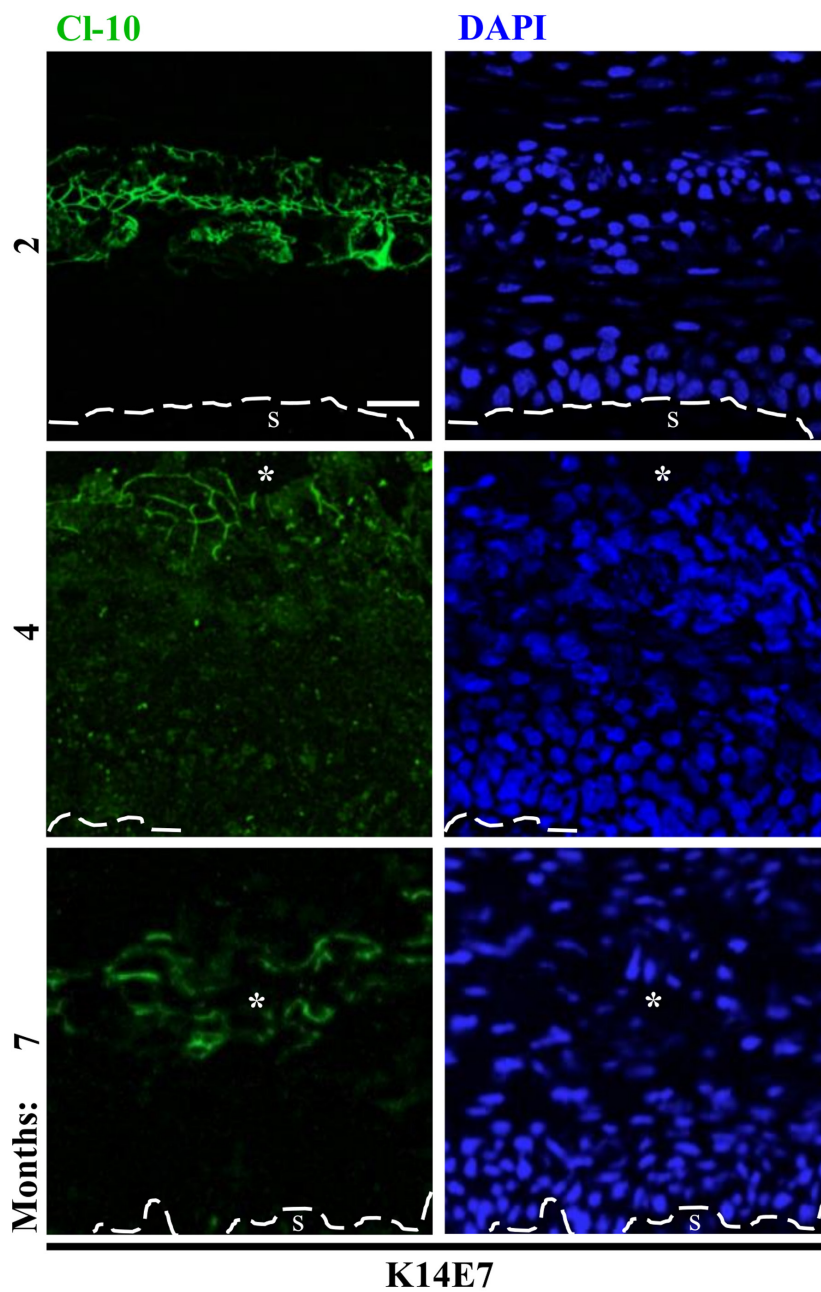


Figure S8. Expression of Cl-10 in the cervix of 2-, 4- and 7-month-old K14E7 mice treated with E₂. The dashed white line represents the border between the epithelial basal cell layer and the stroma. S, stroma; *Cervical lumen; Cl, claudin; E₂, 17β-estradiol.

