

Figure S1. Effect of individual NCs or mixed NCs on the expression levels of Rheb. (A) Protein and (B) mRNA expression levels of Rheb in HSFbFs following the transfection of individual NCs or mixed NCs were analyzed using western blotting and reverse transcription-quantitative PCR, respectively. NC, negative control.

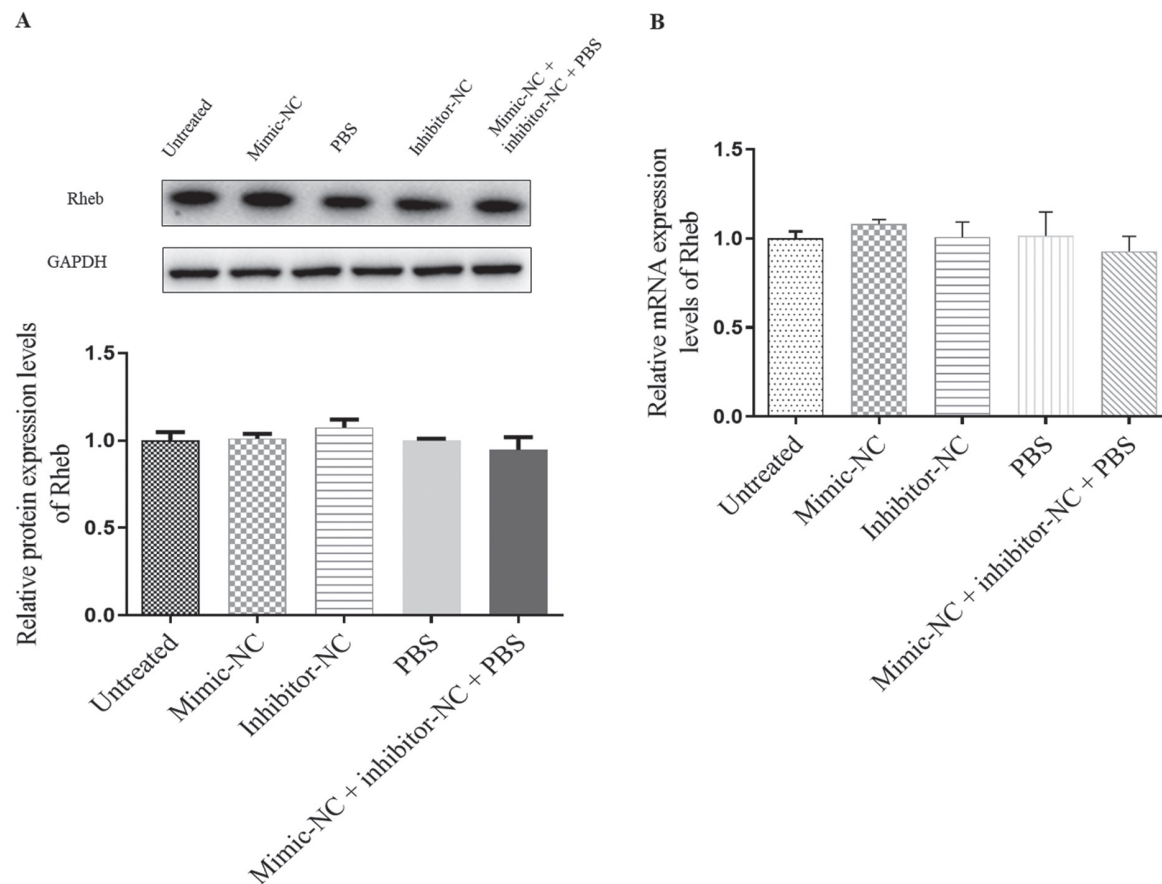


Figure S2. Effect of individual NCs or mixed NCs on cell viability and autophagy. (A) Cell viability of HSFs following different transfections for 48 h was detected using an MTT assay. (B) Western blotting was used to analyze the protein expression levels of LC3, Beclin 1 and Rheb following different transfections. (C) Semi-quantification of the protein expression levels from part (B). NC, negative control; LC3, microtubule-associated protein 1A/1B-light chain 3.

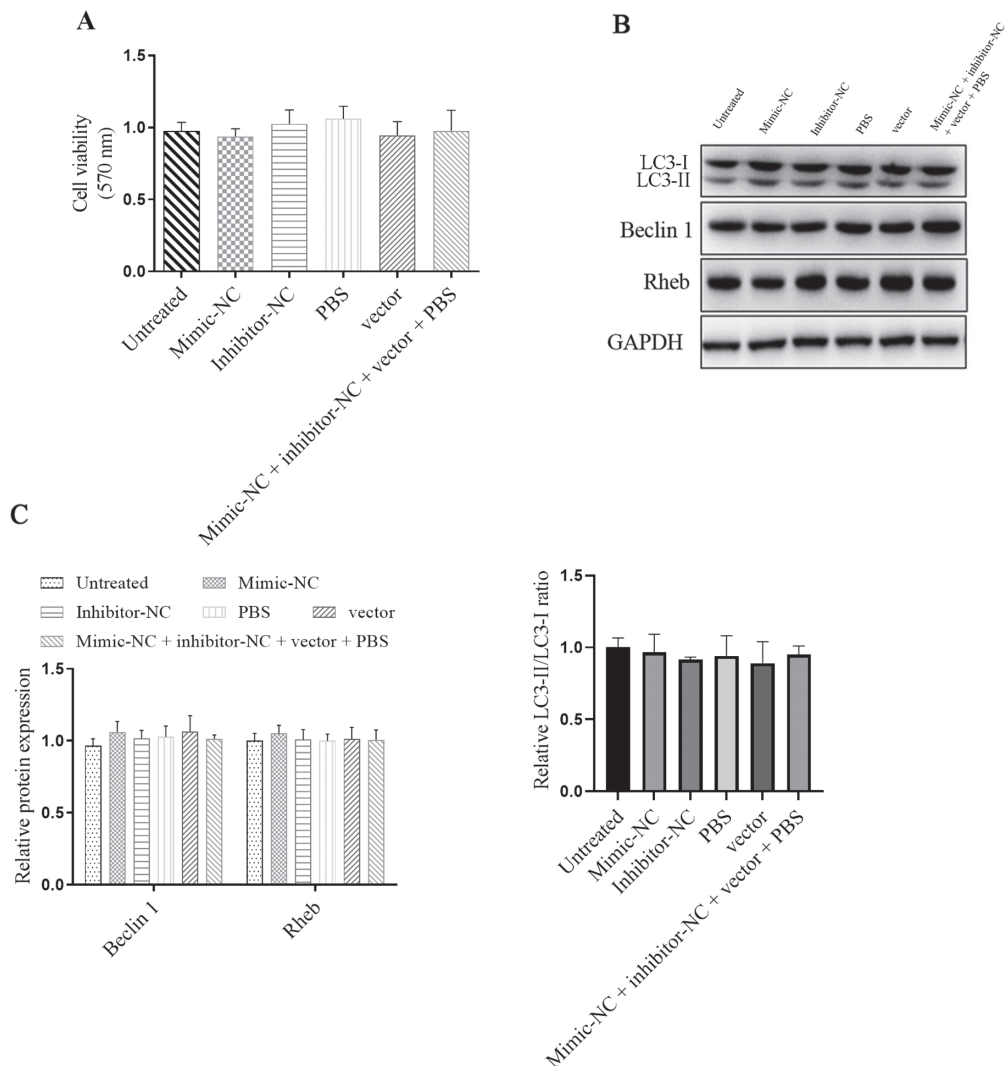


Figure S3. Representative fluorescence images of GFP-LC3 transfection in cells with different transfections. The cells were observed at a magnification of x200 using confocal microscopy. Scale bar = 20 μ m. NC, negative control; LC3, microtubule-associated protein 1A/1B-light chain 3.

