

Figure S1. miR-4500 inhibitor reverses the effects of NEAT1 knockdown on cell proliferation, apoptosis, migration and invasion. Representative images of the (A) colony formation, (B) flow cytometry, and Transwell (C) migration and (D) invasion assays (magnification, x100). miR, microRNA; si, small interfering RNA; NEAT1, nuclear paraspeckle assembly transcript 1; NC, negative control; PI, propidium iodide.

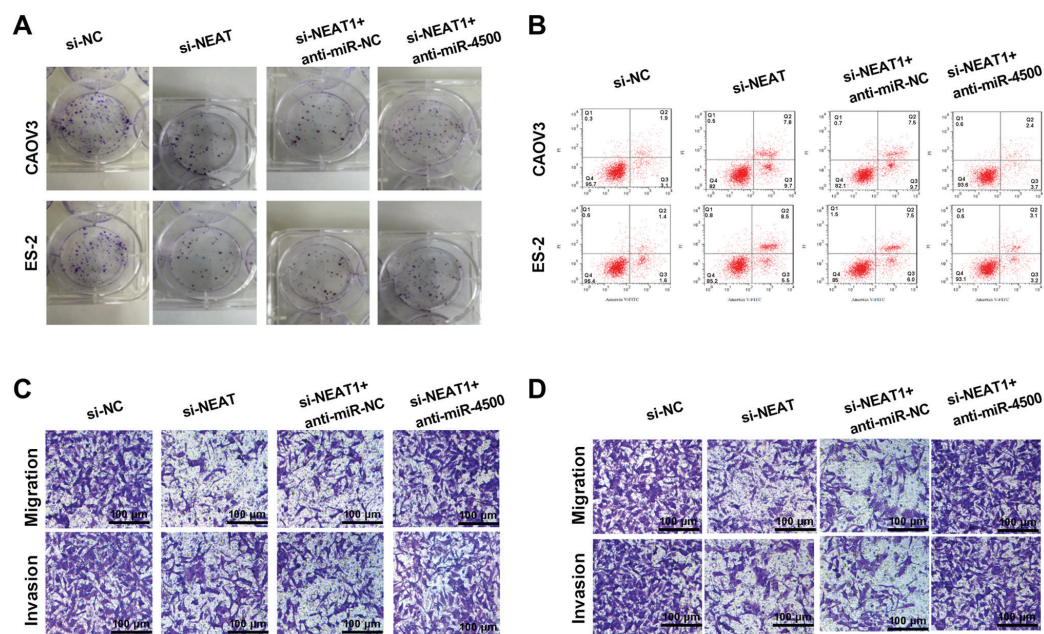


Figure S2. BZW1 overexpression reverses the effects of miR-4500 overexpression on cell proliferation, apoptosis, migration and invasion. Representative images of the (A) colony formation, (B) flow cytometry, and Transwell (C) migration and (D) invasion assays (magnification, x100). BZW1, basic leucine zipper and W2 domain-containing protein 1; miR, microRNA; NC, negative control; PI, propidium iodide.

