

Figure S1. Representative intensity of SREBP2 was detected in four matched tumors and adjacent normal tissues using western blotting. SREBP1, sterol regulatory element-binding protein 1; mSREBP1, mature sterol regulatory element-binding protein 1; N, normal tissue; T, tumor.

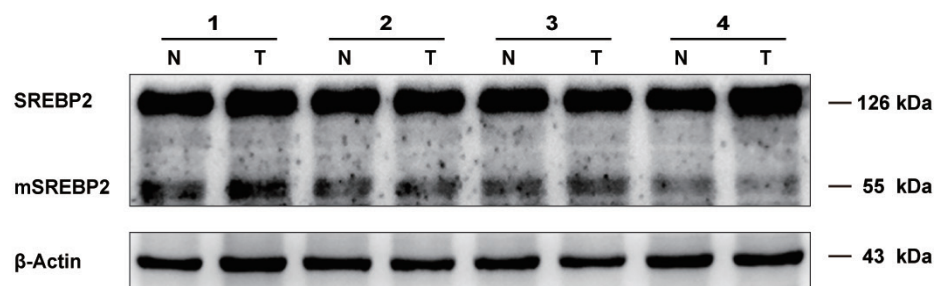


Figure S2. Effects of different shRNA-SREBP1 in ECA-109 cells were detected using western blotting. According to these results, sh1 was selected for the follow-up experiments. mSREBP1, mature sterol regulatory element-binding protein 1; sh, short hairpin; SREBP1, sterol regulatory element-binding protein 1.

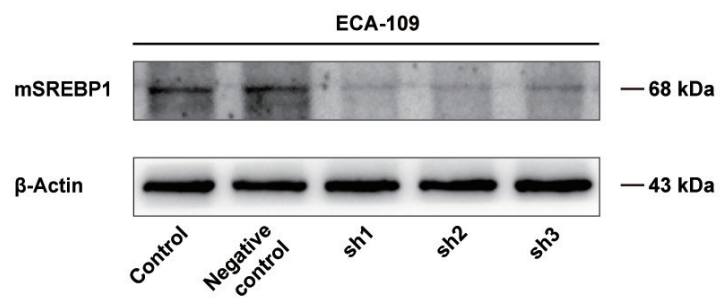


Figure S3. Representative morphological images of ECA-109 and KYSE-150 cells before and after silencing or overexpressing SREBP1 for 48 h. Magnification, x200. SREBP1, sterol regulatory element-binding protein 1; sh, short hairpin.

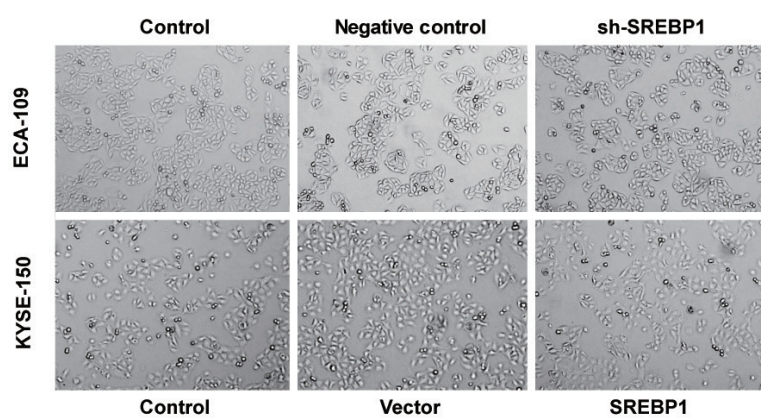
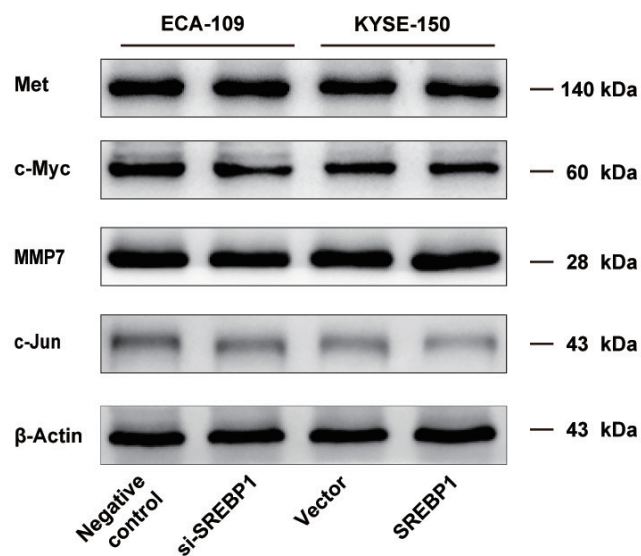


Figure S4. Effects of SREBP1-depletion and SREBP1-overexpression on the protein expression levels of c-Myc, c-Jun, MMP7 and Met were determined using western blotting in ECA-109 and KYSE-150 cells. SREBP1, sterol regulatory element-binding protein 1; si, small interfering; MMP, matrix metalloproteinase.



KYSE-150

	Cytoplasm				Nucleus				
Mevastatin(μM)	-	-	+	+	-	-	+	+	
mSREBP1									— 68 kDa
SCD1									— 42 kDa
β-Catenin									— 92 kDa
β-Actin									
	Vector	SREBP1	Vector	SREBP1	Vector	SREBP1	Vector	SREBP1	Lamin B1