

Figure S1. Identification of (A and B) CD4⁺ T cells, (C and D) CD8⁺ T cells and (E-G) regulatory T cells by flow cytometry. (A) Unstained cells were displayed on the FSC-SSC scatter plot and the target cell population was circled by gate. (B) Cells within the gate in panel A located in the rectangle gate were considered as CD4⁺ T cells. (C) Unstained cells were displayed on the FSC-SSC scatter plot and the target cell population was circled by gate. (D) Cells within the gate in panel C located in the rectangle gate were considered as CD8⁺ T cells. (E) Unstained cells were displayed on the FSC-SSC scatter plot and the target cell population was circled by gate. (F) Cells within the gate in panel E located in the rectangle gate were considered as CD4⁺ T cells. (G) Cells within the gate in panel F located in the rectangle gate were considered as CD4⁺CD25⁺CD127^{dim} T cells. PE, phycoerythrin; SSC, sideward scatter; FSC, forward scatter; PerCP, peridinin-Chlorophyll-Protein complex; FITC, fluorescein isothiocyanate.

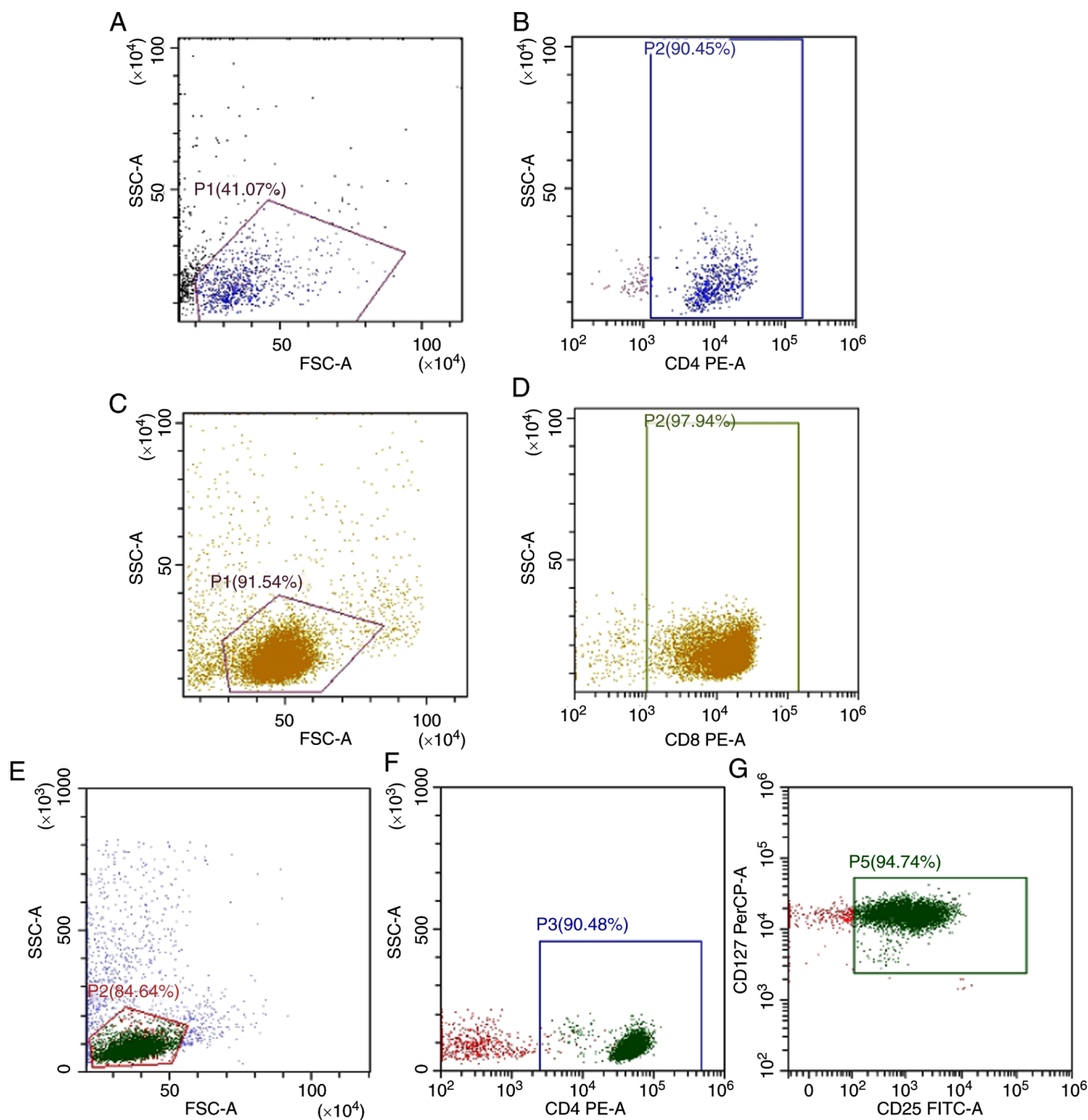


Figure S2. CD4⁺ T cell apoptosis assay detected by flow cytometry. (A) Unstained CD4⁺ T cells cultured without exosomes were displayed on the FSC-SSC scatter plot and the target cell population was circled by gate. (B) Cells within the gate in A were located in the center of the LL quadrant in the two-parameter of PE-FITC and this region was negative. (C) PI and Annexin V-stained cells were displayed on the FSC-SSC scatter plot and the target cell population was circled by gate. (D) Cells within the gate in panel C that were located in the UR and LR quadrants in the two-parameter of PE-FITC were considered as apoptotic cells. (E) Unstained CD4⁺ T cells co-cultured with OPM2-isolated exosomes were displayed on the FSC-SSC scatter plot and the target cell population was circled by gate. (F) Cells within the gate in E were located in the center of the LL quadrant in the two-parameter of PE-FITC and this region was negative. (G) PI and Annexin V-stained cells were displayed on the FSC-SSC scatter plot and the target cell population was circled by gate. (H) Cells within the gate in panel G that were located in the UR and LR quadrants in the two-parameter of PE-FITC were considered as apoptotic cells. (I) Unstained CD4⁺ T cells co-cultured with U266B1-isolated exosomes were displayed on the FSC-SSC scatter plot and the target cell population was circled by gate. (J) Cells within the gate in I were located in the center of the LL quadrant in the two-parameter of PE-FITC and this region was negative. (K) PI and Annexin V-stained cells were displayed on the FSC-SSC scatter plot and the target cell population was circled by gate. (L) Cells within the gate in panel K that were located in the UR and LR quadrants in the two-parameter of PE-FITC were considered as apoptotic cells. UL, upper left; UR, upper right; LL, lower left; LR, lower right; exo, exosome; FITC, fluorescein isothiocyanate; PE, phycoerythrin; SSC, sideward scatter; FSC, forward scatter; PI, propidium iodide.

