

Figure S1. *In vitro* migration of BxPC-3 cells cultured with Panc-1-derived EXOs (magnification, x200). EXO, exosome.

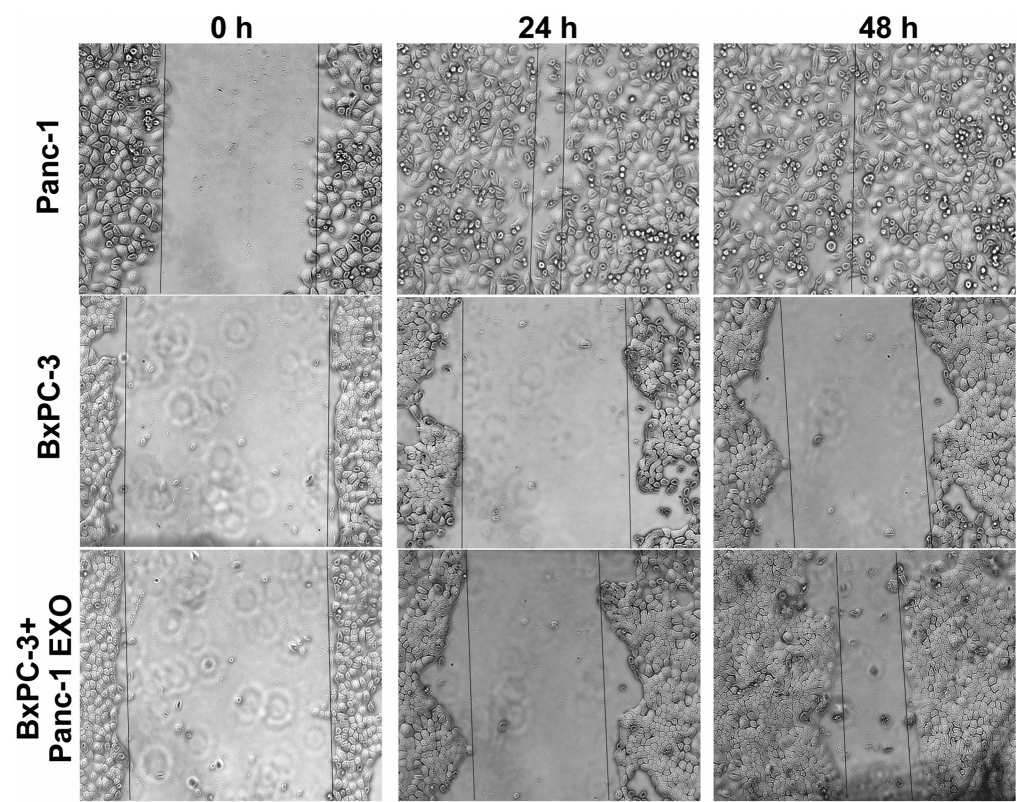


Figure S2. *In vitro* migration of BxPC-3 cells cultured with autologous EXOs. EXO, exosome.

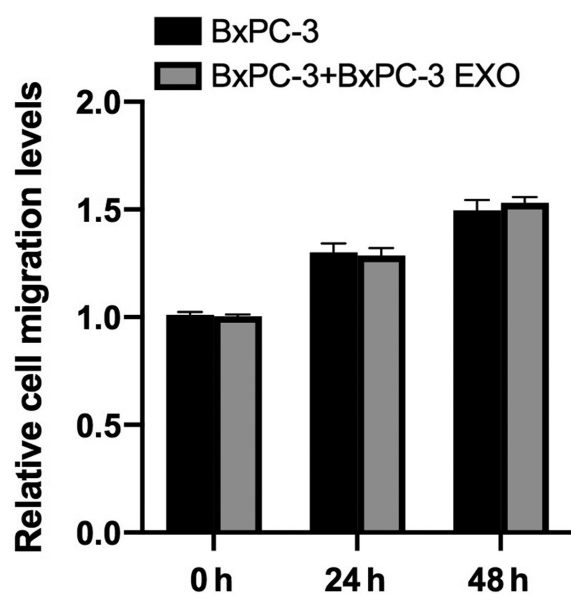


Figure S3. Migration of Panc-1 and Panc1EphA2-cells (magnification, x200). EphA2, receptor tyrosine kinase Eph receptor A2.\*P<0.05 as indicated.

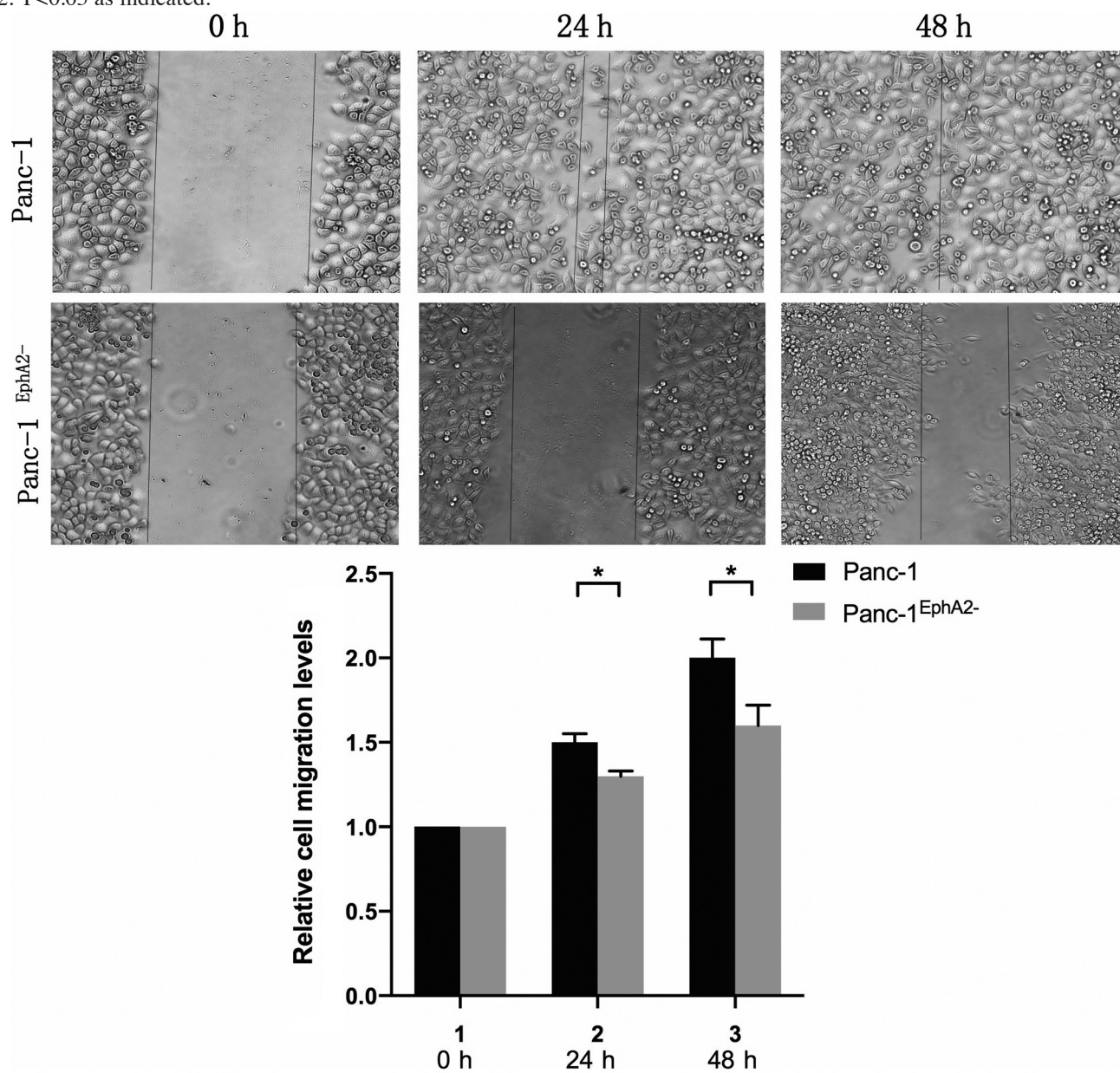




Figure S4. *In vitro* migration of BxPC-3 cells cultured with Panc1EphA2-derived EXOs and recombinant EphA2 (magnification, x200). EXO, exosome; EphA2, receptor tyrosine kinase Eph receptor A2.

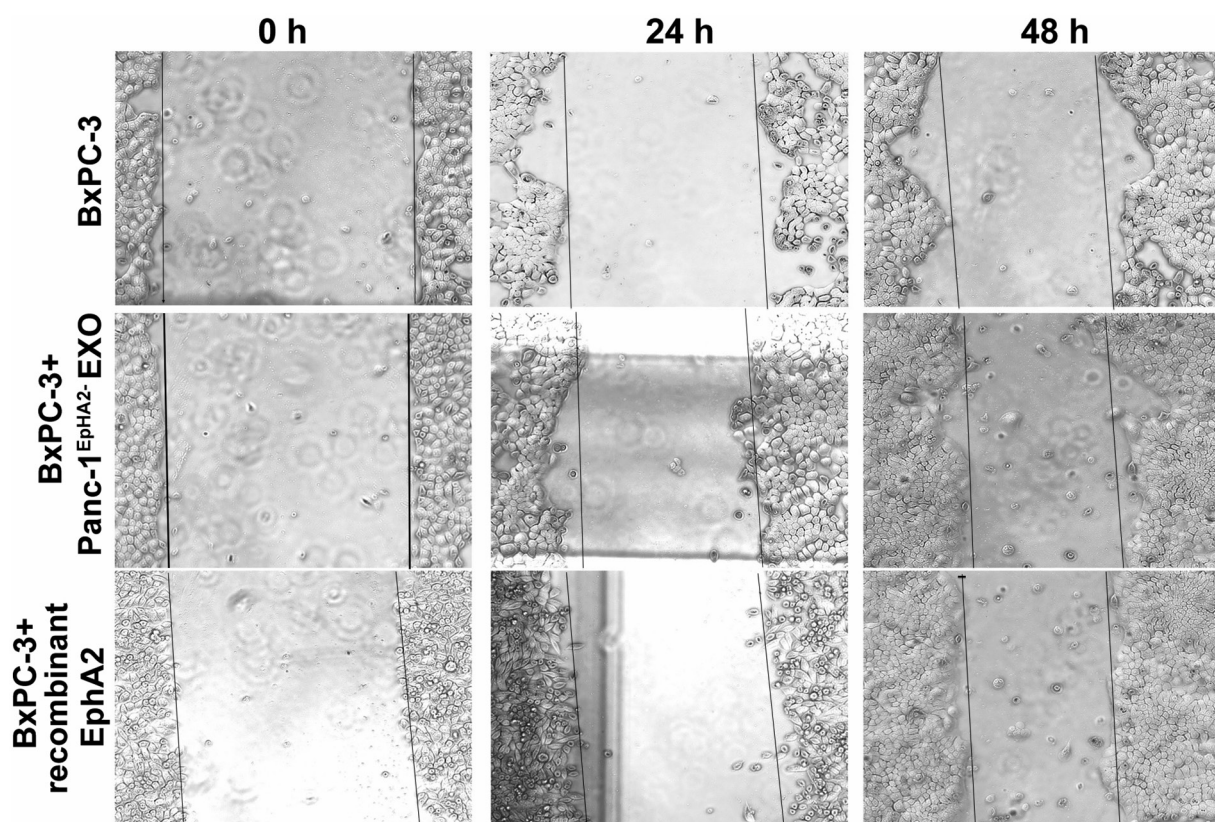


Table SI. Proteins identified by liquid chromatography-tandem mass spectrometry from the exosomal bands.

Protein name	Score	Mass, Da	Number of peptides	Identification in exosome
Ephrin type-A receptor 2	124	108,197	6	Y
MARCKS-related protein	90	19,517	4	N
Lactadherin	70	43,095	4	Y
Cytochrome b-c1 complex subunit 2	43	48,413	1	Y
Inter- $\alpha$ -trypsin inhibitor heavy chain H2	43	106,397	1	Y
Ribonuclease inhibitor	40	49,941	1	Y
Retinoic acid-induced protein 3	40	40,225	1	Y

Y, proteins identified in exosomes that have been reported; N, proteins that have not been reported in exosomes.